

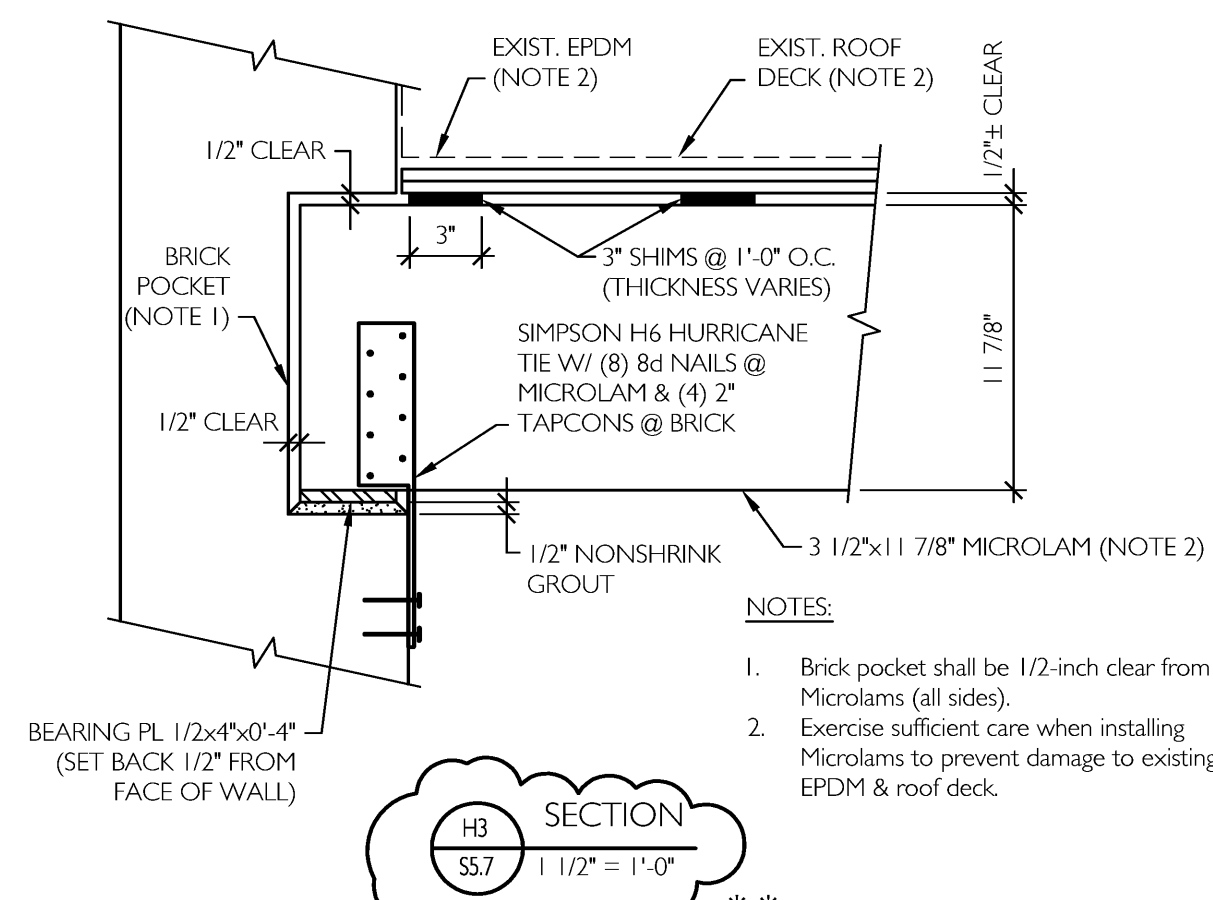
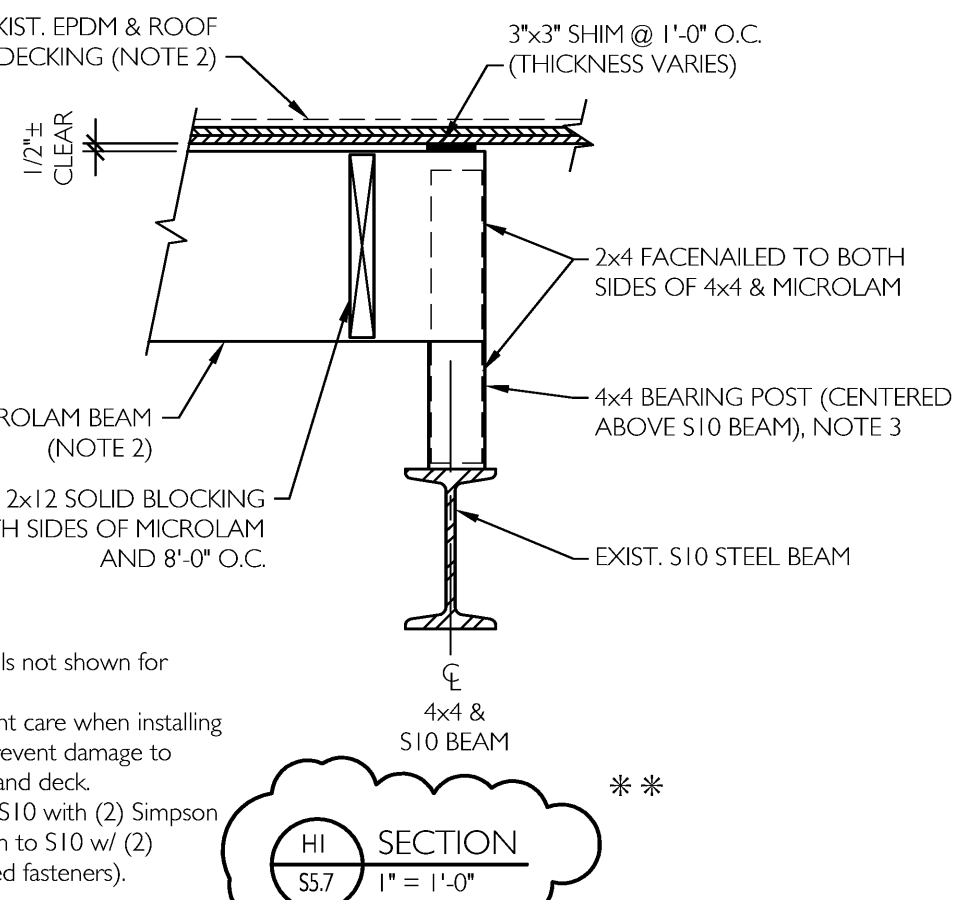
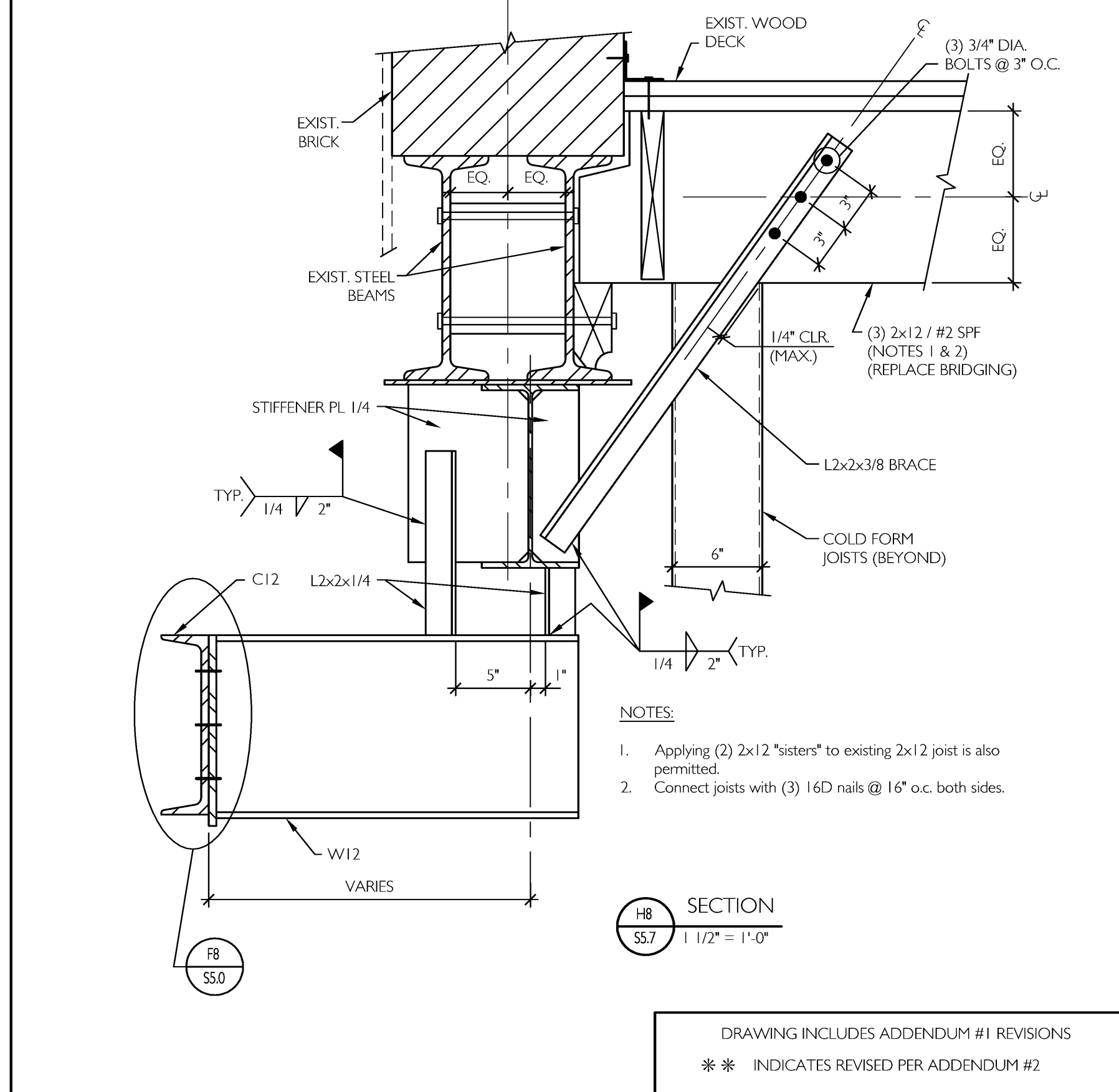
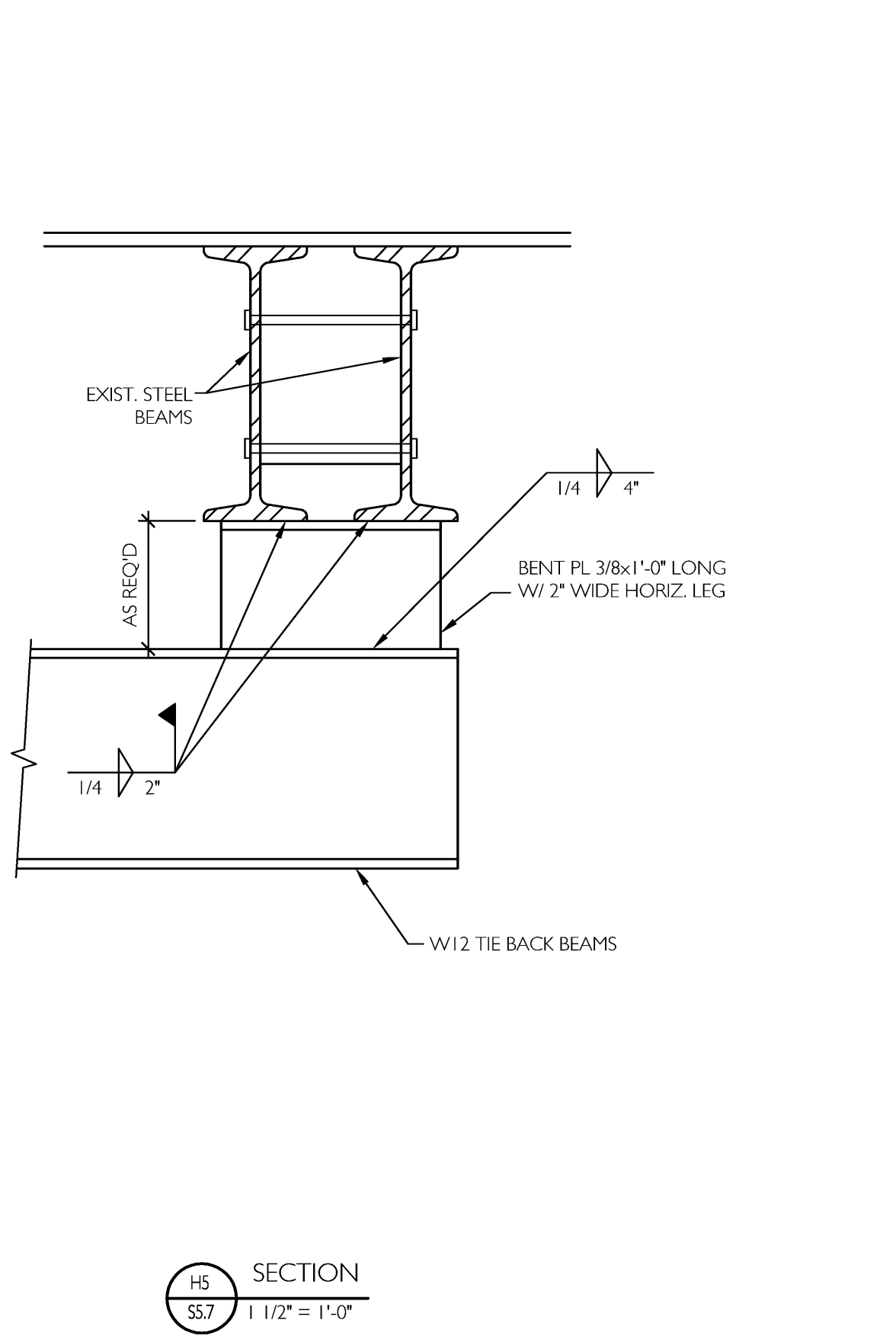
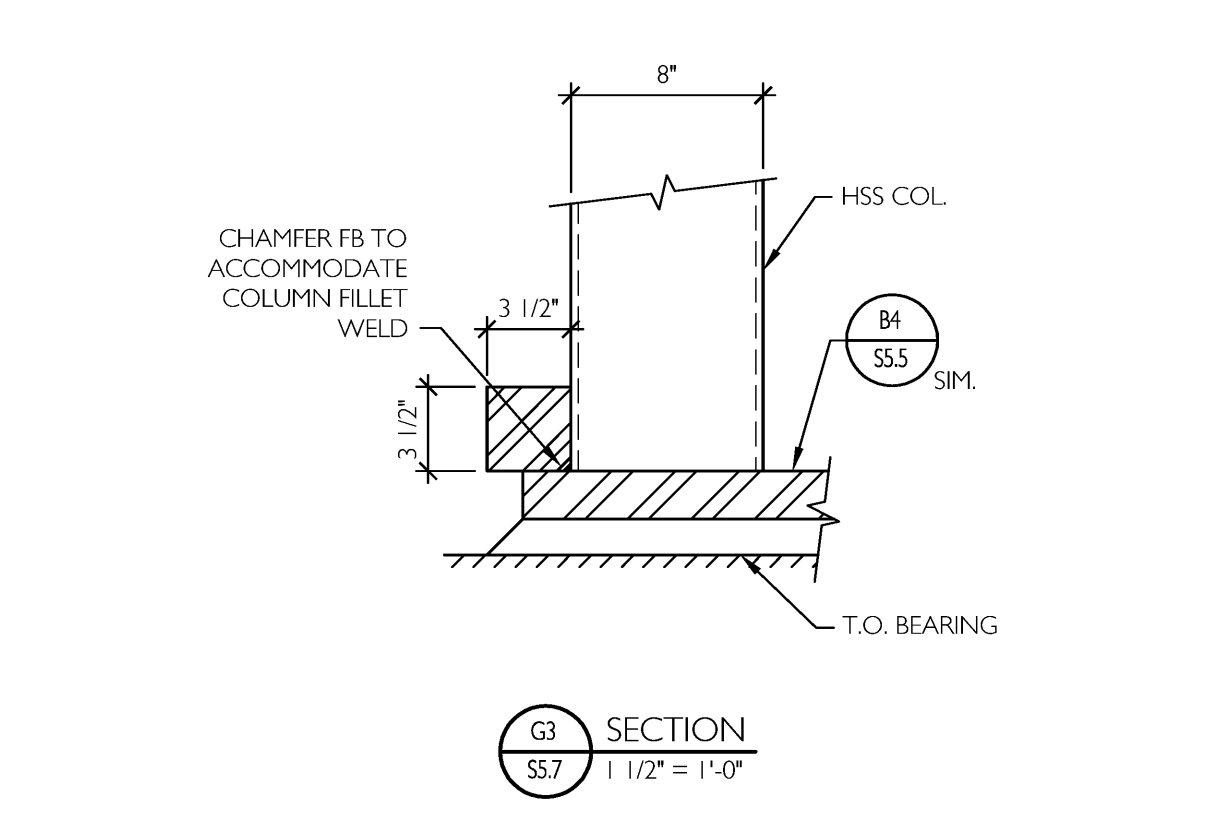
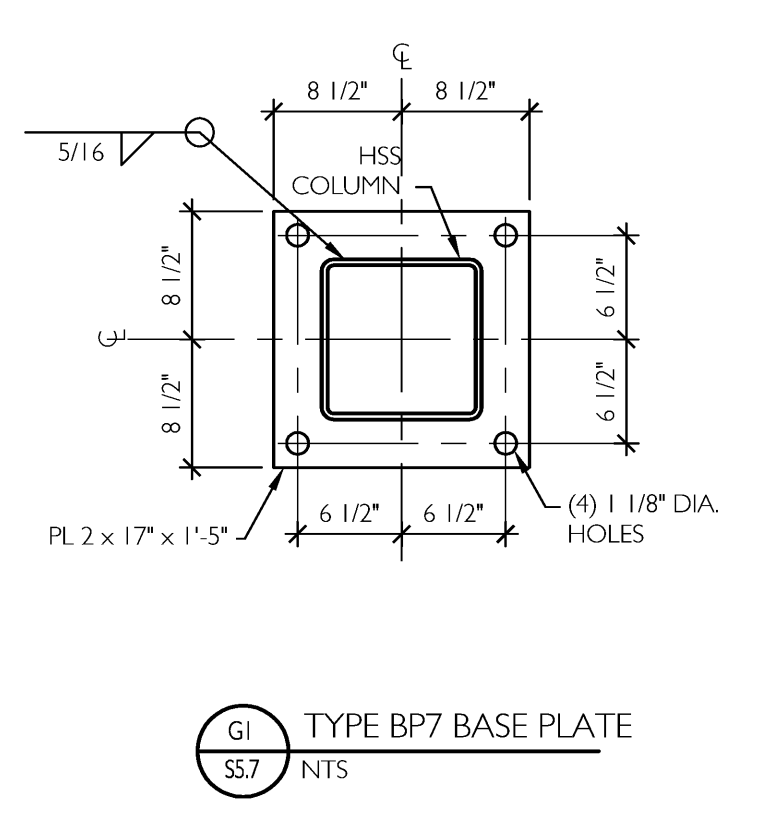
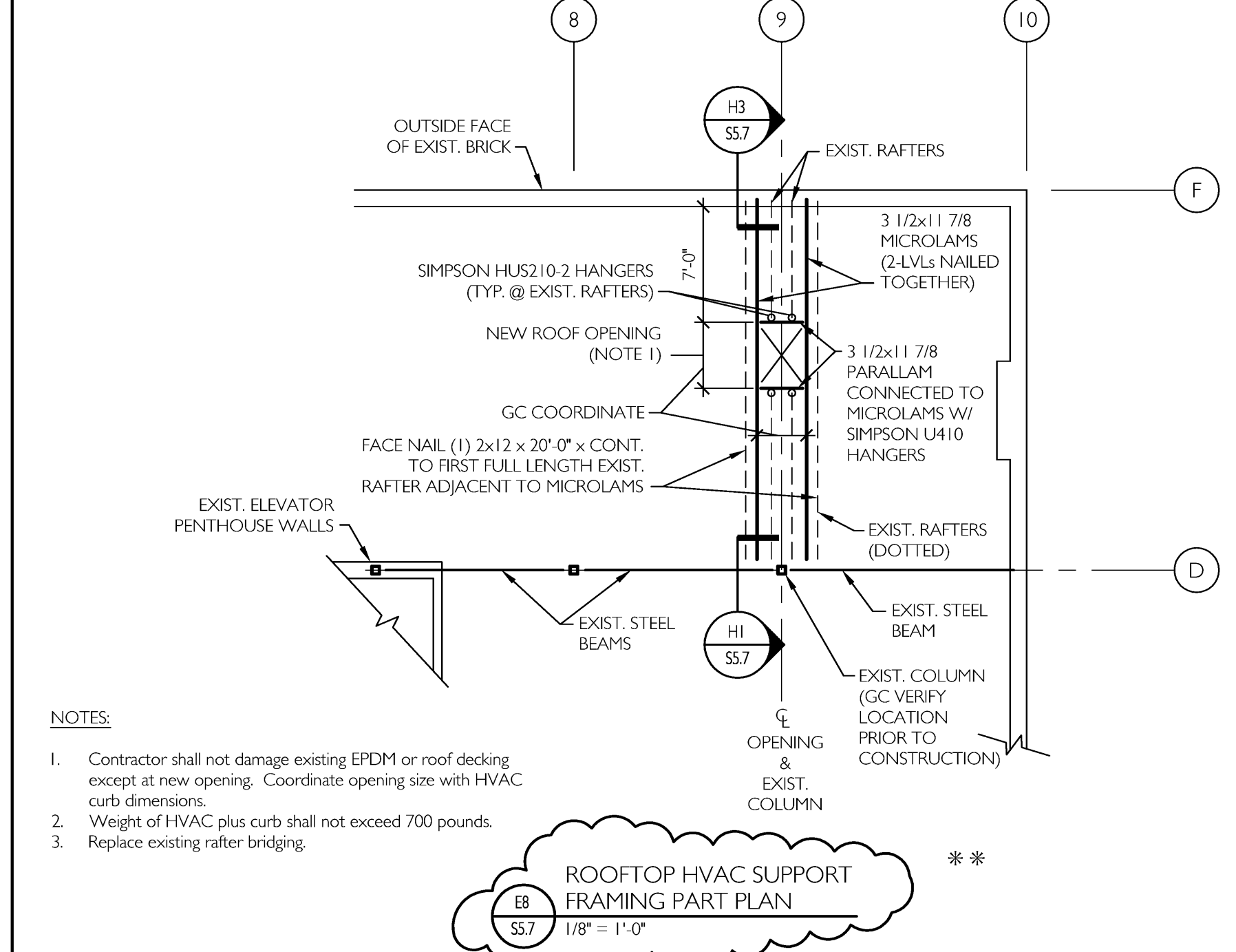
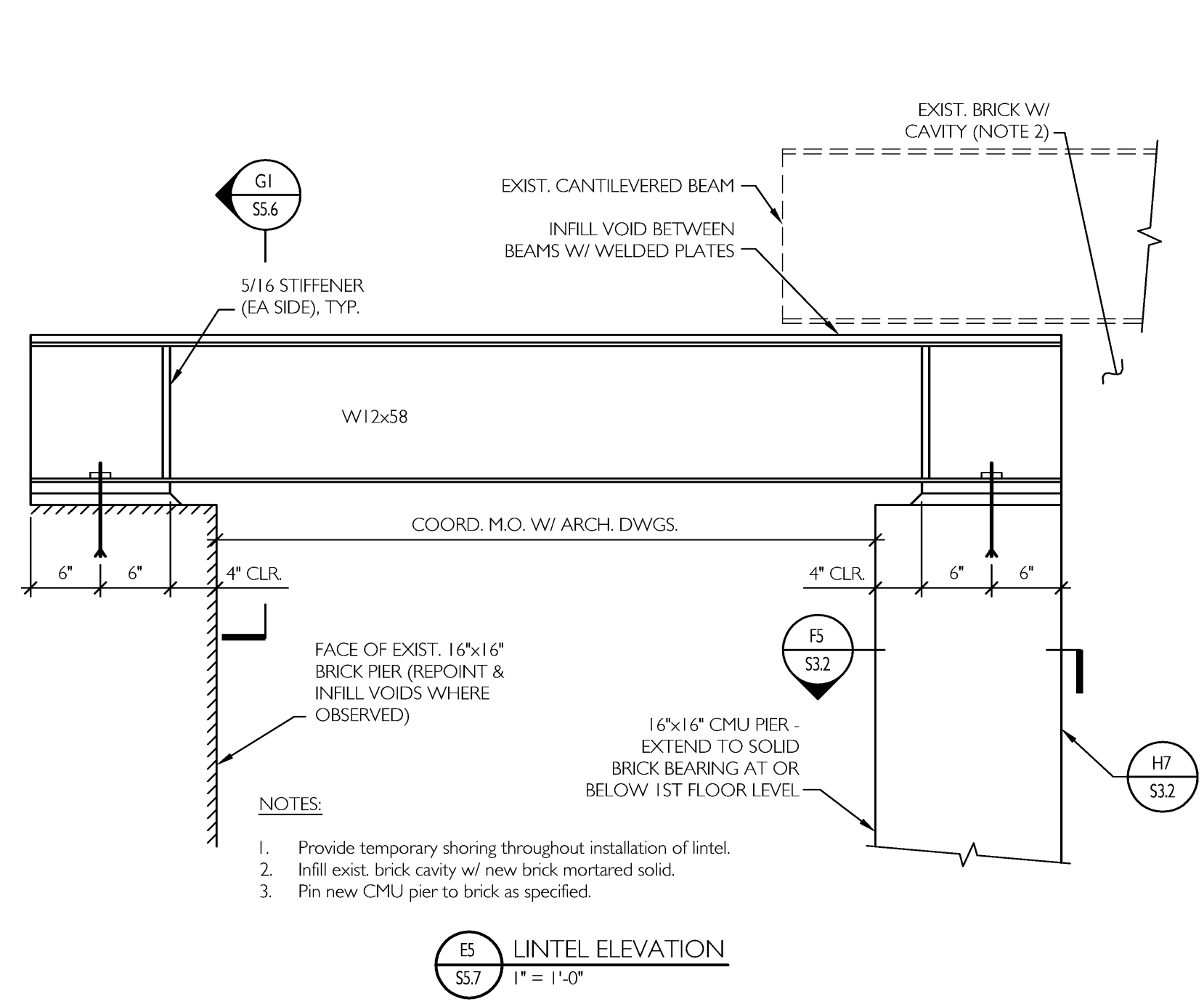
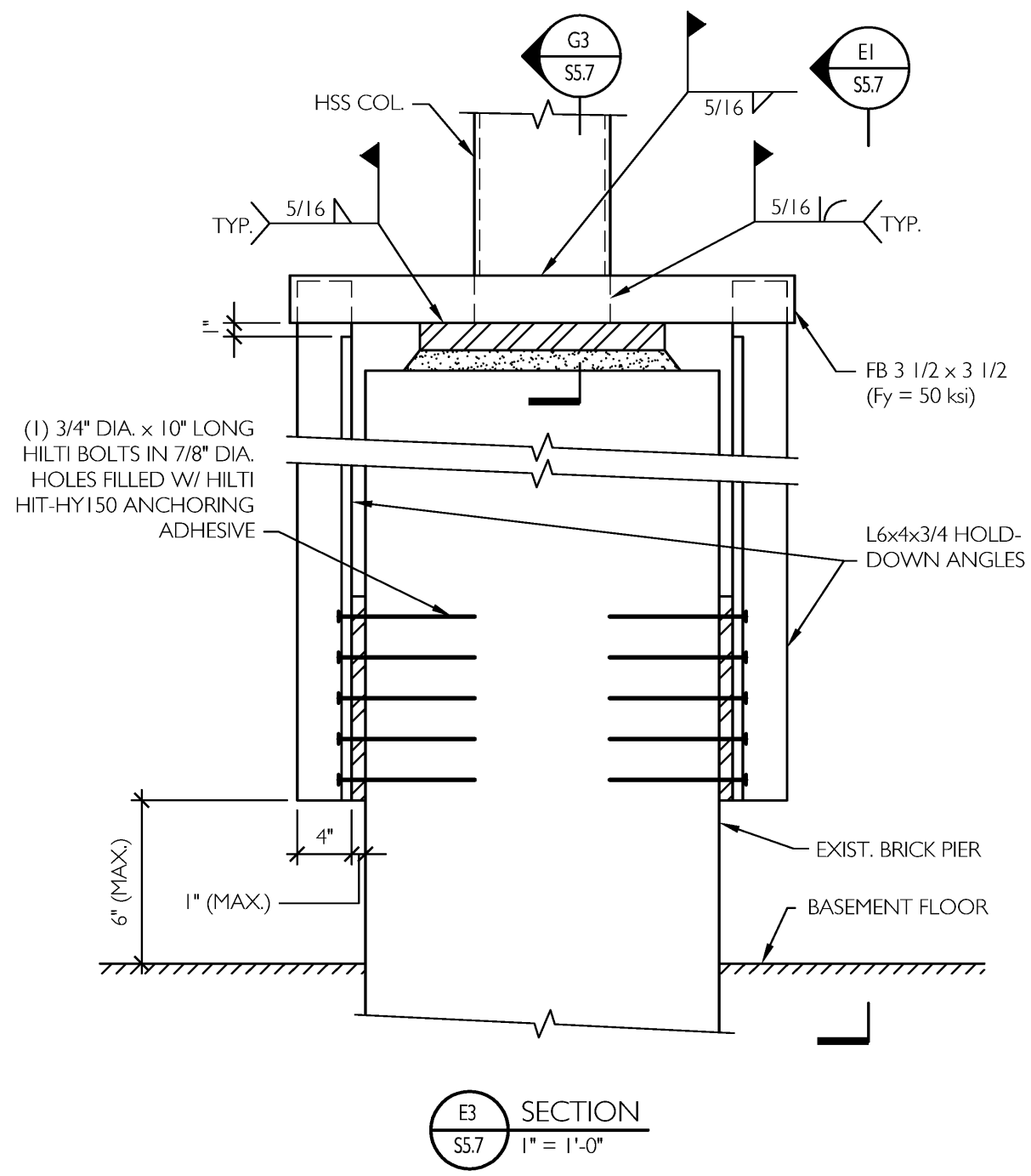
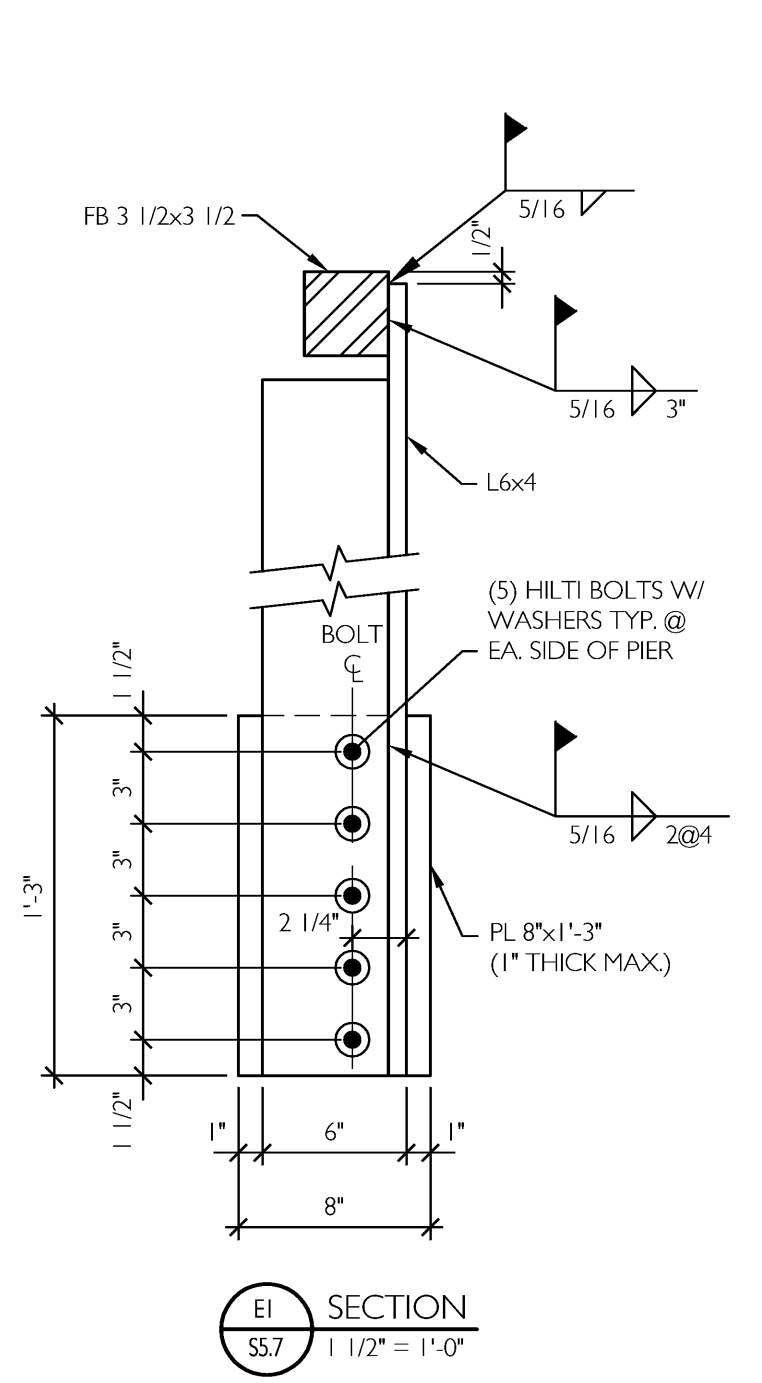
COLUMN GRID	A / 2.5	A / 2.9	A / 3.2	A / 3.7	A / 4.1	A / 4.9	A / 5.1	A / 6.7	A / 7.1	A / 8.1	A / 8.9	E.3 / 11 E.3 / 15	E.3 / 12 E.3 / 13 E.3 / 14	F.1 / 11 F.1 / 12 F.1 / 13 F.1 / 14 F.1 / 15	G.1 / 4.2	G.1 / 4.8	G.1 / 5.2	G.1 / 5.6	G.1 / 6.5	G.1 / 7.3	F / 5.8
COLUMN SIZE	HSS 10x10x5/8	HSS 10x8x3/8	HSS 8x8x5/16	HSS 8x8x5/16	HSS 10x8x1/2	HSS 10x8x1/2	W12x45	W12x45	HSS 10x8x3/8	HSS 10x8x1/2	HSS 10x8x3/8	HSS 8x8x5/16	HSS 8x8x3/8	HSS 4x4x1/4	HSS 4x4x1/4	HSS 4x4x1/4	HSS 5x5x1/4	HSS 5x5x1/4	HSS 4x4x1/4	HSS 4x4x1/4	HSS 8x8x3/8
BASE PLATE TYPE	BP5 - SIM.	BP5	BP7	BP7	BP5	BP5 - SIM.	BP6	BP6	BP1 - SIM.	BP7	BP1	END PLATE	END PLATE	BP8	BP2	BP3	BP2	BP4	BP2	BP3	BP9
BASE PLATE DETAIL	G3 / S5.6	G3 / S5.6	G1 / S5.7	G1 / S5.7	G3 / S5.6	G3 / S5.6	H10 / S5.6	H10 / S5.6	B4 / S5.5	G1 / S5.7	B4 / S5.5	E7 / S5.2	E7 / S5.2	H1 / S5.2	G5 / S5.6	H5 / S5.6	G5 / S5.6	G7 / S5.6	G5 / S5.6	H5 / S5.6	H2 / S5.4
ANCHOR BOLT QTY - DIA.	4 - 3/4" DIA.	4 - 3/4" DIA.	4 - 3/4" DIA.	4 - 3/4" DIA.	4 - 3/4" DIA.	4 - 3/4" DIA.	4 - 3/4" DIA.	4 - 3/4" DIA.	2 - 1" DIA.	4 - 3/4" DIA.	4 - 1" DIA.	3 - 1" DIA.	3 - 1" DIA.	4 - 3/4" DIA.	4 - 3/4" DIA.	2 - 3/4" DIA.	4 - 3/4" DIA.	4 - 3/4" DIA.	4 - 3/4" DIA.	2 - 3/4" DIA.	4 - 3/4" DIA.
ANCHOR BOLT DETAIL	D5 / S3.2	D5 / S3.2	D5 / S3.2	D5 / S3.2	D5 / S3.2	D5 / S3.2	D5 / S3.2	D5 / S3.2	H5 / S3.2	D5 / S3.2	H5 / S3.2	E1 / S3.1	E1 / S3.1	C4 / S3.1	D3 / S3.0	D3 / S3.0	F3 / S3.0	F3 / S3.0	D3 / S3.0	D3 / S3.0	D5 / S3.2

NOTES:

- Contractor shall provide additional temporary bracing as necessary during erection of columns with fewer than four anchor bolts.
- Do not fabricate base plates type BP5, BP5-SIM., or BP7 until Contractor has verified width of existing foundation wall between grids A / 2 and A / 5.

REVISED 7/21/09

**B1**  
**S5.7** COLUMN SCHEDULE



DRAWING INCLUDES ADDENDUM #1 REVISIONS  
\*\* INDICATES REVISED PER ADDENDUM #2

**CWS Architects**  
Architecture  
Space Planning  
Value Design  
434 Cumberland Avenue  
Portland, ME 04101  
Phone: (207)774-4441  
Fax: (207)774-4016  
www.CWSarch.com

**Price Structural Engineers, Inc.**  
CWS/IFC DRAWINGS/S5.7.DWG  
ISSUED FOR CONSTRUCTION JULY 21, 2009  
Owner: **BAYSIDE MAINE LLC**  
477 CONGRESS ST.  
SUITE 1012  
PORTLAND, MAINE, 04101  
Development Consultant: **SHINBERG CONSULTING, LLC**

**RENOVATIONS TO 645 CONGRESS ST.**  
PORTLAND, ME 04101

Drawing Title: **STEEL FRAMING DETAILS**  
Scale: As Noted  
Date: 5/14/09  
Revisions:

**S5.7**

Professional Engineer Seal: STATE OF MAINE, License No. 6401