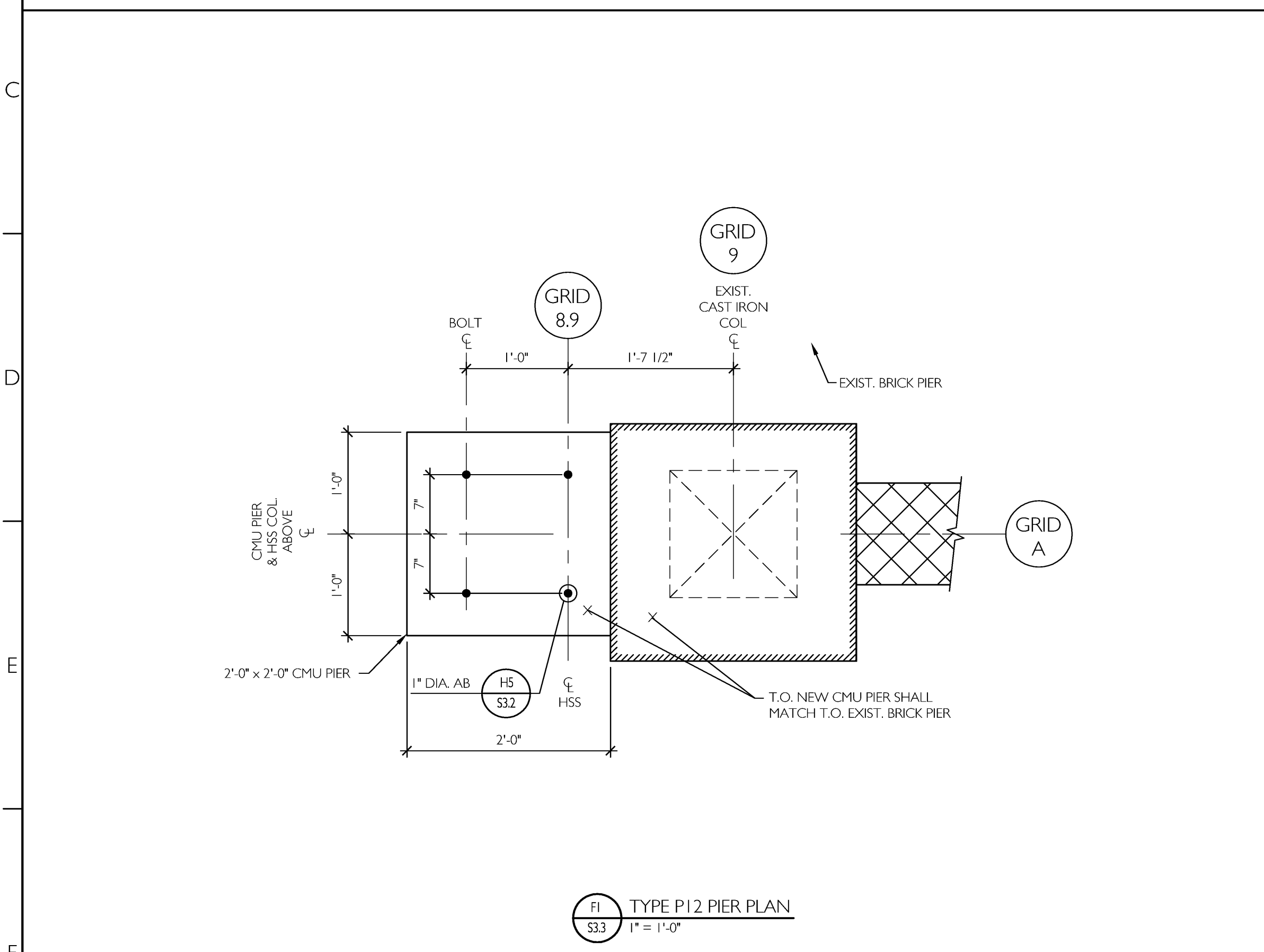
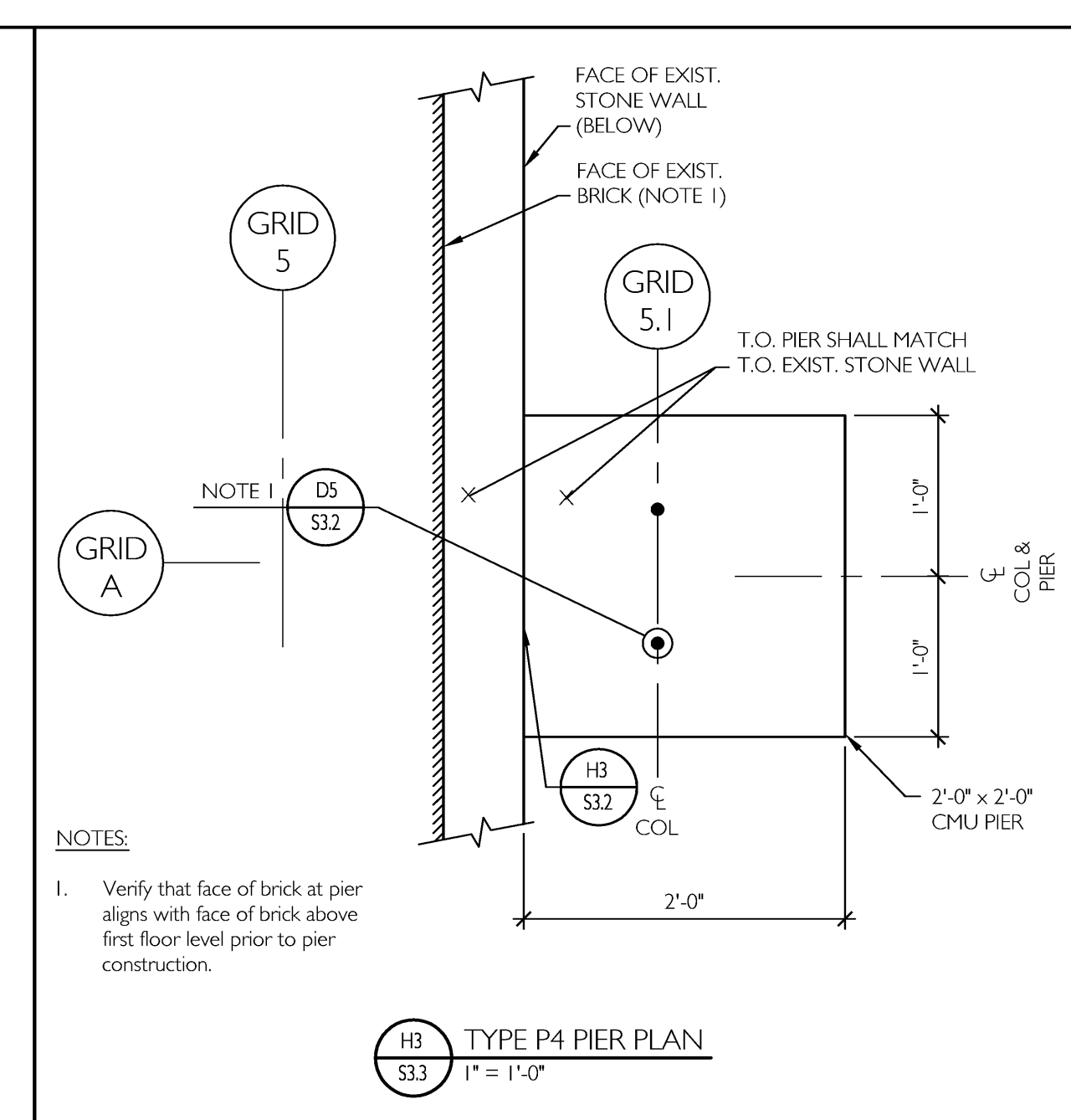


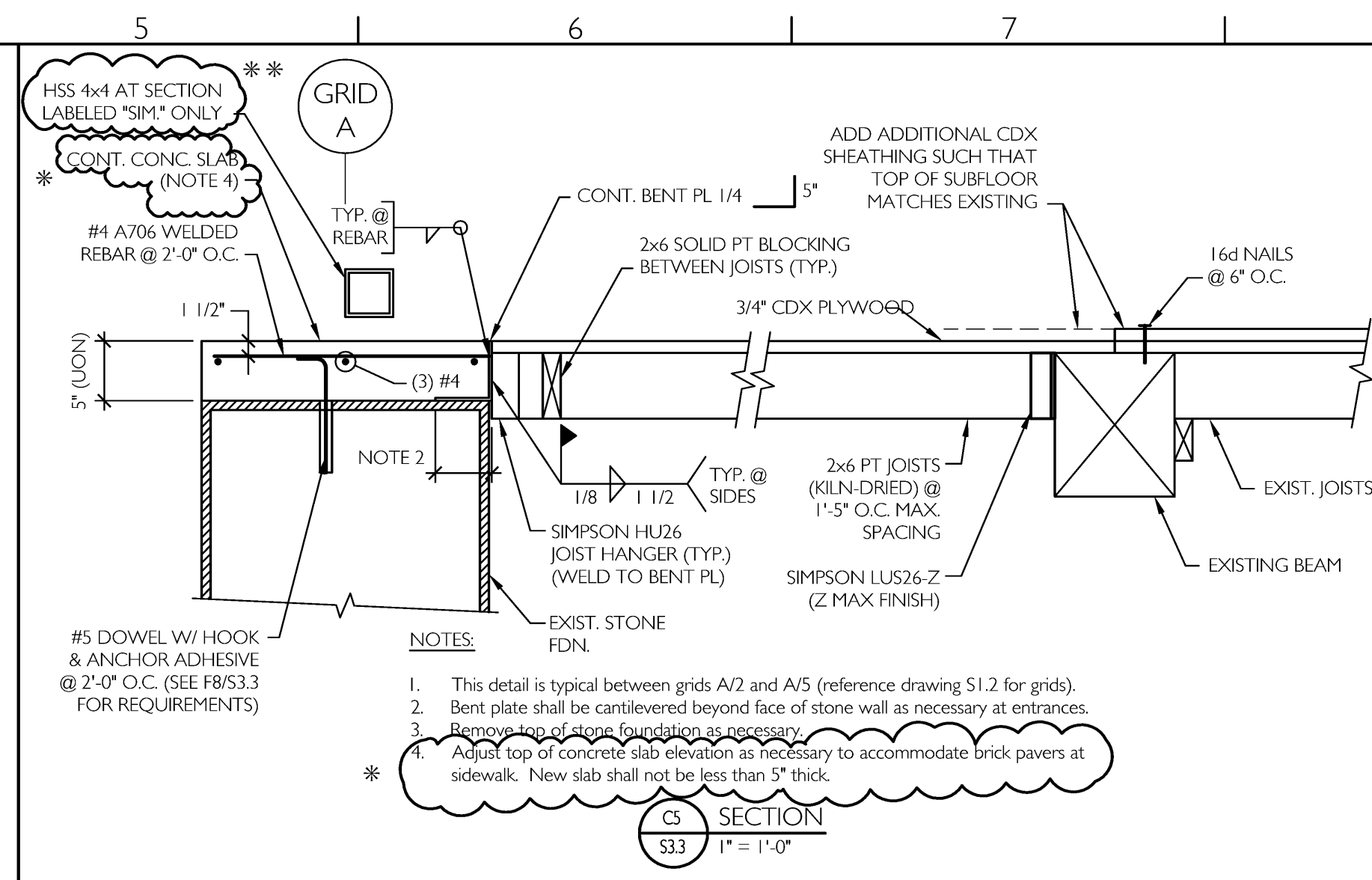
F1 TYPE P12 PIER PLAN
S33 1" = 1'-0"



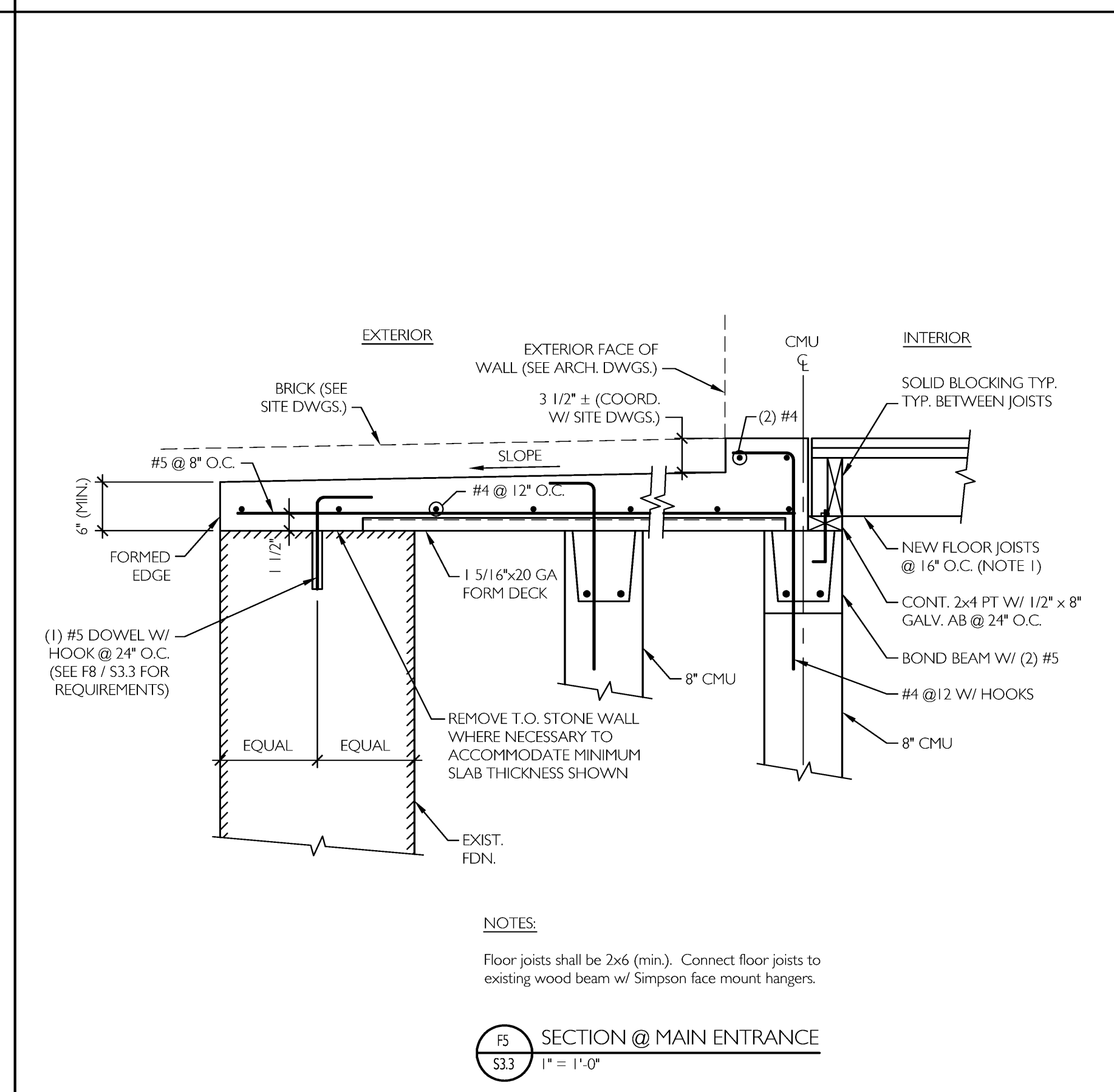
H1 TYPE P10 PIER PLAN
S33 1" = 1'-0"



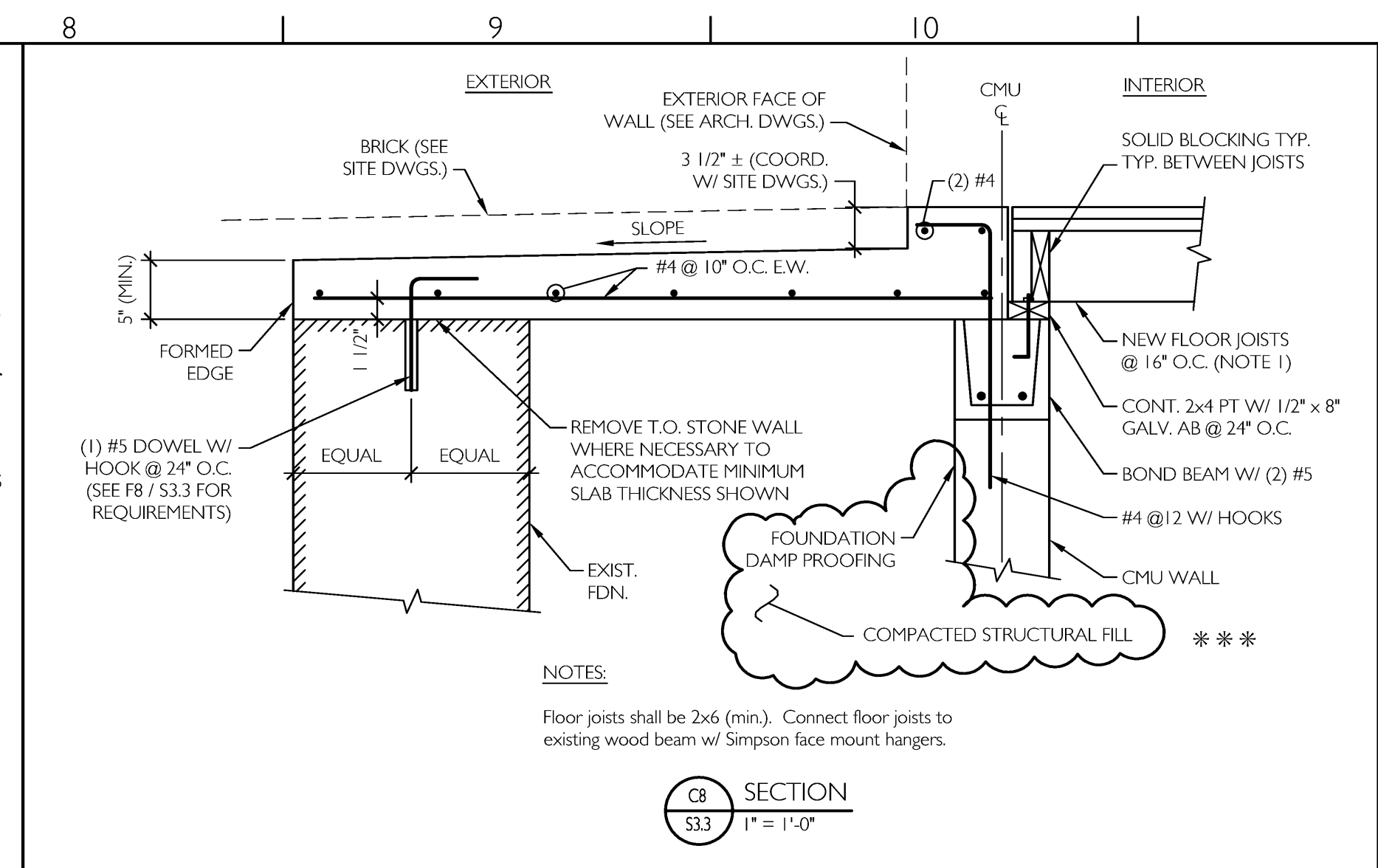
H3 TYPE P4 PIER PLAN
S33 1" = 1'-0"



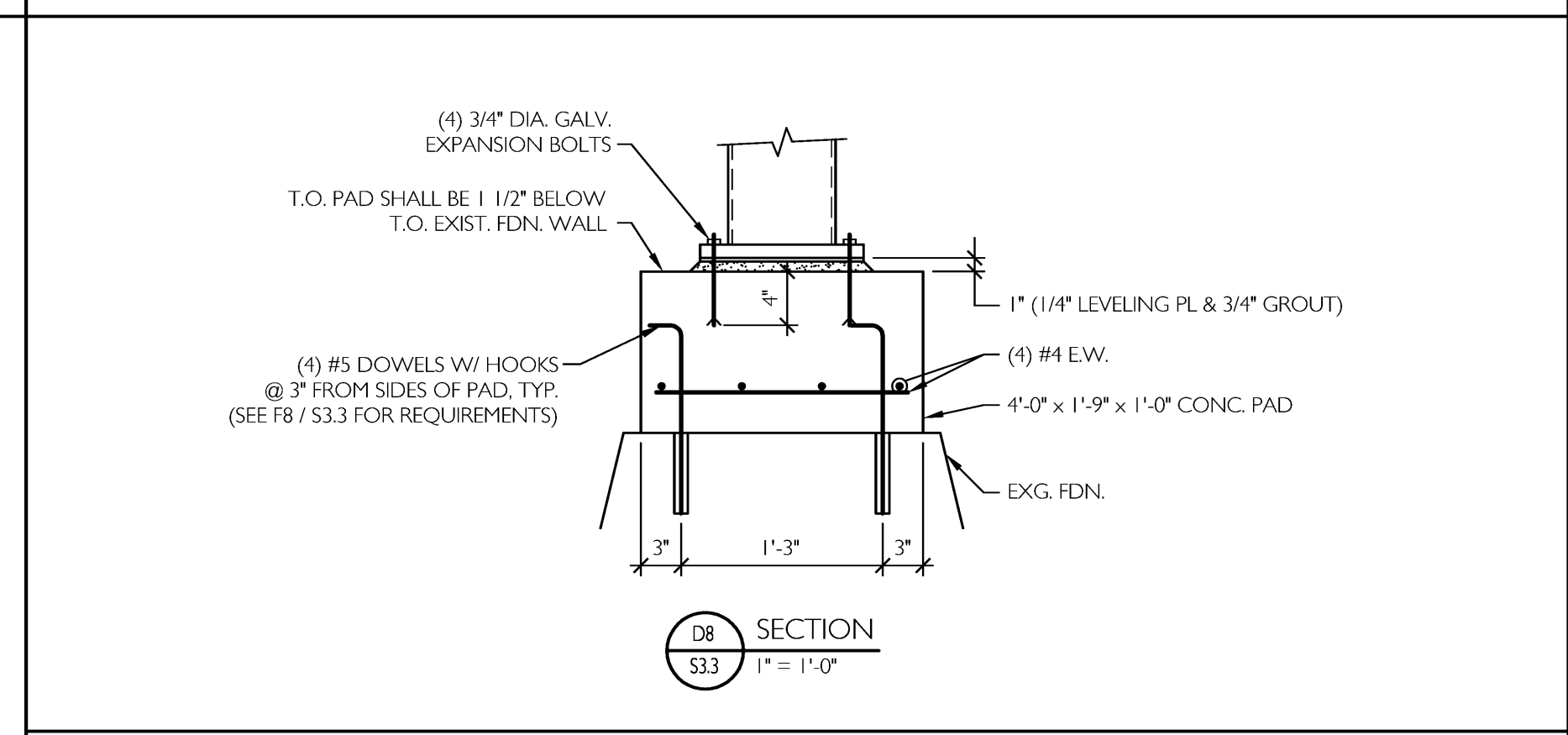
G5 SECTION
S33 1" = 1'-0"



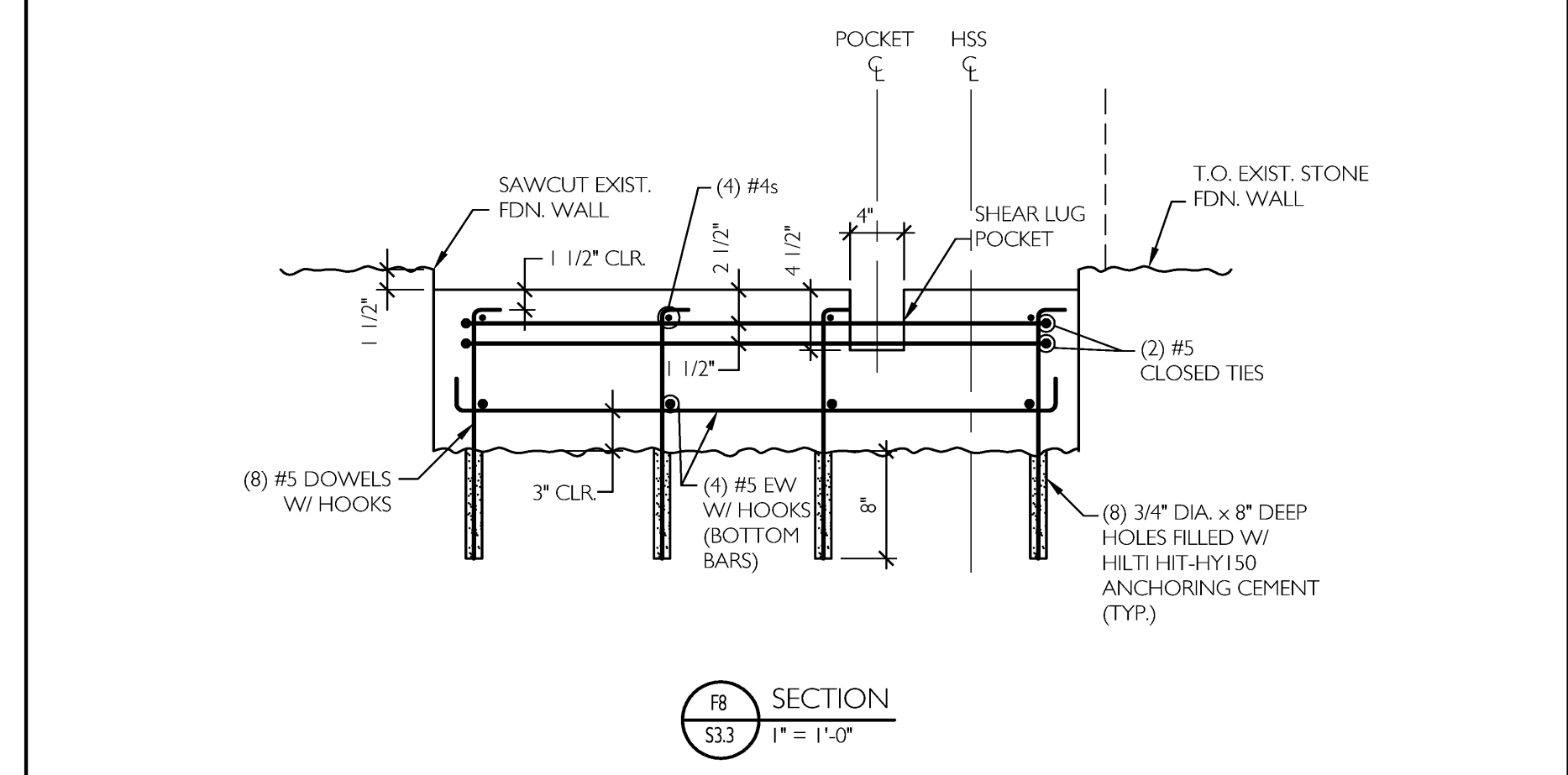
F5 SECTION @ MAIN ENTRANCE
S33 1" = 1'-0"



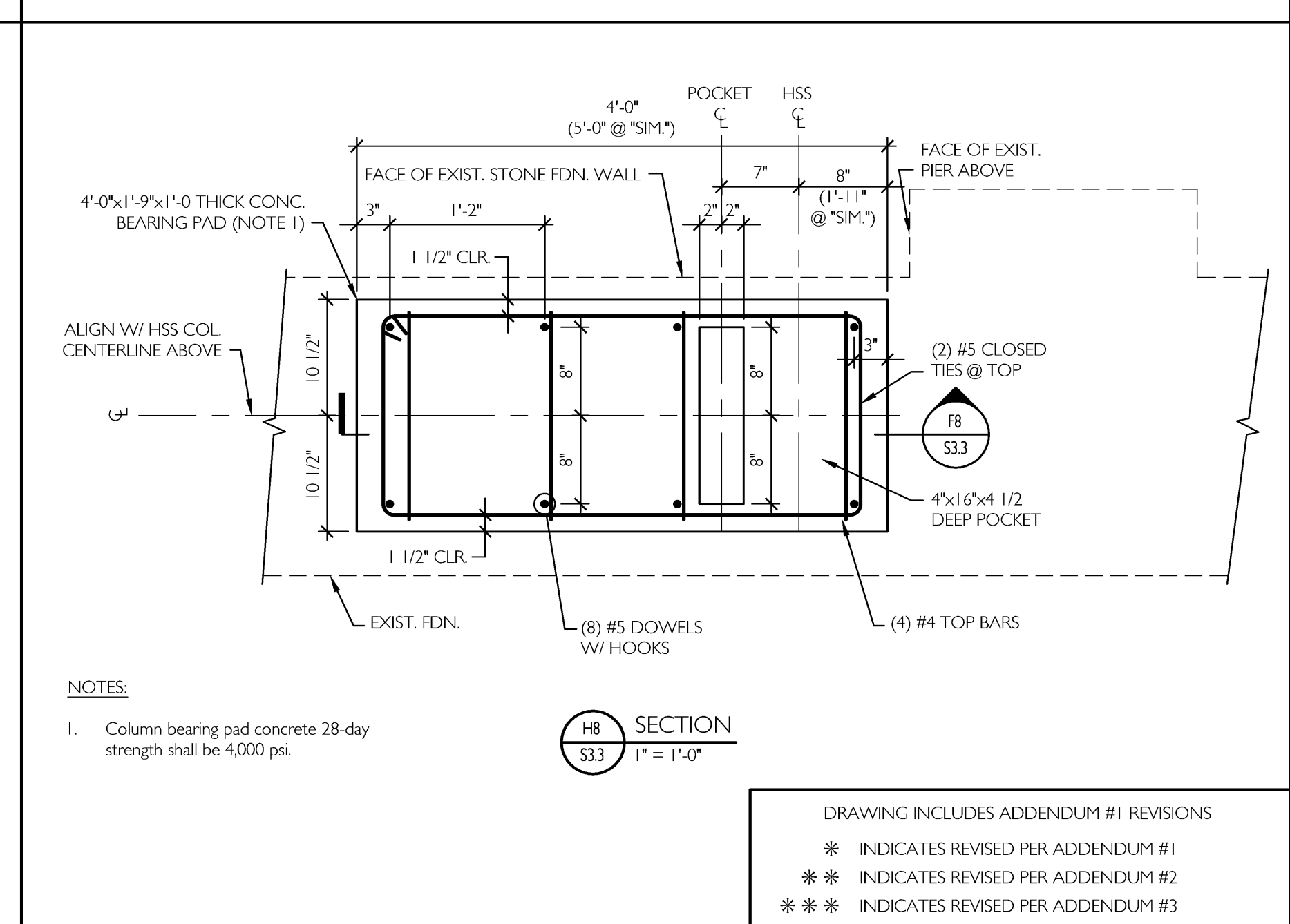
G8 SECTION
S33 1" = 1'-0"



D8 SECTION
S33 1" = 1'-0"



F8 SECTION
S33 1" = 1'-0"



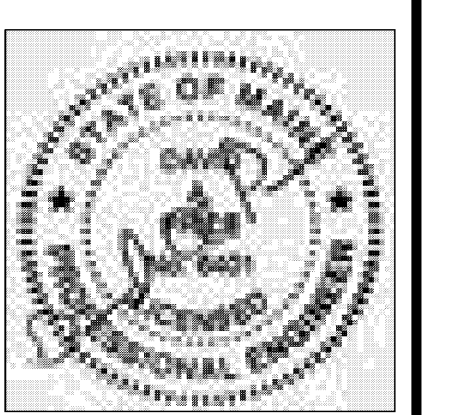
H8 SECTION
S33 1" = 1'-0"

DRAWING INCLUDES ADDENDUM #1 REVISIONS
* INDICATES REVISED PER ADDENDUM #1
** INDICATES REVISED PER ADDENDUM #2
*** INDICATES REVISED PER ADDENDUM #3

CWS Architects
Architecture
Space Planning
Value Design
434 Cumberland Avenue
Portland, ME 04101
Phone: (207) 774-4441
Fax: (207) 774-4016
www.CWSarch.com
Price Structural Engineers, Inc.
CWS/IFC DRAWINGS/S33.DWG
ISSUED FOR CONSTRUCTION JULY 21, 2009
Owner: **BAYSIDE MAINE LLC**
477 CONGRESS ST. SUITE 1012
PORTLAND, MAINE, 04101
Development Consultant: **SHINBERG CONSULTING, LLC**

RENOVATIONS TO 645 CONGRESS ST.
PORTLAND, ME 04101

Drawing Title: **MASONRY/CONCRETE FOUNDATION PLANS AND DETAILS**
Scale: As Noted
Date: 5/7/09
Revisions:



Drawing Number: **S3.3**