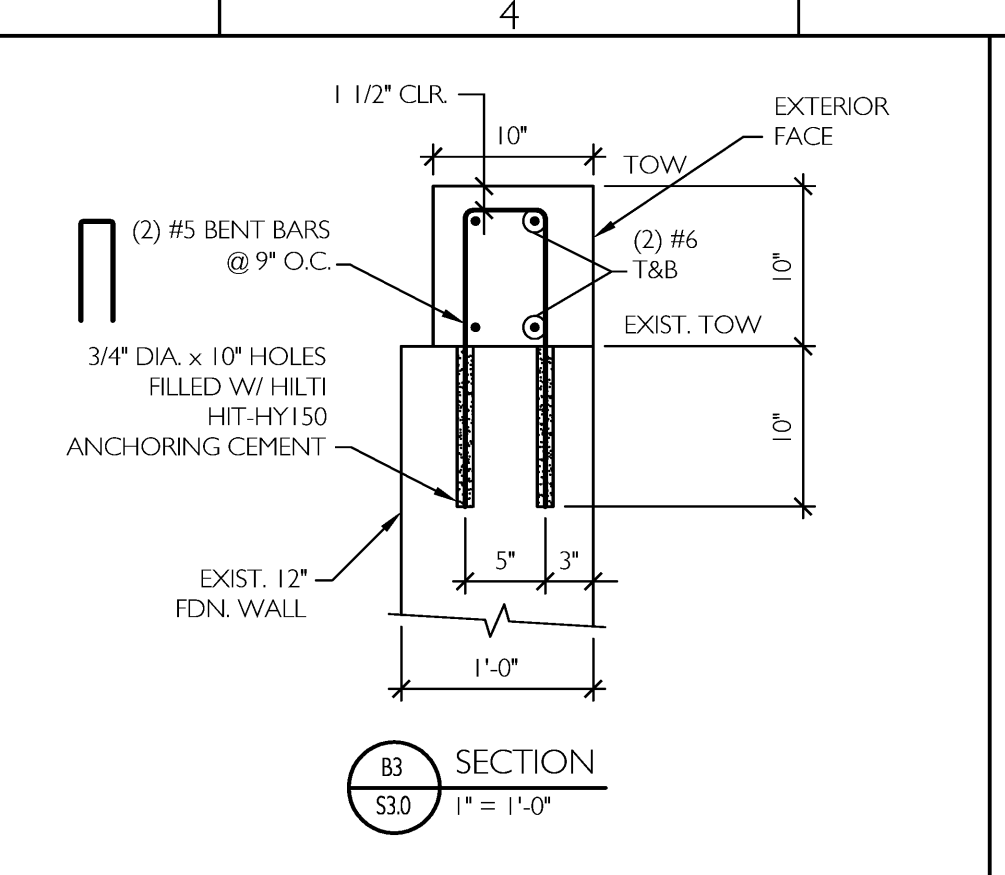
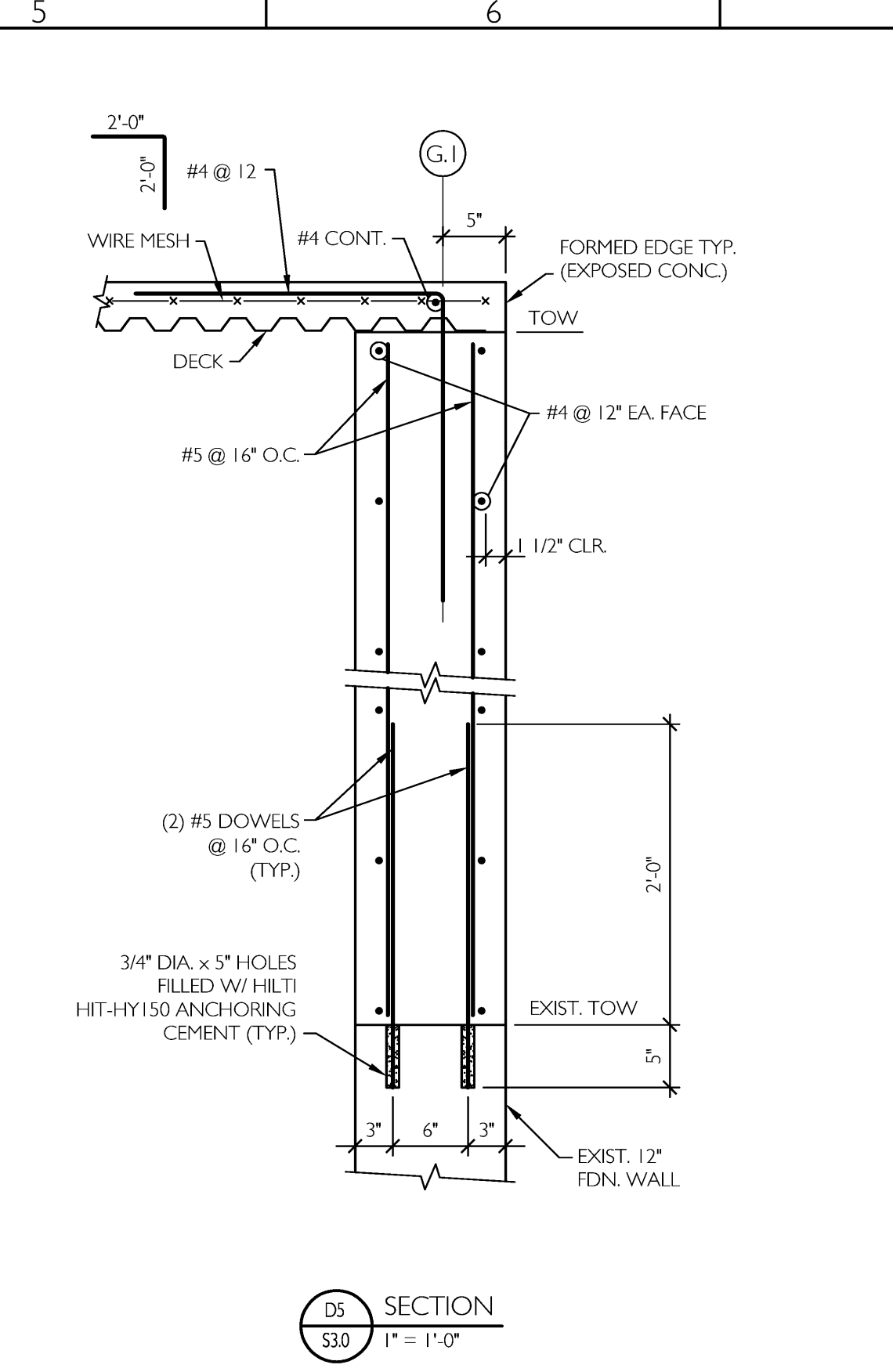


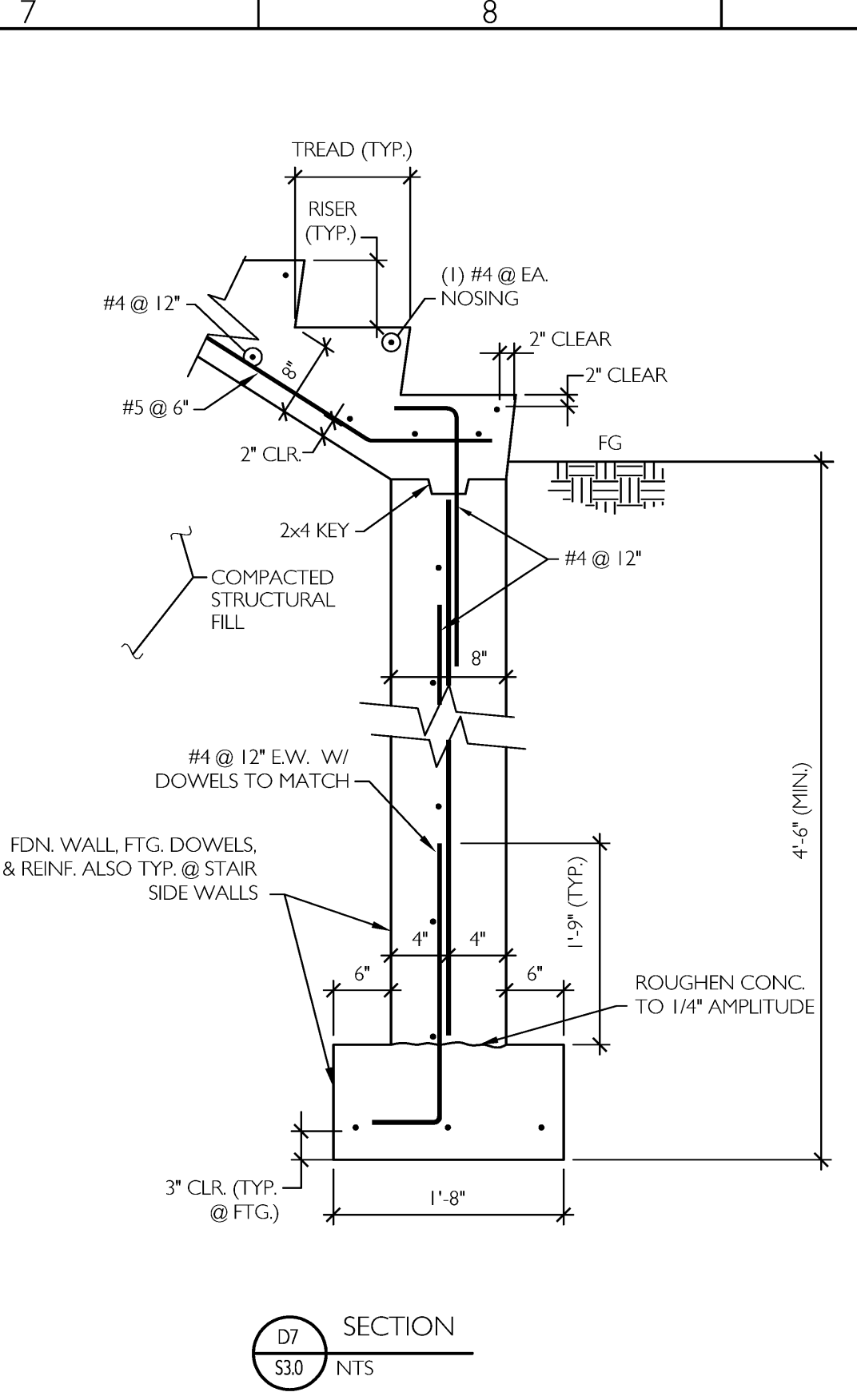
B1 SECTION
S30 NTS
1\"/>



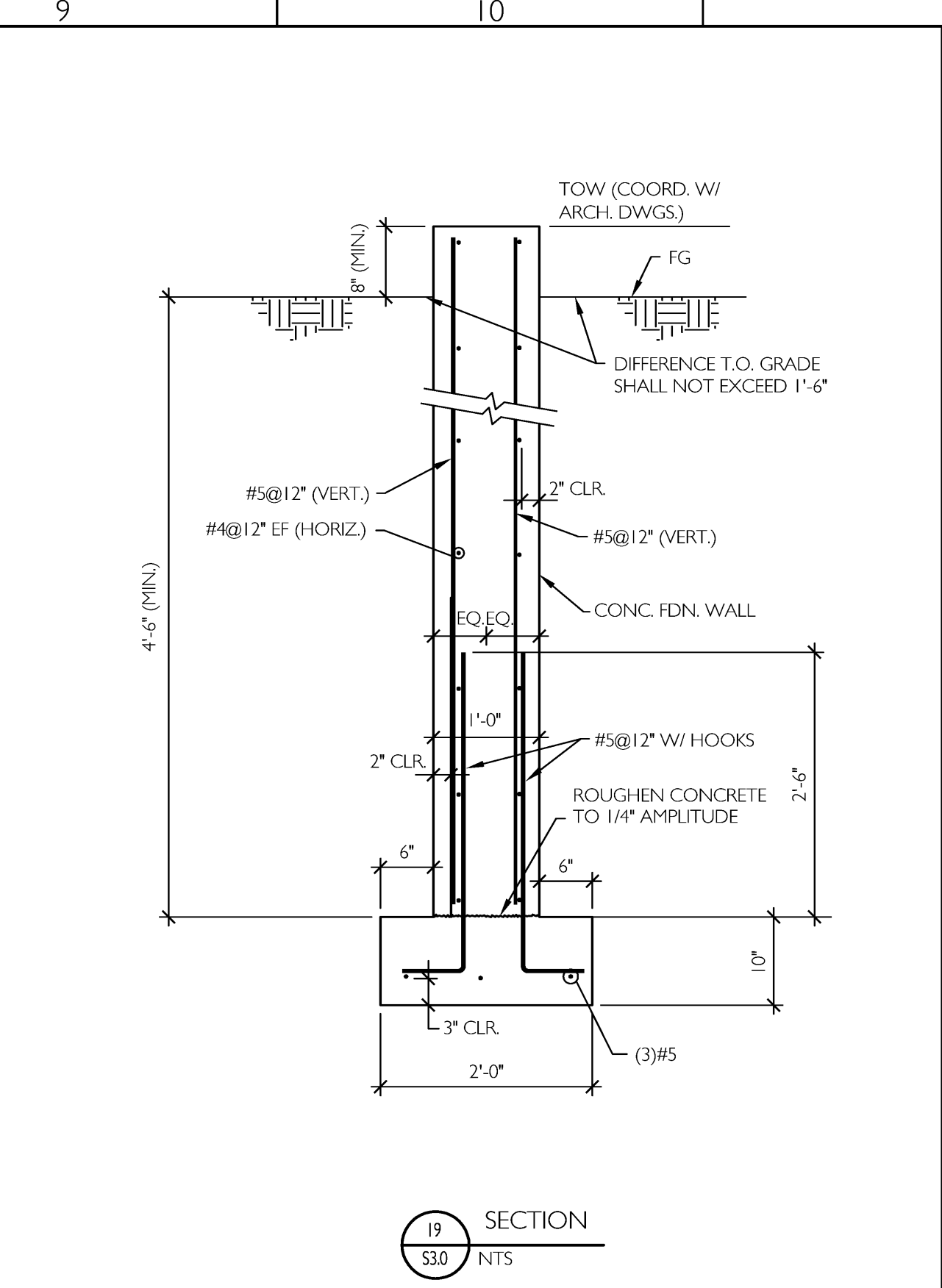
B3 SECTION
S30
1\"/>



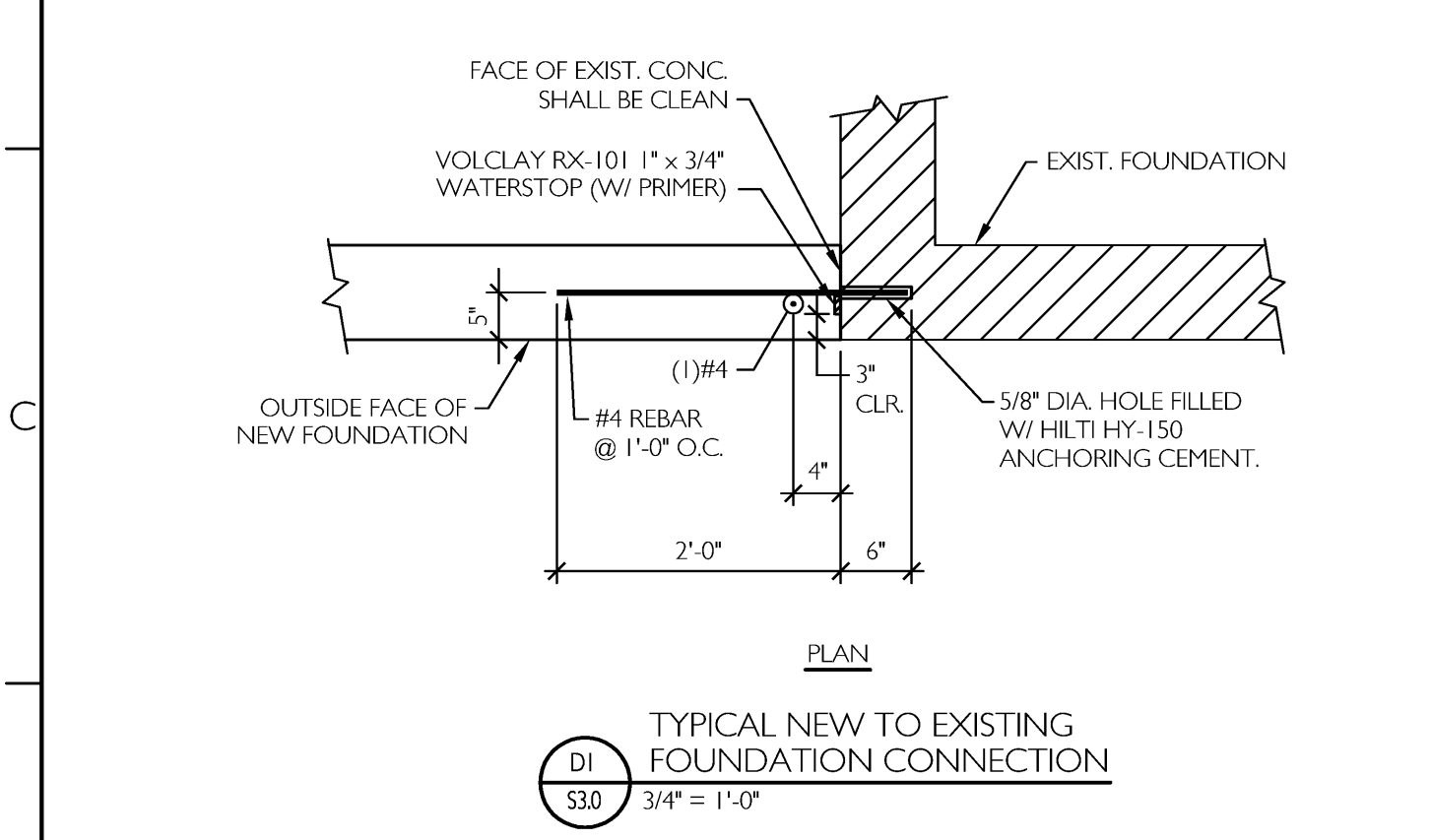
D5 SECTION
S30
1\"/>



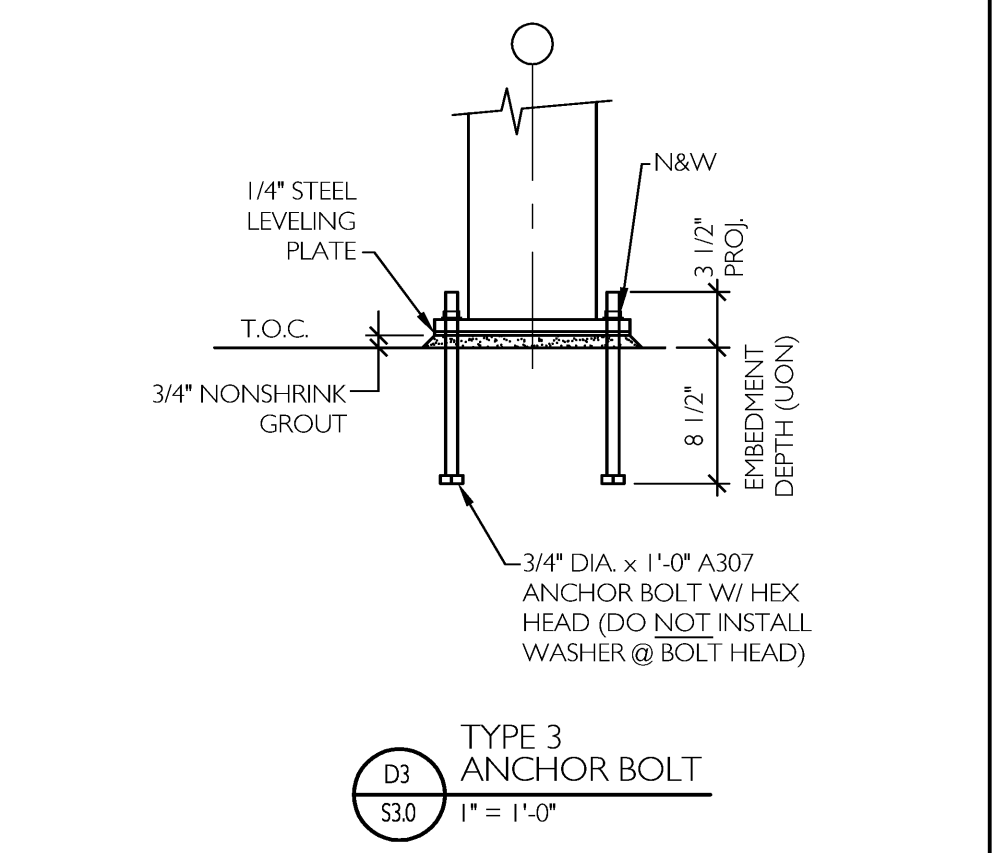
D7 SECTION
S30 NTS
1\"/>



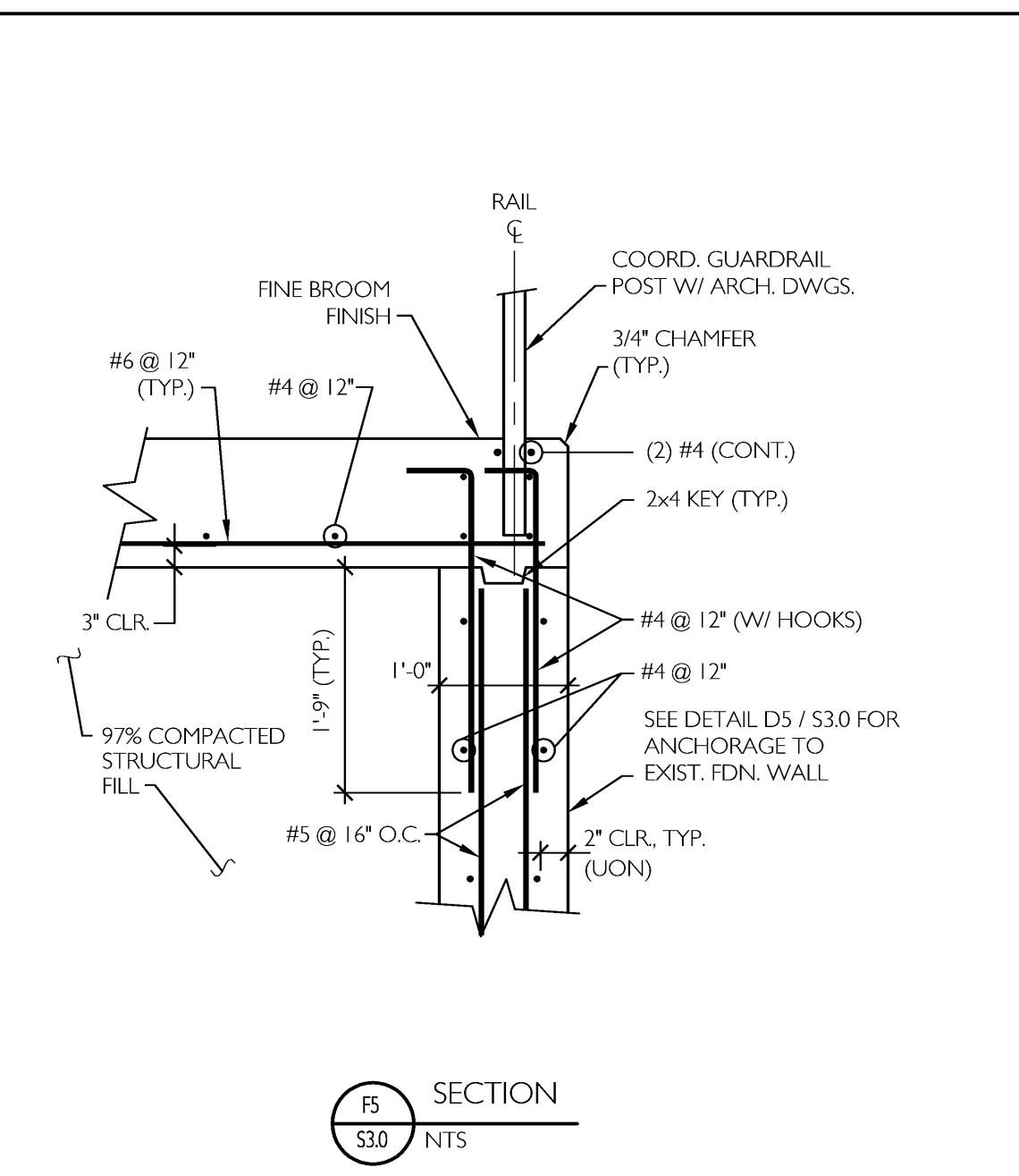
D9 SECTION
S30 NTS
1\"/>



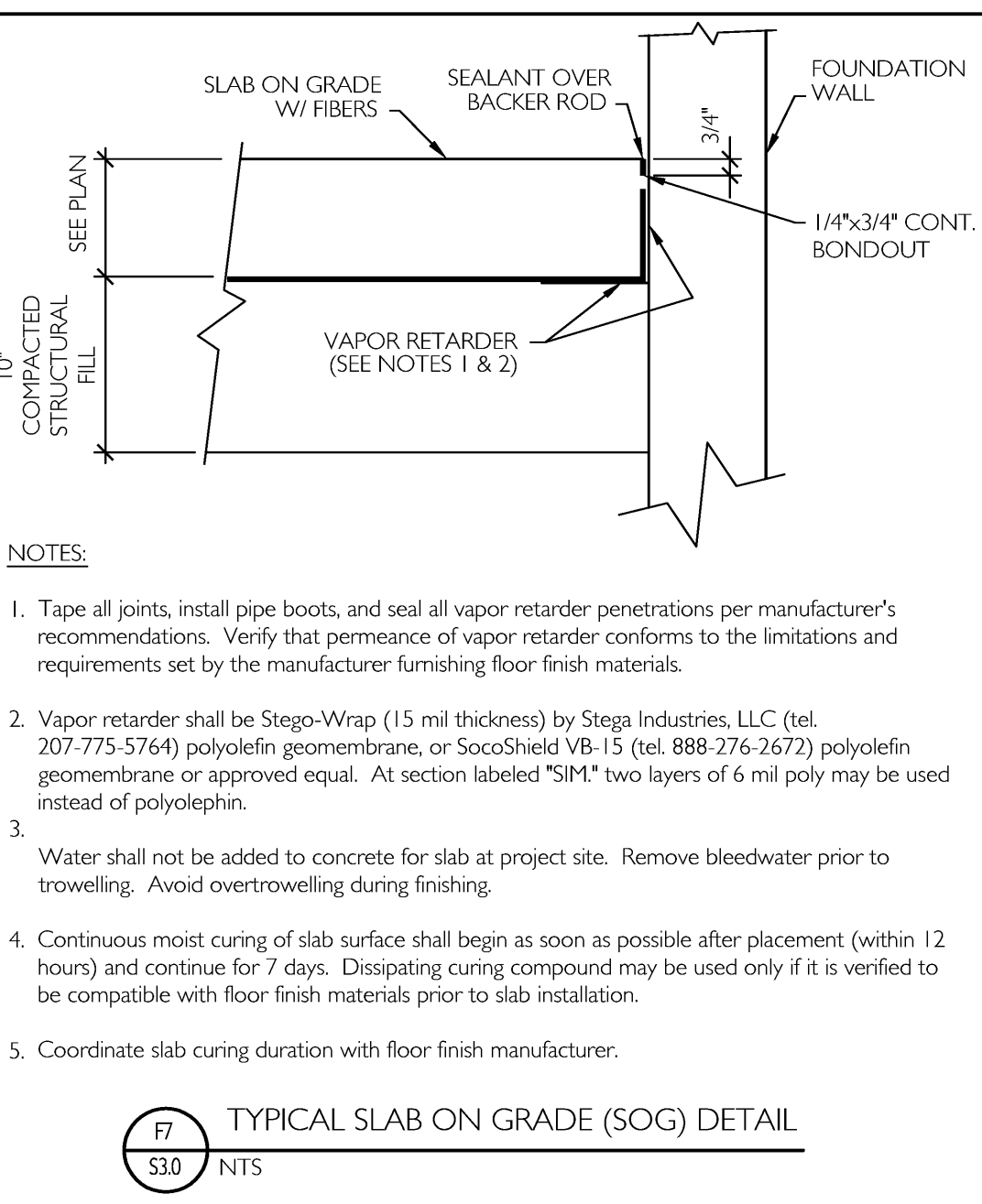
D1 PLAN
S30
3/4\"/>



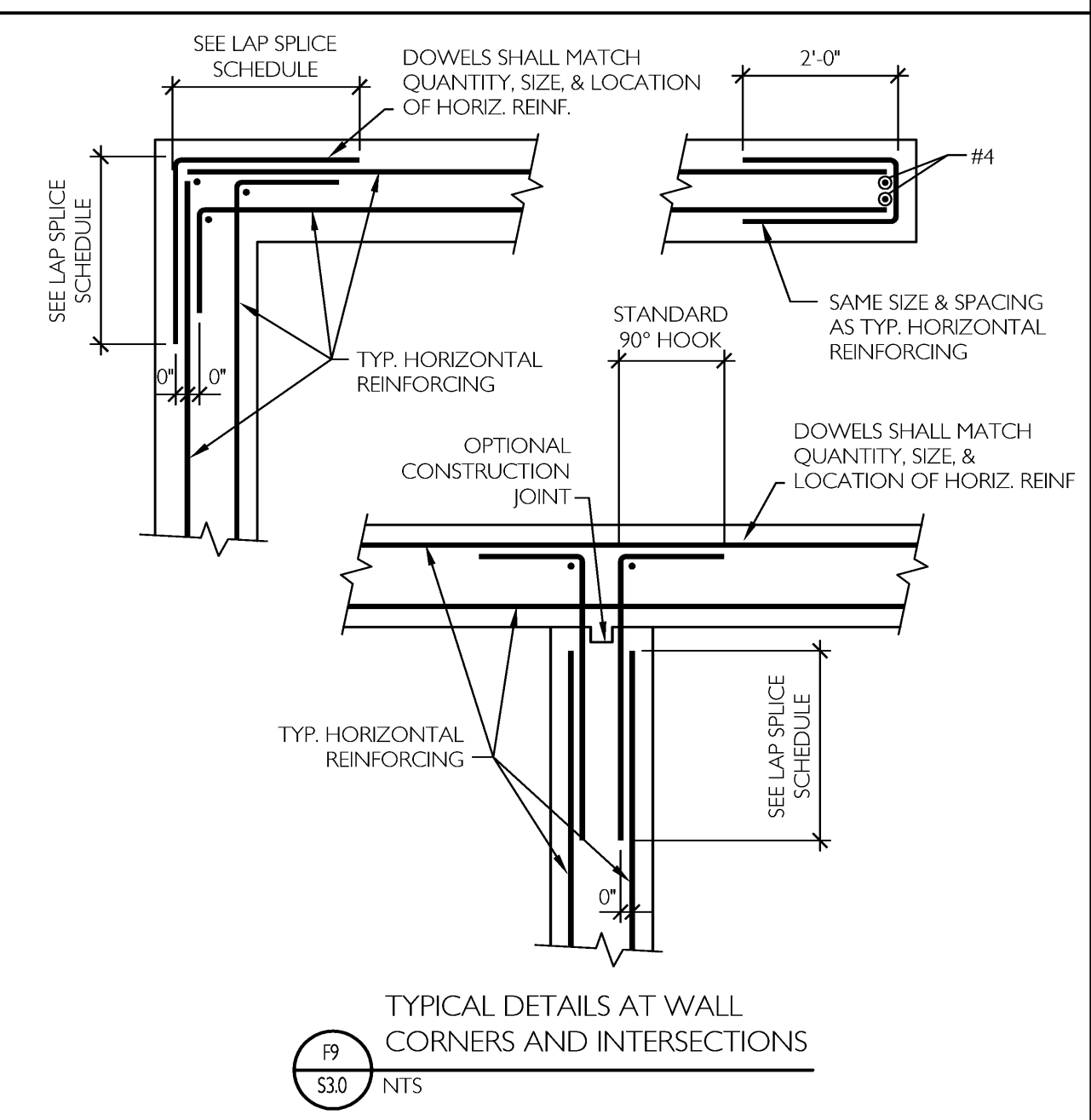
D3 SECTION
S30
1\"/>



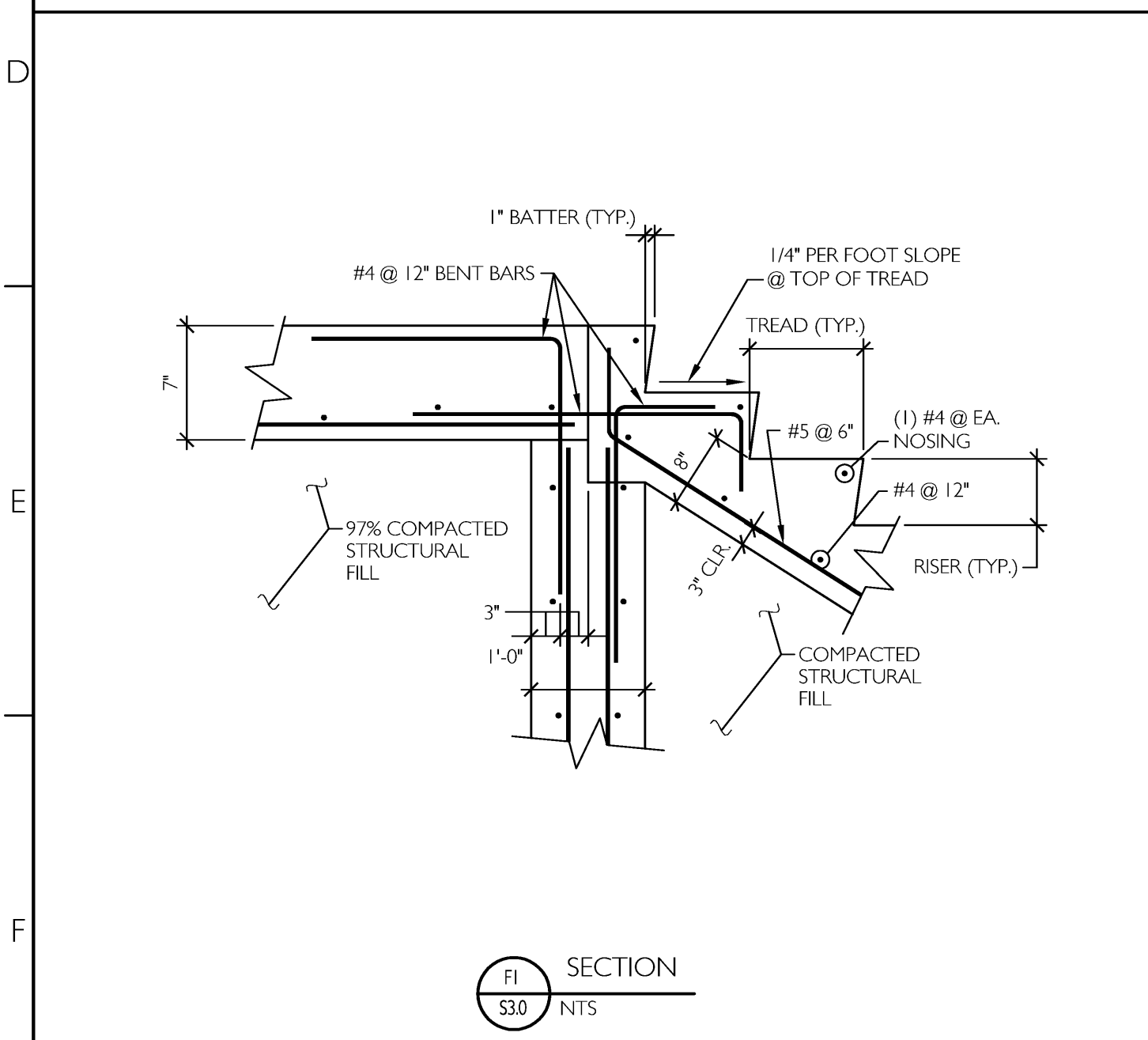
D5 SECTION
S30 NTS
1\"/>



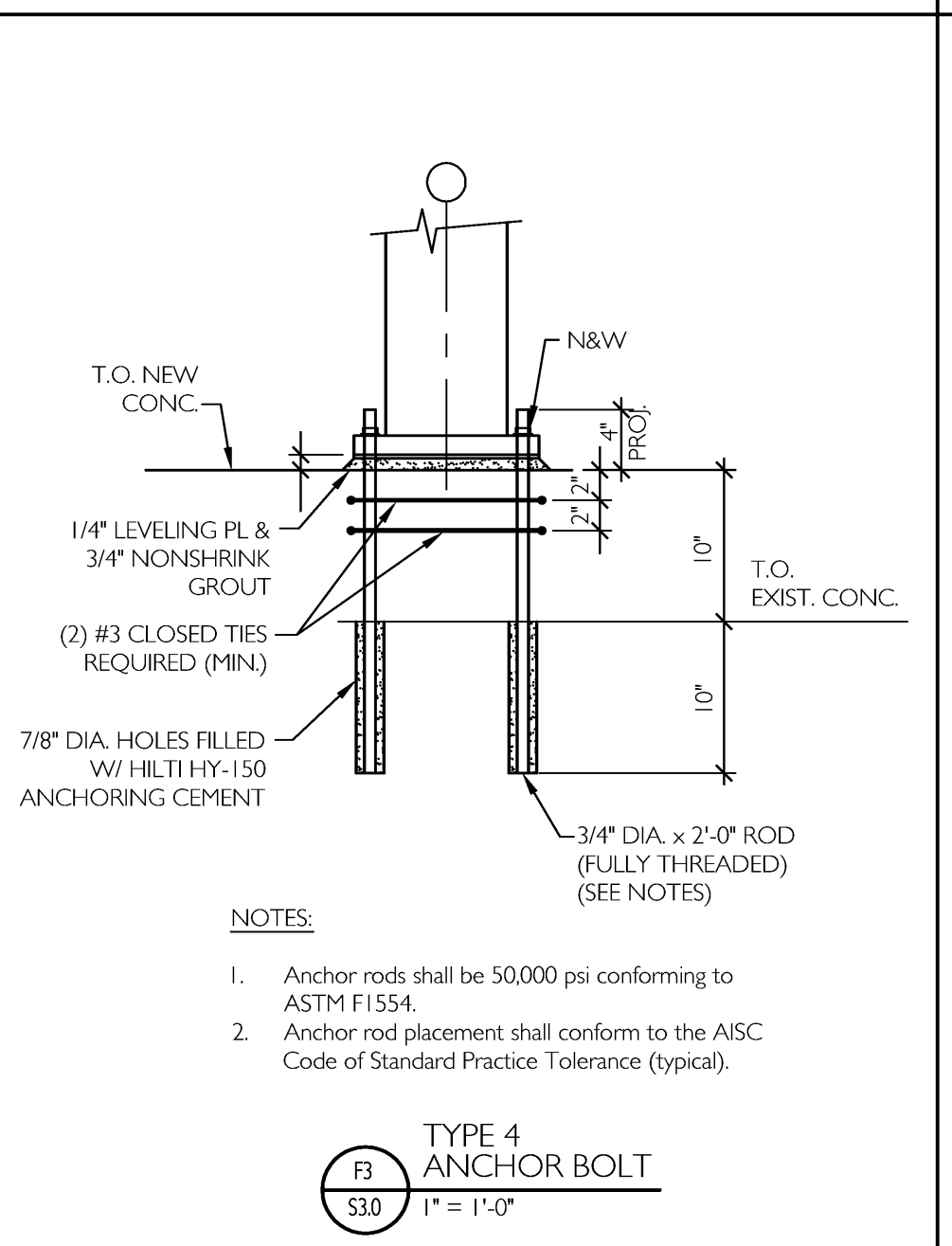
D7 SECTION
S30 NTS
1\"/>



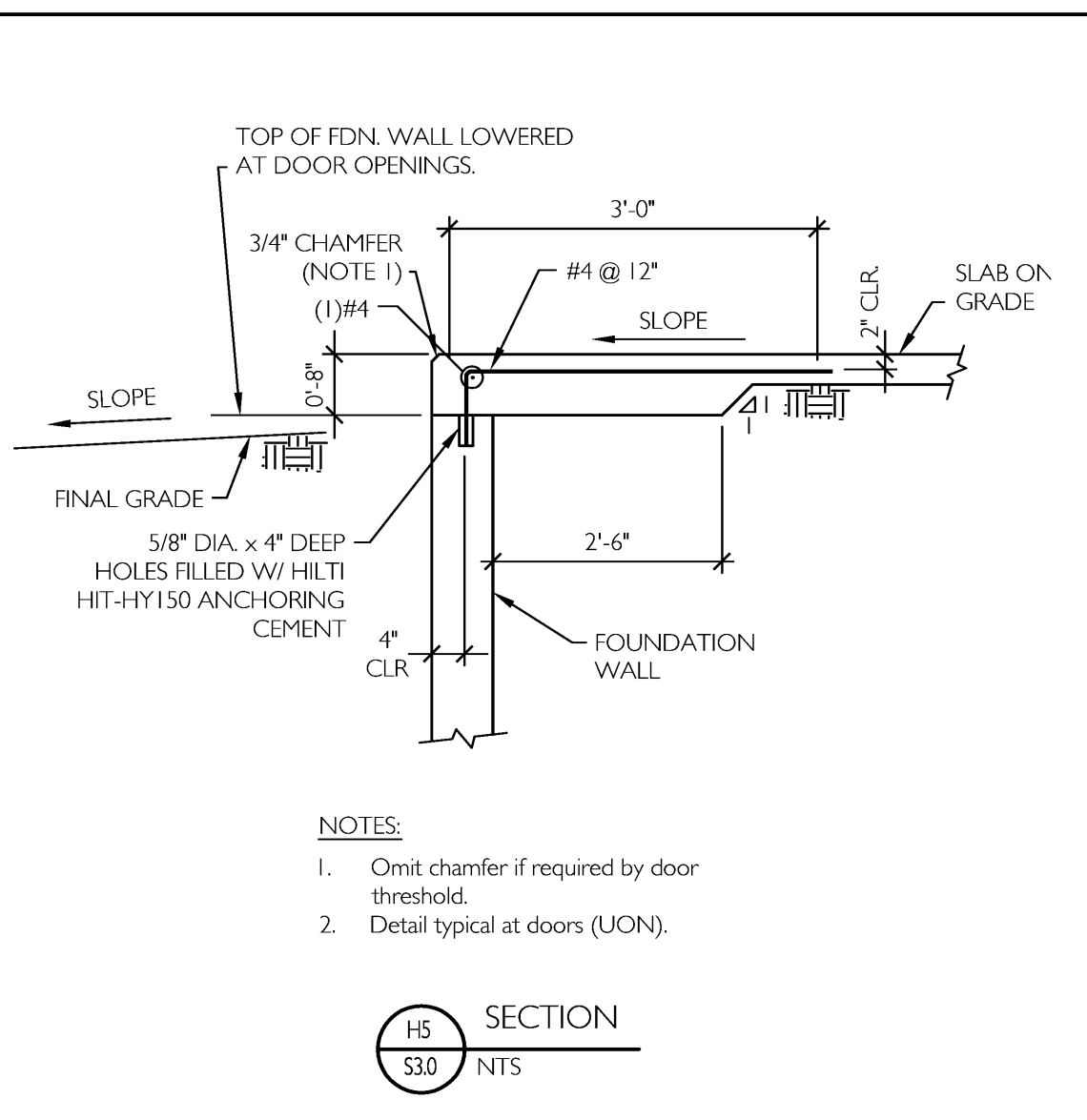
D9 SECTION
S30 NTS
1\"/>



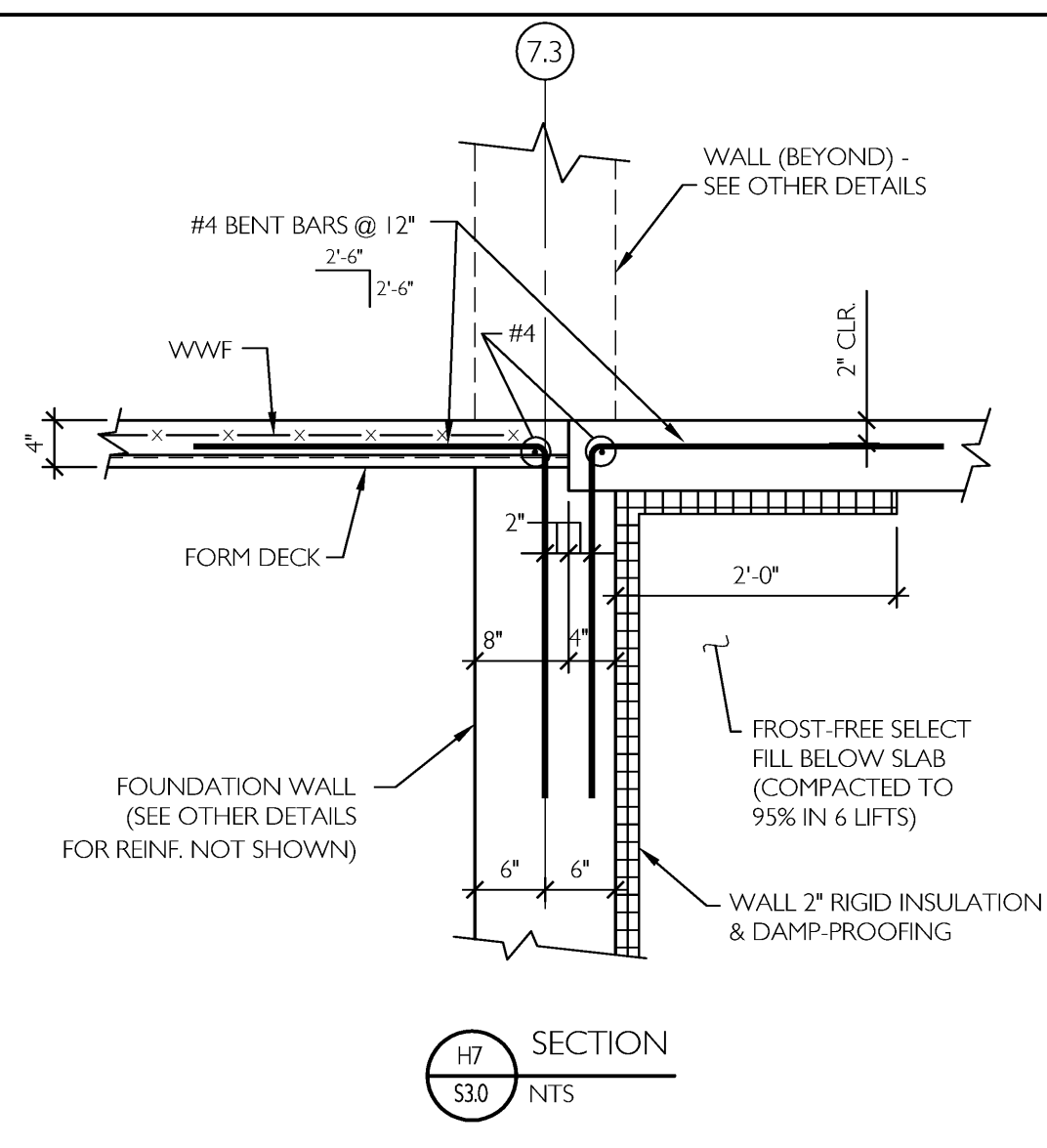
F1 SECTION
S30 NTS
1\"/>



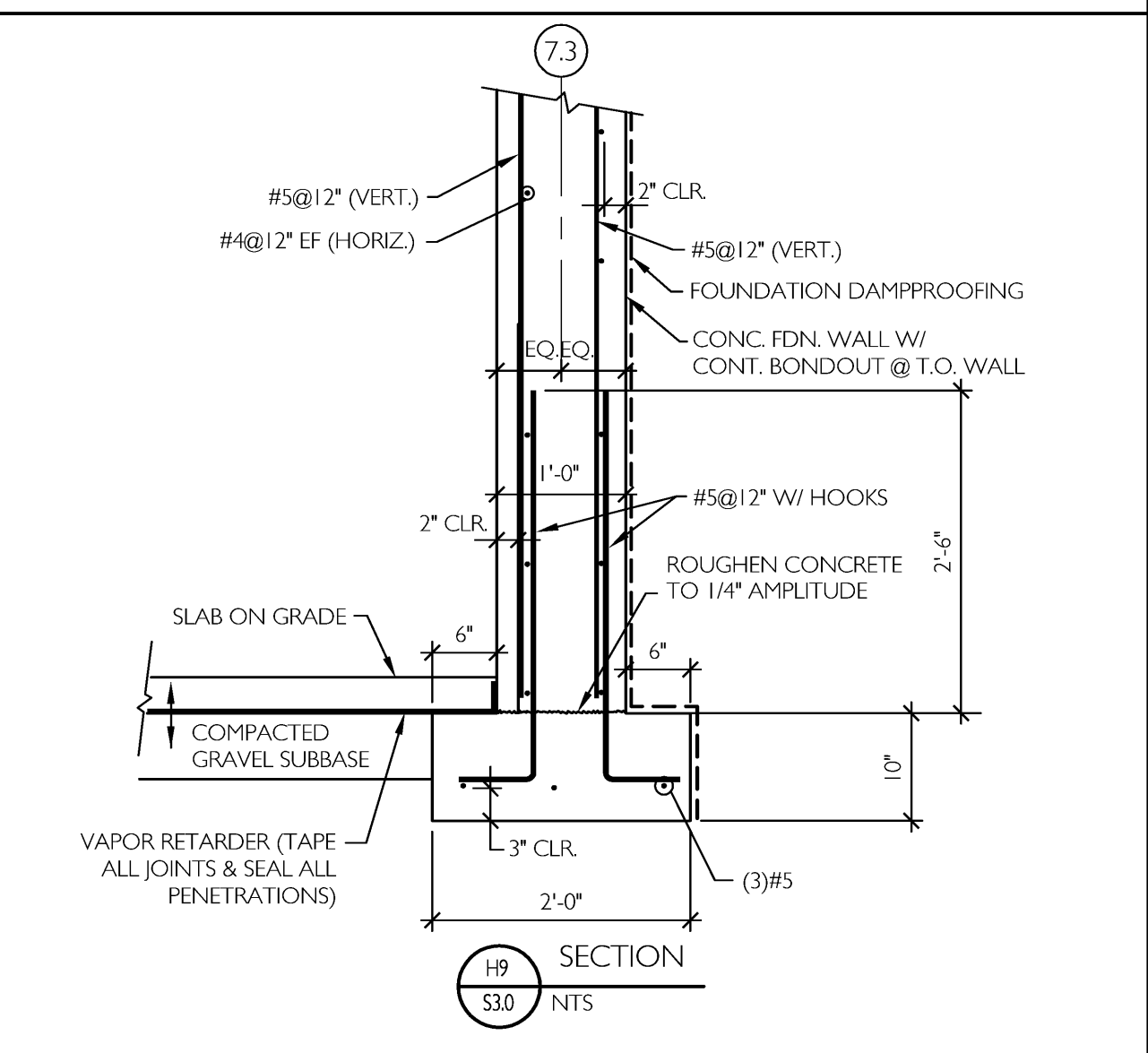
F3 SECTION
S30
1\"/>



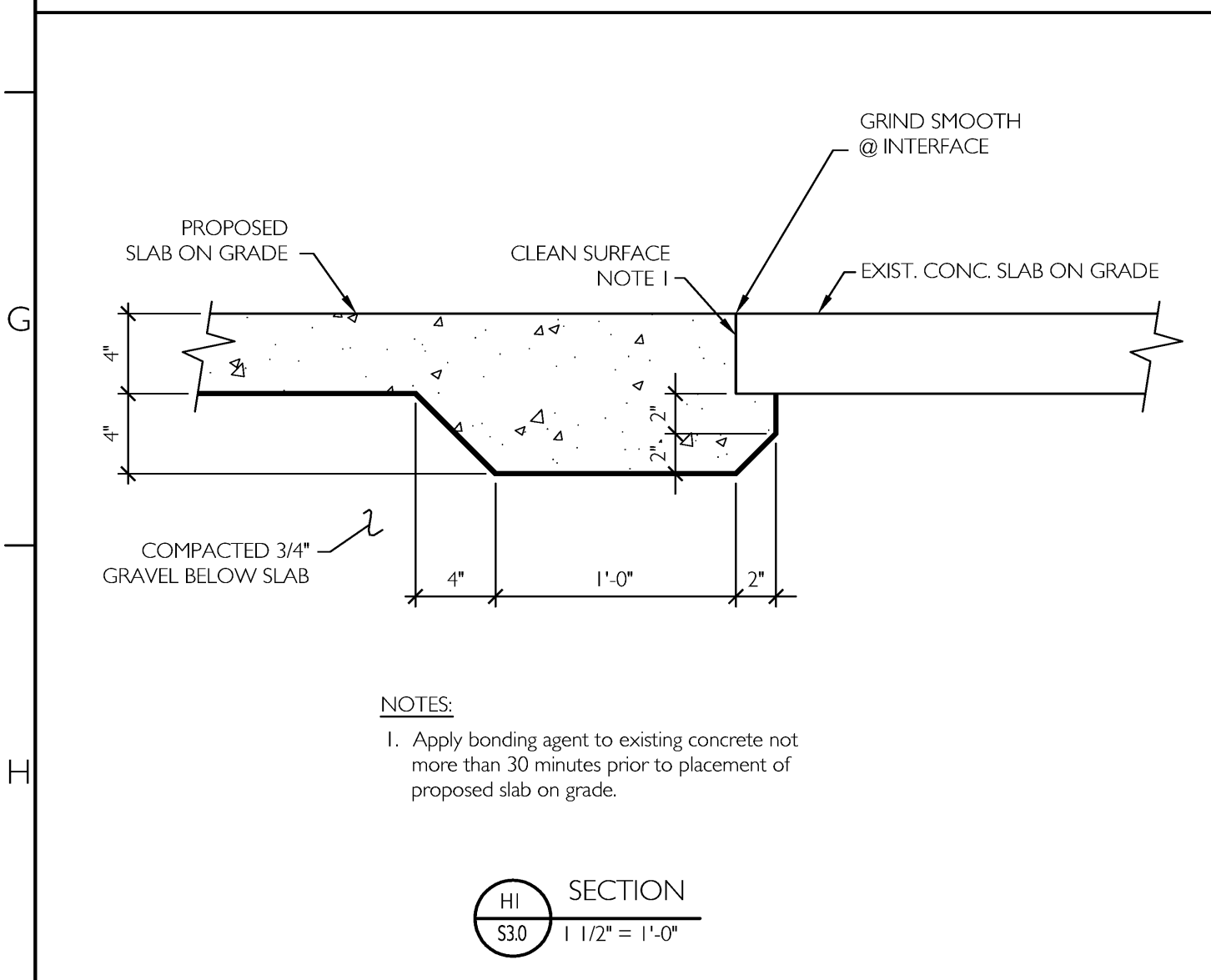
H5 SECTION
S30 NTS
1\"/>



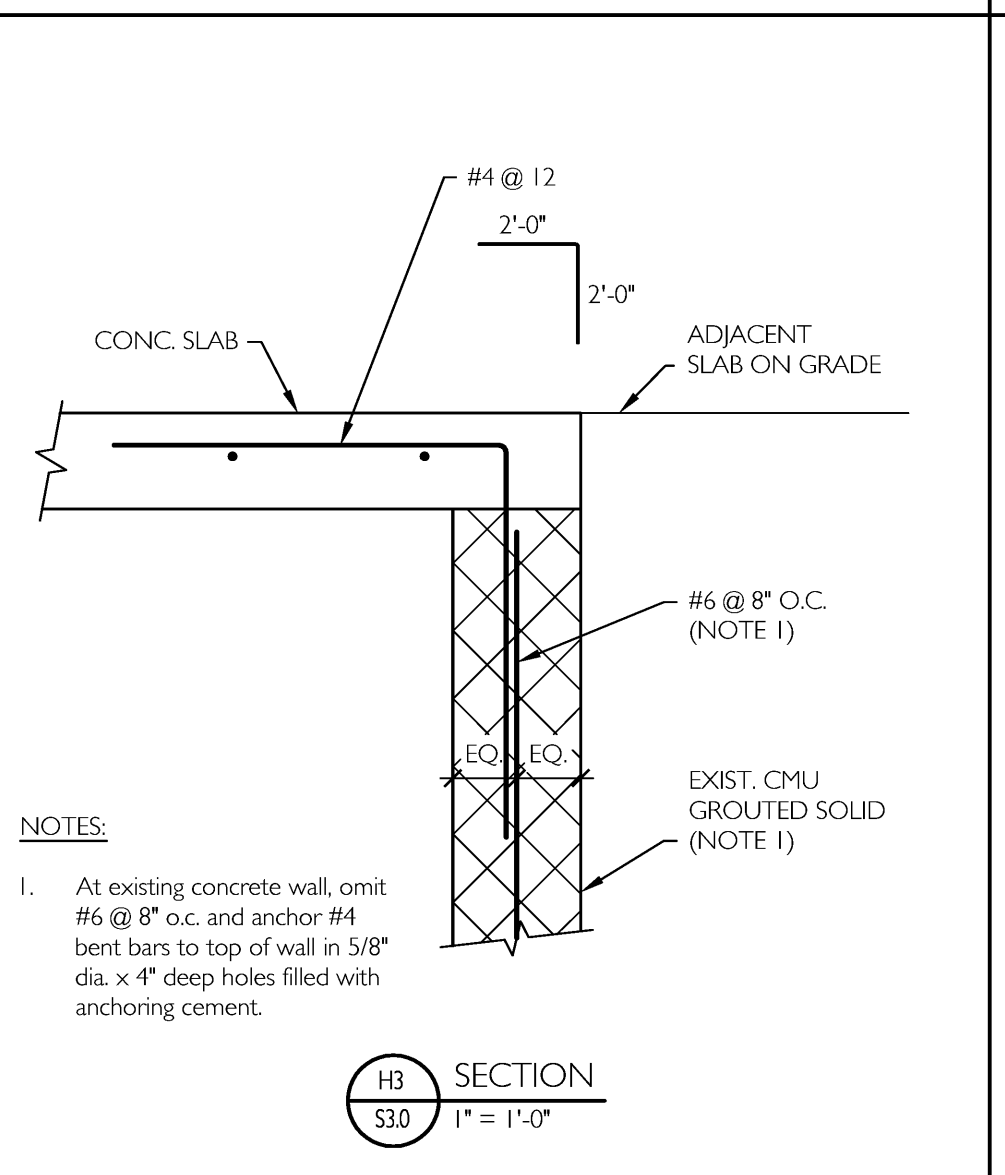
H7 SECTION
S30 NTS
1\"/>



H9 SECTION
S30 NTS
1\"/>



H1 SECTION
S30
1 1/2\"/>



H3 SECTION
S30
1\"/>

- NOTES:**
1. Tape all joints, install pipe boots, and seal all vapor retarder penetrations per manufacturer's recommendations. Verify that permeance of vapor retarder conforms to the limitations and requirements set by the manufacturer furnishing floor finish materials.
 2. Vapor retarder shall be Stego-Wrap (15 mil thickness) by Stega Industries, LLC (tel. 207-775-5764) polyolefin geomembrane, or SocoShield VB-15 (tel. 888-276-2672) polyolefin geomembrane or approved equal. At section labeled "SIM" two layers of 6 mil poly may be used instead of polyolefin.
 3. Water shall not be added to concrete for slab at project site. Remove bleedwater prior to trowelling. Avoid over-trowelling during finishing.
 4. Continuous moist curing of slab surface shall begin as soon as possible after placement (within 12 hours) and continue for 7 days. Dissipating curing compound may be used only if it is verified to be compatible with floor finish materials prior to slab installation.
 5. Coordinate slab curing duration with floor finish manufacturer.

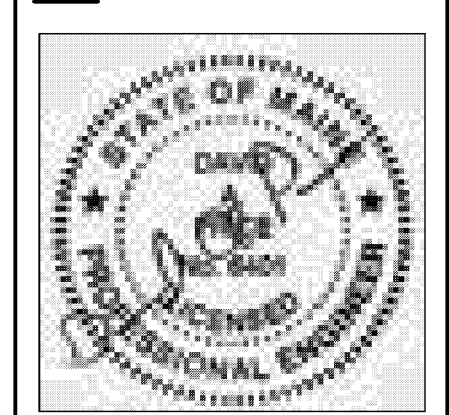
- NOTES:**
1. Anchor rods shall be 50000 psi conforming to ASTM F1554.
 2. Anchor rod placement shall conform to the AISC Code of Standard Practice Tolerance (typical).

CWS Architects
Architecture
Space Planning
Value Design
 434 Cumberland Avenue
 Portland, ME 04101
 Phone: (207)774-4441
 Fax: (207)774-4016
 www.CWSarch.com
Price Structural Engineers, Inc.
 CWS/IFC DRAWINGS/S30.DWG
 ISSUED FOR CONSTRUCTION JULY 21, 2009
 Owner: **BAYSIDE MAINE LLC**
 477 CONGRESS ST. SUITE 1012
 PORTLAND, MAINE, 04101
 Development Consultant: **SHINBERG CONSULTING, LLC**

RENOVATIONS TO 645 CONGRESS ST.
 PORTLAND, ME 04101

Drawing Title: MASONRY/CONCRETE FOUNDATION PLANS AND DETAILS

Scale: As Noted
 Date: 5/7/09
 Revisions:



Drawing Number: **S3.0**