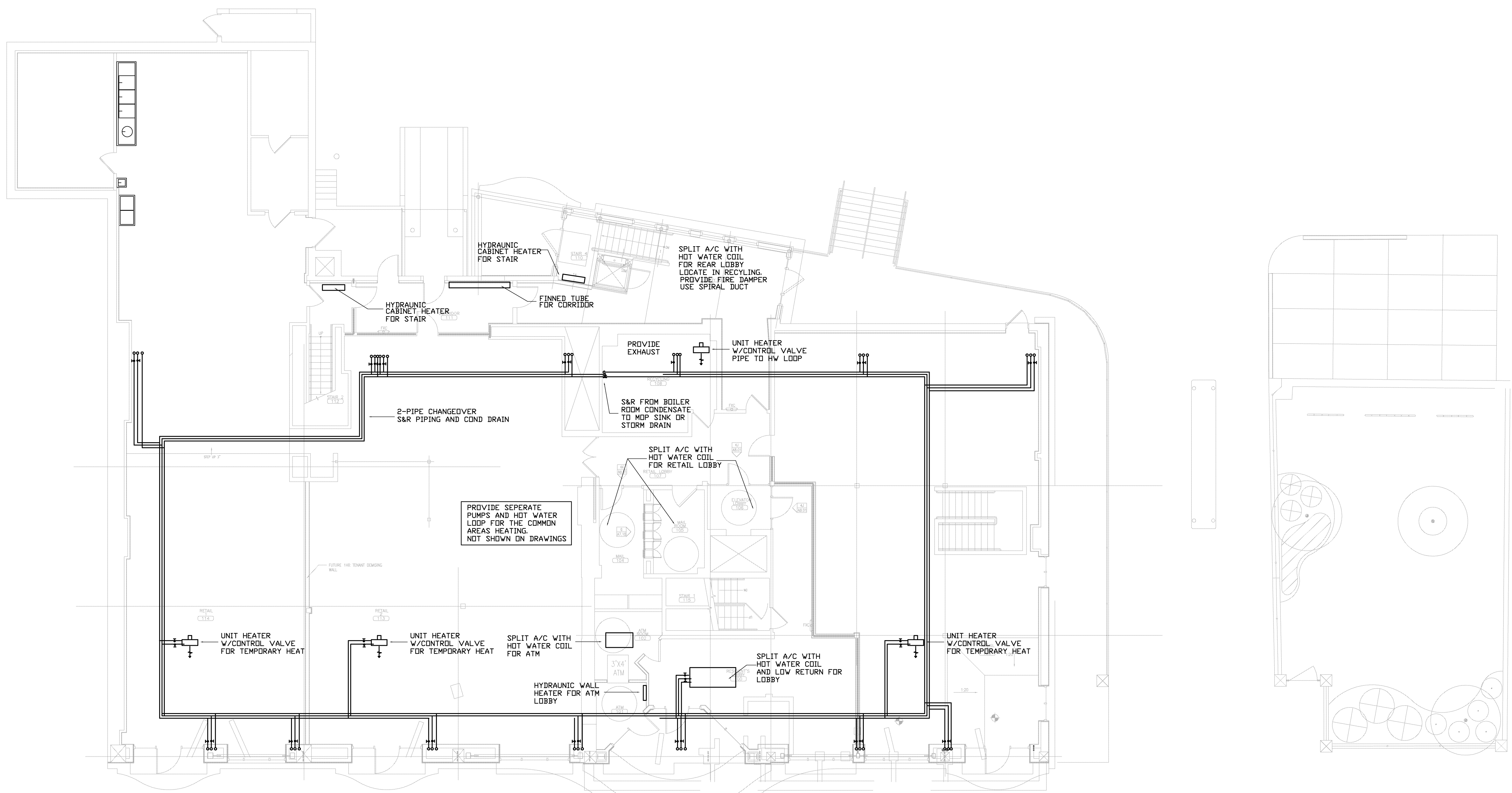


Development Consultant
SHINBERG
 CONSULTING
 477 CONGRESS ST.
 5TH FLOOR
 PORTLAND MAINE, 04101



RENOVATIONS TO
 645 CONGRESS ST.
 PORTLAND, ME 04101

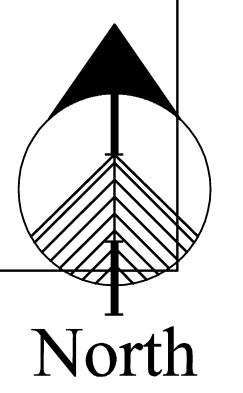
Project No: 08.436

Drawing Title:
**FIRST FLOOR
 MECHANICAL
 PLUMB. PLAN**

Scale: AS NOTED
 Date: 5-27-09

- Revisions:
- ▲
 - ▲
 - ▲
 - ▲
 - ▲
 - ▲

ZADE ASSOCIATES LLC
 CONSULTING ENGINEERS
 140 BEACH STREET, BOSTON, MA 02111
 TEL. (617) 338-4406
 FAX. (617) 451-2540
 E-MAIL: zadecc@aol.com



Drawing Number:
MP1.1

A SECOND FLOOR PLUMB. PLAN

SCALE: 1/8" = 1'-0"

NOT FOR CONSTRUCTION