

NOTE: CATCH BASINS SHALL BE CLEANED AND MAINTAINED DURING AND AFTER CONSTRUCTION. CASCO TRAPS SHALL BE INSTALLED IN ALL CATCH BASINS IMMEDIATELY AFTER PLACEMENT.

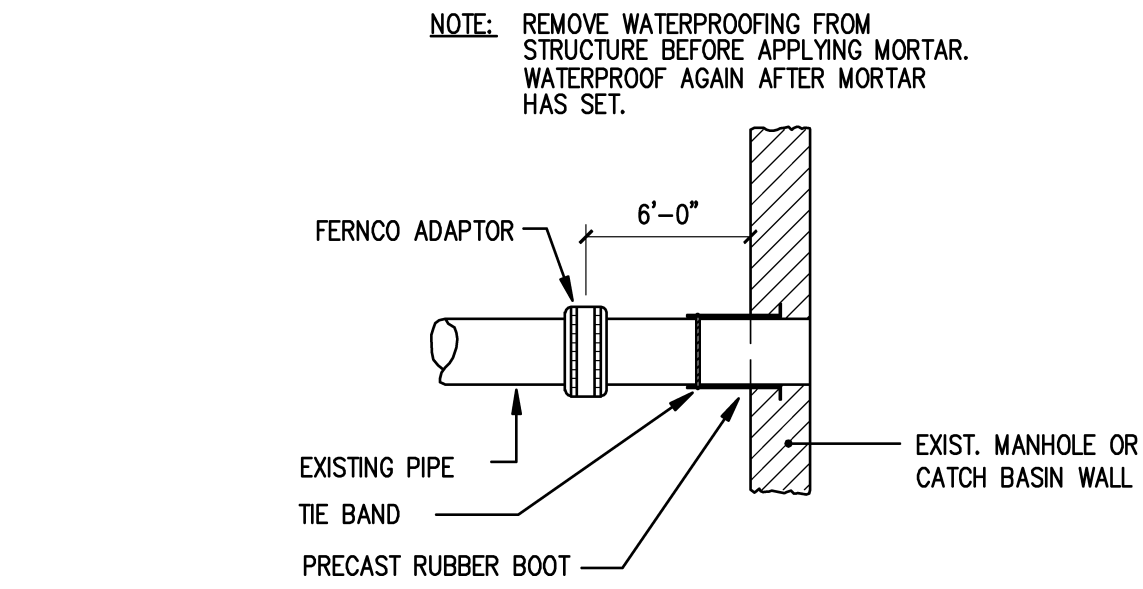
CATCH BASIN DETAIL

NTS

1. ALL CONCRETE SHALL BE CLASS "A" AND HAVE A MINIMUM ULTIMATE COMPRESSIVE STRENGTH OF 4000 LBS. PER SQ. INCH AT THE END OF 28 DAYS, UNLESS OTHERWISE NOTED.
2. PRECAST REINFORCED CONE BARREL MANUFACTURED PER ASTM SPEC. C-476-67
3. SEWER BRICK SHALL CONFORM TO ASTM SPEC. DESIGNATE ON C-32-63, GRADE MA AND SA.
4. ALL MANHOLES SHALL HAVE A BITUMINOUS WATERPROOFING APPLIED TO THE EXTERIOR SURFACE. IF CONSTRUCTED OF BRICK MASONRY, SURFACE SHALL BE PLASTERED WITH A SMOOTH MORTAR FINISH 3/8" THICK. AFTER THE MORTAR HAS SET, THE SURFACE SHALL BE WATERPROOFED AS REQUIRED BY SUPPLEMENTAL SPECIFICATIONS SECTION 604.
5. CASTINGS SHALL CONFORM TO ASTM DESIGNATION A48-CLASS 35. ALL PARTS OF CASTINGS, EXCEPT FINISHED SURFACE, SHALL RECEIVE A COAT OF COAL TAR PITCH VARNISH OR ASPHALTUM PAINT WHICH SHALL BE SMOOTH AND TOUGH BUT NOT BRITTLE.
6. MANHOLES MAY BE CONSTRUCTED OF MASONRY, PRECAST REINFORCED CONCRETE, OR CAST IN PLACE.
7. ALL PRECAST MANHOLES AND CATCH BASINS SHALL BE IDENTIFIED BY STATION AND OFFSET, PAINTED ON THE SIDE OF THE STRUCTURE BY THE MANUFACTURER.
8. STORM AND SEWER MANHOLES SHALL HAVE SOLID COVERS WITH ONE DRILLED PICK HOLE.
9. EXISTING MANHOLES, CATCH BASINS, FRAMES, AND COVERS SHALL BE SALVAGED BY THE CONTRACTOR, AND SHALL REMAIN THE PROPERTY OF THE CITY OF PORTLAND.

CATCH BASIN NOTES

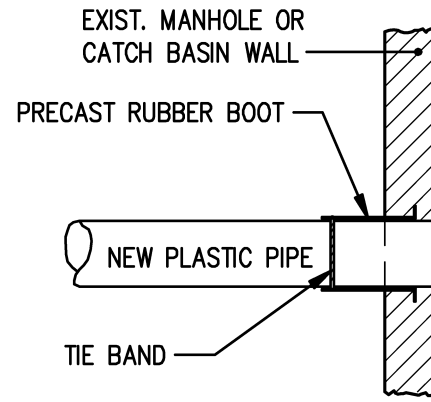
NTS



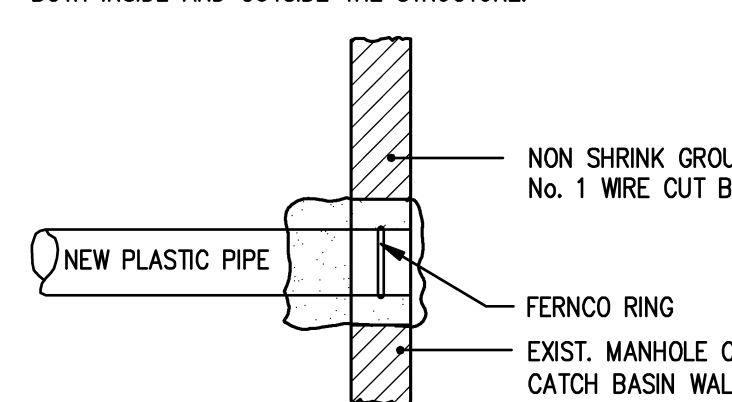
METHOD 1 - EXISTING PIPE INTO NEW STRUCTURE

NOTE: REMOVE WATERPROOFING FROM STRUCTURE BEFORE APPLYING MORTAR. WATERPROOF AGAIN AFTER MORTAR HAS SET.

NOTE: EXISTING MANHOLE OR CATCH BASIN SHALL BE CORE DRILLED FOR PIPE INSTALLATION. IF PIPE DIAMETER IS SO LARGE THAT CORE DRILLING IS PROHIBITED, THE CONTRACTOR MAY USE ANY COMBINATION OF JACK HAMMERING AND SAW CUTTING THE STRUCTURE TO CREATE PIPE OPENING. THE NEW OPENING MUST THEN BE SEALED AND WATERTIGHT BOTH INSIDE AND OUTSIDE THE STRUCTURE.



METHOD 2 - NEW CONSTRUCTION



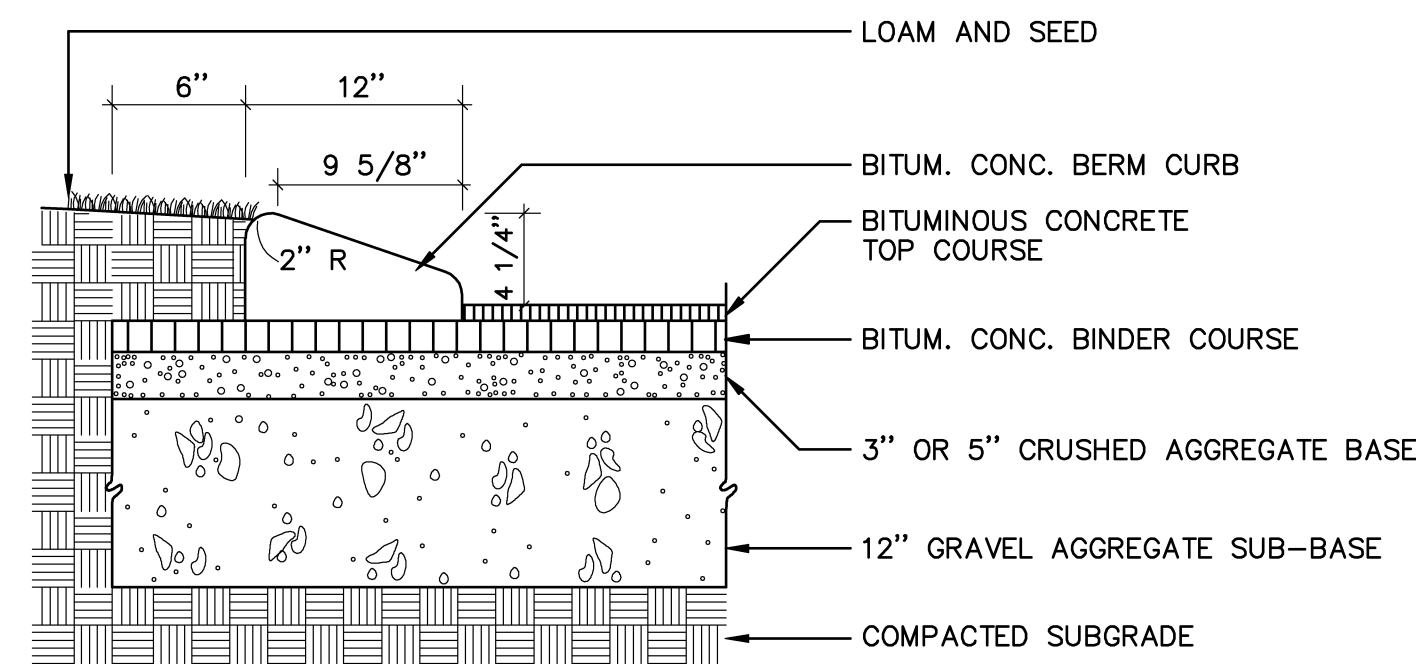
METHOD 3 - NEW PIPE INTO EXISTING STRUCTURE

TYPICAL PIPE TO MANHOLE CONNECTION DETAILS

NTS

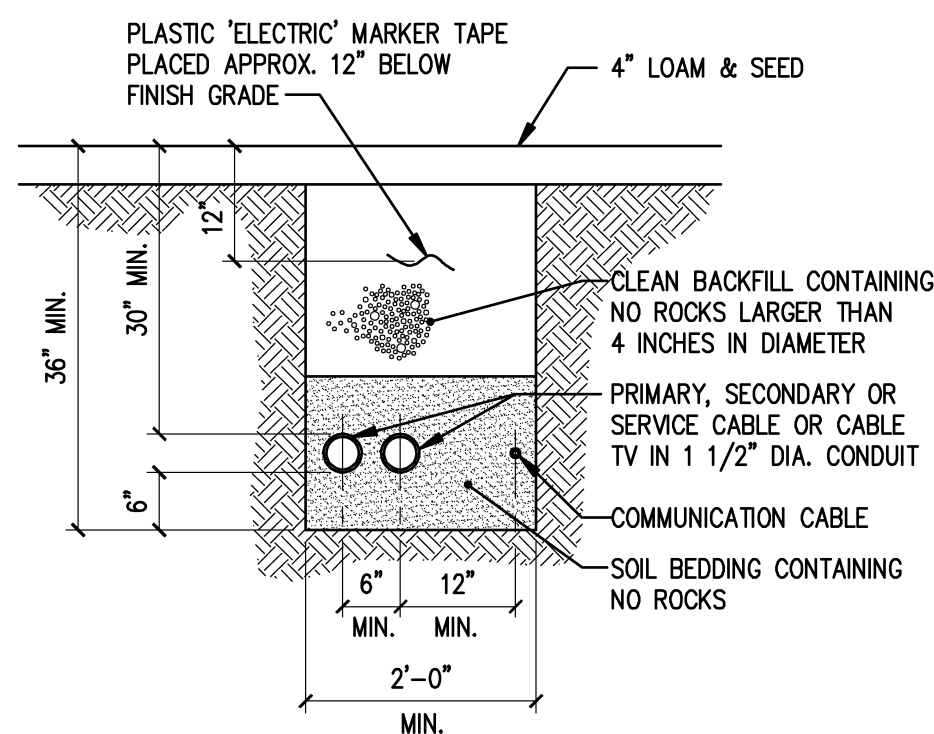
TYPICAL LIGHT BASE DETAIL

NTS



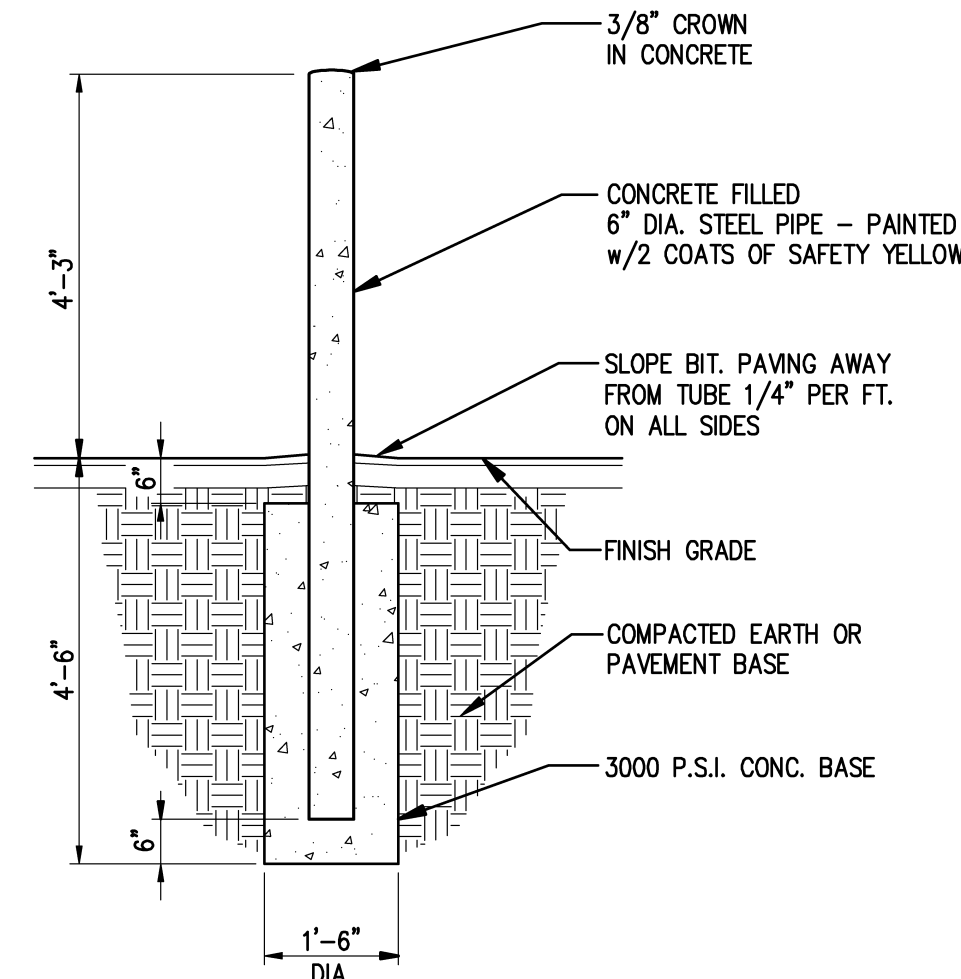
TYPICAL BITUMINOUS CURB DETAIL

NTS



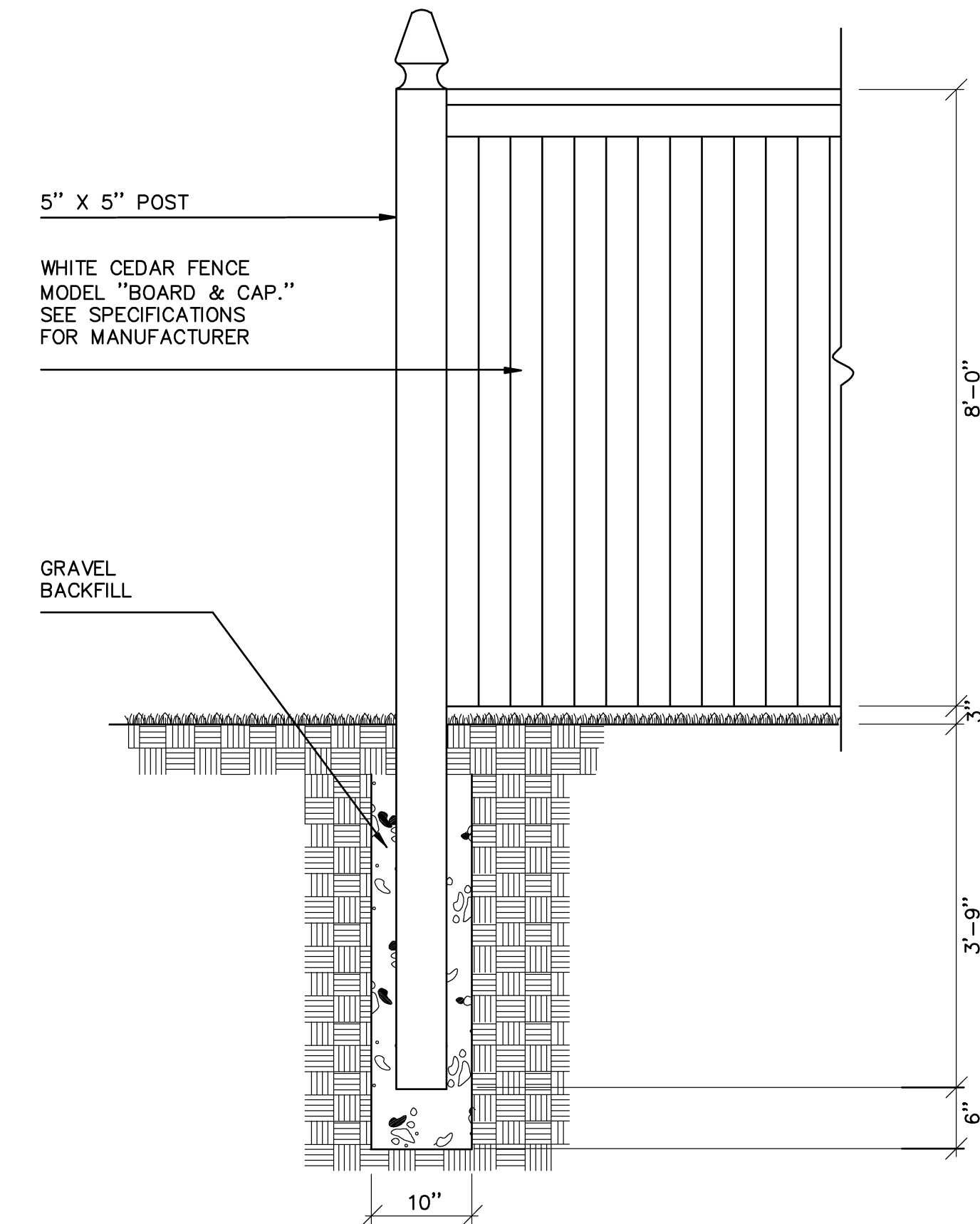
TYPICAL UNDERGROUND WIRE TRENCH DETAIL

NTS



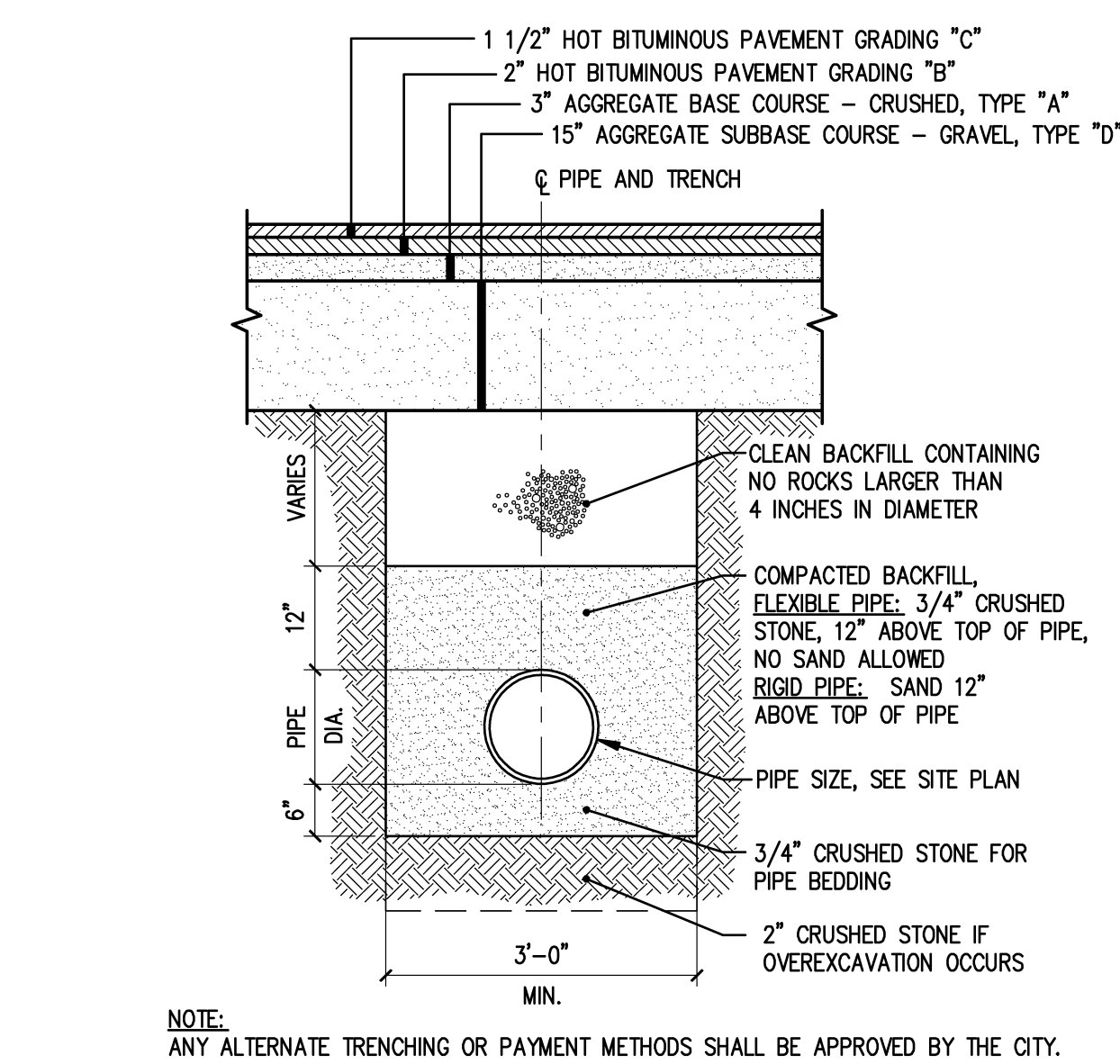
TYPICAL BOLLARD DETAIL

NTS



TYPICAL FENCE DETAIL

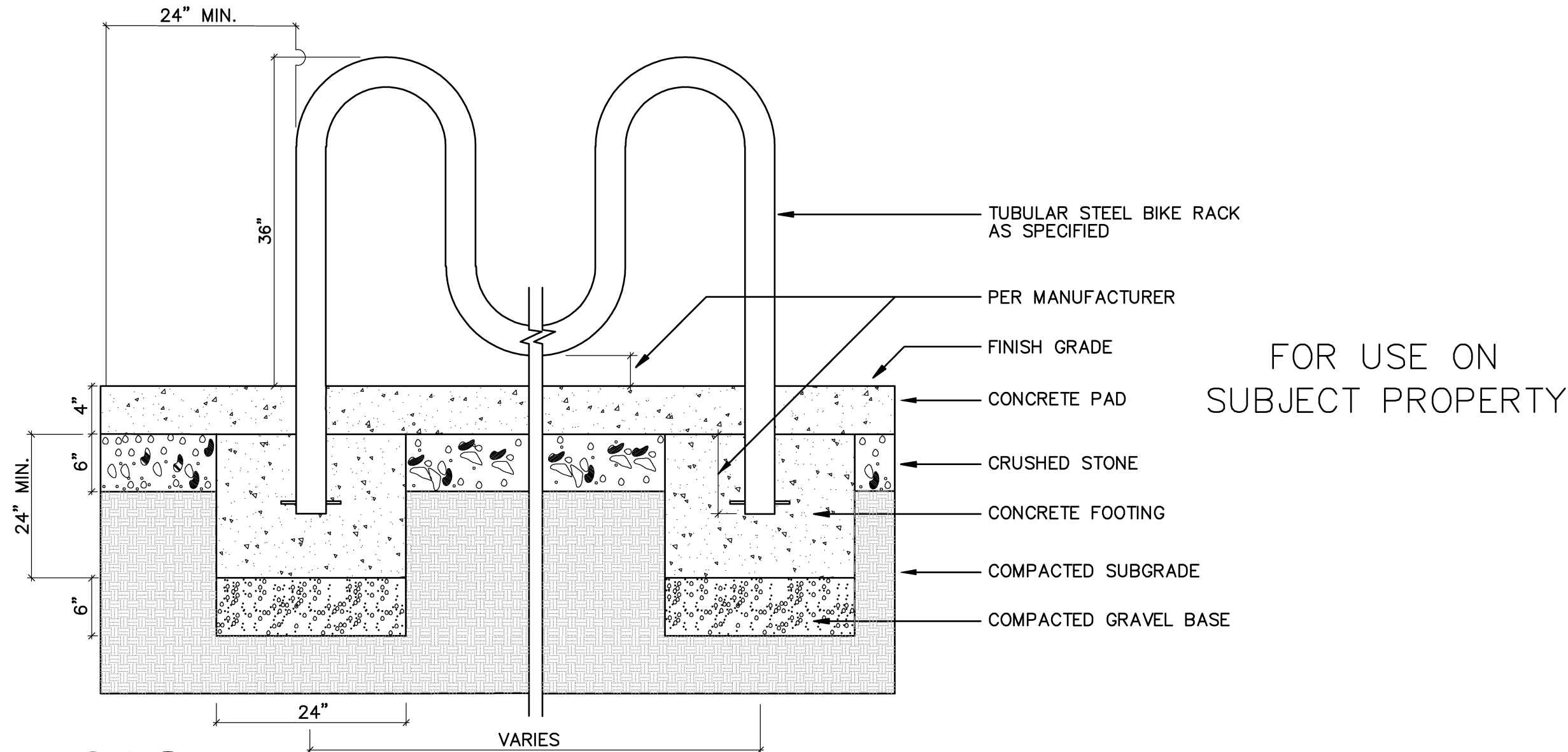
NTS



NOTE: ANY ALTERNATE TRENCHING OR PAYMENT METHODS SHALL BE APPROVED BY THE CITY.

TYPICAL UNDERGROUND PIPE TRENCH SECTION

NTS



BIKE RACK DETAIL - SUBJECT PROPERTY

NTS

CASCO BAY ENGINEERING
 424 Fore Street
 Portland, ME 04101
 Phone 207.842.2800
 Fax 207.842.2828
 www.cascobayengineering.com

Mitchell & Associates
 LANDSCAPE ARCHITECTS
 The Station School, 70 Dexter Street, Portland, Maine 04101
 Phone: 207.754.1277

CWS ARCHITECTS
 CONSULTING, LLC
 100 Commercial Street, Portland, ME 04101
 Phone: 207.754.1277

shinberg
 CONSULTING, LLC

CLIENT:
BAYSIDE MAINE, LLC
 477 CONGRESS STREET
 SUITE 1012
 PORTLAND, ME 04101
 TEL: (207) 772-7070
 CONTACT: GREG SHINBERG

STATE OF MAINE
 STEP 1
 NOT FOR CONSTRUCTION
 PROFESSIONAL ENGINEER
 44835

645 CONGRESS STREET
 PORTLAND
 MAINE
 BUILDING RENOVATION

NO.	DATE	ISSUE
A	2-3-09	PLANNING REVIEW
B	3-17-09	PLANNING REVIEW
C	4-7-09	PLANNING REVIEW
D	4-21-09	PLANNING REVIEW
E	5-4-09	FINAL PLANNING REVIEW
G	5-27-09	ISSUED FOR BIDDING AND PERMITTING
H	6-8-09	ADDENDUM #2

SHEET TITLE:

SITE DETAILS, SHEET 2

DESIGNED: ED
 DRAWN: ED
 DATE: 1-29-09
 CADD FILE: 8104-C1.DWG
 PROJECT NUMBER: 8104

C3.1