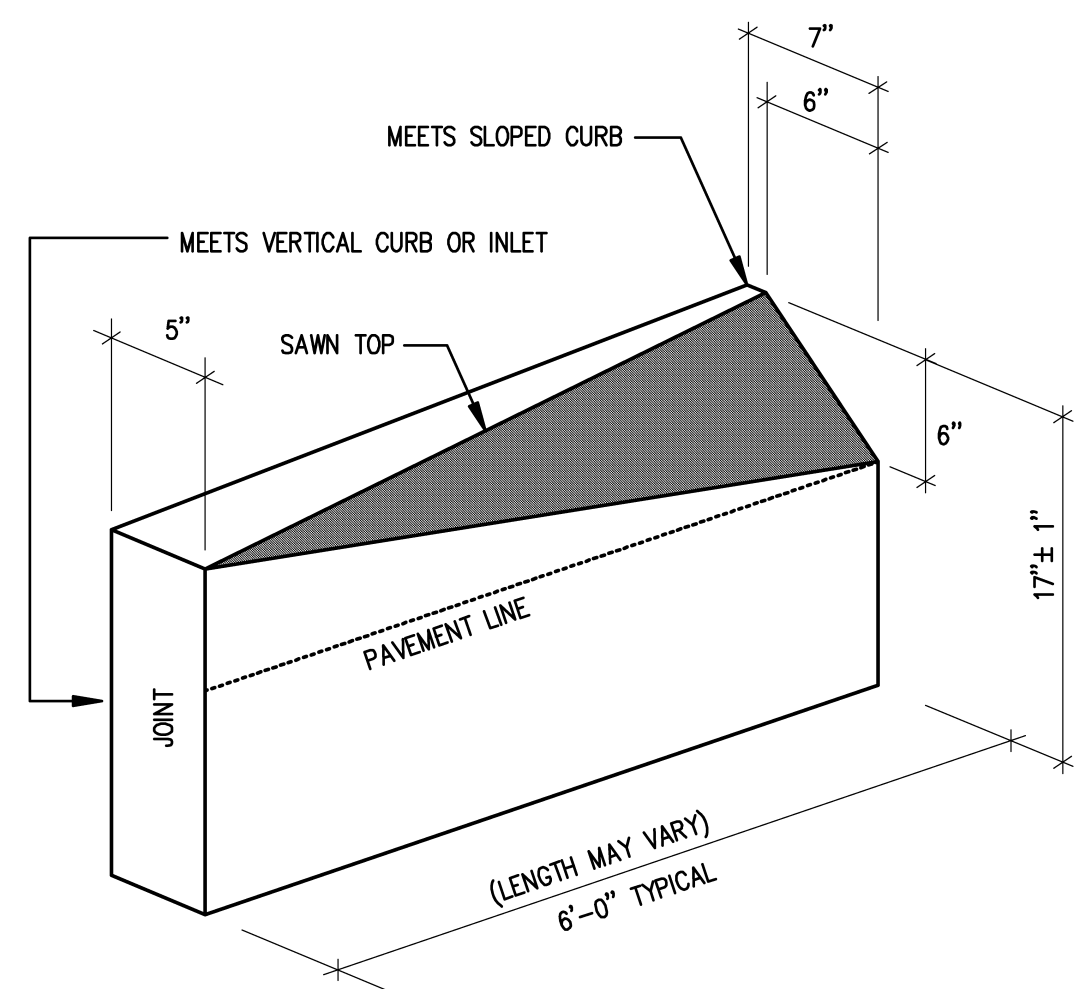
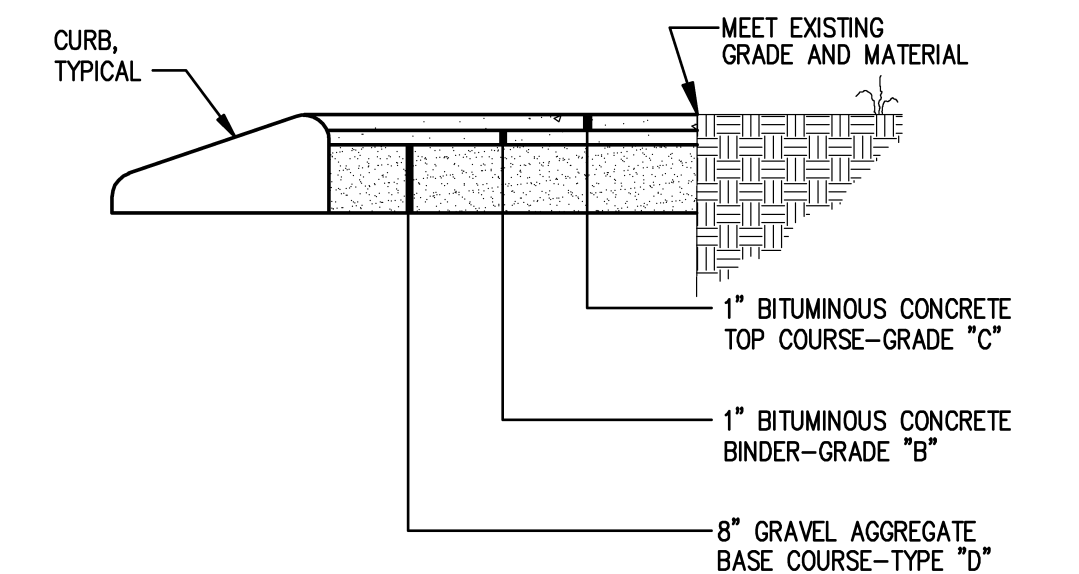


NOTE: JOINTS SHALL BE CAULKED WITH N1 CAULKING IF 3/8" OR GREATER

BRICK SIDEWALK WITH GRANITE CURB DETAIL NTS

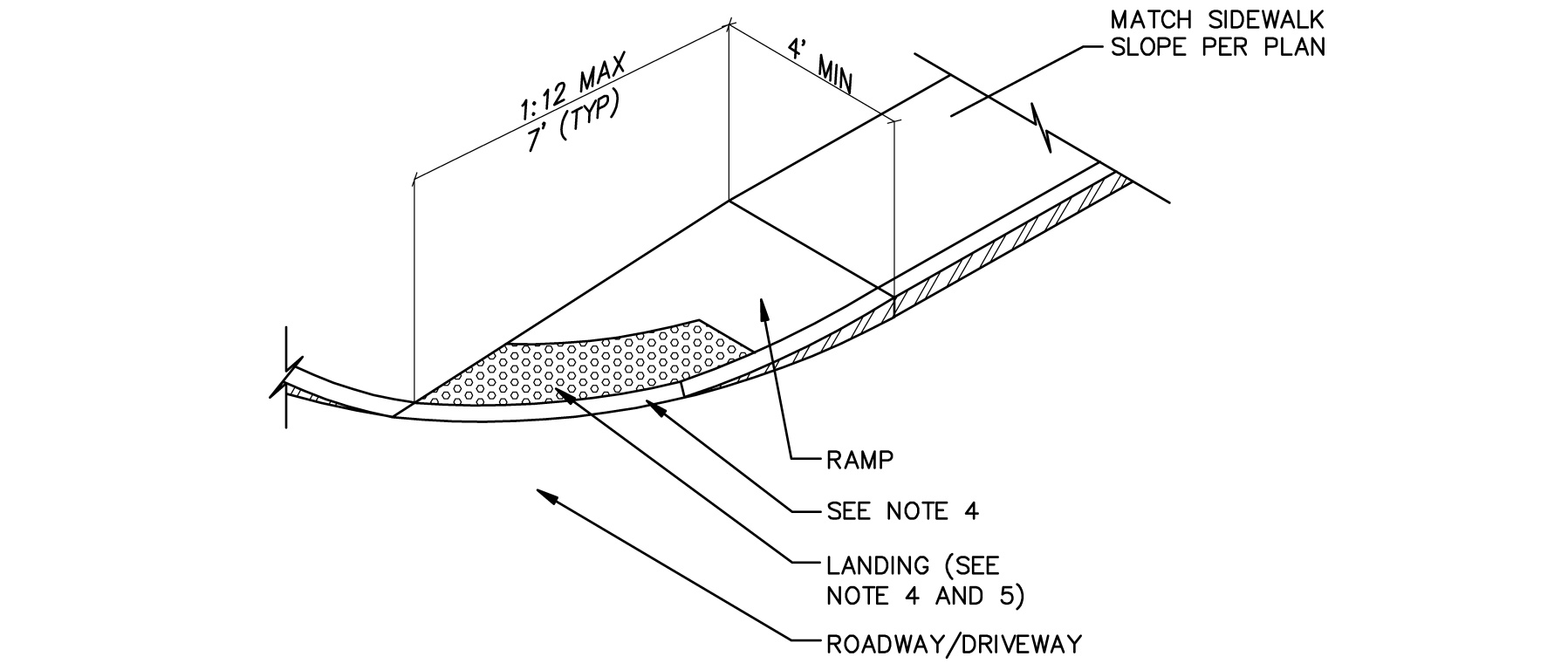


TRANSITIONAL CURB END DETAIL NTS

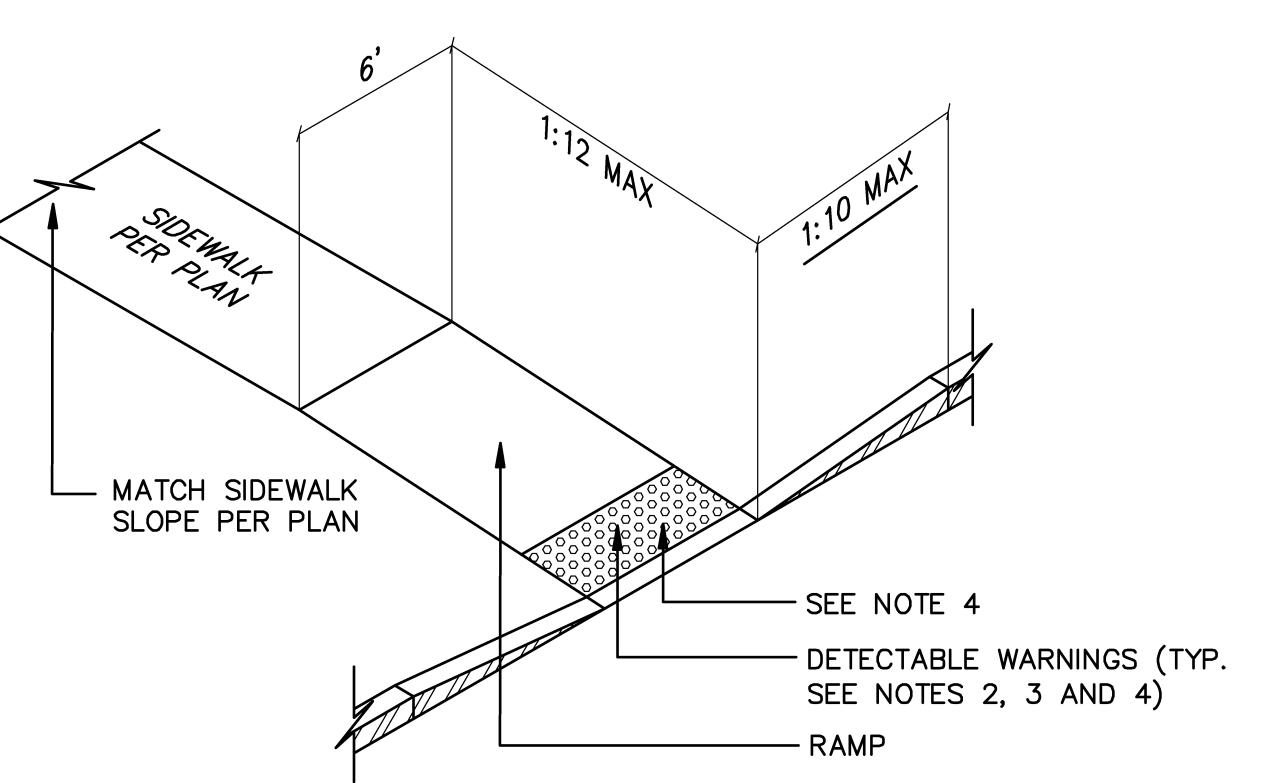
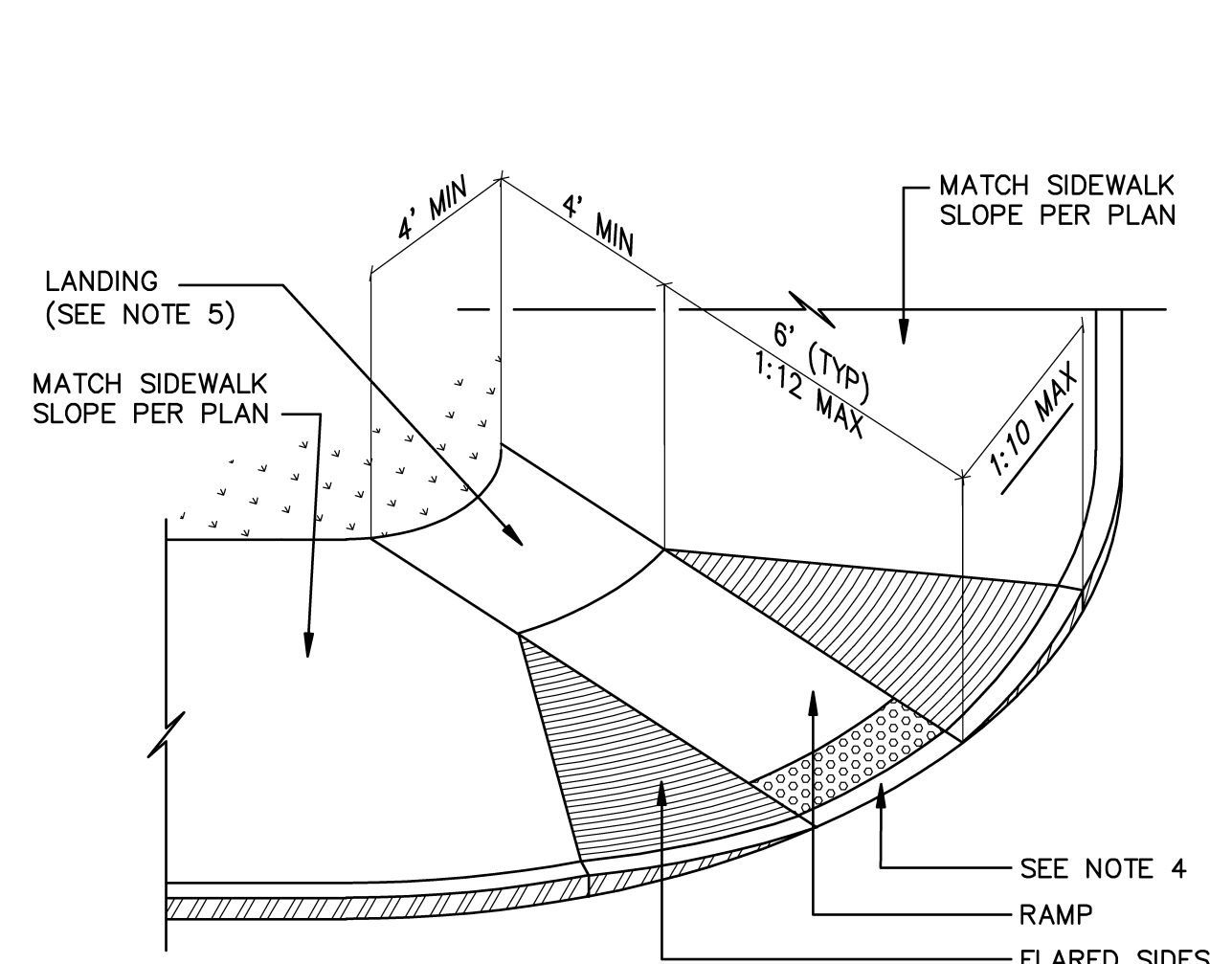


BITUMINOUS WALKWAY DETAIL NTS

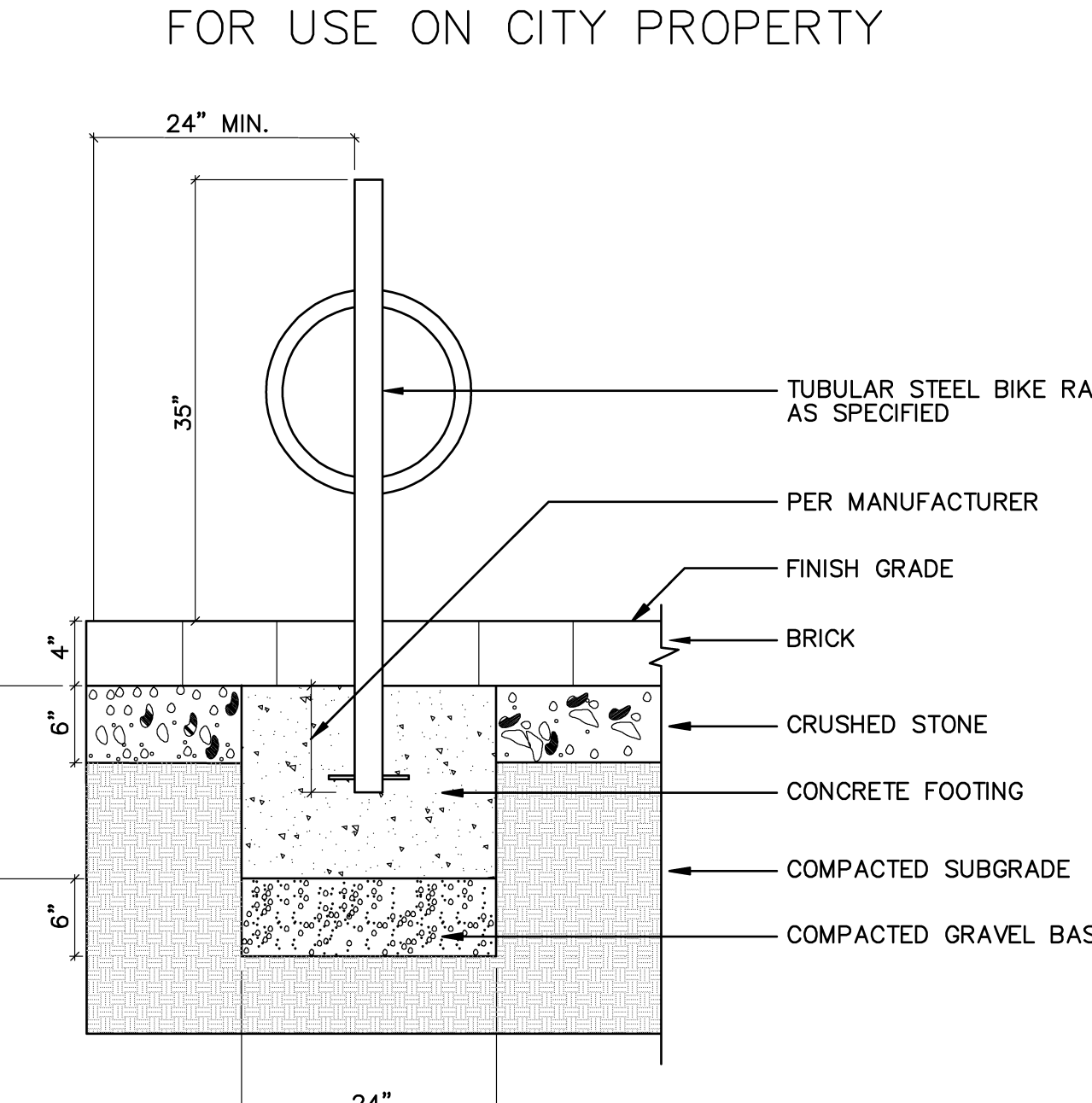
- NOTES:
- CURB RAMP LENGTHS ARE BASED ON SIX (6) INCH CURB REVEAL HEIGHT AND NO RUNNING SLOPE. RAMP LENGTHS SHALL BE ADJUSTED AS NECESSARY TO ACCOMMODATE VARYING CURB REVEAL HEIGHTS AND TO MATCH RUNNING SLOPES OF ADJACENT ROADWAY AND SIDEWALK SLOPES TO MAINTAIN A RAMP THAT DOES NOT EXCEED THE MAXIMUM RAMP SLOPE OF 1:12.
 - DETECTABLE WARNINGS SHALL CONSIST OF RAISED TRUNCATED DOMES AND SHALL HAVE A BASE DIAMETER OF 0.9 INCHES (23 mm) MINIMUM AND 1.4 INCHES (36 mm) MAXIMUM; A TOP DIAMETER OF 50 PERCENT OF THE BASE DIAMETER MINIMUM TO 65 PERCENT OF THE BASE DIAMETER MAXIMUM AND A HEIGHT OF 0.2 INCHES (5.1 mm). A CENTER-TO-CENTER SPACING OF 1.6 INCHES (41mm) MINIMUM AND 2.4 INCHES (61mm) MAXIMUM; AND A BASE-TO-BASE SPACING OF 0.65 INCHES (17mm) MINIMUM, MEASURED BETWEEN THE MOST ADJACENT DOMES ON A SQUARE GRID.
 - DETECTABLE WARNINGS SHALL CONTRAST VISUALLY WITH ADJOINING SURFACES, EITHER LIGHT-ON-DARK, OR DARK-ON-LIGHT. THE MATERIAL USED TO PROVIDE CONTRAST SHALL BE AN INTEGRAL PART OF THE WALKING SURFACE. DETECTABLE WARNINGS USED ON INTERIOR SURFACES SHALL DIFFER FROM ADJOINING WALKING SURFACES IN RESILIENCY OR SOUND-ON-CANE CONTACT.
 - ALL ACCESSIBLE ROUTE SIDEWALKS INTERSECTING ROADWAYS, DRIVEWAYS, OR OTHER VEHICULAR CROSSINGS REQUIRE DETECTABLE WARNINGS. DETECTABLE WARNING ZONES SHALL BE INSTALLED SIX (6) INCHES (OR THE HORIZONTAL THICKNESS OF THE ADJACENT CURB) FROM THE FLOW LINE OF THE CURB, EXTEND INTO THE SIDEWALK FOR A 24" DEPTH, AND COVER THE COMPLETE WIDTH OF THE SIDEWALK OR RAMP AREA. DETECTABLE WARNING ZONES SHALL CONFORM TO THE SLOPE REQUIREMENTS OF THE RAMP, LANDING, OR ACCESSIBLE ROUTE AS DEFINED IN THE SPECIFIED DETAIL. DETECTABLE WARNINGS SHALL NOT BE INSTALLED IN FLARED SIDES, IF THE RAMP INCLUDES FLARED SIDES.
 - ALL LANDING AREAS SHALL BE 4 FEET WIDE BY 4 FEET LONG (MINIMUM DIMENSIONS). THE SLOPE OF THE LANDING AREA SHALL NOT EXCEED A 1:48 IN ANY DIRECTION.
 - ALL ACCESSIBLE ROUTE SLOPES ADJOINING THE LANDING AREA, EXCLUDING THE CURB RAMP, SHALL NOT EXCEED A SLOPE OF 1:20 UNLESS OTHERWISE NOTED.



HANDICAP RAMP DETAIL NTS

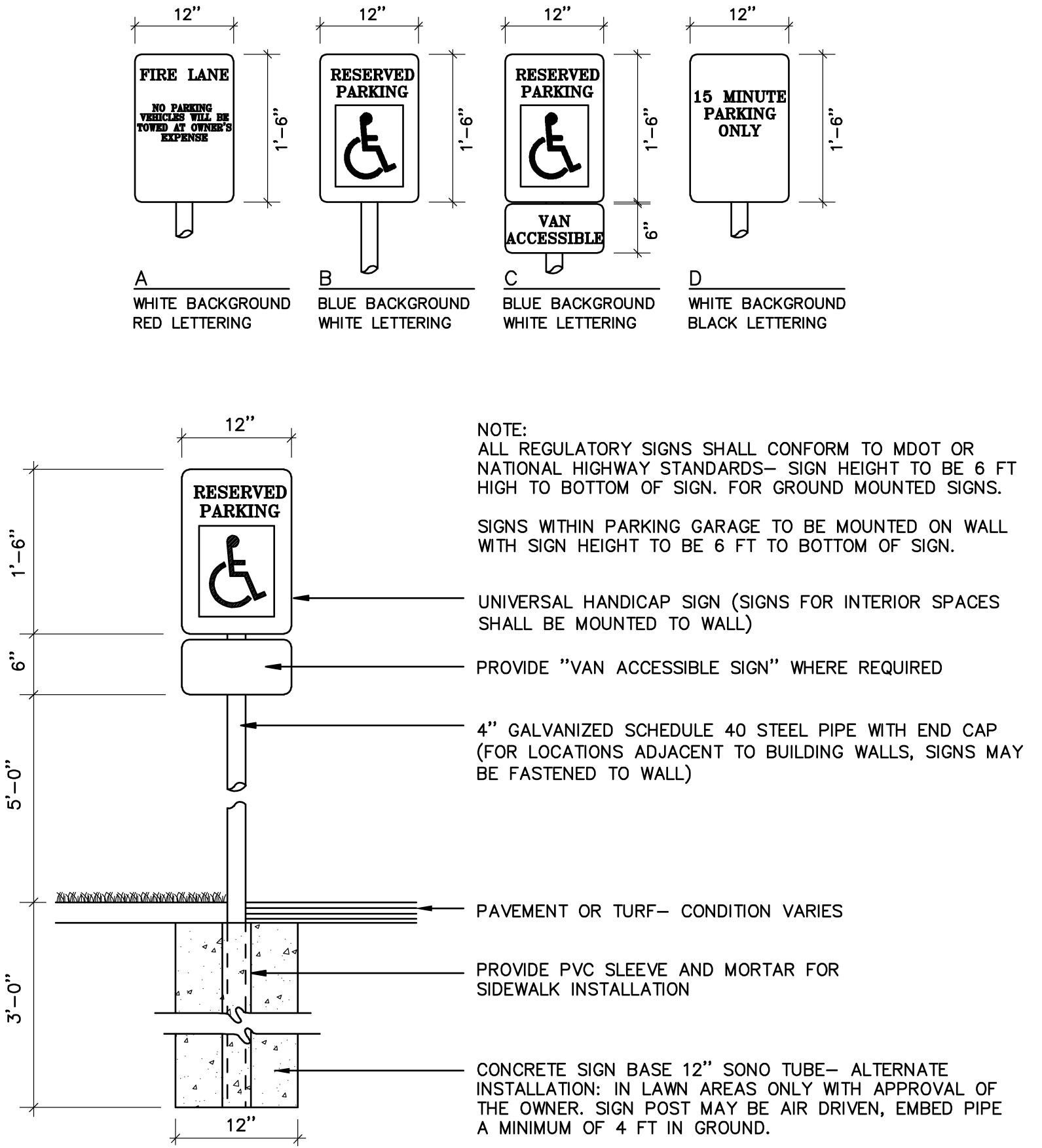


PAINTED MARKINGS DETAIL NTS

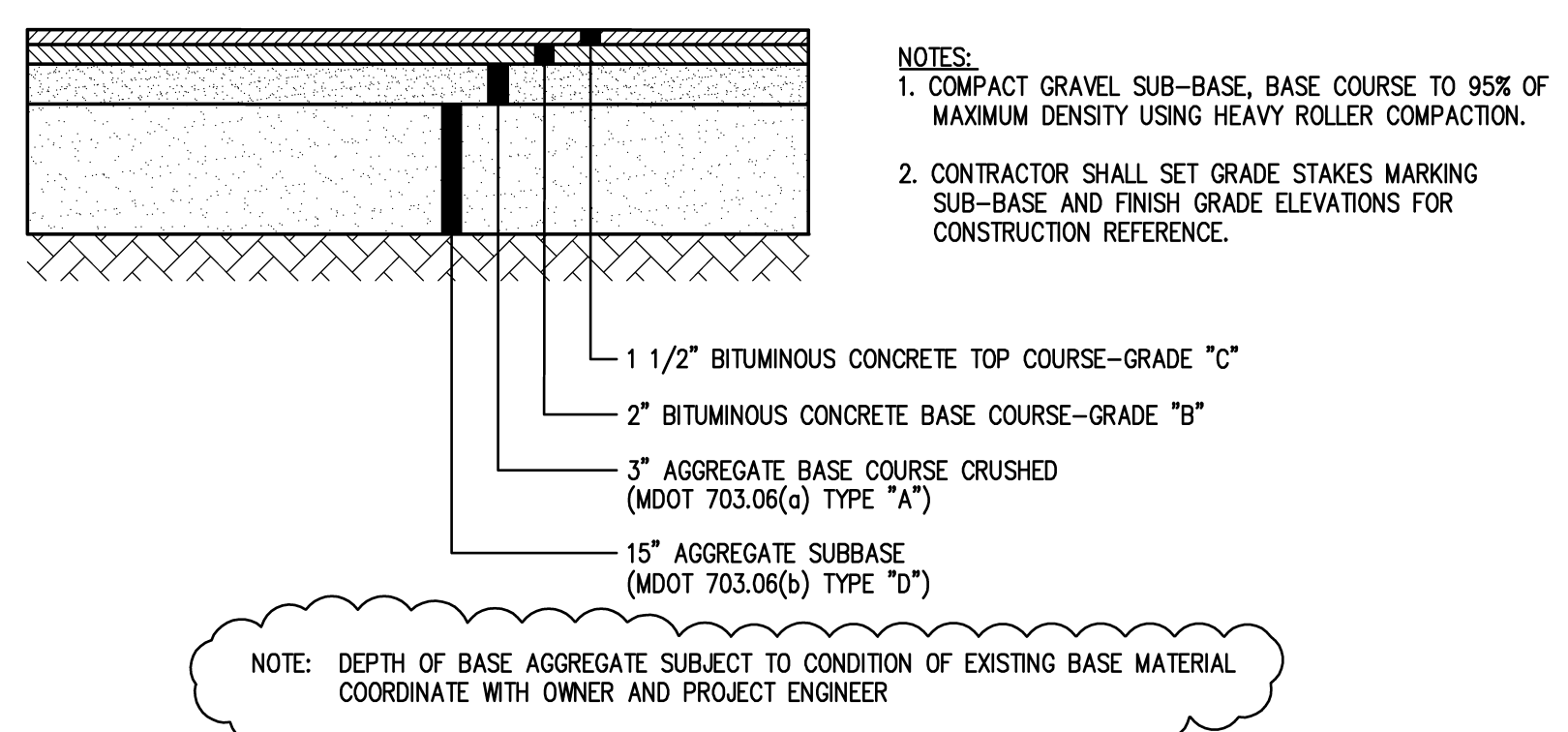


NOTE: BIKE RACKS ON CONGRESS STREET SHALL BE "RAL 6012 TIGER DRYLAC USA, INC. - GREEN" BIKE RACKS ON SITE SHALL BE DARK BRONZE TO MATCH PARKING LIGHT POLES.

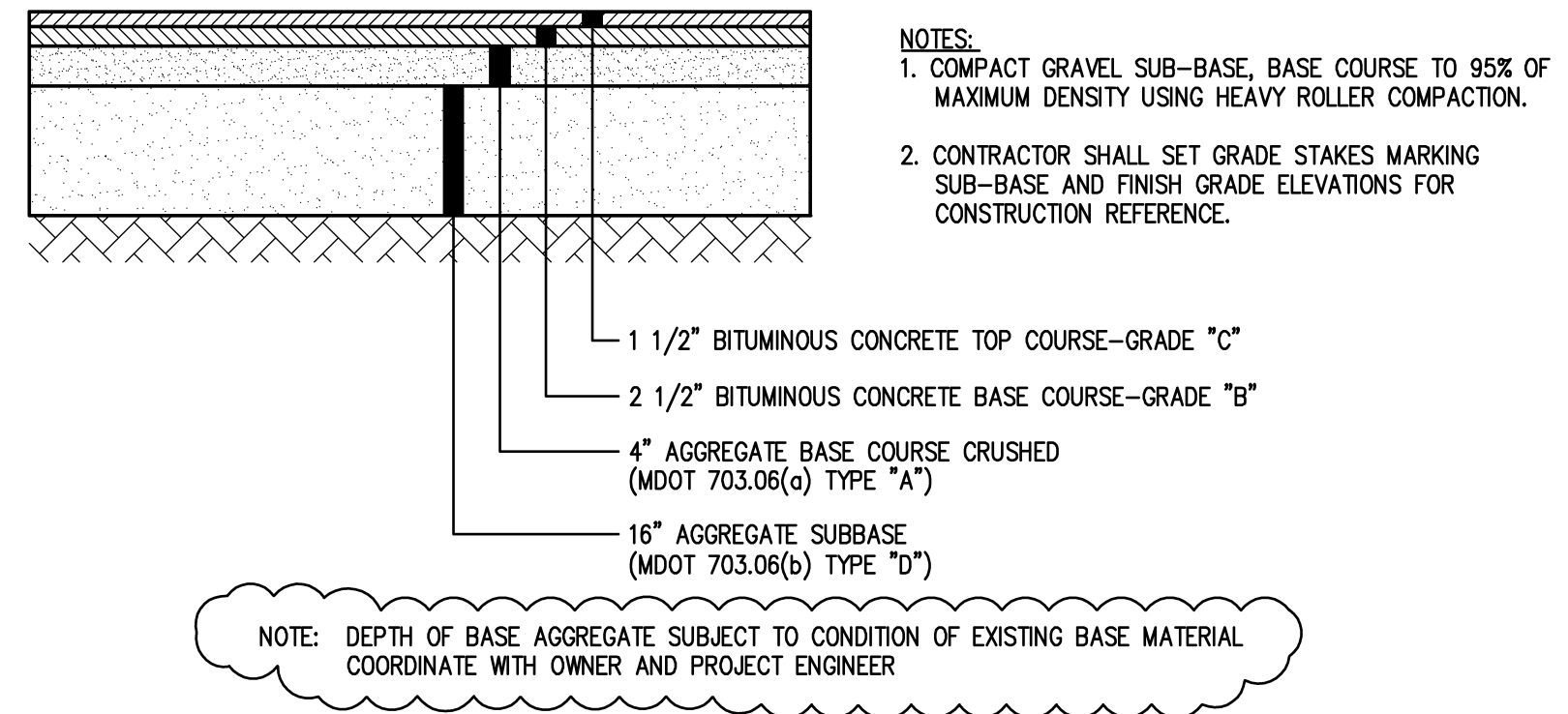
BIKE RACK DETAIL - CITY PROPERTY NTS



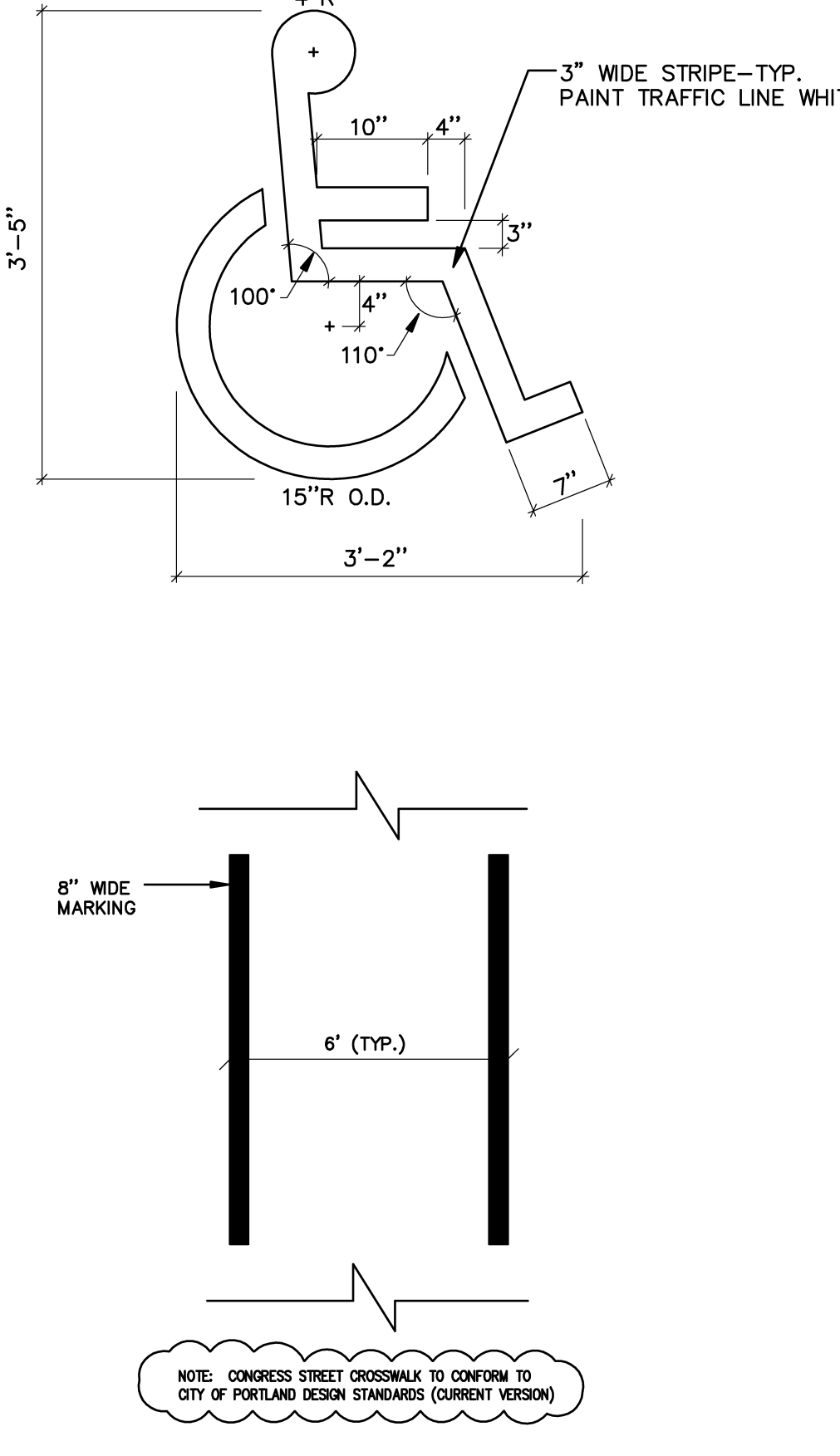
TYP. SIGNAGE DETAIL NTS



TYP. PAVED PARKING LOT SECTION NTS



TYP. HEAVY DUTY BITUMINOUS PAVEMENT SECTION NTS



PAINTED MARKINGS DETAIL NTS

CASCO BAY ENGINEERING
 424 Fore Street
 Portland, ME 04101
 Phone 207.842.2800
 Fax 207.842.2828
 www.cascobayengineering.com

Mitchell & Associates
 LANDSCAPE ARCHITECTS
 The Granite School, 75 Center Street Portland, Maine 04101
 Phone: 207.754.1427 Fax: 207.754.5145

CWS ARCHITECTS
 100 Commercial Street
 Portland, Maine 04101
 Phone: 207.754.1427 Fax: 207.754.5145

shinberg CONSULTING, LLC

CLIENT:
BAYSIDE MAINE, LLC
 477 CONGRESS STREET
 SUITE 1012
 PORTLAND, ME 04101
 TEL: (207) 772-7070
 CONTACT: GREG SHINBERG

STATE OF MAINE
 REGISTERED PROFESSIONAL ENGINEER
 No. 4835
 NOT FOR CONSTRUCTION

645 CONGRESS STREET
 PORTLAND MAINE
 BUILDING RENOVATION

REVISIONS	ISSUE	DATE
A	PLANNING REVIEW	2-3-09
B	PLANNING REVIEW	3-17-09
C	PLANNING REVIEW	4-7-09
D	PLANNING REVIEW	4-21-09
E	FINAL PLANNING REVIEW	5-4-09
F	ISSUED FOR BIDDING AND PERMITTING	5-27-09
G	ADDENDUM #2	6-8-09

SHEET TITLE:
SITE DETAILS, SHEET 1
 DESIGNED: ED
 DRAWN: ED
 DATE: 1-29-09
 CADD FILE: 8104-C1.DWG
 PROJECT NUMBER: 8104