

**G2 ENLARGED STAIR PLAN**  
REFERENCED FROM: SCALE: 1/4" = 1'-0"

**FIRE SUPPRESSION:**  
EXISTING FIRE SUPPRESSION SPRINKLER SYSTEM LAYOUT TO BE RECONFIGURED TO ACCOMMODATE NEW SPACE LAYOUT AS REQUIRED. SPRINKLER SYSTEM ENGINEER DESIGN DRAWINGS WILL BE SUBMITTED TO STATE FIRE MARSHALL FOR APPROVAL.

**FIRE ALARM AND EMERGENCY LIGHTING SYSTEM:**  
EXISTING SYSTEM TO REMAIN IN PLACE OR TO BE EXPANDED AS NOTED.

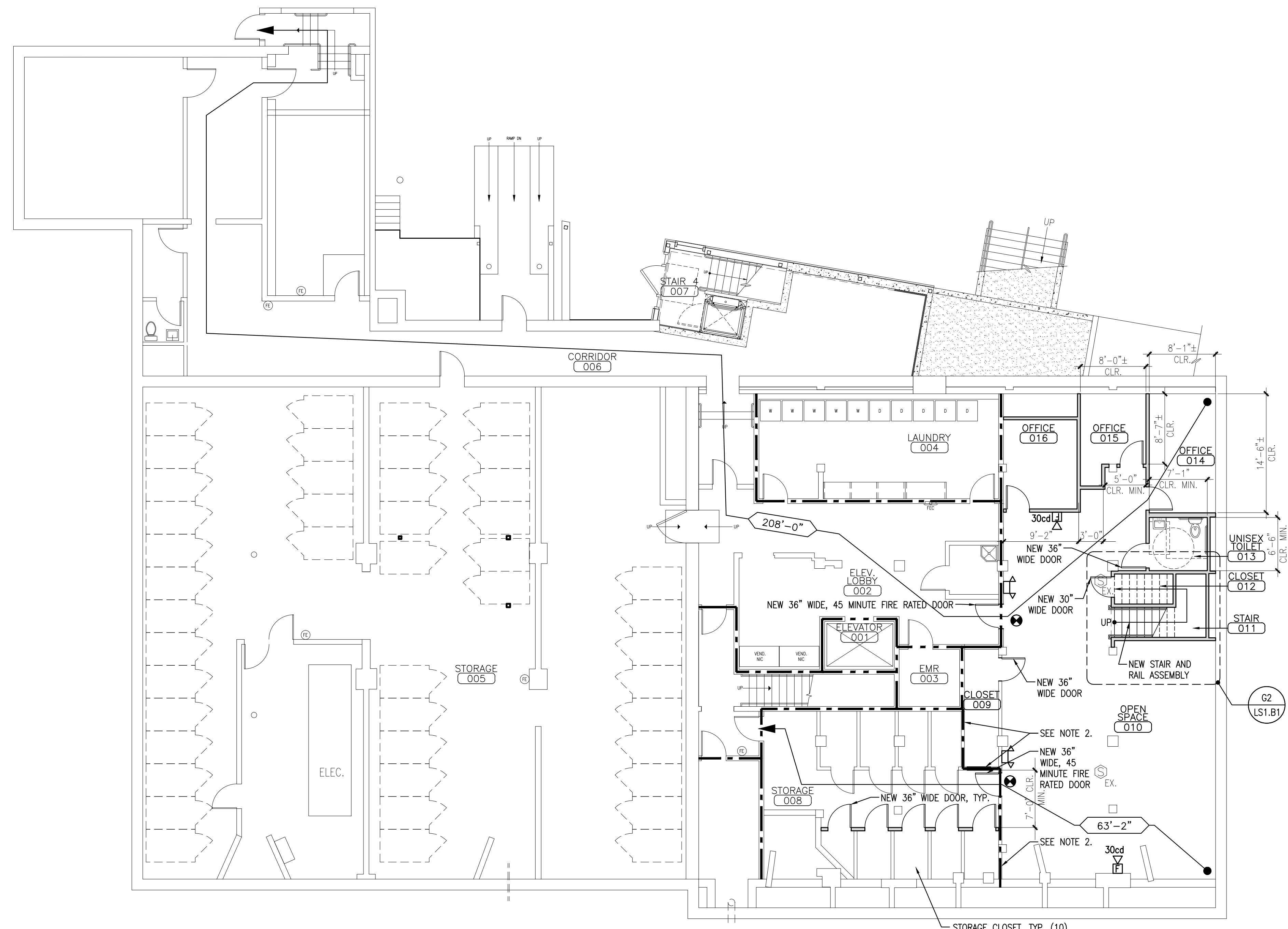
**TRAVEL DISTANCES:**  
● X'-XX" → EXIT ACCESS TRAVEL DISTANCE

**LINE TYPE KEY:**  
 - - - - - 1 HR FIRE RATED WALL ASSEMBLY - EXISTING, UNLESS NOTED OTHERWISE  
 - · - · - 2 HR FIRE RATED WALL ASSEMBLY - EXISTING, UNLESS NOTED OTHERWISE  
 ——— NEW WALL ASSEMBLY

**SYMBOLS LEGEND:**  
 (E) EXISTING FIRE EXTINGUISHER  
 (FEC) EXISTING SEMI-RECESSED FIRE EXTINGUISHER CABINET AND FIRE EXTINGUISHER  
 (SD) EXISTING SMOKE DETECTOR  
 (EX) EX.  
 (NEW EXIT SIGN) NEW EXIT SIGN - ARROW DENOTES EXIT SIGN TO BE PROVIDED WITH DIRECTIONAL ARROW  
 (NEW HORN/STROBE) NEW HORN/STROBE DEVICE  
 (NEW BATTERY OPERATED EMERGENCY LIGHT) NEW BATTERY OPERATED EMERGENCY LIGHT

**GENERAL NOTES:**  
 1. ALL NEW DOORS TO BE 34" WIDE UNLESS NOTED OTHERWISE.  
 2. EXTEND WALL ASSEMBLY TO UNDERSIDE OF FLOOR DECK/STRUCTURE ABOVE AS REQUIRED TO CREATE A 1 HOUR FIRE RATED WALL ASSEMBLY SIMILAR TO U.L. DESIGN NO. U309. INFILL, PATCH AND REPAIR UTILIZING 5/8" TYPE "X" GWB AS REQUIRED TO COMPLETE ASSEMBLY. FIRE SEAL TOP AND BOTTOM OF WALL AND FIRE STOP ALL THROUGH WALL PENETRATIONS AS REQUIRED UTILIZING APPLICABLE U.L. APPROVED DESIGN DETAILING SPECIFIC TO EACH CONDITION.

**G4 LIFE SAFETY PLAN NOTES AND LEGEND**  
REFERENCED FROM: SCALE: N/A



**A5 BASEMENT LIFE SAFETY FLOOR PLAN**  
REFERENCED FROM: SCALE: 1/8" = 1'-0"

OWNER / DEVELOPER  
**BAYSIDE MAINE, LLC**  
477 CONGRESS STREET  
PORTLAND, ME 04101

PROJECT TITLE  
**BASEMENT AND FIRST FLOOR FIT-UP FOR MOMENTUM MENTAL HEALTH**  
643 CONGRESS STREET  
PORTLAND, ME

DRAWING TITLE  
**BASEMENT LIFE SAFETY FLOOR PLAN, NOTES AND LEGEND**  
CWS PROJ. NO.: 14015

DATE	REVISION DESCRIPTION

PROJECT NORTH DRAWING NUMBER

**LS1.B1**

SCALE: AS NOTED  
DATE: 04/24/2014

ISSUED FOR PERMIT