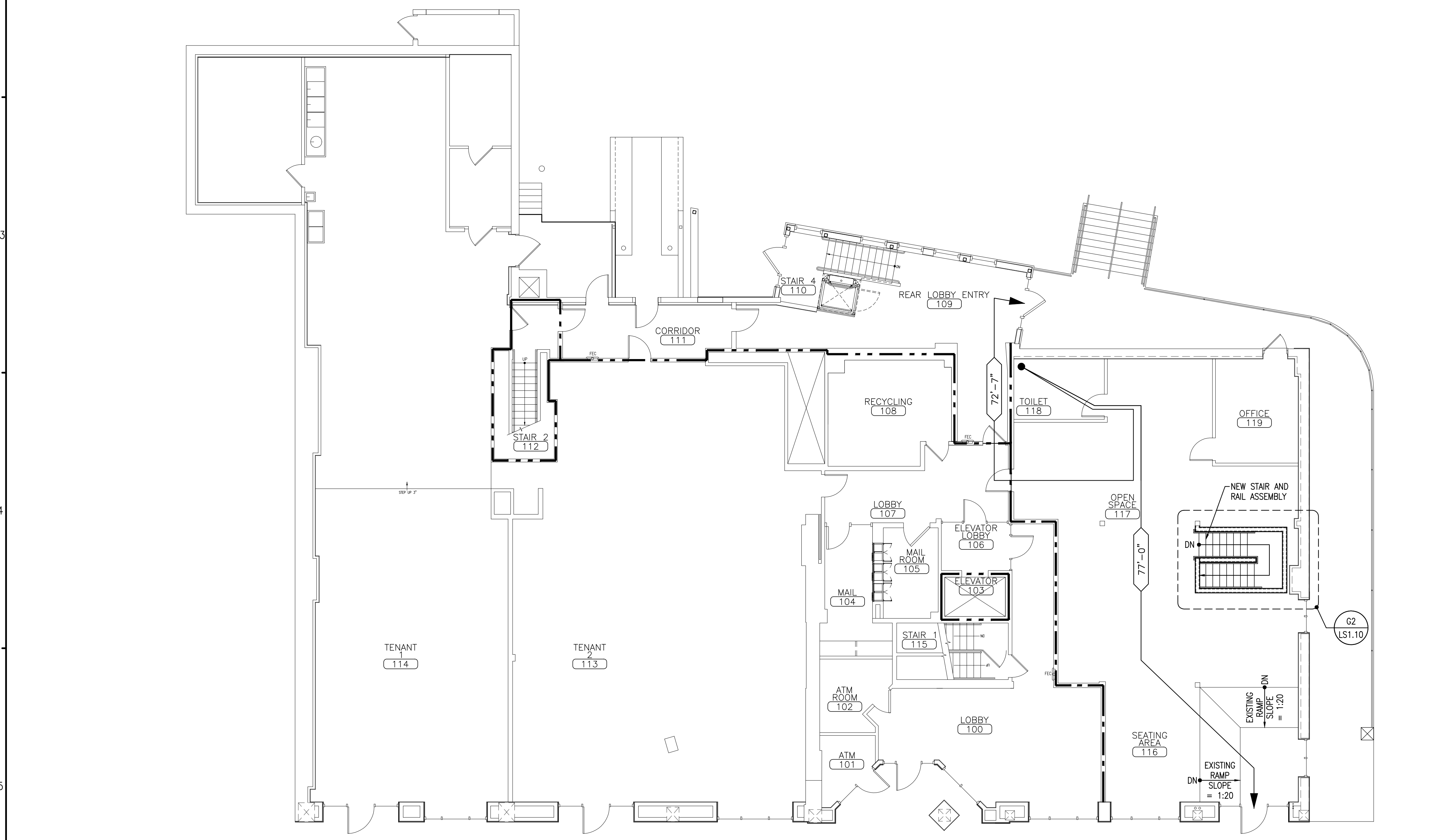


A2 NOT USED
REFERENCED FROM: SCALE:

C2 TYPICAL HANDRAIL/GUARDRAIL DETAIL
REFERENCED FROM: E2/LS1.10 SCALE: 3/4" = 1'-0"

E2 TYPICAL STAIR SECTION DETAIL
REFERENCED FROM: G2/LS1.10 SCALE: 3/4" = 1'-0"

G2 ENLARGED STAIR PLAN
REFERENCED FROM: A5/LS1.10 SCALE: 1/4" = 1'-0"



FIRE SUPPRESSION:
EXISTING FIRE SUPPRESSION SPRINKLER SYSTEM LAYOUT TO BE RECONFIGURED TO ACCOMMODATE NEW SPACE LAYOUT AS REQUIRED. SPRINKLER SYSTEM ENGINEER DESIGN DRAWINGS WILL BE SUBMITTED TO STATE FIRE MARSHALL FOR APPROVAL.

FIRE ALARM AND EMERGENCY LIGHTING SYSTEM:
EXISTING SYSTEM TO REMAIN IN PLACE OR TO BE EXPANDED AS NOTED.

TRAVEL DISTANCES:
● X'-XX" → EXIT ACCESS TRAVEL DISTANCE

LINE TYPE KEY:
 - - - - - 1 HR FIRE RATED WALL ASSEMBLY - EXISTING, UNLESS NOTED OTHERWISE
 - · - · - 2 HR FIRE RATED WALL ASSEMBLY - EXISTING, UNLESS NOTED OTHERWISE
 _____ NEW WALL ASSEMBLY

SYMBOLS LEGEND:
 FE EXISTING FIRE EXTINGUISHER
 FEC EXISTING SEMI-RECESSED FIRE EXTINGUISHER CABINET AND FIRE EXTINGUISHER
 EX EXISTING SMOKE DETECTOR
 NEW EXIT SIGN - ARROW DENOTES EXIT SIGN TO BE PROVIDED WITH DIRECTIONAL ARROW
 NEW HORN/STROBE DEVICE
 NEW BATTERY OPERATED EMERGENCY LIGHT

GENERAL NOTES:
 1. ALL NEW DOORS TO BE 34" WIDE UNLESS NOTED OTHERWISE.
 2. EXTEND WALL ASSEMBLY TO UNDERSIDE OF FLOOR DECK/STRUCTURE ABOVE AS REQUIRED TO CREATE A 1 HOUR FIRE RATED WALL ASSEMBLY SIMILAR TO U.L. DESIGN NO. U309. INFILL, PATCH AND REPAIR UTILIZING 5/8" TYPE "X" GWB AS REQUIRED TO COMPLETE ASSEMBLY. FIRE SEAL TOP AND BOTTOM OF WALL AND FIRE STOP ALL THROUGH WALL PENETRATIONS AS REQUIRED UTILIZING APPLICABLE U.L. APPROVED DESIGN DETAILING SPECIFIC TO EACH CONDITION.

G4 LIFE SAFETY PLAN NOTES AND LEGEND
REFERENCED FROM: SCALE: N/A

A5 FIRST FLOOR LIFE SAFETY PLAN
REFERENCED FROM: SCALE: 1/8" = 1'-0"

OWNER / DEVELOPER
BAYSIDE MAINE, LLC
477 CONGRESS STREET
PORTLAND, ME 04101

PROJECT TITLE
BASEMENT AND FIRST FLOOR FIT-UP FOR MOMENTUM MENTAL HEALTH
643 CONGRESS STREET
PORTLAND, ME

DRAWING TITLE
FIRST FLOOR LIFE SAFETY PLAN, STAIR DETAILS, NOTES AND LEGEND
CWS PROJ. NO.: 14015

DATE	REVISION DESCRIPTION

PROJECT NORTH

DRAWING NUMBER
LS1.10

SCALE: AS NOTED
DATE: 04/24/2014