

# Summary of Planning Workshop Spring 2009



UNIVERSITY OF  
SOUTHERN MAINE

**EAST BAYSIDE**  
NEIGHBORHOOD ORGANIZATION



# EAST BAYSIDE

## NEIGHBORHOOD ORGANIZATION



*~EBNO-Incorporated May 2007~*

- Create & maintain a safe neighborhood
- Take advantage of funding opportunities for neighborhood revitalization
- Help low income elderly & disadvantaged members of the community to thrive
- Improve quality of life for all residents
- Ensure adequate representation in all city matters
- Create sense of community within the neighborhood while preserving and respecting the cultural and socioeconomic diversity of its population

# Planning Workshop at the Muskie School...

# Research Techniques

To gather info about East Bayside we:

## *Corresponded with great resources*

*EBNO, PHA, Councilor Donoghue, Franklin Arterial Study Group, Root Cellar, PHS...*

## *Attended meetings*

*EBNO, Bayside trail, Open Space Design Committee, Franklin Street Reclamation Authority, Tenant Council, Franklin Arterial Study Group*

## *Conducted surveys with business owners*

## *Used Portland Tax Assessors data to outline land use*

## *Compiled background research*

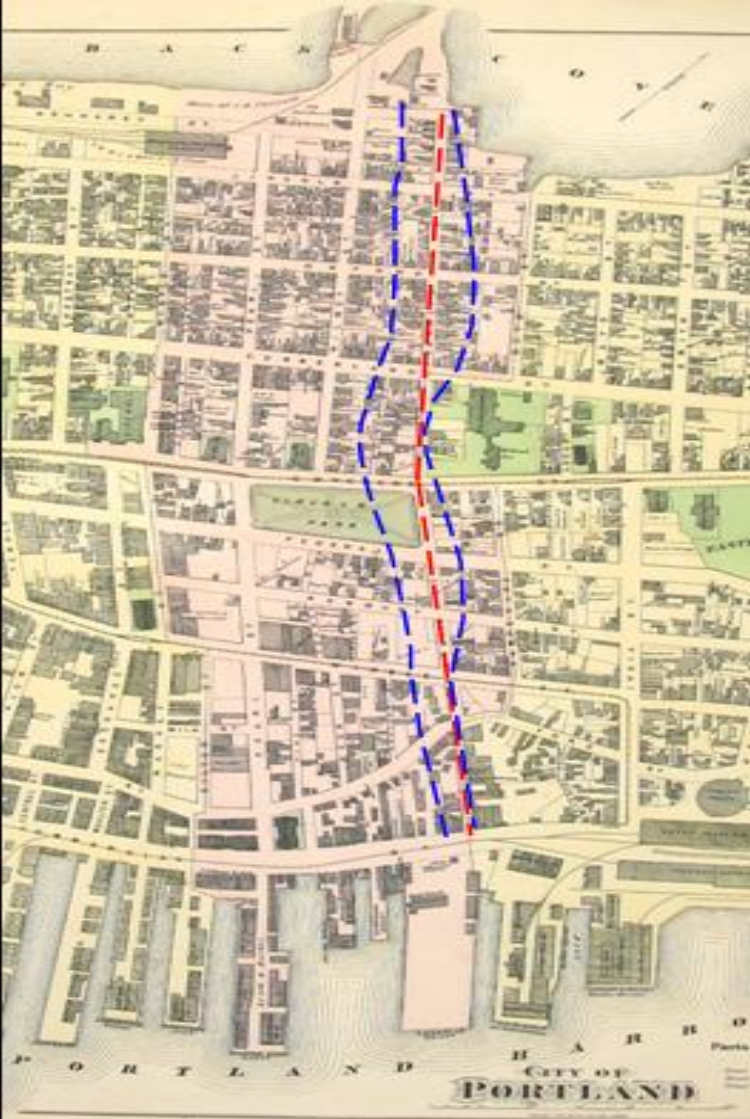
*zoning, relevant areas of Portland's comprehensive plan, census data, major institutions in the area, social services and artistic endeavors, old maps, and old photos of Franklin Street and Congress Street*

# Ingredients for a good neighborhood: East Bayside is Well Stocked!

- Diversity
- Green Space
- Good use of old buildings
- Concentration – urban density
- Variety of routes and transportation
- Small blocks and Interconnected Streets

East Bayside before Franklin Art

East Bayside after Franklin Art



# PORTLAND MAINE



# YOUR NEIGHBORHOOD

Commercial District

Residential District

Lower Bayside District

Franklin Arterial

Bayside Trail

Parks

5-Minute Walk





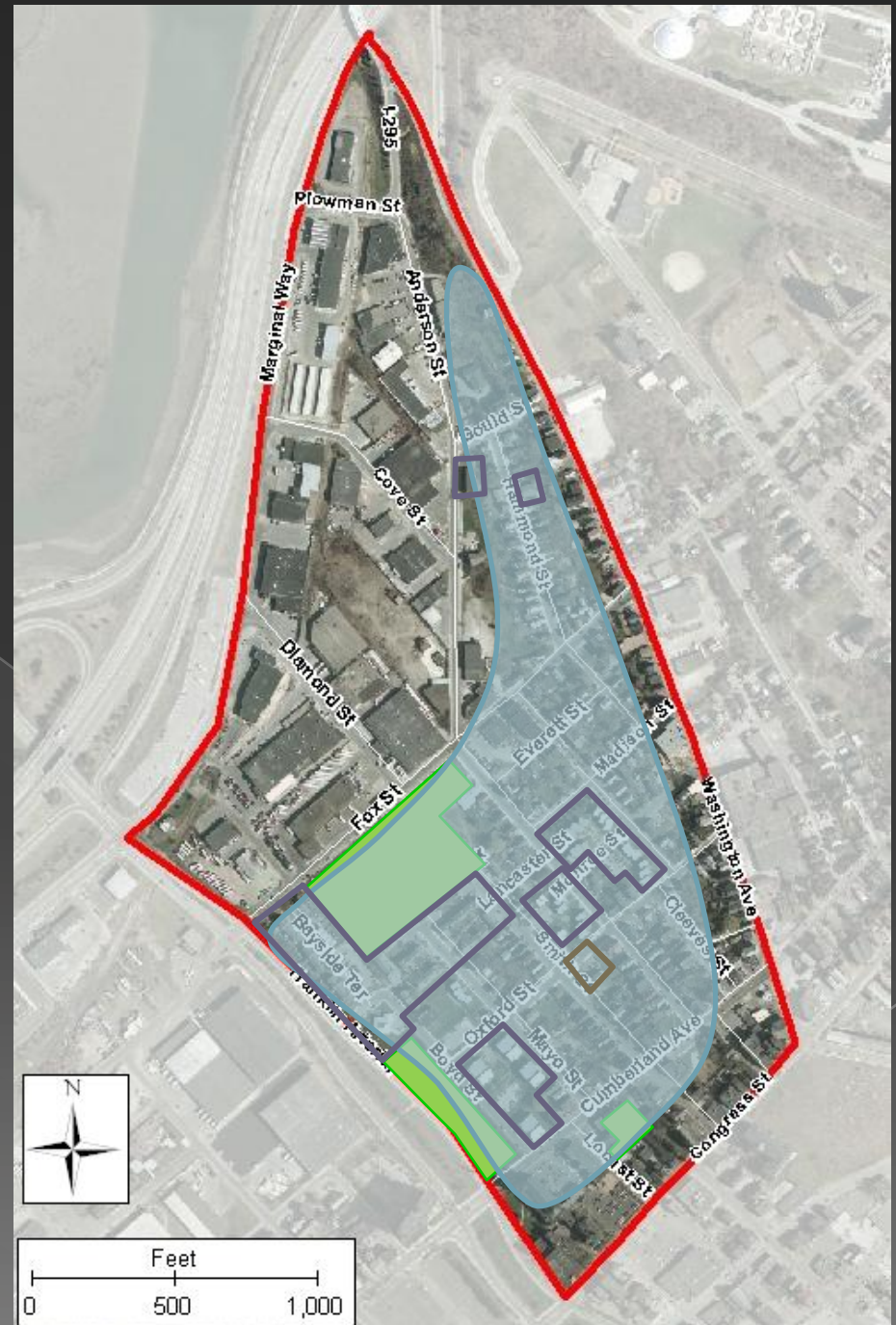
# Our analysis:

- Residential district background
- Surveys:
  - Commercial district survey
  - Lower bayside district survey
- Neighborhood meeting
  - Exercise 1
  - Exercise 2
  - Exercise 3
- Portland High meeting
- Recommendations

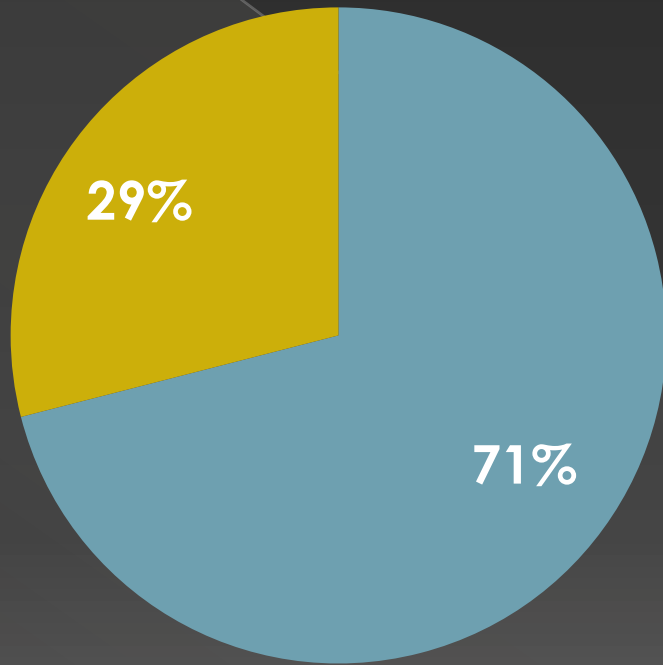


# RESIDENTIAL DISTRICT

- Approximately 20 housing units per acre of land
- 196 Public Housing units (PHA & PROP)
- 21 countries of origin represented (PHA survey 12/08)
- 48% chance that any two residents who randomly meet will be of a different race (2000 census)

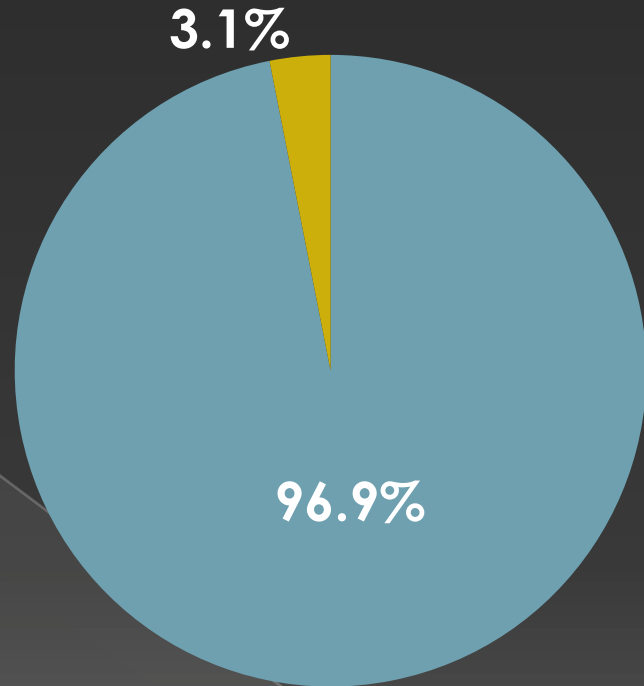


# East Bayside



- White
- Other races

# Maine



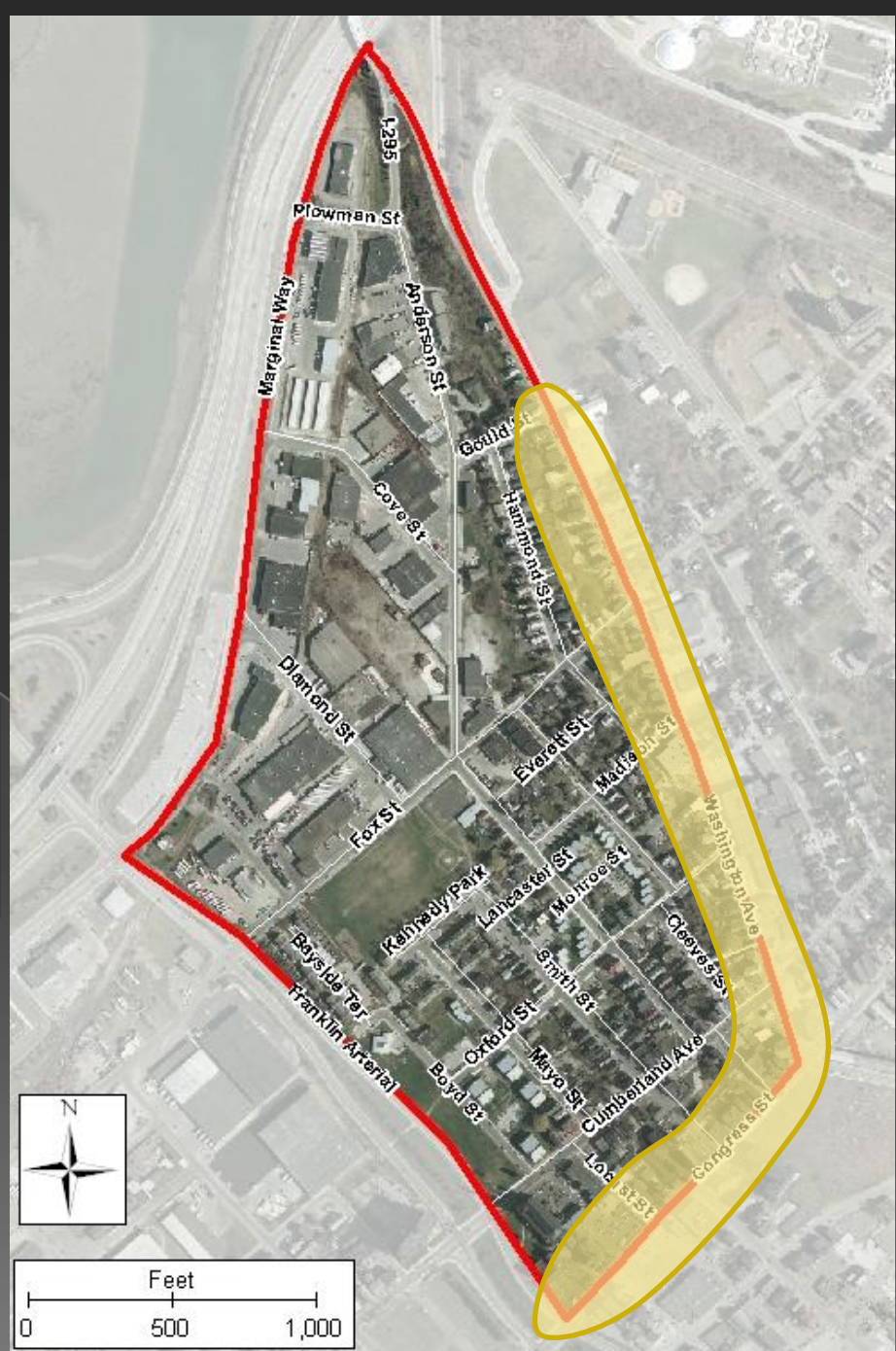
- White
- Other races

And just a 5 min walk away...

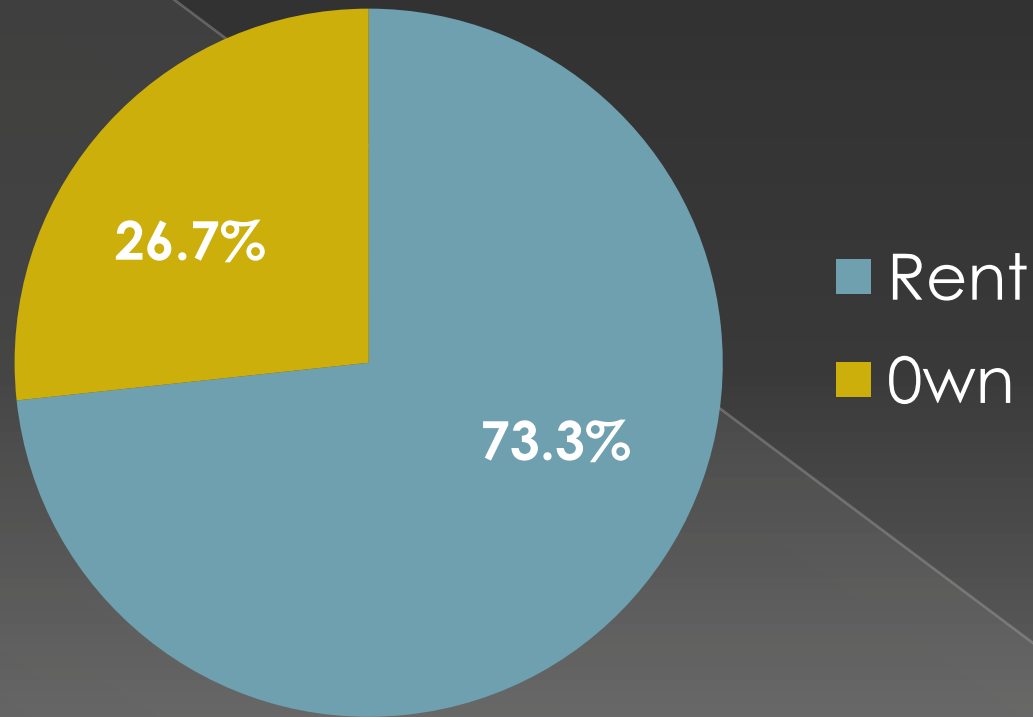


# COMMERCIAL DISTRICT

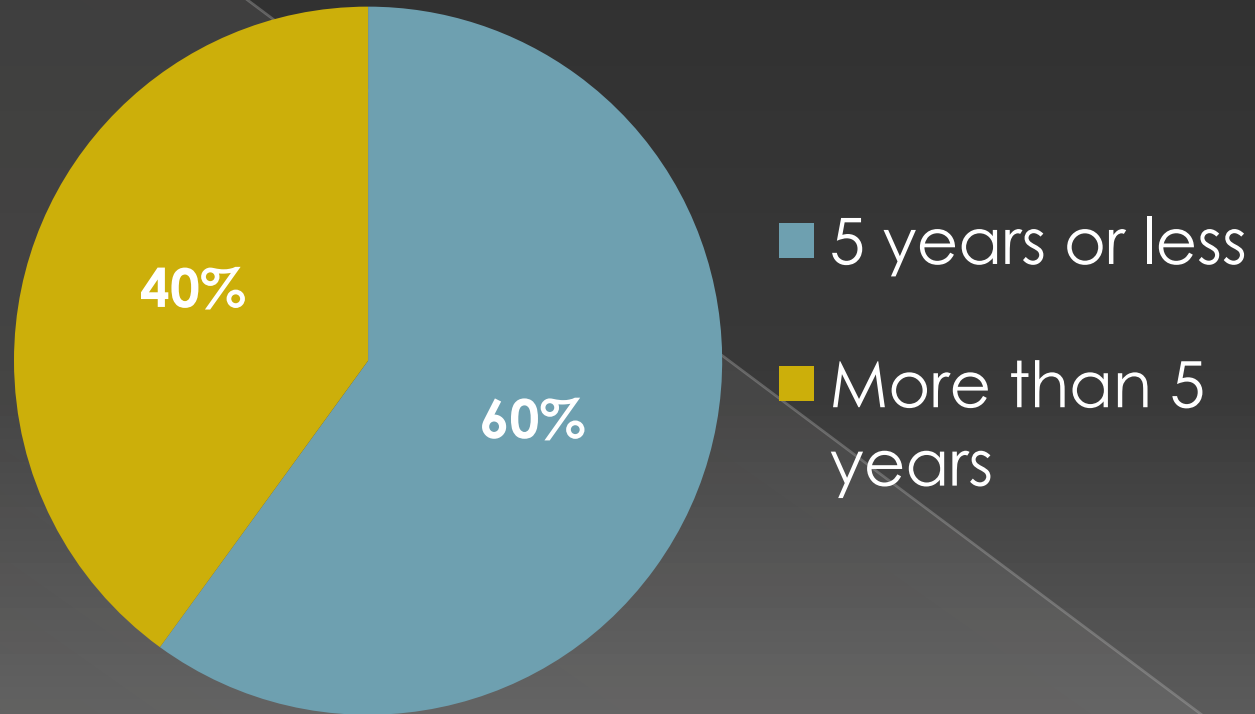
## Survey...



# Businesses surveyed in commercial district: Rent or own building



# Businesses surveyed in commercial district: Years in Business



# LOWER BAYSIDE DISTRICT

**40 businesses surveyed**

**Variety of different uses:**

- Manufacturing and retail
- Old and new
- Small and large
- Local and chains

**Locus for:**

- Building and electrical supplies
- Business startups
- Art studios





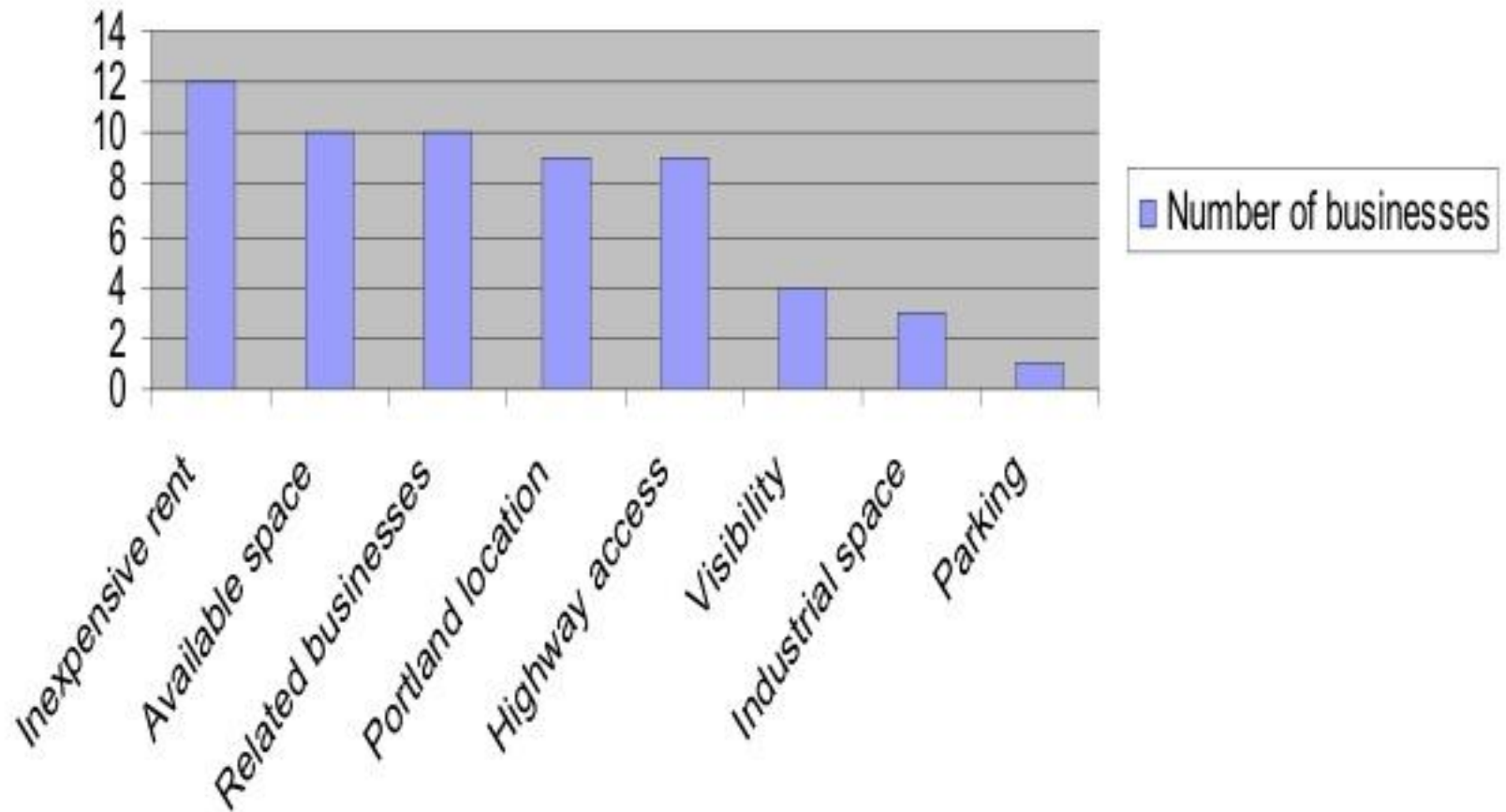


## Currently zoned:

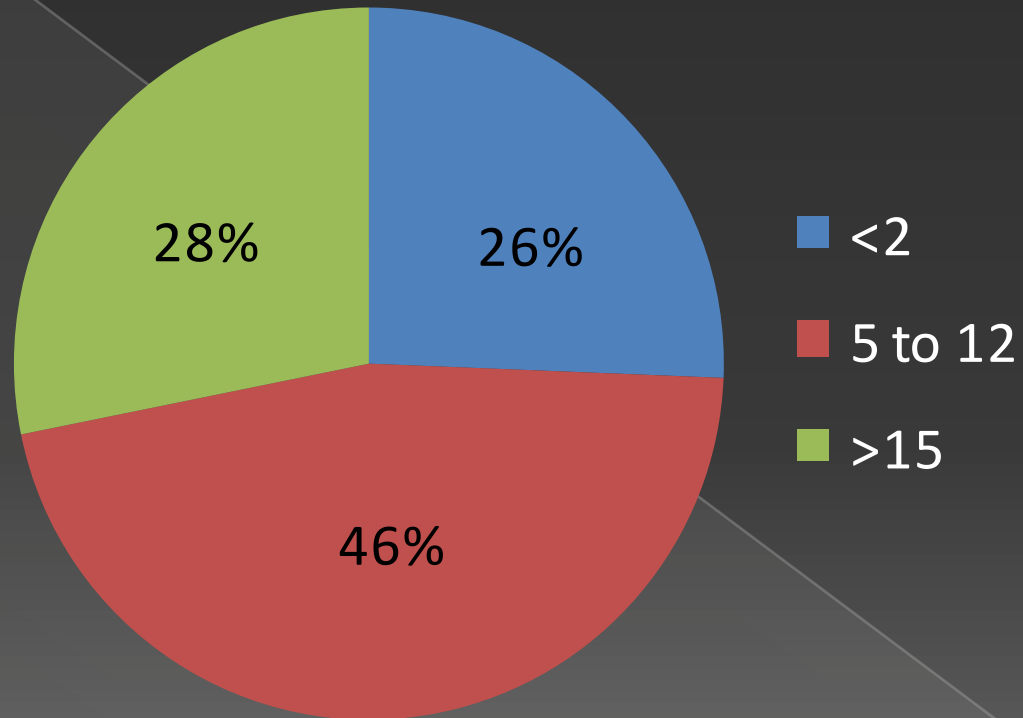
- I-Lb *Low Impact Industrial Zone*
- B5 *Business Zone*



## Factors Determining Choice of Business Location



# Years in Business



*Summary of  
EBNO/PHA meeting  
April 21, 2009...*

# EXERCISE 1:

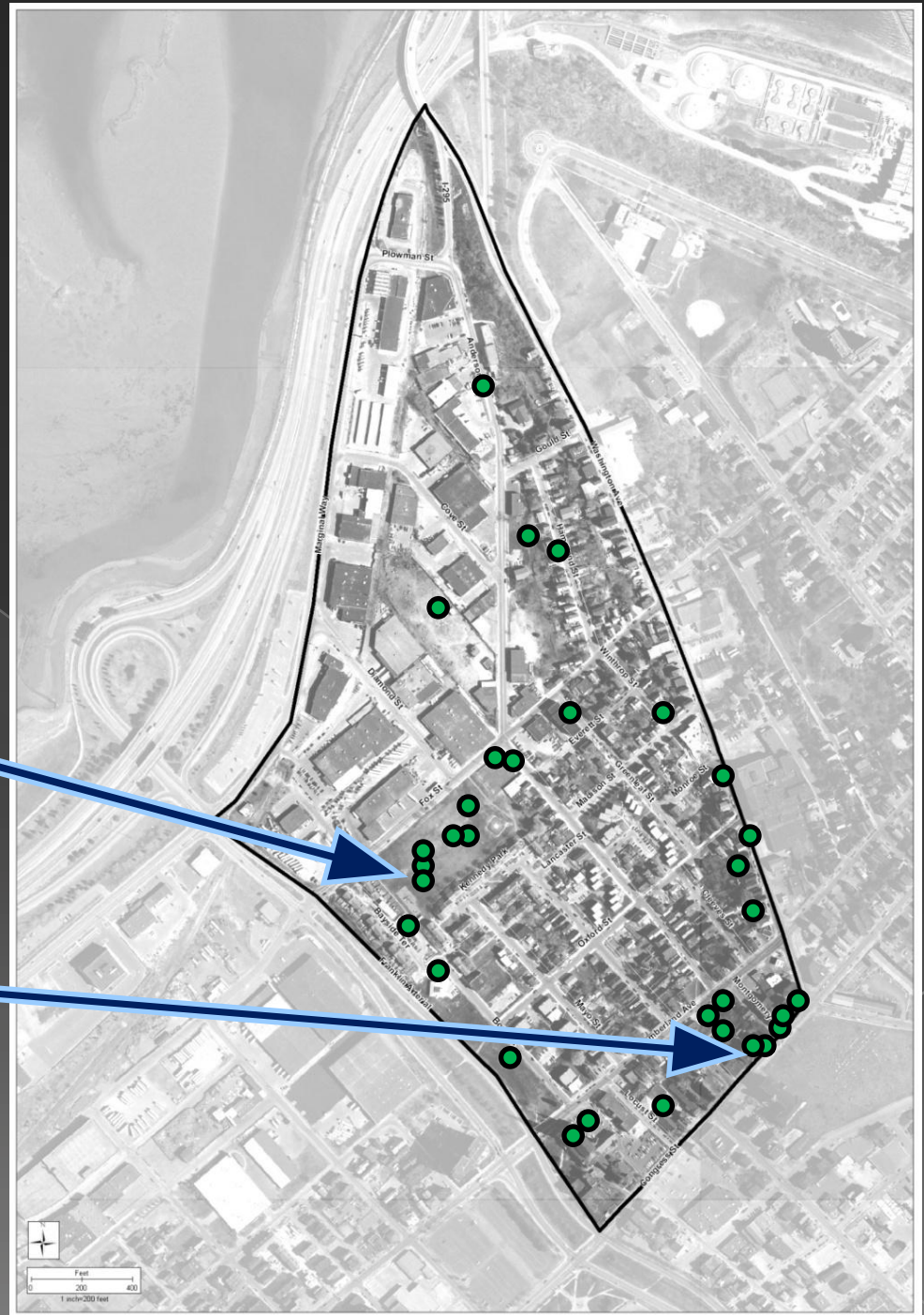
Placing red and green dots to identify assets and liabilities...



# East Bayside: Assets

Fox Field

Congress Street  
businesses

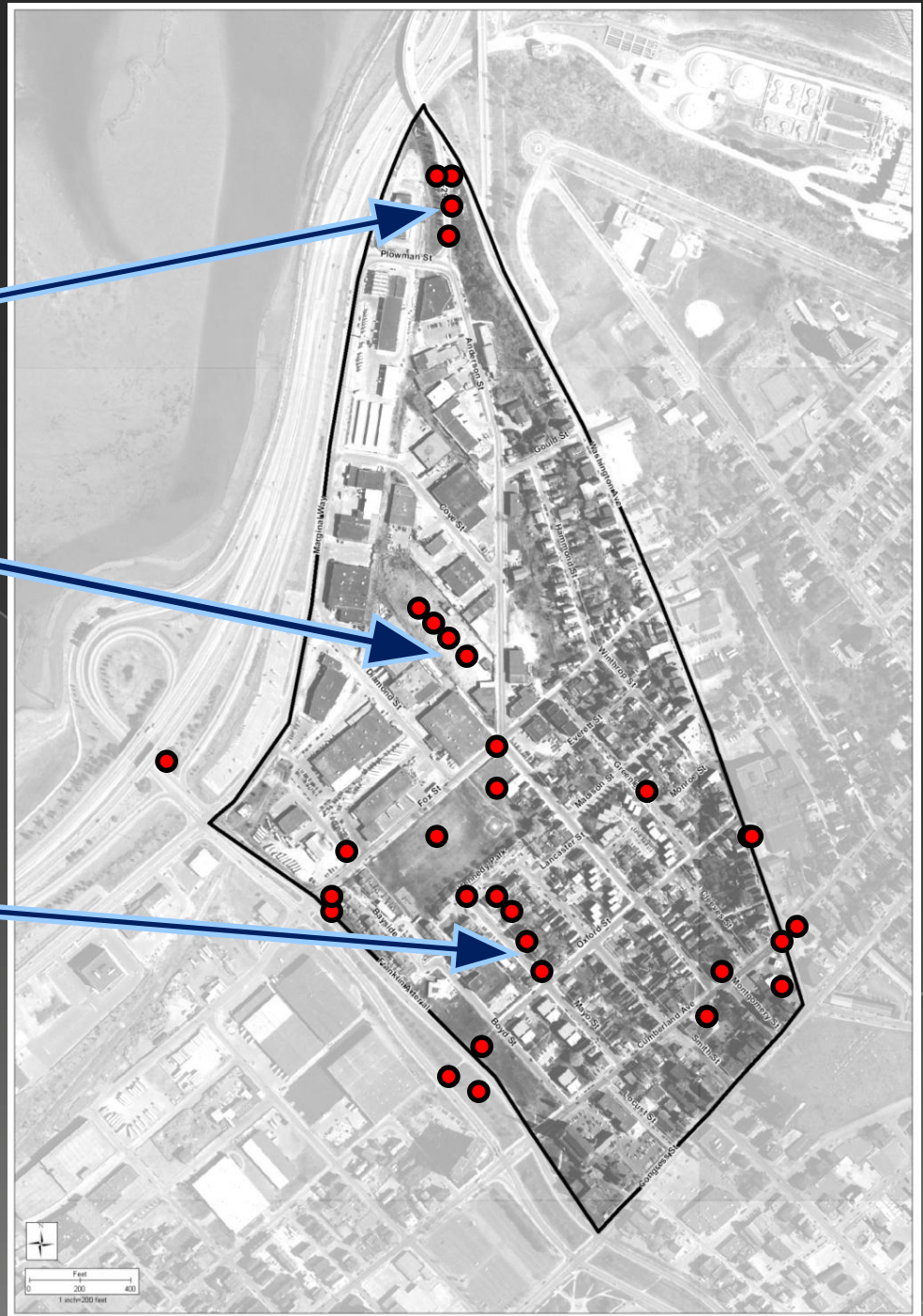


# East Bayside: Liabilities

Exit 8

Scrap yard

Mayo Street





## EXERCISE 2:

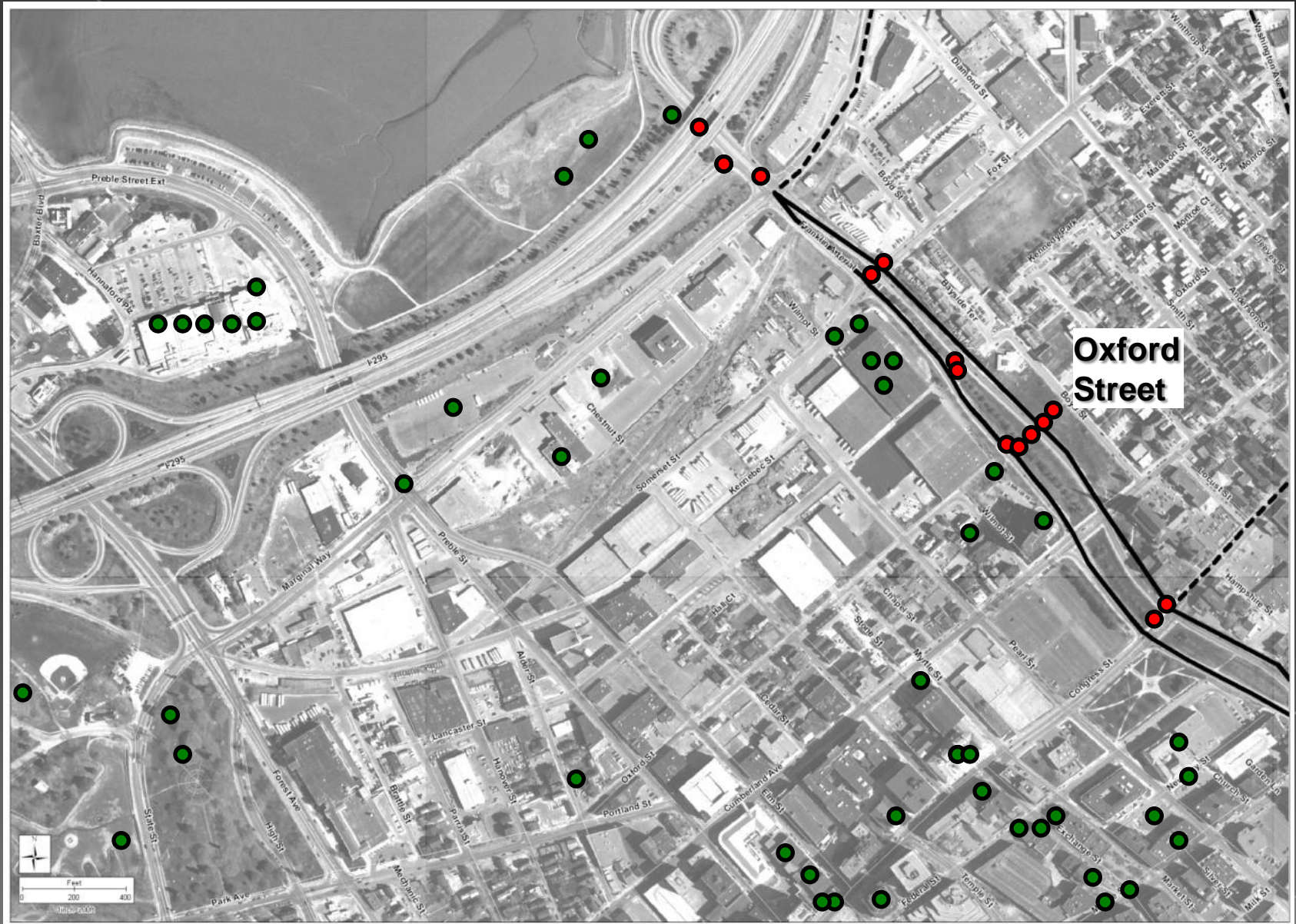
mark destinations from EB  
and crossings of Franklin  
Arterial...



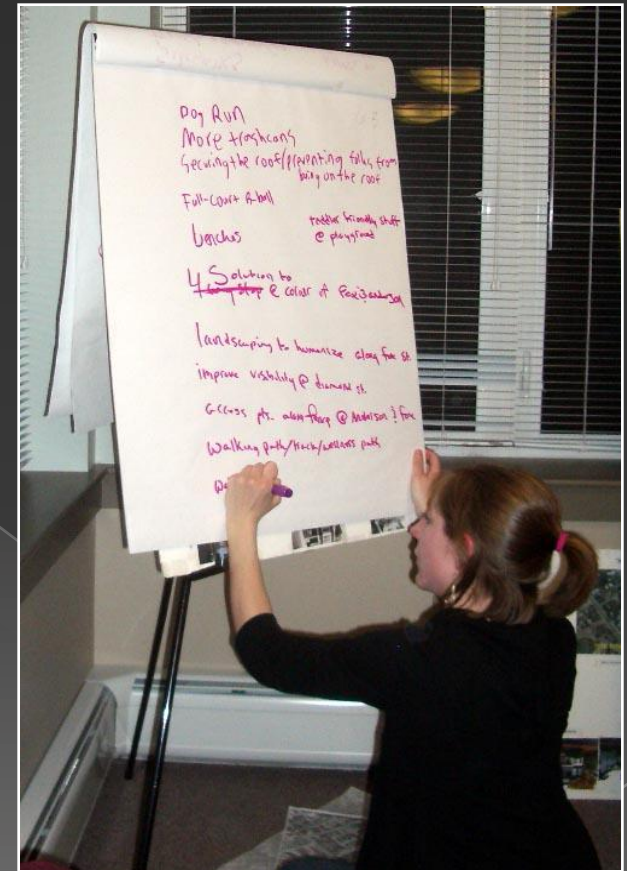
# What could this become?



# Franklin Arterial-Destinations and Crossings



# ...brainstorming visions for Franklin Arterial



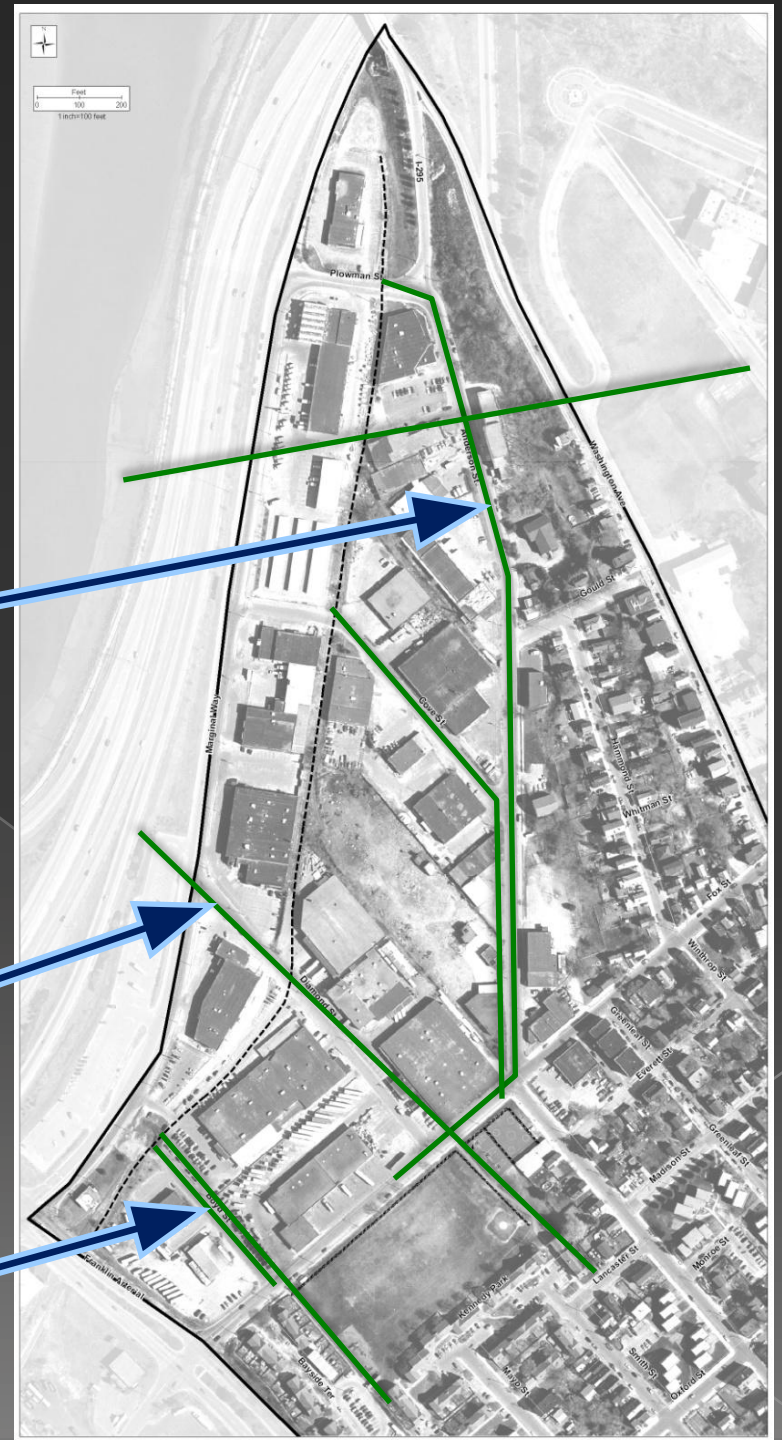
# EXERCISE 3:

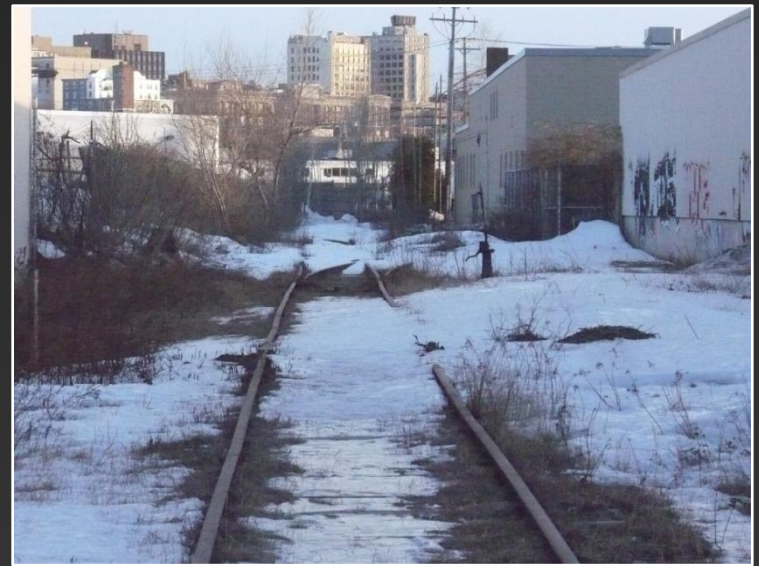
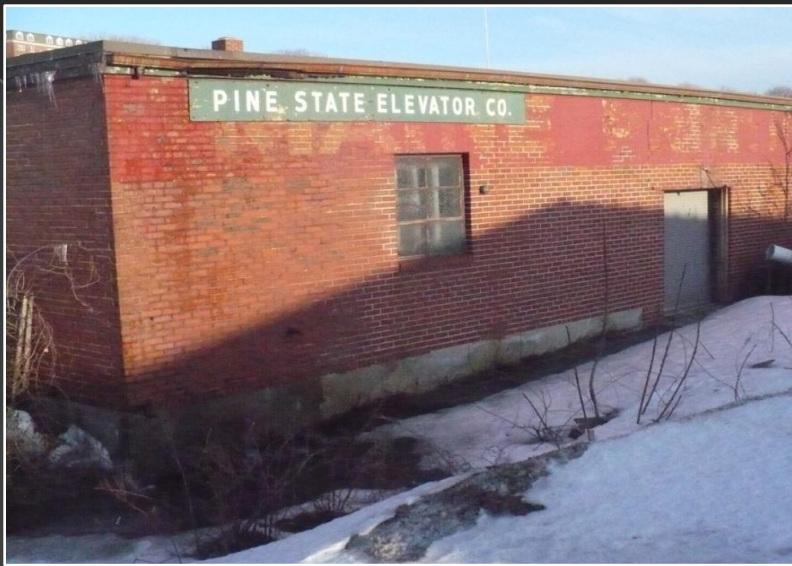
## Bayside Trail Connections:

Anderson St.

Diamond St.

N. Boyd St.





What could this become?



# Brainstorming ideas for Fox Field...



# In summary...





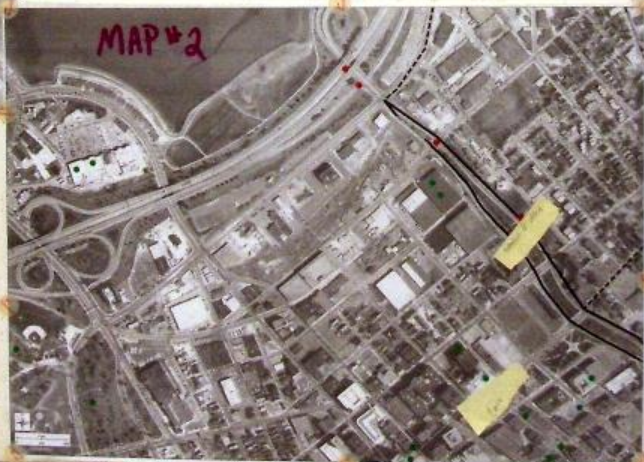


### FRANKLIN Artoial

- Sidewalks
- Mixed Use Land use opportunities
- Ped., bicycle, etc. access & crossing
- Transit

### Kennedy Park

- enhancing boundaries
- landscaping - more Green - Softer
- Space management
- Fox/Anderson Intorgary
- Policing



### TEAM 6

East Bayside  
Community Meeting  
April 23, 2008

Team Members:  
Mike Babush  
**GREG MARTIN**  
Liz Bern  
Marcus Pitar  
Dora Gray

Division for East Bay Area Improvement and Organization - Portland Housing Authority  
Copyright © 2008, Portland Housing Authority



Franklin

- Usable green
- sidewalks both sides
- \* bridges - desire

Kenedy - Park Obama Sports Complex

- practical physical improvements
- integration - industrial

- Anderson connection to trail

Summary - Big ideas



**TEAM 2** East BaySide  
Community Meeting  
April 21, 2009

Team Members:  
Kate Benedict  
Shirley Kay  
Ward Willis  
Bill Neville

City of San Francisco Planning and Urban Research Department, 1400 Market Street, San Francisco, CA 94102

MAP #1



# SUMMARY BIG IDEAS

## FRANKLIN

- FEEL COMFORTABLE  
LOUNGING IN GREEN  
(enhance! utilize!)
- PED BRIDGE FIX
- SIDEWALK ON K SIDE TRUNK
- IMPROVE PED X TIME  
ENFORCEMENT
- SAFE BIKING

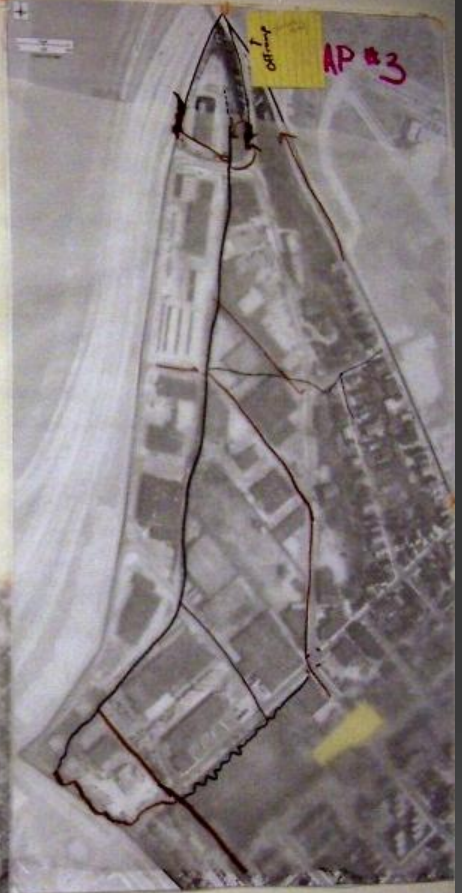
## PARK VISION

- BENCHES OBSERVE AREAS  
PICNIC TABLES
- EBWO OFFICE + GARDEN
- LIGHTING
- ENTRANCES TO FIELD
- PARKING
- TRASH CANS
- FULL COURT B/BALL
- RE-WORK PARKS BUILDINGS

MAP #2



MAP #3



### TEAM 3

East BaySide  
Community Meeting  
April 21, 2009

Team Members:

<i>Mark Klein</i>	<i>Mark Klein</i>
<i>Brad Klein</i>	<i>Brad Klein</i>
<i>Lucy Klein</i>	<i>Lucy Klein</i>
<i>Jane Klein</i>	<i>Jane Klein</i>
<i>John Klein</i>	<i>John Klein</i>

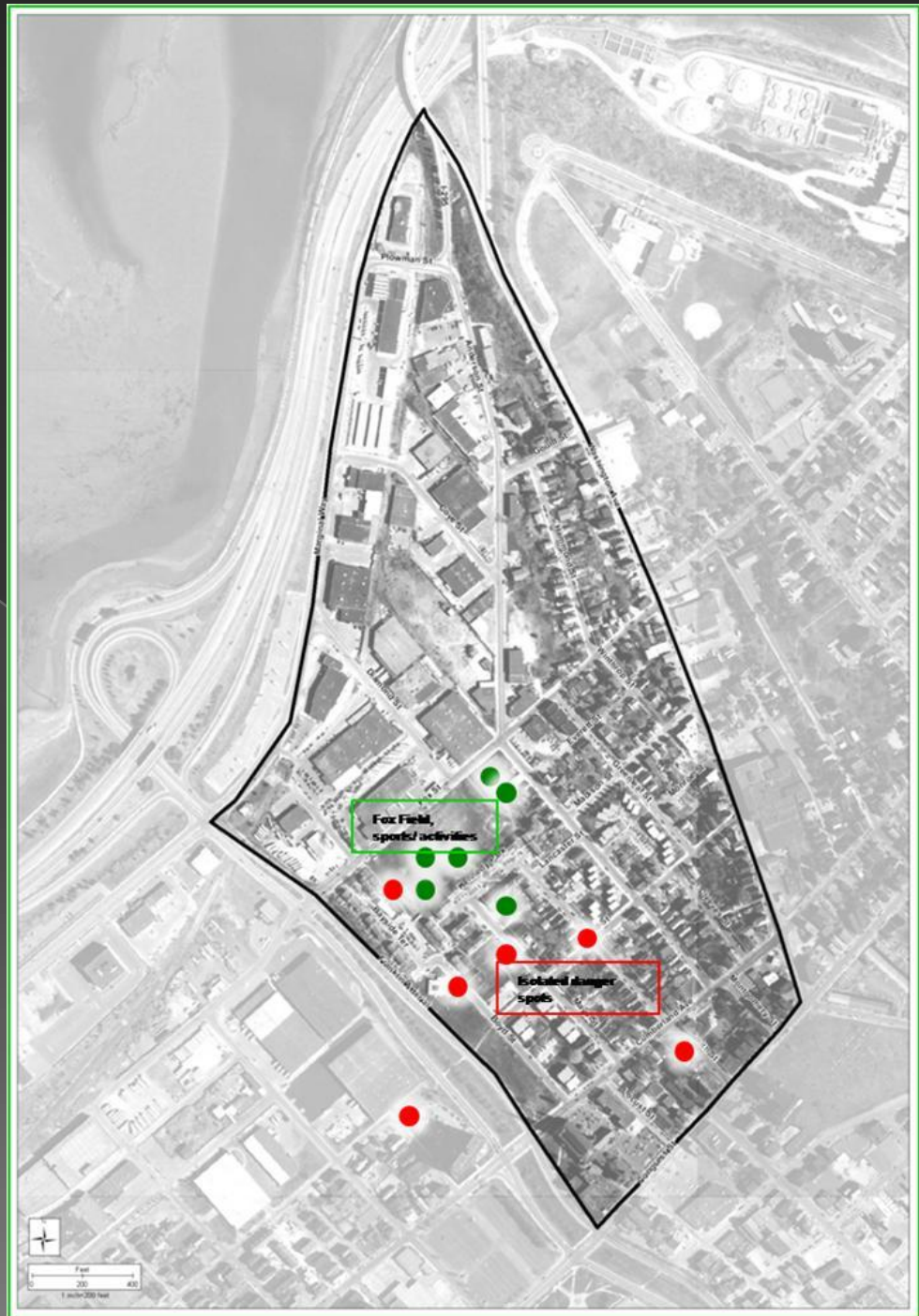
© 2009 East BaySide Neighborhood Organization - Portland Planning Authority  
Produced by the Planning Workshop 2009, a member of the Public Service (PS)

*Summary of  
Meeting at  
Portland High School  
May 8th, 2009...*

# Brainstorming about Fox Field and the trail...



# Portland High School assets and liabilities exercise:



# Portland High School: Major Ideas for Improvement

## Activities:

Full basketball court, seating along fox st. bbq Pit, picnic benches, practice soccer field

## Safety:

Improve fence along Fox St., better side walk along: Fox St, Diamond St, Franklin Art, night lighting on fields

## Aesthetics:

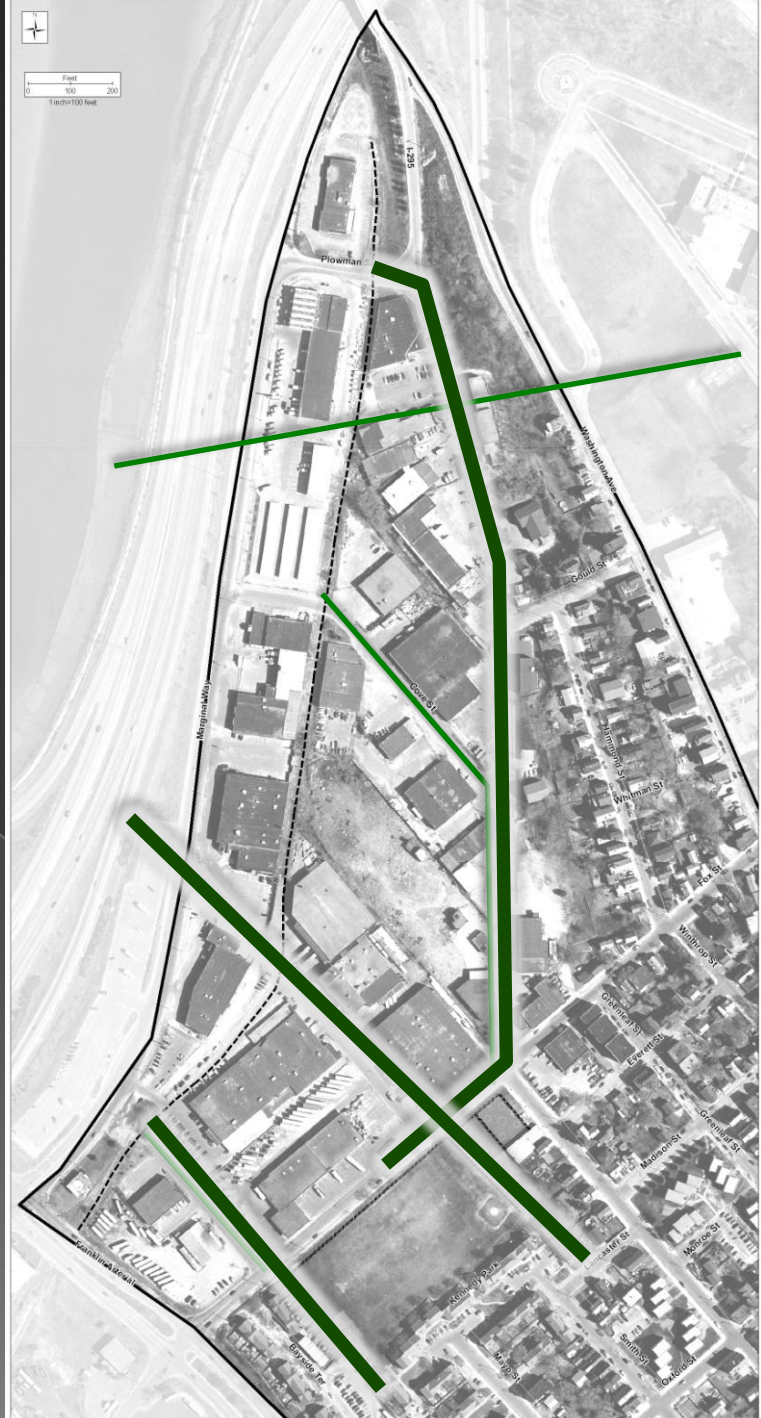
More trees, big sign for KP and Fox Field, more murals along Fox

# Recommendations for the East Bayside Neighborhood





# Portland Trail Extension



# Mayo Street and parking lots



# Franklin Arterial



# Business district along Congress and Washington



# Fox Field



# EAST BAYSIDE NEIGHBORHOOD ORGANIZATION

