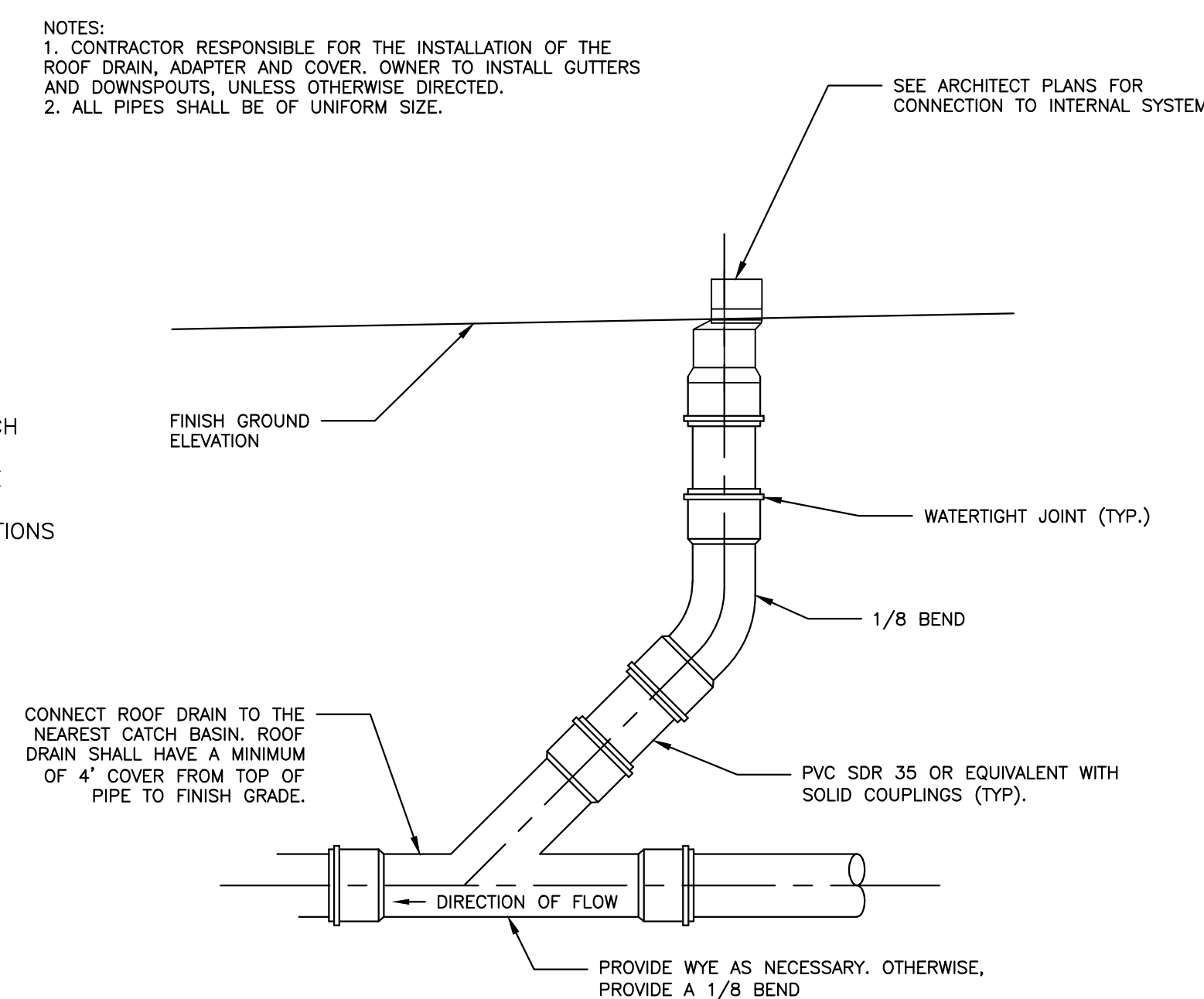
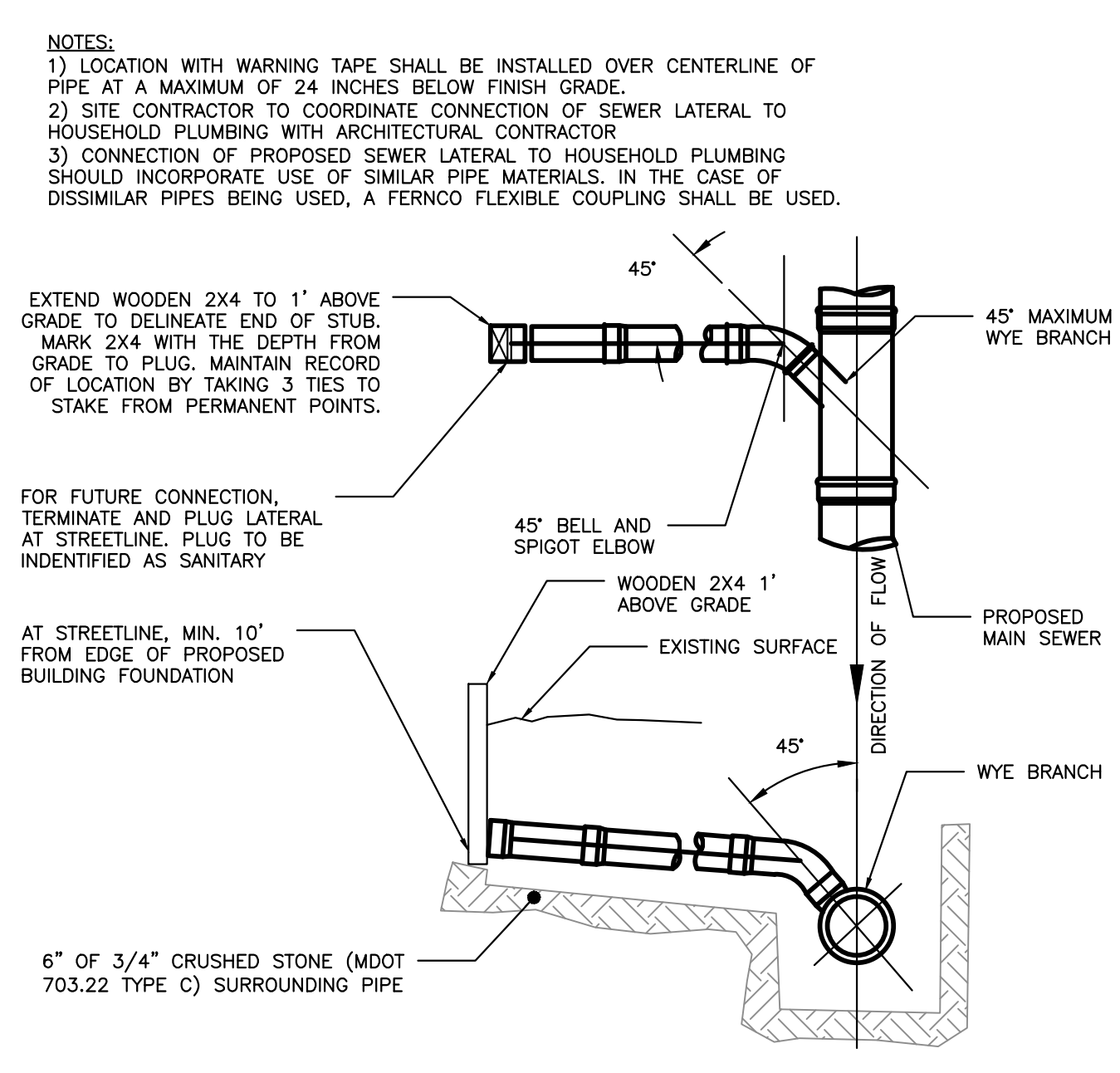


CATCH BASIN HOOD DETAIL
NOT TO SCALE

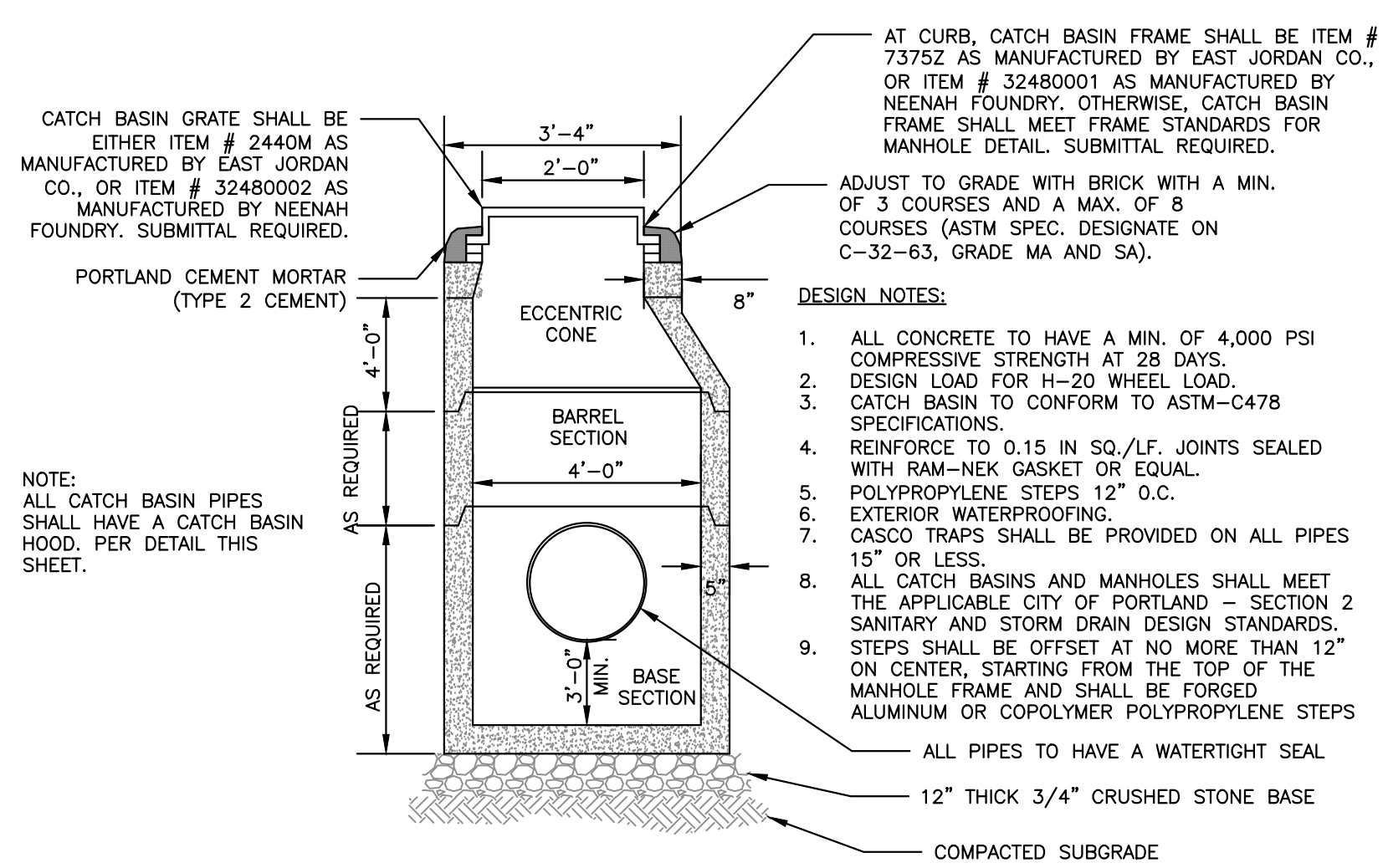
- NOTES:
1. INSTALL CATCH BASIN HOODS IN ALL CATCH BASINS WITH A 12" OR 15" OUTLET PIPE.
 2. PREFERRED STYLE DESIGNED TO ELIMINATE CEMENTING OF THE TRAP.
 3. REFER TO MANUFACTURER'S RECOMMENDATIONS FOR INSTALLATION REQUIREMENTS



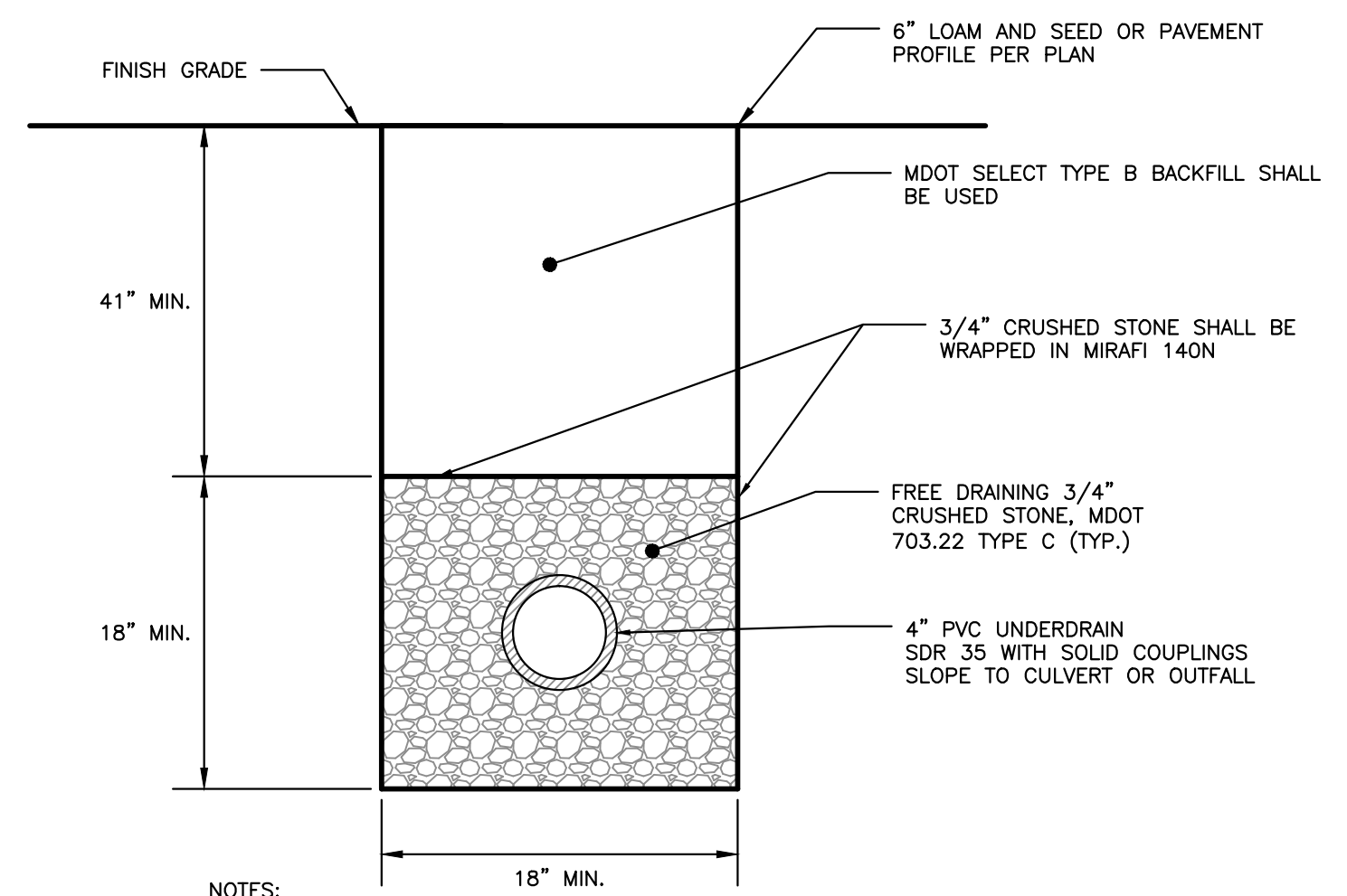
ROOF DRAIN DETAIL
NOT TO SCALE



SEWER TEE/WYE CONNECTION DETAIL
NOT TO SCALE

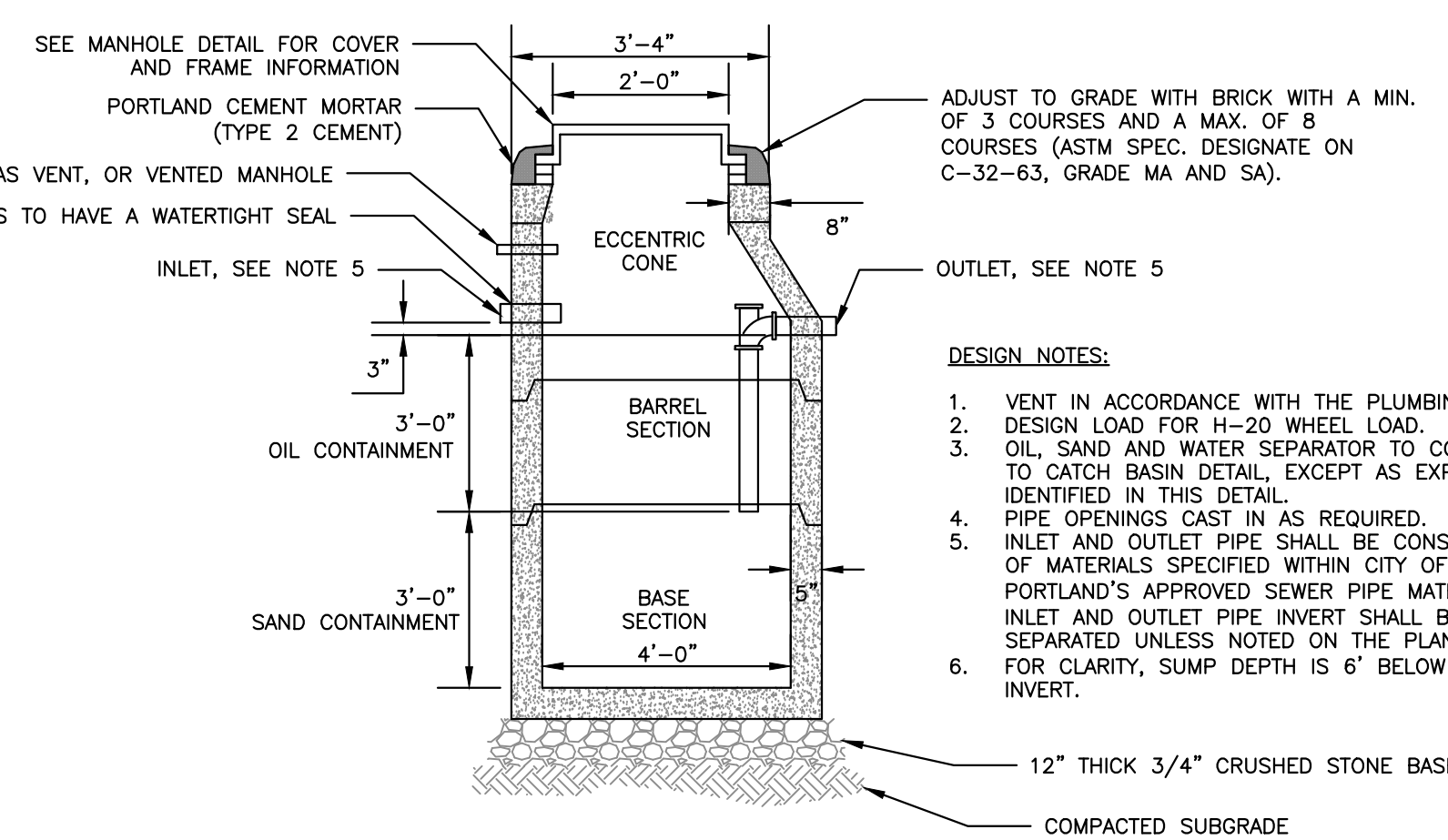


4'-0" DIAMETER PRECAST CATCH BASIN
NOT TO SCALE

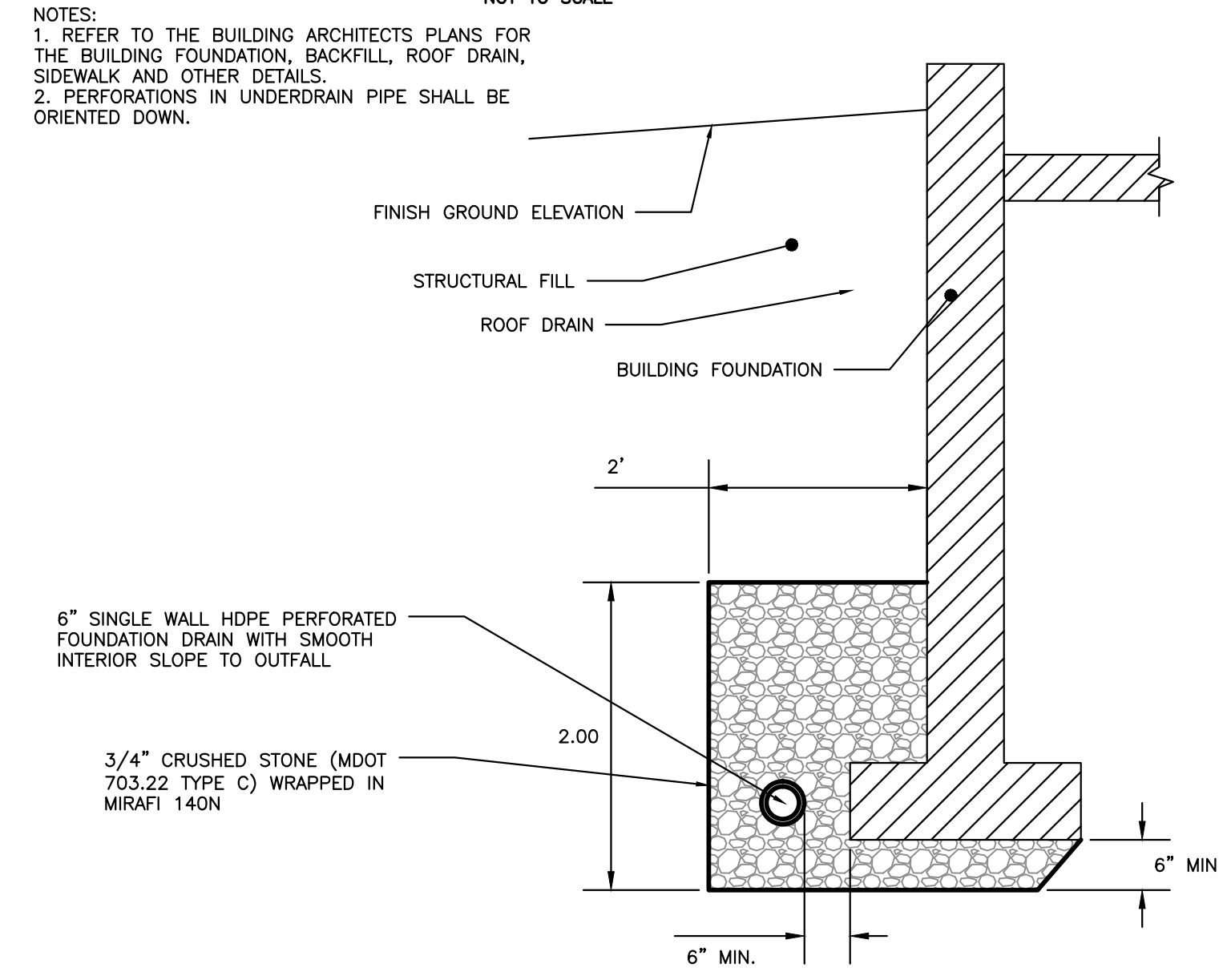


- NOTES:
1. MINIMUM UNDERDRAIN SLOPE 0.0025 (0.25%)
 2. PERFORATIONS IN UNDERDRAIN PIPE SHALL BE ORIENTED DOWN.

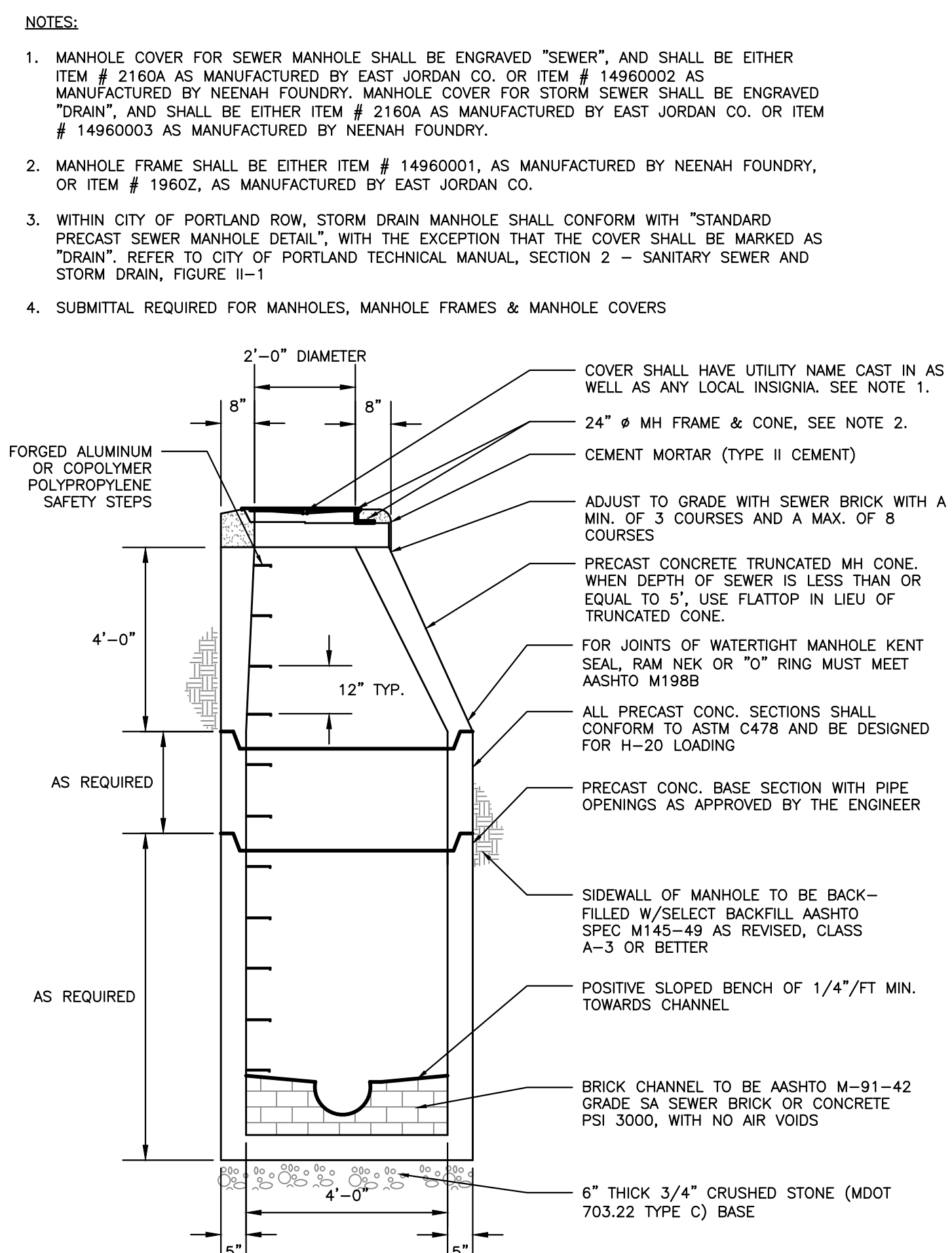
UNDERDRAIN DETAIL
NOT TO SCALE



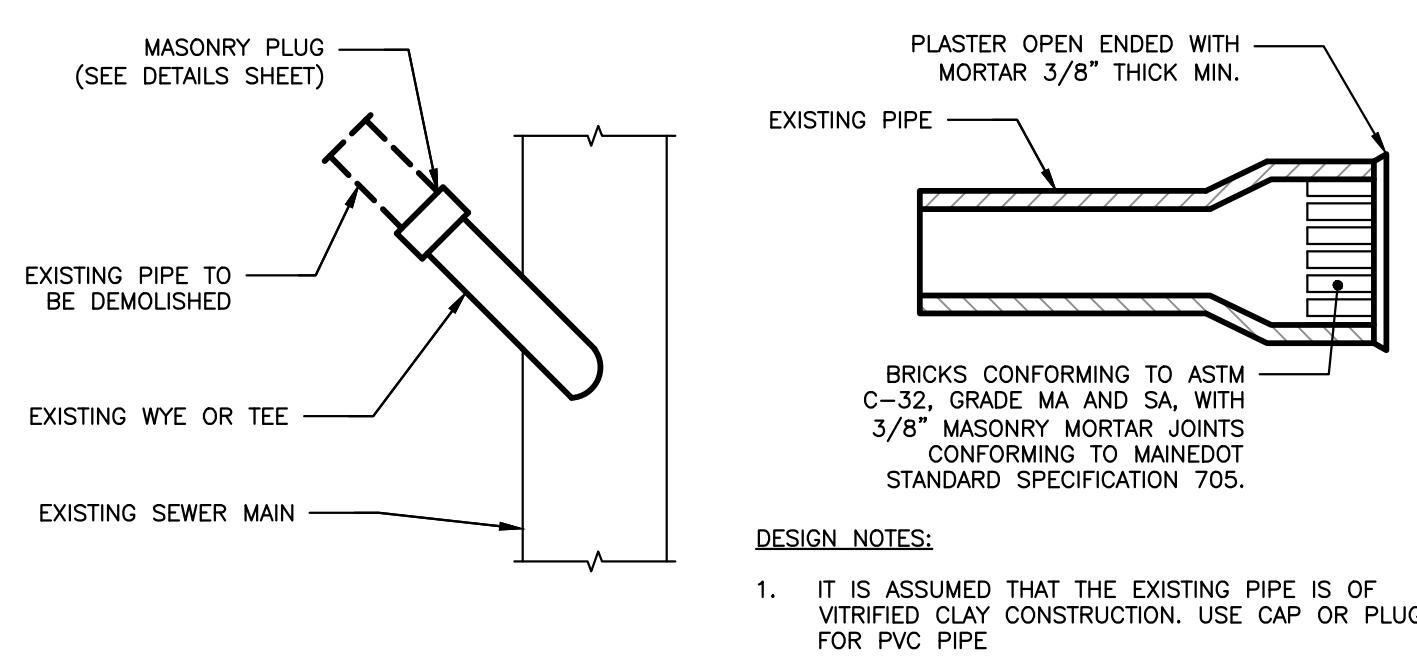
4'-0" DIAMETER PRECAST OIL AND WATER SEPARATOR
NOT TO SCALE



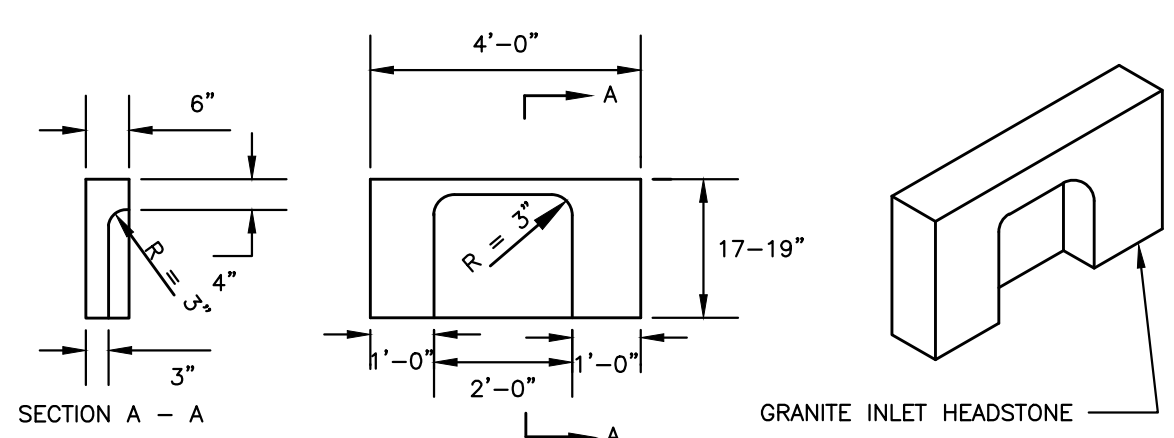
FOUNDATION DRAIN DETAIL
NOT TO SCALE



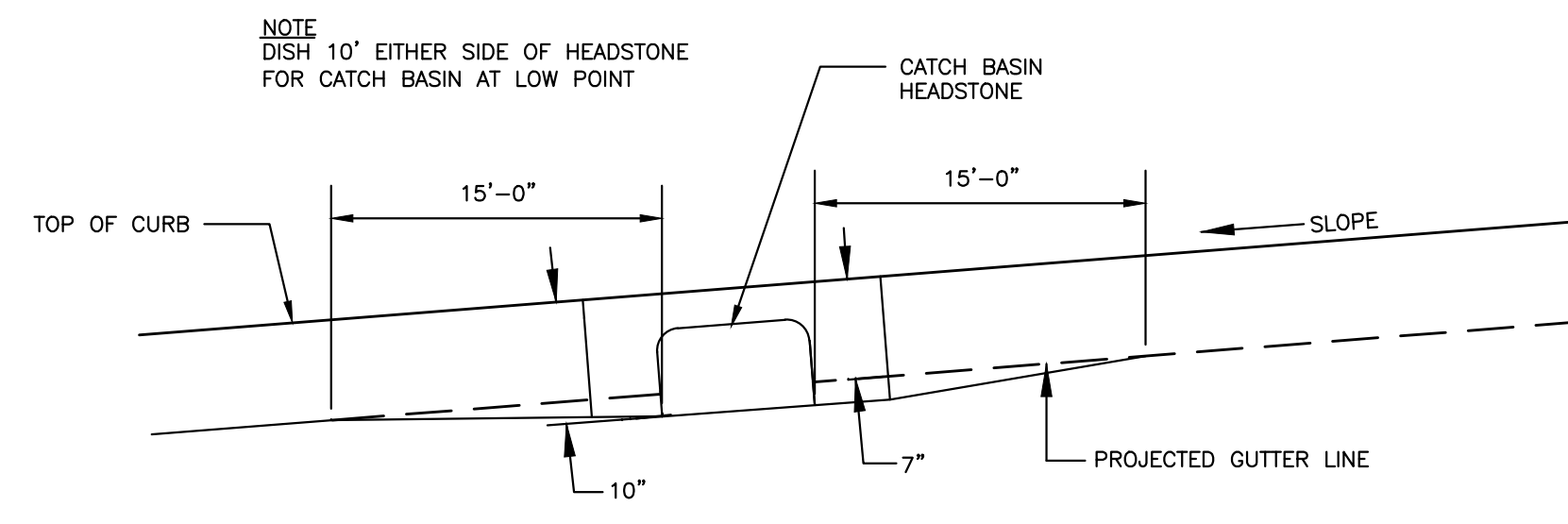
STANDARD PRECAST SEWER MANHOLE
NOT TO SCALE



MASONRY PLUG DETAIL
NOT TO SCALE



4' GRANITE HEADSTONE FOR CATCH BASIN INLET
NOT TO SCALE



PAVEMENT GRADING ON SLOPES FOR CATCH BASIN AND INLET
NOT TO SCALE

- NOTES:
1. CONTRACTOR RESPONSIBLE FOR THE INSTALLATION OF THE ROOF DRAIN, ADAPTER AND COVER. OWNER TO INSTALL GUTTERS AND DOWNSPOUTS, UNLESS OTHERWISE DIRECTED.
 2. ALL PIPES SHALL BE OF UNIFORM SIZE.

- NOTES:
- 1) LOCATION WITH WARNING TAPE SHALL BE INSTALLED OVER CENTERLINE OF PIPE AT A MAXIMUM OF 24 INCHES BELOW FINISH GRADE.
 - 2) SITE CONTRACTOR TO COORDINATE CONNECTION OF SEWER LATERAL TO HOUSEHOLD PLUMBING WITH ARCHITECTURAL CONTRACTOR
 - 3) CONNECTION OF PROPOSED SEWER LATERAL TO HOUSEHOLD PLUMBING SHOULD INCORPORATE USE OF SIMILAR PIPE MATERIALS. IN THE CASE OF DISSIMILAR PIPES BEING USED, A FERNOCO FLEXIBLE COUPLING SHALL BE USED.

- NOTE:
- ALL CATCH BASIN PIPES SHALL HAVE A CATCH BASIN HOOD, PER DETAIL THIS SHEET.

- DESIGN NOTES:
1. ALL CONCRETE TO HAVE A MIN. OF 4,000 PSI COMPRESSIVE STRENGTH AT 28 DAYS.
 2. DESIGN LOAD FOR H-20 WHEEL LOAD.
 3. CATCH BASIN TO CONFORM TO ASTM-C478 SPECIFICATIONS.
 4. REINFORCE TO 0.15 IN SQ./LF. JOINTS SEALED WITH RAM-NEK GASKET OR EQUAL.
 5. POLYPROPYLENE STEPS 12" O.C.
 6. EXTERIOR WATERPROOFING.
 7. CASCO TRAPS SHALL BE PROVIDED ON ALL PIPES 15" OR LESS.
 8. ALL CATCH BASINS AND MANHOLES SHALL MEET THE APPLICABLE CITY OF PORTLAND - SECTION 2 SANITARY AND STORM DRAIN DESIGN STANDARDS. STEPS SHALL BE OFFSET AT NO MORE THAN 12" ON CENTER, STARTING FROM THE TOP OF THE MANHOLE FRAME AND SHALL BE FORGED ALUMINUM OR COPOLYMER POLYPROPYLENE STEPS
 9. ALL PIPES TO HAVE A WATERTIGHT SEAL

- NOTES:
1. MANHOLE COVER FOR SEWER MANHOLE SHALL BE ENGRAVED "SEWER", AND SHALL BE EITHER ITEM # 2160A AS MANUFACTURED BY EAST JORDAN CO. OR ITEM # 14960002 AS MANUFACTURED BY NEENAH FOUNDRY. MANHOLE COVER FOR STORM SEWER SHALL BE ENGRAVED "DRAIN", AND SHALL BE EITHER ITEM # 2160A AS MANUFACTURED BY EAST JORDAN CO. OR ITEM # 14960003 AS MANUFACTURED BY NEENAH FOUNDRY.
 2. MANHOLE FRAME SHALL BE EITHER ITEM # 14960001, AS MANUFACTURED BY NEENAH FOUNDRY, OR ITEM # 19602, AS MANUFACTURED BY EAST JORDAN CO.
 3. WITHIN CITY OF PORTLAND ROW, STORM DRAIN MANHOLE SHALL CONFORM WITH "STANDARD PRECAST SEWER MANHOLE DETAIL", WITH THE EXCEPTION THAT THE COVER SHALL BE MARKED AS "DRAIN". REFER TO CITY OF PORTLAND TECHNICAL MANUAL, SECTION 2 - SANITARY SEWER AND STORM DRAIN, FIGURE II-1
 4. SUBMITTAL REQUIRED FOR MANHOLES, MANHOLE FRAMES & MANHOLE COVERS

ISSUED FOR	BY
PRELIM. APPLICATION	WHS
	DATE
	7/30/15
REVISION	REV.
	DATE
DRAWING NAME: DRAINAGE DETAILS 1	
PROJECT NAME: 667 CONGRESS STREET REDEVELOPMENT	
CLIENT: REDFERN PROPERTIES, LLC.	
P.O. BOX 8816 PORTLAND, ME 04104	
DRAWING NO. C-43	