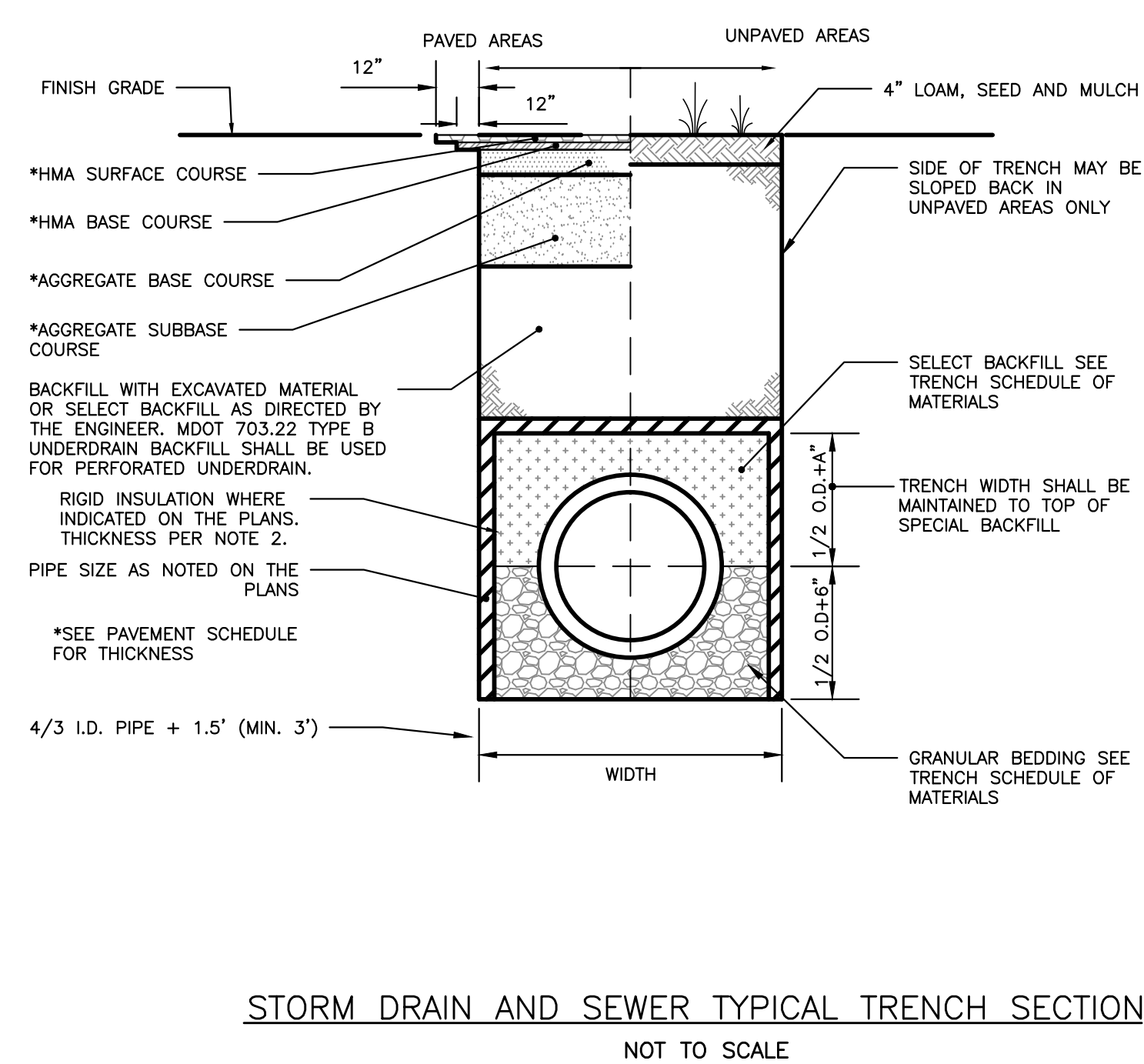
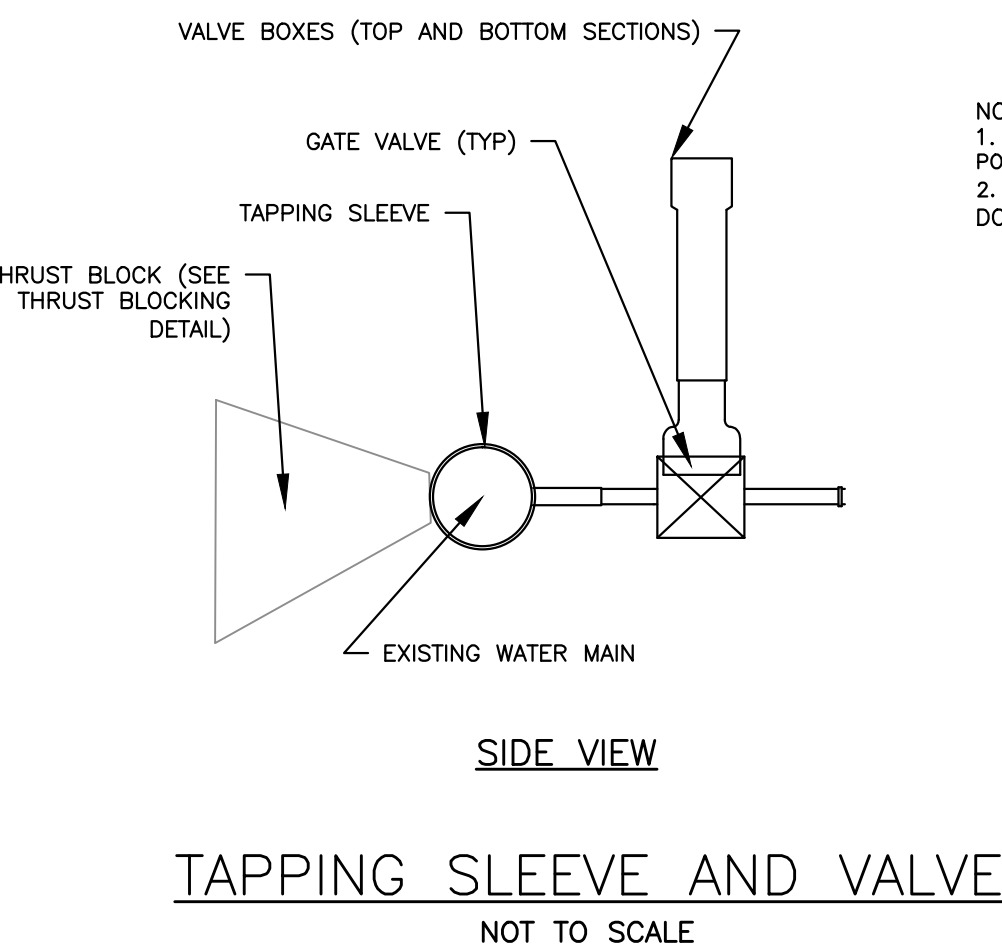
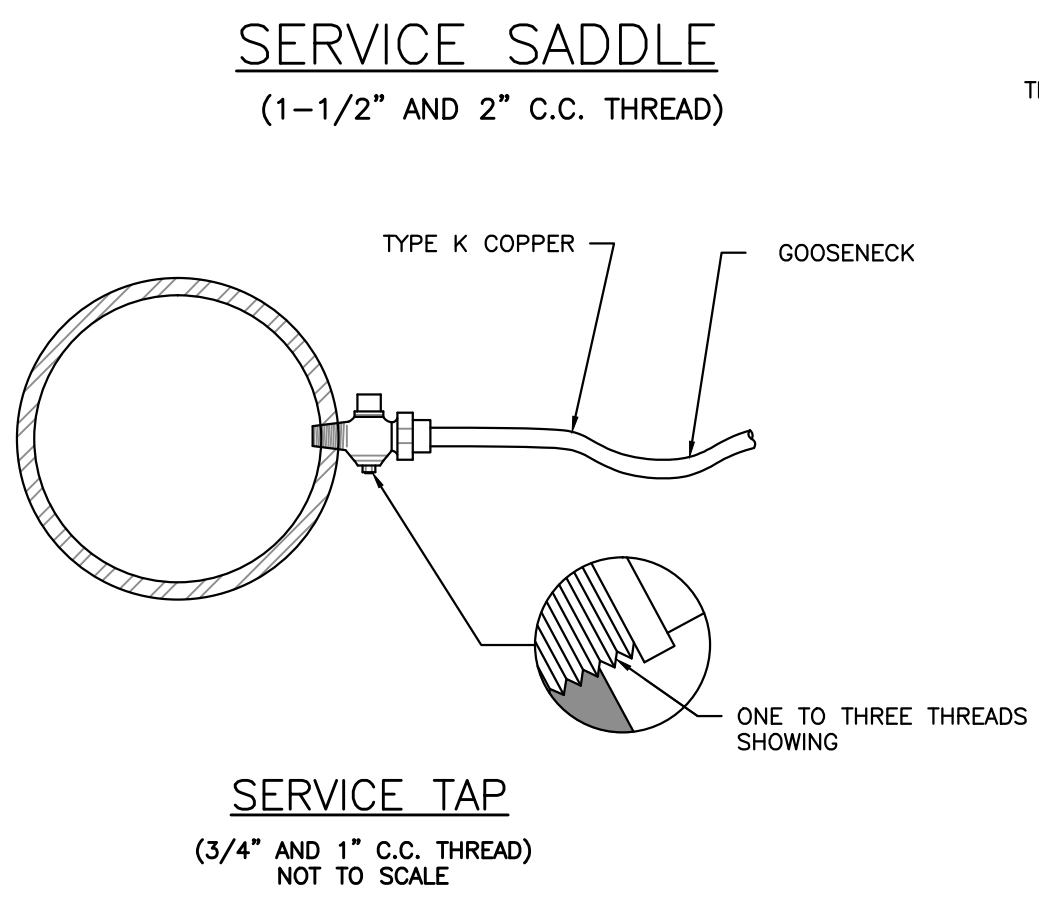
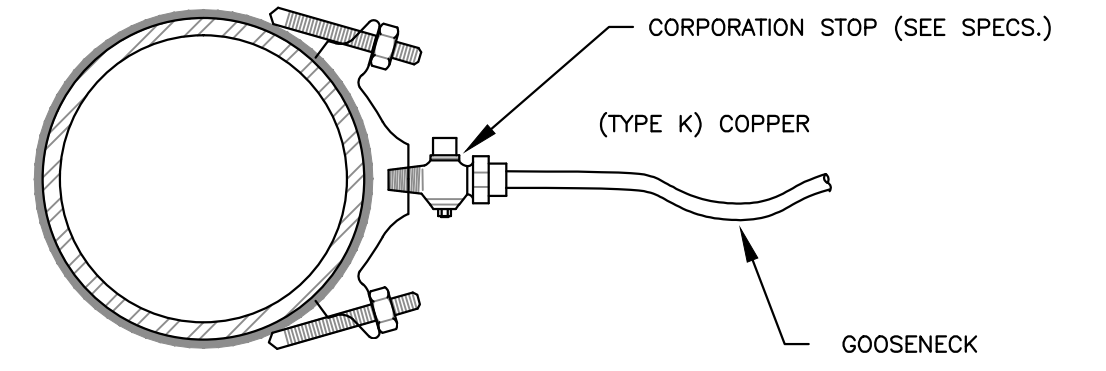
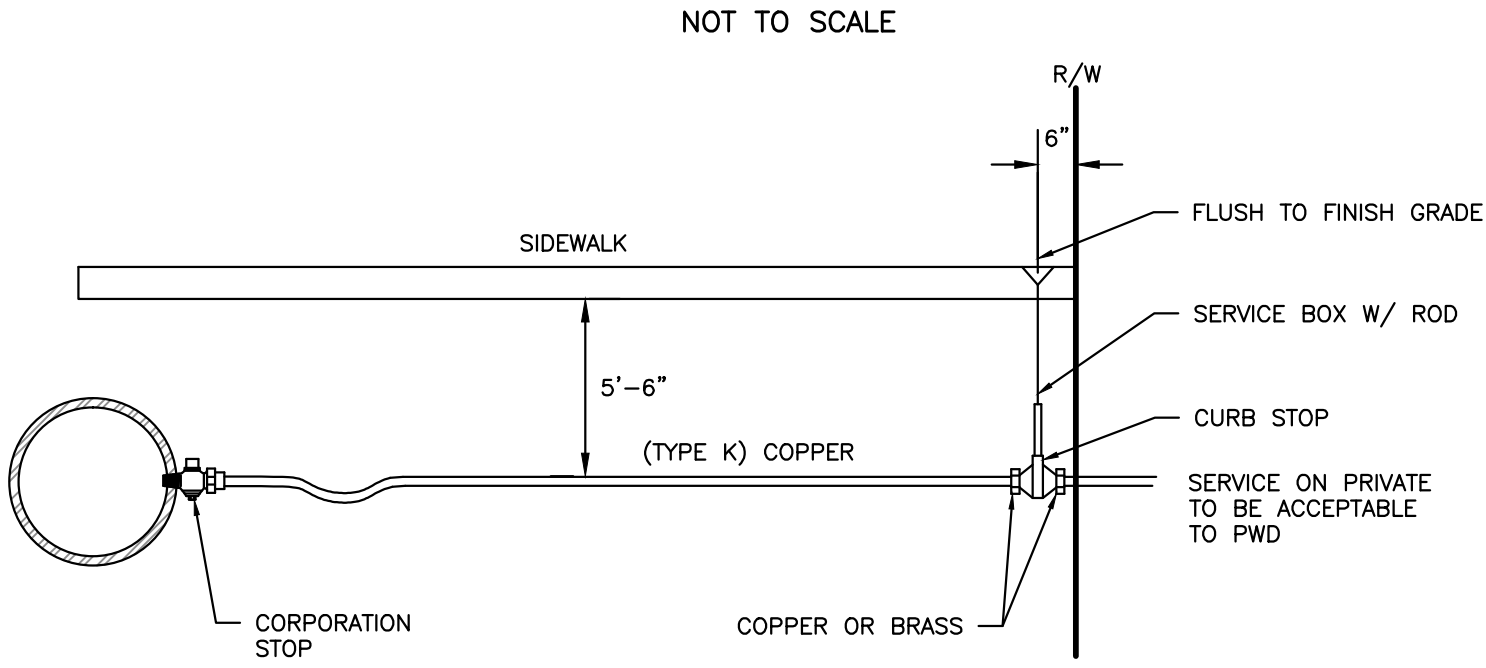


CONDUIT TYPE				
SERVICE	CONDUIT SIZE	GRASS AND PAVED AREAS	UTILITY	REMARKS
A	2-5"	SCHEDULE 40 PVC ELECTRICAL GRADE	PRIMARY POWER	SEE NOTE 1
B	2-4"	SCHEDULE 40 PVC	COMMUNICATION	-
C	2-4"	SCHEDULE 40 PVC ELECTRICAL GRADE	SPARE	IF REQUIRED
D	2-4"	SCHEDULE 40 PVC	CABLE	-

- NOTE:
- ONE CONDUIT CAPPED FOR SPARE, PROVIDE GALVANIZED STEEL LONG SWEEP AT RISER POLE AND EXTEND GALVANIZED CONDUIT TO 10" ABOVE GRADE AT POLE WITH STAND-OFF BRACKETS.
  - MINIMUM SEPARATION OF 24 INCHES BETWEEN PRIMARY CABLE/CONDUIT AND GAS LINES SHALL BE MAINTAINED.

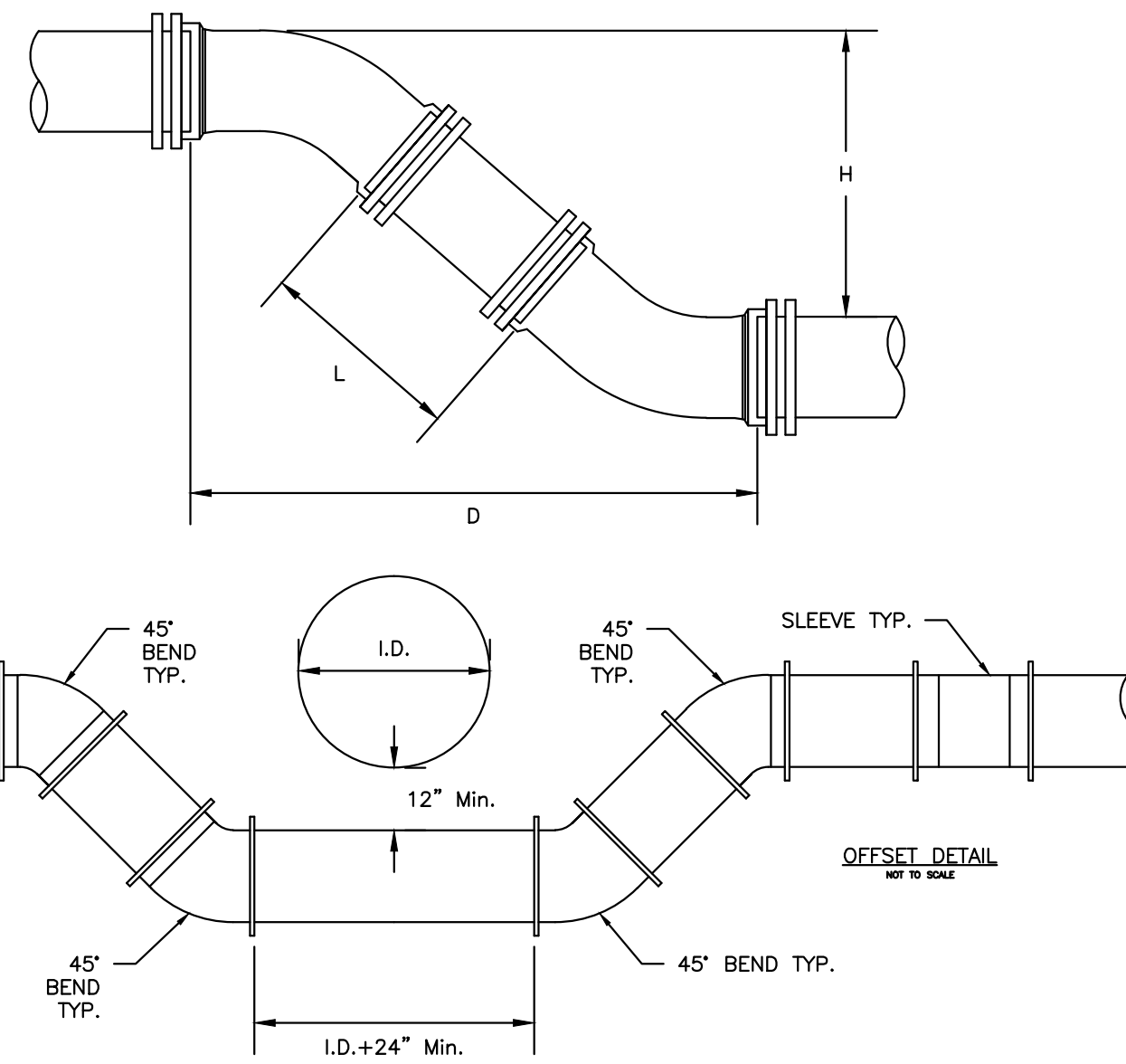
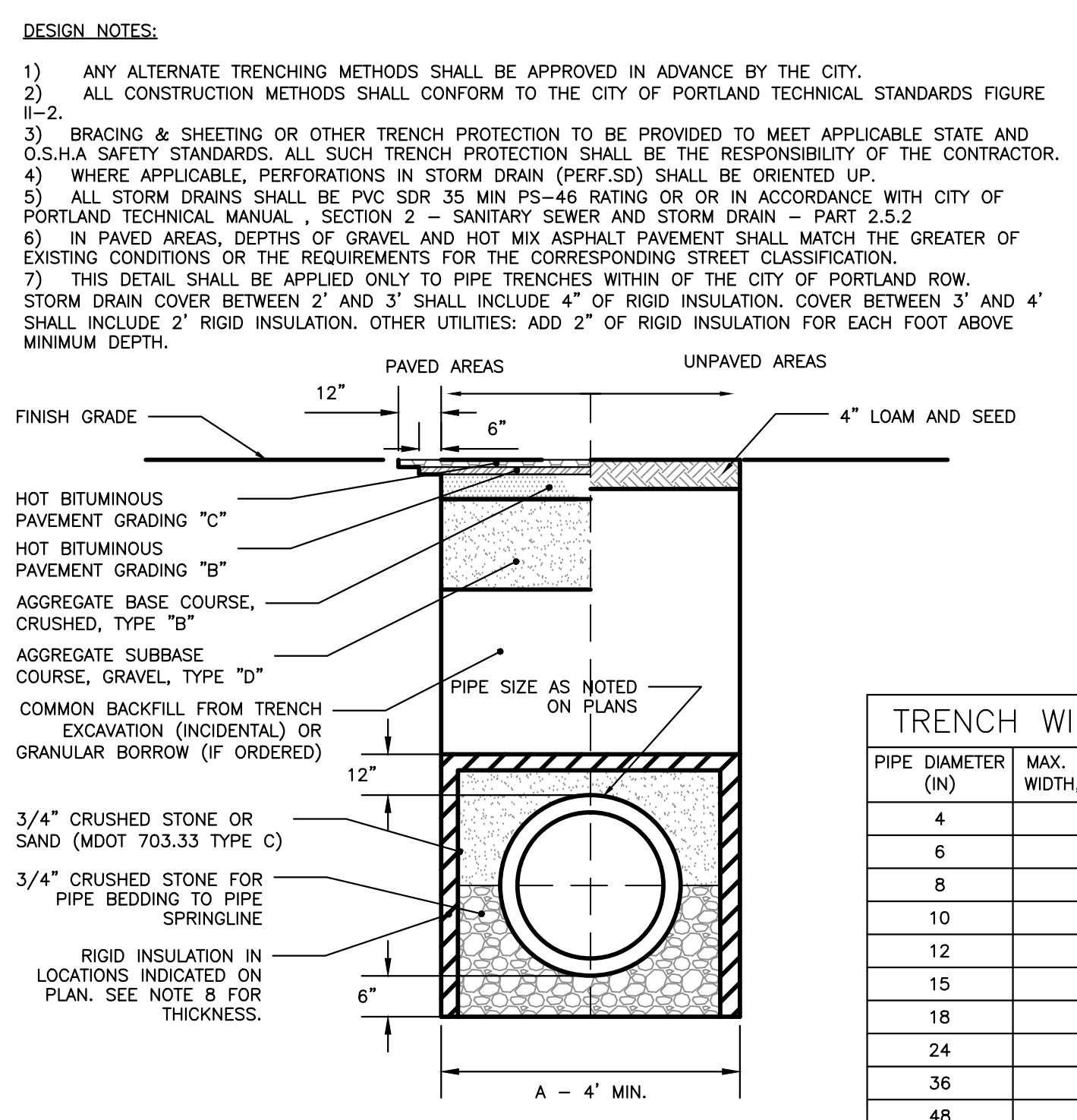
UTILITY TRENCH - PRIMARY AND SECONDARY POWER, TELEPHONE, AND CABLE



SCHEDULE OF MATERIALS

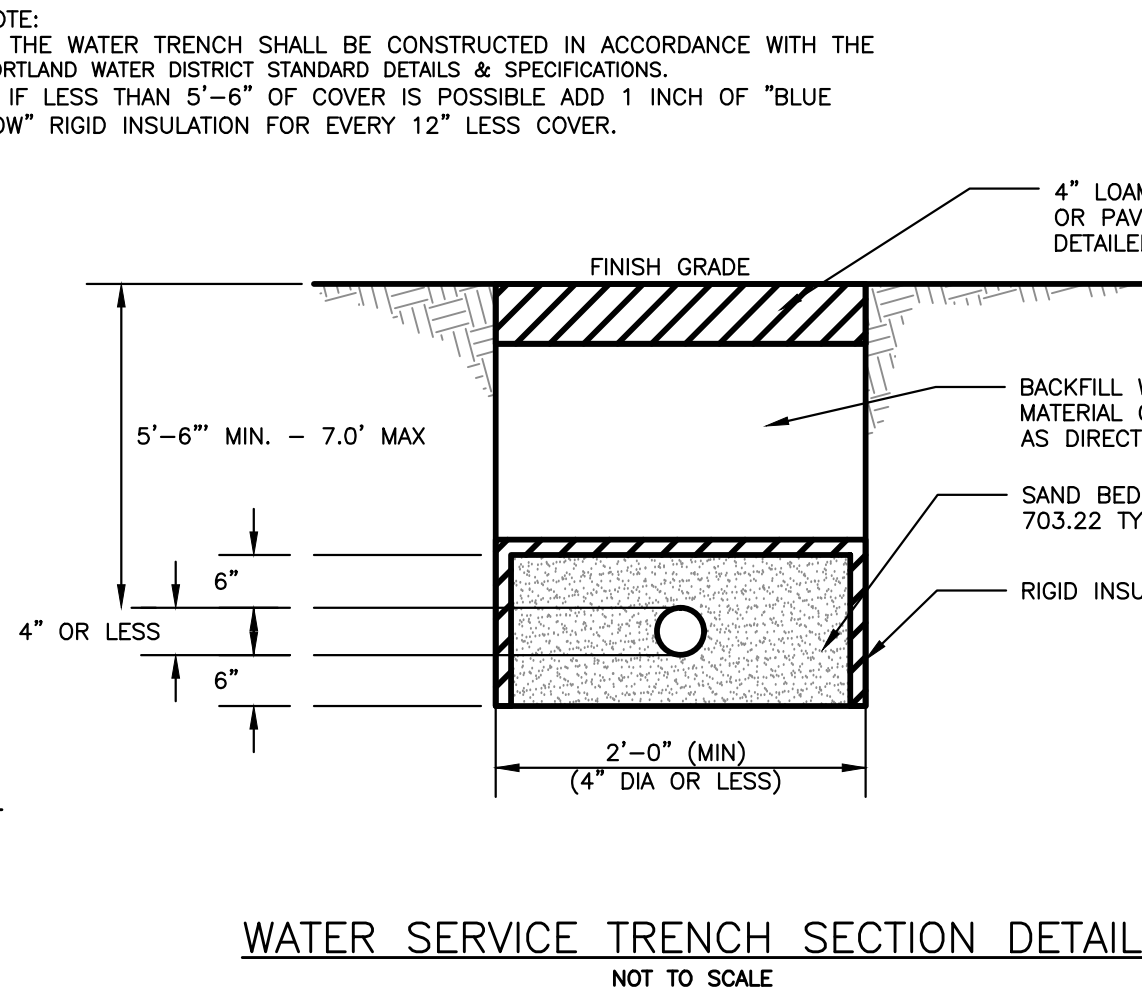
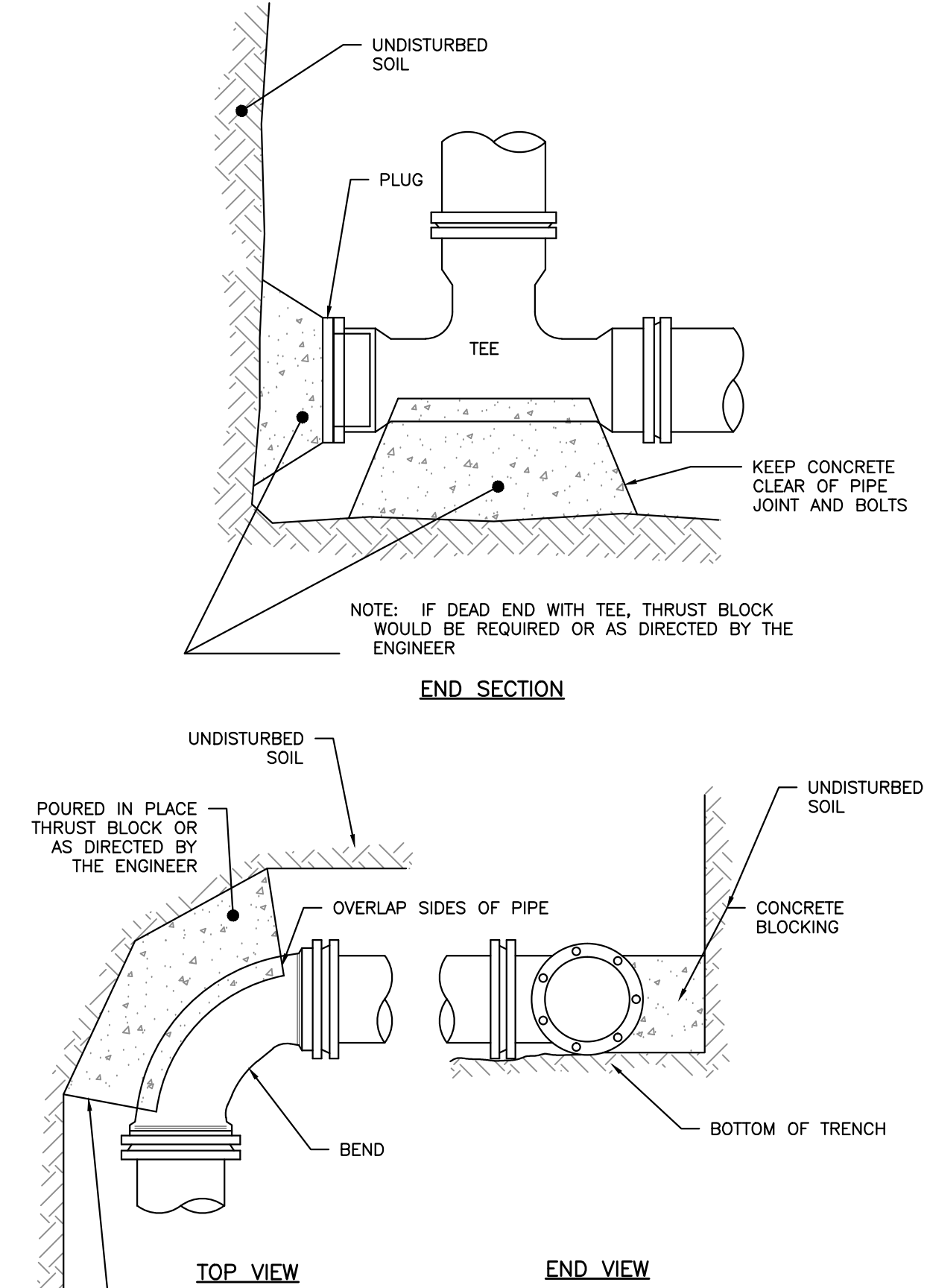
TYPE OF PIPE	GRANULAR BEDDING	SELECT BACKFILL
CMP DUCTILE IRON RCP	MDOT 703.22 TYPE B L/D BACKFILL	MDOT 703.22 TYPE B L/D BACKFILL
PVC/HDPE	MDOT 703.22 TYPE C 3/4" CRUSHED STONE	MDOT 703.22 TYPE B L/D BACKFILL
CMP	MDOT 703.22 TYPE C 3/4" CRUSHED STONE	MDOT 703.22 TYPE C 3/4" CRUSHED STONE

- NOTE:
- BRACING AND SHEETING OR OTHER TRENCH PROTECTION TO BE PROVIDED TO MEET APPLICABLE STATE AND O.S.H.A. SAFETY STANDARDS. ALL SUCH TRENCH PROTECTION TO BE THE RESPONSIBILITY OF THE CONTRACTOR.
  - STORM DRAIN COVER BETWEEN 2' AND 3' SHALL INCLUDE 4" OF RIGID INSULATION. COVER BETWEEN 3' AND 4' SHALL INCLUDE 2" RIGID INSULATION. OTHER UTILITIES: ADD 2" OF RIGID INSULATION FOR EACH FOOT ABOVE MINIMUM DEPTH.
  - INSTALL WARNING TAPE DIRECTLY ABOVE UTILITIES AT THE TOP OF SUBGRADE.
  - MINIMUM COVER
    - 2'-0" - STORM DRAIN
    - 5'-0" - SEWER
  - NO TREES SHALL BE PLANTED WITHIN 5' OF A SEWER PIPE OR SERVICE
  - THIS DETAIL SHALL BE APPLIED ONLY TO DRAINAGE PIPE TRENCHES OUTSIDE OF THE CITY OF PORTLAND ROW.



H	6" PIPE		8" PIPE		12" PIPE	
	D	L	D	L	D	L
12"	1' 6-1/2"	0' 10-1/2"	1' 7-1/2"	0' 9-1/2"	1' 11-1/2"	0' 5-1/2"
13"	1' 7-1/2"	0' 11-7/8"	1' 8-1/2"	0' 10-7/8"	2' 0-1/2"	0' 6-7/8"
14"	1' 8-1/2"	1' 1-5/16"	1' 9-1/2"	1' 0-5/16"	2' 1-1/2"	0' 8-5/16"
15"	1' 9-1/2"	1' 2-11/16"	1' 10-1/2"	1' 1-11/16"	2' 2-1/2"	0' 9-11/16"
16"	1' 10-1/2"	1' 4-1/8"	1' 11-1/2"	1' 3-1/8"	2' 3-1/2"	0' 11-1/8"
17"	1' 11-1/2"	1' 5-9/16"	2' 0-1/2"	1' 4-9/16"	2' 4-1/2"	1' 0-9/16"
18"	2' 0-1/2"	1' 6-15/16"	2' 1-1/2"	1' 5-15/16"	2' 5-1/2"	1' 1-15/16"
19"	2' 1-1/2"	1' 8-3/8"	2' 2-1/2"	1' 7-3/8"	2' 6-1/2"	1' 3-3/8"
20"	2' 2-1/2"	1' 9-13/16"	2' 3-1/2"	1' 8-13/16"	2' 7-1/2"	1' 4-13/16"
21"	2' 3-1/2"	1' 11-3/16"	2' 4-1/2"	1' 10-3/16"	2' 8-1/2"	1' 6-5/16"
22"	2' 4-1/2"	2' 0-5/8"	2' 5-1/2"	1' 11-5/8"	2' 9-1/2"	1' 7-5/8"
23"	2' 5-1/2"	2' 2"	2' 6-1/2"	2' 1"	2' 10-1/2"	1' 9"
24"	2' 6-1/2"	2' 3-7/16"	2' 7-1/2"	2' 2-7/16"	2' 11-1/2"	1' 10-7/16"
25"	2' 7-1/2"	2' 4-7/8"	2' 8-1/2"	2' 3-7/8"	3' 0-1/2"	1' 11-7/8"
26"	2' 8-1/2"	2' 6-1/4"	2' 9-1/2"	2' 5-1/4"	3' 1-1/2"	2' 1-1/4"
27"	2' 9-1/2"	2' 7-11/16"	2' 10-1/2"	2' 6-11/16"	3' 2-1/2"	2' 2-11/16"
28"	2' 10-1/2"	2' 9-1/8"	2' 11-1/2"	2' 8-1/8"	3' 3-1/2"	2' 4-1/8"
29"	2' 11-1/2"	2' 10-1/2"	3' 0-1/2"	2' 9-1/2"	3' 4-1/2"	2' 5-1/2"
30"	3' 0-1/2"	2' 11-15/16"	3' 1-1/2"	2' 10-15/16"	3' 5-1/2"	2' 6-15/16"
31"	3' 1-1/2"	3' 1-5/16"	3' 2-1/2"	3' 0-5/16"	3' 6-1/2"	2' 8-5/16"
32"	3' 2-1/2"	3' 2-3/4"	3' 3-1/2"	3' 1-3/4"	3' 7-1/2"	2' 9-3/4"
33"	3' 3-1/2"	3' 4-3/16"	3' 4-1/2"	3' 3-3/16"	3' 8-1/2"	2' 11-3/16"
34"	3' 4-1/2"	3' 5-9/16"	3' 5-1/2"	3' 4-9/16"	3' 9-1/2"	3' 0-9/16"
35"	3' 5-1/2"	3' 7"	3' 6-1/2"	3' 6"	3' 10-1/2"	3' 2"
36"	3' 6-1/2"	3' 8-3/16"	3' 7-1/2"	3' 7-7/16"	3' 11-1/2"	3' 3-7/16"
37"	3' 7-1/2"	3' 9-13/16"	3' 8-1/2"	3' 8-13/16"	4' 0-1/2"	3' 4-13/16"
38"	3' 8-1/2"	3' 11-1/4"	3' 9-1/2"	3' 10-1/4"	4' 1-1/2"	3' 6-1/4"
39"	3' 9-1/2"	4' 0-11/16"	3' 10-1/2"	3' 11-11/16"	4' 2-1/2"	3' 7-11/16"
40"	3' 10-1/2"	4' 2-1/16"	3' 11-1/2"	4' 1-1/16"	4' 3-1/2"	3' 9-1/16"
41"	3' 11-1/2"	4' 3-1/2"	4' 0-1/2"	4' 2-1/2"	4' 4-1/2"	3' 10-1/2"
42"	4' 0-1/2"	4' 4-7/8"	4' 1-1/2"	4' 3-7/8"	4' 5-1/2"	3' 11-7/8"
43"	4' 1-1/2"	4' 6-5/16"	4' 2-1/2"	4' 5-5/16"	4' 6-1/2"	4' 1-5/16"
44"	4' 2-1/2"	4' 7-3/4"	4' 3-1/2"	4' 6-3/4"	4' 7-1/2"	4' 2-3/4"
45"	4' 3-1/2"	4' 9-1/8"	4' 4-1/2"	4' 8-1/8"	4' 8-1/2"	4' 4-1/8"
46"	4' 4-1/2"	4' 10-9/16"	4' 5-1/2"	4' 9-9/16"	4' 9-1/2"	4' 5-9/16"
47"	4' 5-1/2"	4' 11-15/16"	4' 6-1/2"	4' 10-15/16"	4' 10-1/2"	4' 6-15/16"
48"	4' 6-1/2"	5' 1-3/8"	4' 7-1/2"	5' 0-3/8"	4' 11-1/2"	4' 8-3/8"
49"	4' 7-1/2"	5' 2-13/16"	4' 8-1/2"	5' 1-13/16"	5' 0-1/2"	4' 9-13/16"
50"	4' 8-1/2"	5' 4-3/16"	4' 9-1/2"	5' 3-3/16"	5' 1-1/2"	4' 11-3/16"
51"	4' 9-1/2"	5' 5-5/8"	4' 10-1/2"	5' 4-5/8"	5' 2-1/2"	5' 0-5/8"
52"	4' 10-1/2"	5' 7-1/8"	4' 11-1/2"	5' 6-1/8"	5' 3-1/2"	5' 2-1/8"
53"	4' 11-1/2"	5' 8-7/16"	5' 0-1/2"	5' 7-7/16"	5' 4-1/2"	5' 4-7/16"
54"	5' 0-1/2"	5' 9-7/8"	5' 1-1/2"	5' 8-7/8"	5' 5-1/2"	5' 4-7/8"
55"	5' 1-1/2"	5' 11-5/16"	5' 2-1/2"	5' 10-5/16"	5' 6-1/2"	5' 6-5/16"

NOTE: DIMENSIONS APPLICABLE FOR SIGMA COMPACT BENDS. FOR TYLER COMPACT BENDS, ADD 1/2" TO "D" DIMENSION AND SUBTRACT 1/2" FROM "L" DIMENSION. FOR OTHER FITTINGS REFER TO MANUFACTURER'S RECOMMENDATIONS.



- NOTE:
- THE WATER TRENCH SHALL BE CONSTRUCTED IN ACCORDANCE WITH THE PORTLAND WATER DISTRICT STANDARD DETAILS & SPECIFICATIONS.
  - IF LESS THAN 5'-6" OF COVER IS POSSIBLE ADD 1 INCH OF "BLUE DOW" RIGID INSULATION FOR EVERY 12" LESS COVER.

ISSUED FOR PRELIM. APPLICATION

DATE 7/30/15

REVISION

REV. DATE

UTILITY DETAILS

PROJECT NAME: 667 CONGRESS STREET REDEVELOPMENT

CLIENT: REDFERN PROPERTIES, LLC.

P.O. BOX 8818 PORTLAND, ME 04104

DRAWING NO. C-42

ACORN ENGINEERING, INC. 11411 WILLIAM SAVAGE RD. DANFORTH (207) 779-2665

FILE: 1060\_DETAILS

DATE: 4/20/2015

JN: 1060

SCALE: NTS

DESIGNED BY: WHS

DRAWN BY: MAC

CHECKED BY: WHS

STATE OF MAINE LICENSED PROFESSIONAL ENGINEER WILLIAM SAVAGE No. 13015

DRAWING NO. C-42