

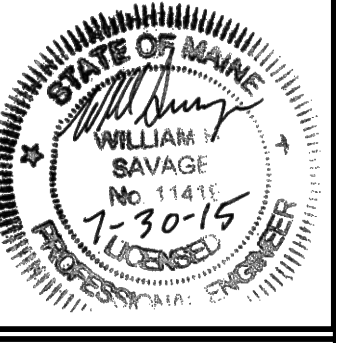
ISSUED FOR	BY
PRELIM. APPLICATION	WHS
	DATE
	7/30/15
REVISION	REV.
	DATE

DRAWING NAME: **SITE DETAILS 2**
PROJECT NAME: **667 CONGRESS STREET REDEVELOPMENT**
CLIENT: **REDFERN PROPERTIES, LLC.**
P.O. BOX 8816 PORTLAND, ME 04104

A C C O R N
ENGINEERING, INC.

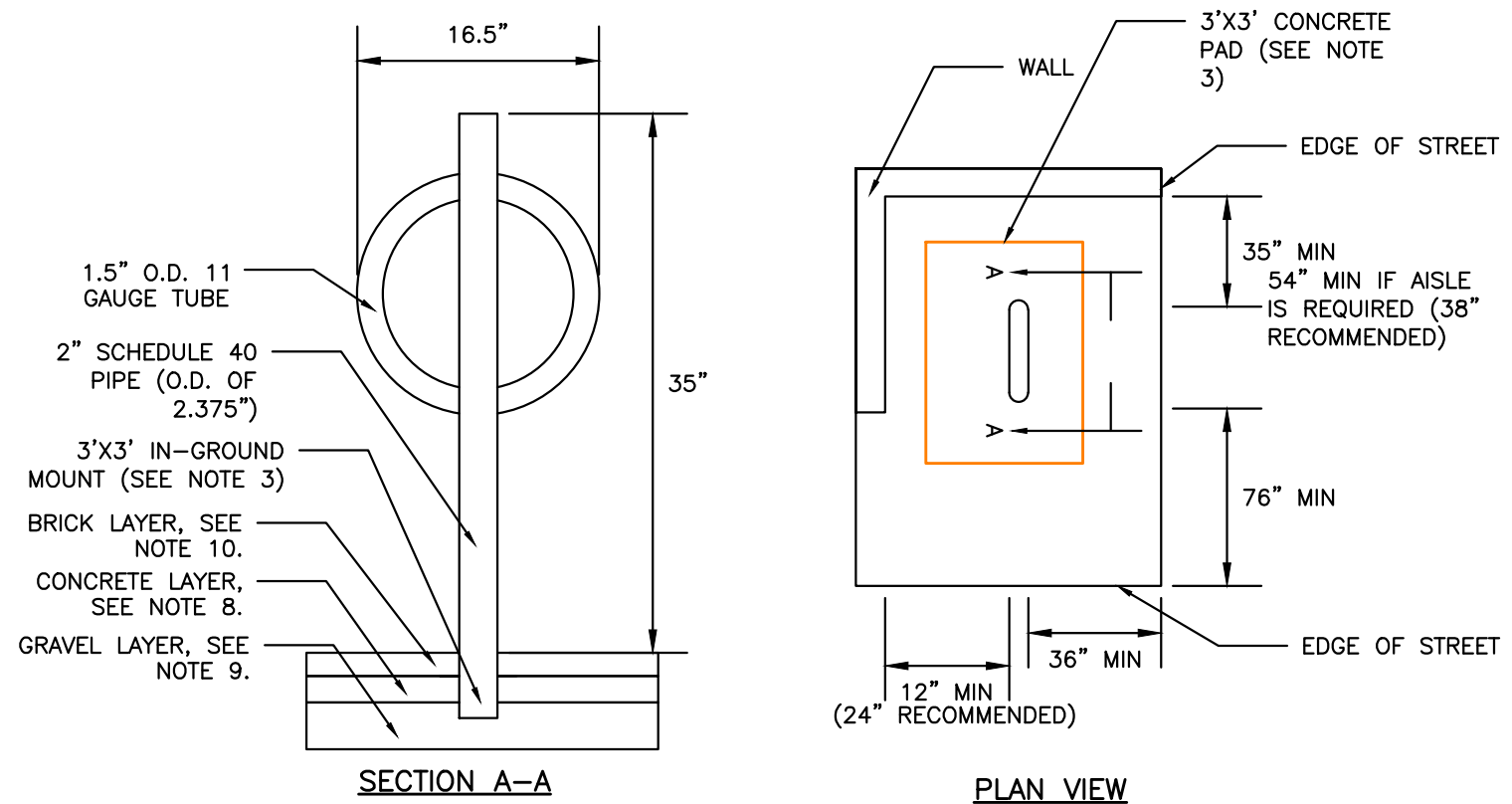
PROFESSIONAL ENGINEER LICENSE NO. 11418
158 DANFORTH (207) 779-2665
ACCORN ENGINEERING, INC., MAINE 04102
THIS PLAN OR SPECIFICATION IS THE PROPERTY OF ACCORN ENGINEERING, INC. AND IS TO BE USED ONLY FOR THE PROJECT AND SITE SPECIFICALLY IDENTIFIED HEREIN. ANY REUSE OR OTHER USE, IN WHOLE OR IN PART, WITHOUT WRITTEN PERMISSION OF ACCORN ENGINEERING, INC. IS PROHIBITED.

FILE:	1060_DETAILS
DATE:	4/20/2015
JN:	1060
SCALE:	NTS
DESIGNED BY:	WHS
DRAWN BY:	MAG
CHECKED BY:	WHS



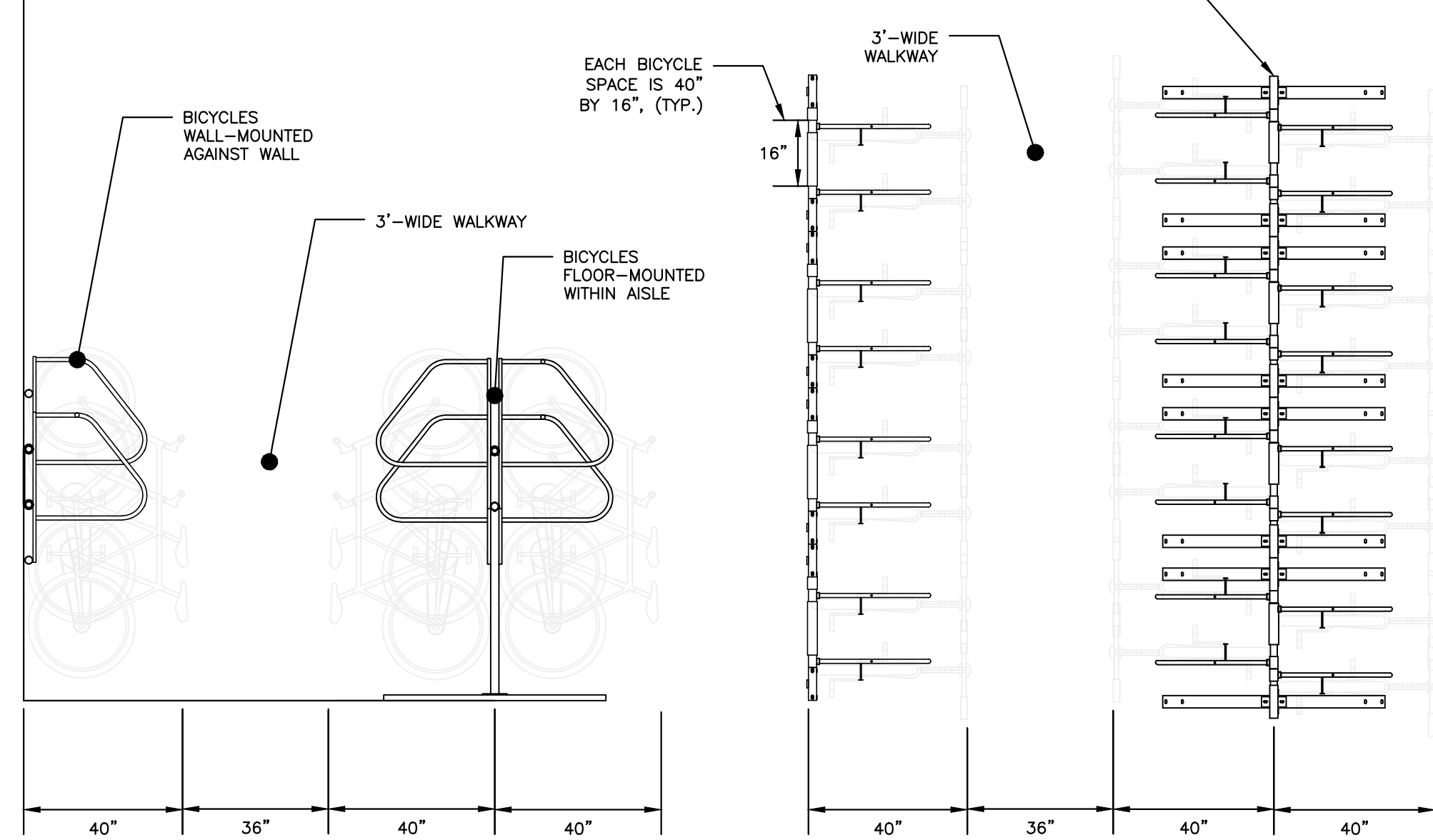
DRAWING NO. **C-41**

- NOTES:**
- BICYCLE RACK SHALL HAVE CAPACITY FOR TWO BICYCLES.
 - BICYCLE RACK PARTS SHALL BE OF UNIFORM COLOR AND SHALL BE FINISHED IN ACCORDANCE WITH PRODUCT SPECIFICATION.
 - BICYCLE RACK SHALL BE INSTALLED IN ACCORDANCE WITH MANUFACTURER'S MOST RECENT INSTALLATION RECOMMENDATIONS, AND SHALL BE INSTALLED WITH AN IN-GROUND MOUNT UNLESS OTHERWISE APPROVED BY ENGINEER.
 - BICYCLE RACK SHALL BE "DERO BIKE HITCH", AS MANUFACTURED BY DERO BIKE RACKS.
 - MINIMUM OFFSETS SHOWN, MANUFACTURER'S RECOMMENDED OFFSETS SHALL BE ENFORCED WHERE POSSIBLE.
 - MINIMUM DISTANCE BETWEEN BICYCLE RACKS SHALL BE 24". RECOMMENDED DISTANCE BETWEEN BICYCLE RACKS SHALL BE 38".
 - ALL OFFSETS ARE FROM OUTSIDE EDGES OF ITEMS.
 - CONCRETE SHALL BE 4000 PSI @28 DAYS. BOTTOM OF CONCRETE SHALL BE AT TOP OF SIDEWALK GRAVEL ELEVATION. DEPTH VARIES APPROX. 4"-7".
 - GRAVEL LAYER SHALL BE INSTALLED IN ACCORDANCE WITH BRICK SIDEWALK WITH BITUMINOUS BASE DETAIL, AND SHALL BE MAINDOT 703.06 TYPE B.
 - TOP OF BRICK LAYER SHALL BE AT SAME ELEVATION IN ACCORDANCE WITH BRICK SIDEWALK DETAIL.

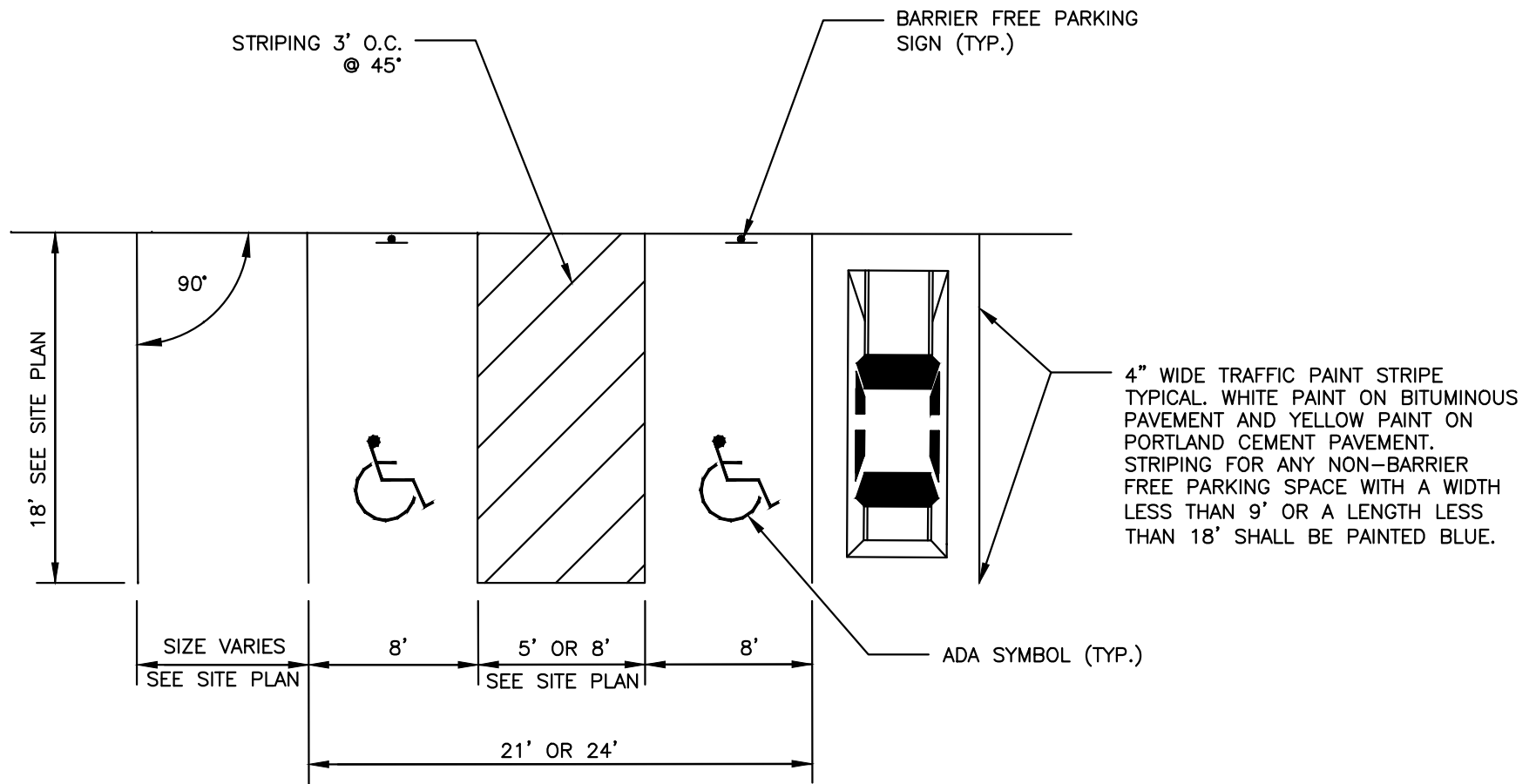


BICYCLE RACK DETAIL
NOT TO SCALE

- NOTES:**
- FINAL LOCATION OF INTERIOR BICYCLE RACKS SHALL CONFORM TO ALL ARCHITECTURAL DRAWINGS. CONTRACTOR TO NOTIFY ENGINEER AND ARCHITECT WITH ANY DISCREPANCIES.
 - BICYCLE MOUNT SHALL BE ULTRA SPACE SAVER AS MANUFACTURED BY DERO, OR APPROVED EQUAL.
 - BICYCLES SHALL BE WALL MOUNTED OR FLOOR MOUNTED IN ACCORDANCE WITH MANUFACTURER'S RECOMMENDATIONS.



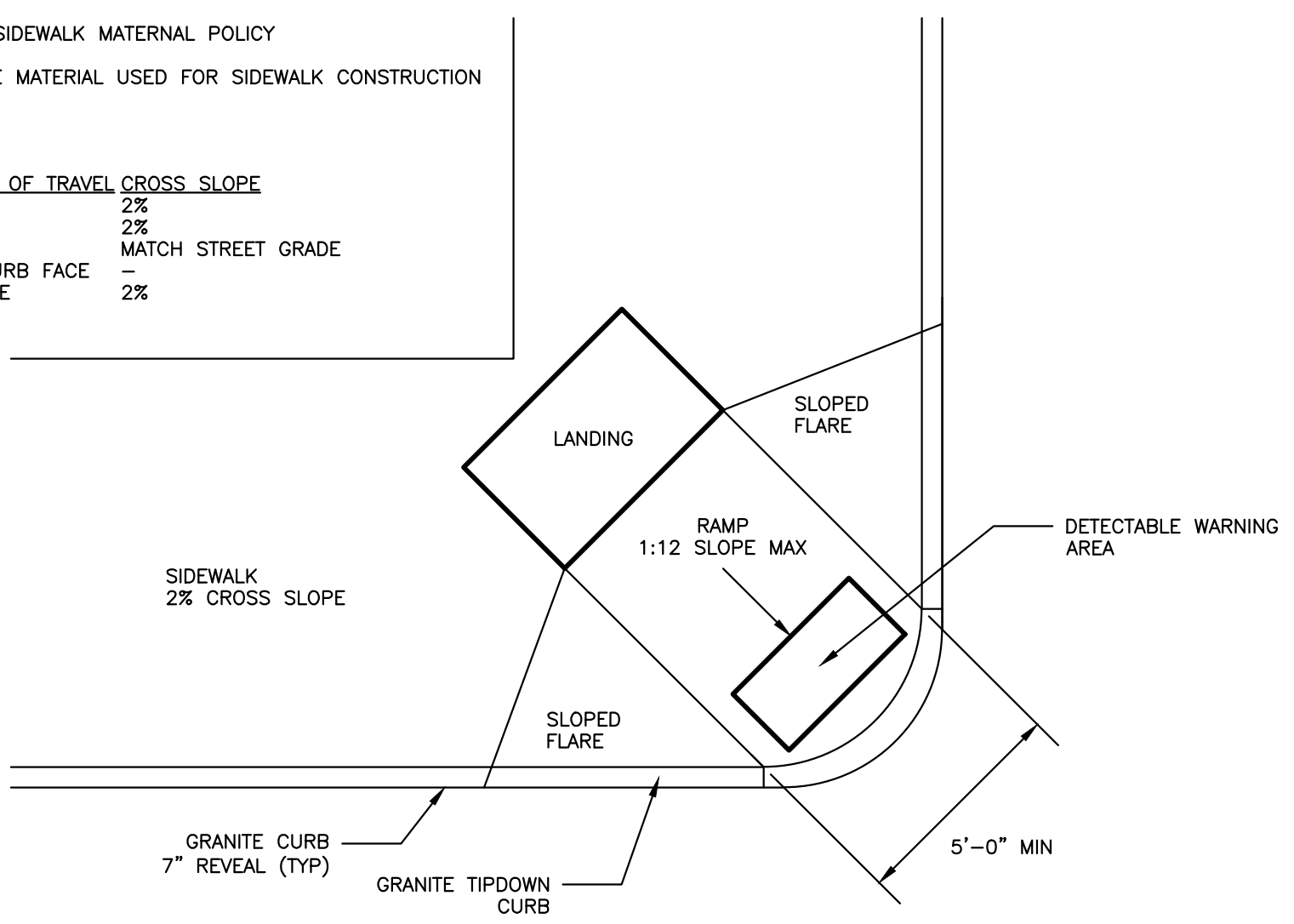
INTERIOR BICYCLE LAYOUT
NOT TO SCALE



PARKING SPACE DIMENSIONS
NOT TO SCALE

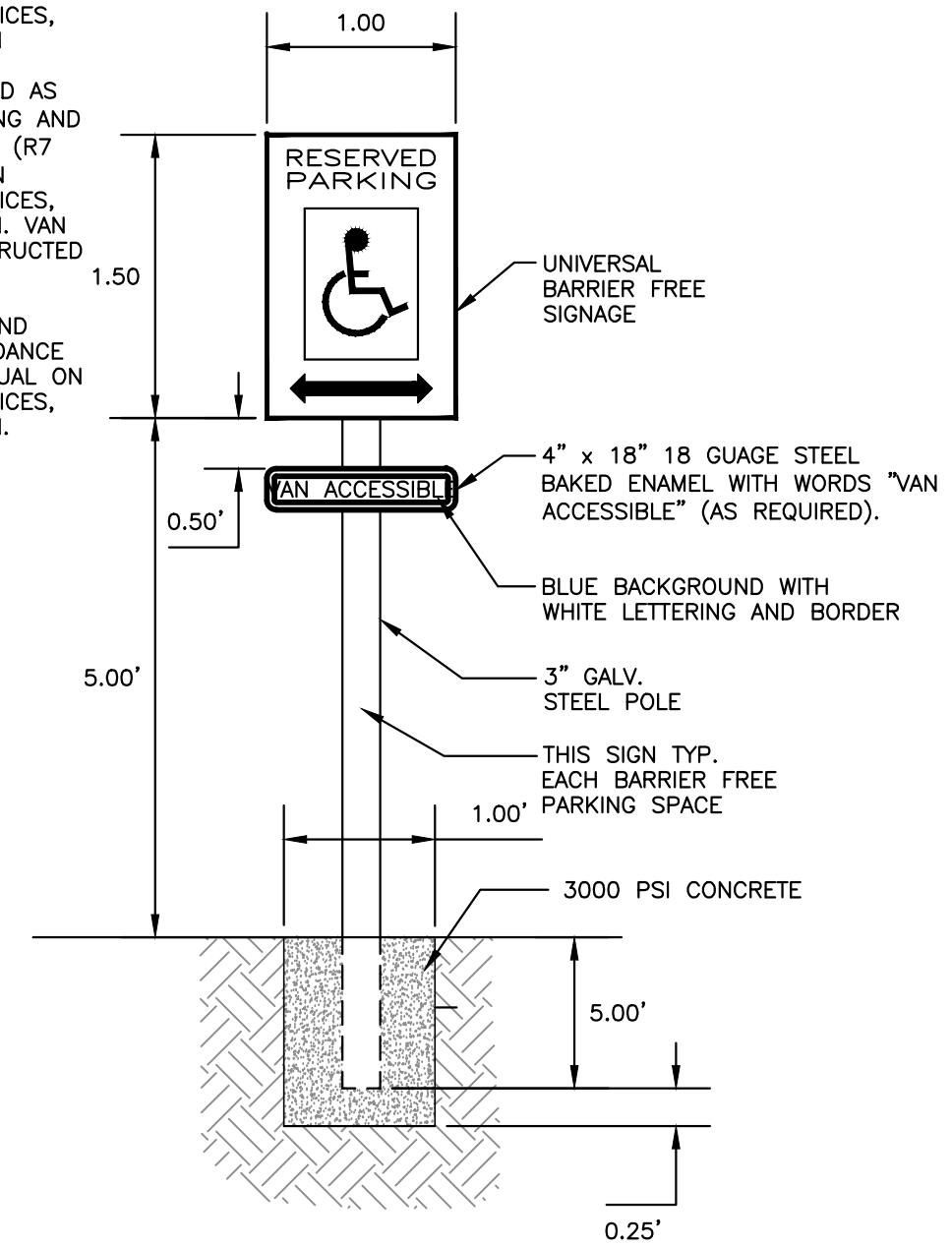
- NOTES:**
- ALL RAMP SHALL COMPLY WITH ADA STANDARDS
 - LANDING AREA MAY BE REQUIRED BASED ON SIDEWALK DIMENSIONS
 - GRANITE CURB ADJACENT TO RAMP SHALL BE FLUSH WITH STREET
 - SIDEWALK MATERIAL SHALL BE PER CITY SIDEWALK MATERIAL POLICY
 - FLARED SECTIONS SHOULD MATCH SURFACE MATERIAL USED FOR SIDEWALK CONSTRUCTION
 - 7'-0" FLARE MINIMUM

DESIGN ELEMENT	SLOPE IN DIRECTION OF TRAVEL	CROSS SLOPE
APPROACH	8.33% MAXIMUM	2%
LANDING	2%	2%
RAMP	8.33% MAXIMUM	MATCH STREET GRADE
FLARE	10% MAXIMUM AT CURB FACE	-
SIDEWALK	MATCH STREET GRADE	2%

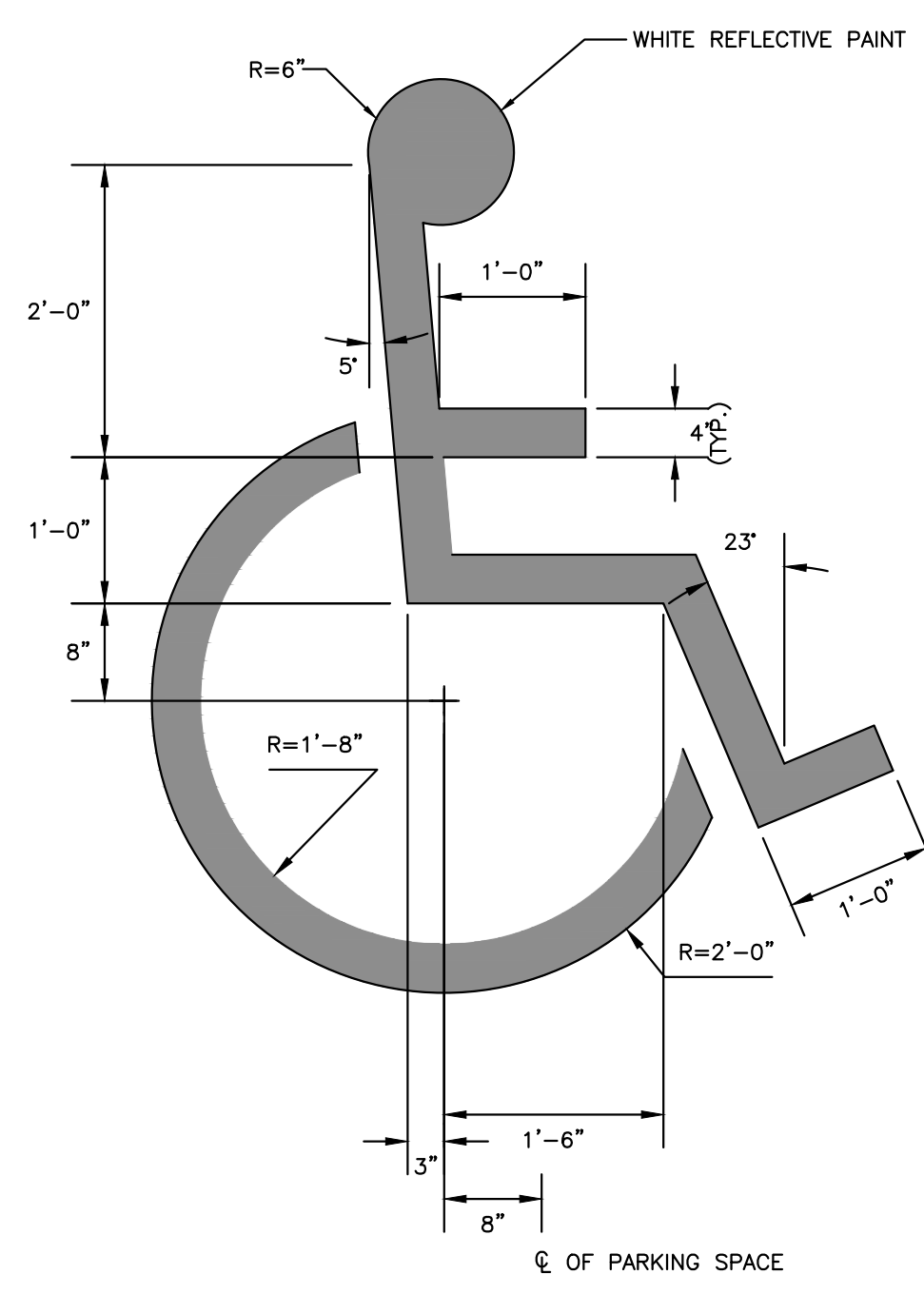


PREFERRED SIDEWALK RAMP LAYOUT AT CORNER INTERSECTION FOR SIDEWALK WITHOUT ESPLANADE
NOT TO SCALE

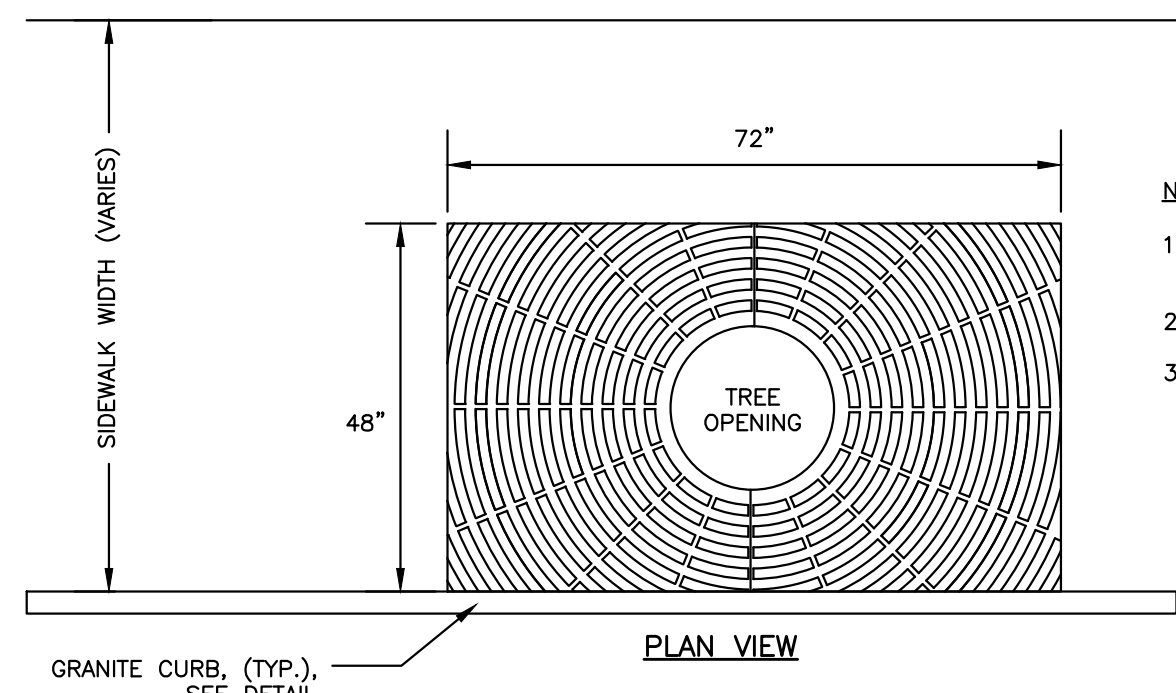
- NOTES:**
- ALL ASPECTS OF RESERVED PARKING SIGN CONSTRUCTION SHALL BE IN ACCORDANCE WITH MANUAL ON UNIFORM TRAFFIC CONTROL DEVICES, 2009 OR MOST RECENT EDITION
 - SIGN SHALL BE CONSTRUCTED AS SIGN R7-8 UNDER THE "PARKING AND STANDING SIGNS AND PLAQUES" (R7 SERIES) WITHIN THE MANUAL ON UNIFORM TRAFFIC CONTROL DEVICES, 2009 OR MOST RECENT EDITION. VAN ACCESSIBILITY SHALL BE CONSTRUCTED AS SIGN R7-8a OR R7-8b.
 - SIGN POST CONSTRUCTION AND MOUNTING SHALL BE IN ACCORDANCE WITH CHAPTER 2A OF THE MANUAL ON UNIFORM TRAFFIC CONTROL DEVICES, 2009 OR MOST RECENT EDITION.



BARRIER FREE PARKING SIGN
NOT TO SCALE

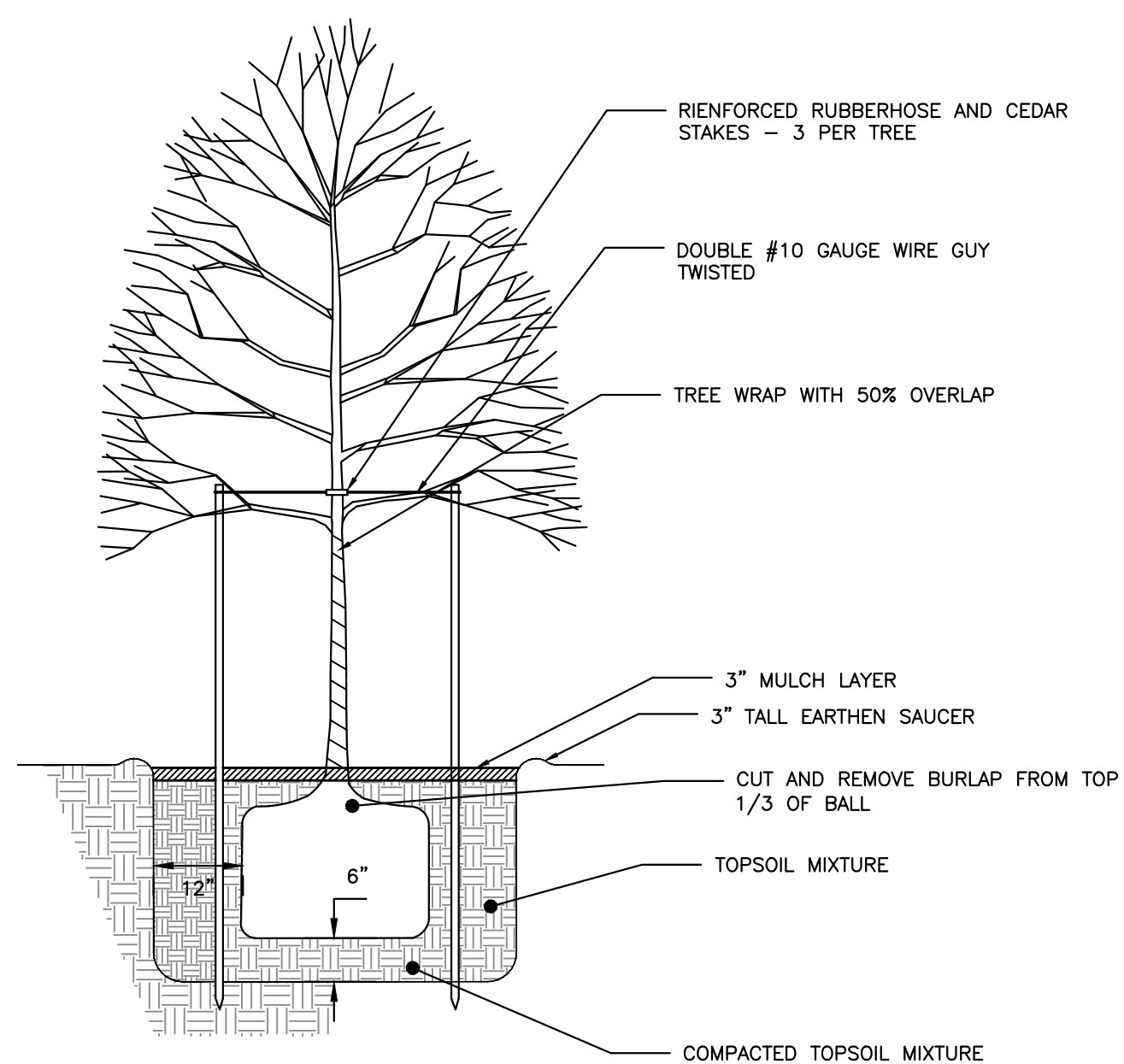


INTERNATIONAL BARRIER FREE SYMBOL
NOT TO SCALE



EXPANDABLE TREE GRATE NEENAH MODEL R-8811
NOT TO SCALE

- NOTES:**
- 16" EXPANDABLE TREE OPENING; .375" SLOT OPENINGS.
 - SIDEWALK MATERIAL PER PLAN.
 - WHEN INSTALLED IN A BRICK SIDEWALK, GRATE REQUIRES A FRAME TO BE INSTALLED TO HOLD GRATE IN PLACE. CONTRACTOR TO INSTALL IN ACCORDANCE WITH MANUFACTURER'S INSTALLATION PROCEDURES FOR PAVERS. CONTRACTOR TO SUBMIT INSTALLATION PROCEDURES FOR REVIEW FROM ENGINEER PRIOR TO CONSTRUCTION.



TREE PLANTING DETAIL
NOT TO SCALE

PRELIMINARY: NOT ISSUED FOR CONSTRUCTION