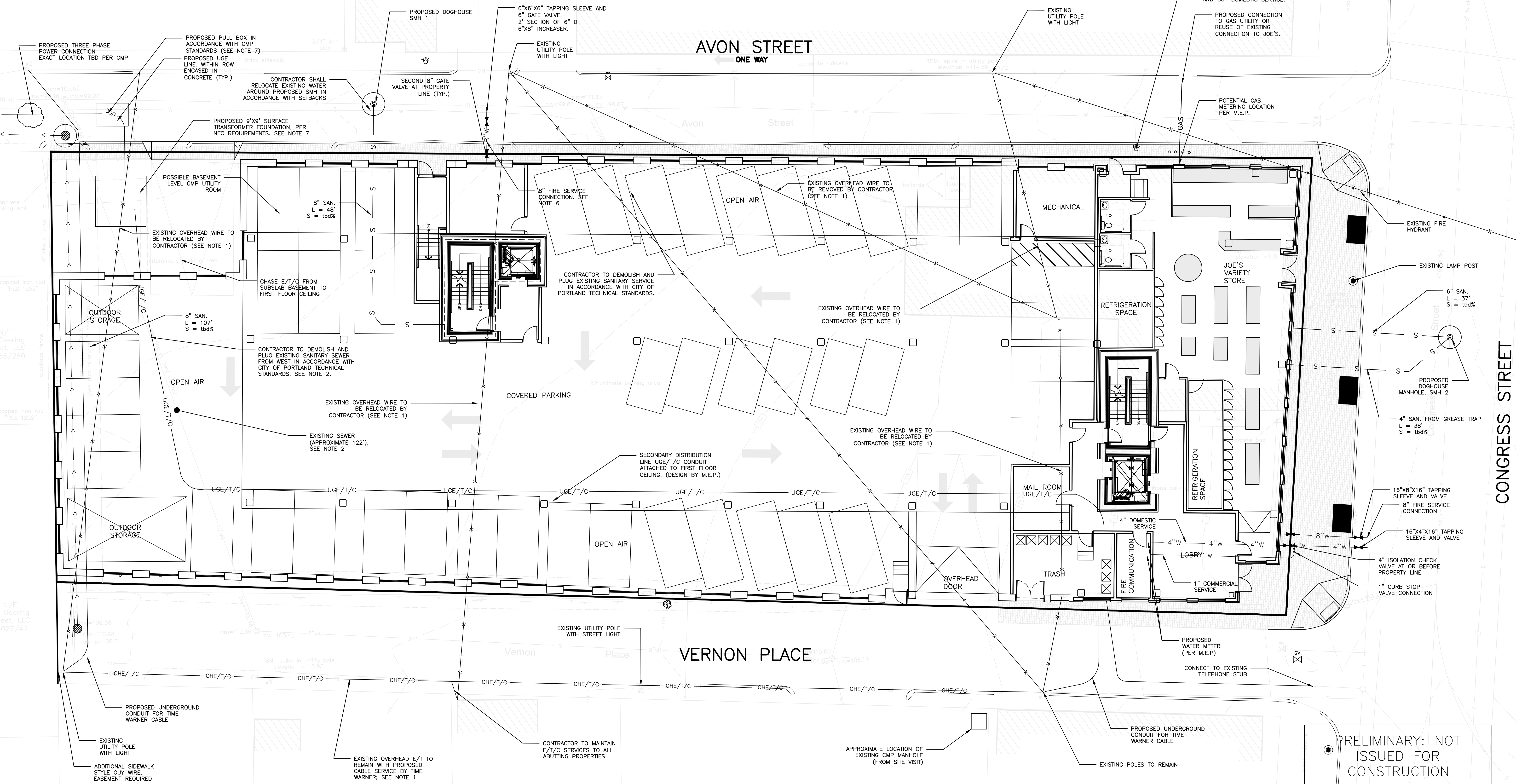
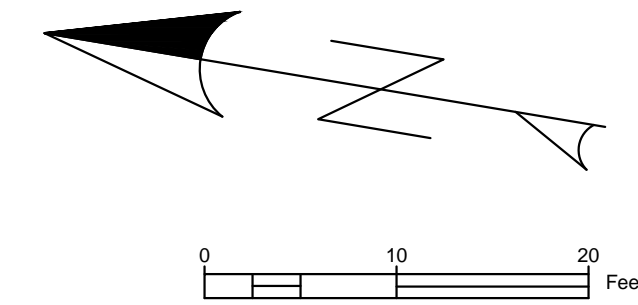


GENERAL NOTES:

- CONTRACTOR SHALL COORDINATE WITH TIME WARNER TO PROVIDE CABLE TO RESIDENCES ON VERNON IN PLACE OF OVERHEAD SERVICE WIRES CROSSING THE PROPOSED DEVELOPMENT. OVERHEAD WIRES SHALL BE REROUTED SUBSURFACE TO THE REAR OF THE PROPERTY TO THE EXISTING POLE AND THEN RUN OVERHEAD ON EXISTING POLES ALONG VERNON PLACE. ADDITIONAL GUY WIRING WITH EASEMENTS WILL BE REQUIRED.
- CONTRACTOR SHALL EITHER FILL ABANDONED SEWER WITHIN THE SITE AND VERNON STREET WITH FLOWABLE FILL OR EXCAVATE AND DISPOSE OF OFFSITE OR COMBINATION.
- CONTRACTOR IS TO BE CAUTIONED THAT CERTAIN LOCATIONS AND/OR ELEVATIONS OF EXISTING UTILITIES HAVE BEEN PROVIDED THROUGH UTILITY COORDINATION OR OTHER OBSERVATIONS. INFORMATION IS NOT TO BE RELIED UPON AS EXACT OR COMPLETE. CONTRACTOR TO FIELD VERIFY AND COORDINATE WITH UTILITY COMPANY AND DIG SAFE NO LESS THAN 72 HOURS PRIOR TO ANY EXCAVATION TO REQUEST EXACT FIELD LOCATION OF ALL UTILITIES. IT SHALL BE THE RESPONSIBILITY OF THE CONTRACTOR TO RELOCATE ALL EXISTING UTILITIES WHICH CONFLICT WITH THE PROPOSED IMPROVEMENTS INDICATED IN THE CONTRACT DOCUMENTS. CONTRACTOR TO NOTIFY ENGINEER OF ANY DIFFERENTIATIONS FROM EXISTING CONDITIONS, INCLUDING UTILITY SURVEY, PRIOR TO ANY CHANGES.
- FOR ALL UTILITIES, ACORN ENGINEERING DESIGN LIMITS EXTEND TO OUTSIDE WALL OF BUILDING. METERING OF UTILITIES TO BE COMPLETED BY M.E.P. UNLESS SPECIFIED OTHERWISE.

- SEWER: SEWER UTILITIES TO BE CONSTRUCTED IN ACCORDANCE WITH CITY OF PORTLAND TECHNICAL STANDARDS. WASTE FROM KITCHEN OF PROPOSED JOE'S SMOKE SHOP SHALL CONVEY WASTE TO A GREASE TRAP. M.E.P. TO PLACE VALVE FOR BACKFLOW PREVENTION INSIDE OF BUILDING FOR EACH SEWER CONNECTION. CONTACT ENGINEER IF FIELD CONDITIONS FROM INVERT VARY FROM DESIGN.
- WATER UTILITIES: 4" AND 8" WATER PIPE SHALL BE DUCTILE IRON PIPE UNLESS OTHERWISE APPROVED. FINAL PIPE SIZING TO BE PROVIDED BY MEP ENGINEER. INTERNAL METERING, BACKFLOW PREVENTION (PER PWD, A TESTABLE DOUBLE CHECK VALVE ASSEMBLY WILL BE REQUIRED AT THE BUILDING ENTRANCE), AND PRESSURE REDUCERS, IF REQUIRED, TO BE COMPLETED BY M.E.P. ENGINEER. DOMESTIC WATER PIPE SIZES WILL DETERMINE THE FINAL WATER METERING OPTIONS. METER MAY BE SMALLER THAN THE DIAMETER OF THE WATER MAIN. WATER METERING, PRESSURE REDUCER AND BACKFLOW PREVENTION TO BE IN ACCORDANCE WITH THE PORTLAND WATER DISTRICT STANDARDS.
- ELECTRIC, TELEPHONE, AND COMMUNICATIONS UTILITIES: DESIGN TO BE FINALIZED BY M.E.P. ENGINEER. ELECTRICAL LOAD TO BE DETERMINED BY M.E.P. ENGINEER. METER LOCATION BY M.E.P. ALL ELECTRIC CONSTRUCTION SHALL CONFORM TO CMP GUIDEBOOK OF STANDARD REQUIREMENTS, MOST RECENT EDITION. UGE/T/C AND UGE WITHIN CITY OF PORTLAND R.O.W. SHALL BE ENCASED IN CONCRETE. PULL BOXES AND PEDESTAL LOCATIONS TO BE DETERMINED BY FAIRPOINT AND TIME WARNER PRIOR TO CONSTRUCTION. CONTRACTOR TO COORDINATE.
- GAS UTILITIES: PROJECT GAS LOAD AND INTERNAL GAS UTILITY DESIGN TO BE FINALIZED BY M.E.P. ENGINEER. GAS METERS TO BE LOCATED BY M.E.P.

SEWER STRUCTURE SCHEDULE				
STRUCTURE	INTERIOR DIAMETER	RIM	INV. IN	INV. OUT
SMH-1	4'			
SMH-2	4'			



ISSUED FOR	BY
PRELIMINARY COORDINATION	WHS
PRICING	7/29/16
	2/24/16
REVISION	REV. DATE
DRAWING NAME: UTILITY PLAN	
PROJECT NAME: 667 CONGRESS STREET REDEVELOPMENT	
CLIENT: REDFERN PROPERTIES, LLC.	
P.O. BOX 8616 PORTLAND, MAINE, 04104	
DRAWING NUMBER: 1060_CONGRESS	
DATE: 4/6/2015	
JUN: 1060	
SCALE: 1"=10'	
DESIGNED BY: MAG	
DRAWN BY: MAG	
CHECKED BY: WHS	
DRAWING NO. C-20	

PRELIMINARY: NOT ISSUED FOR CONSTRUCTION