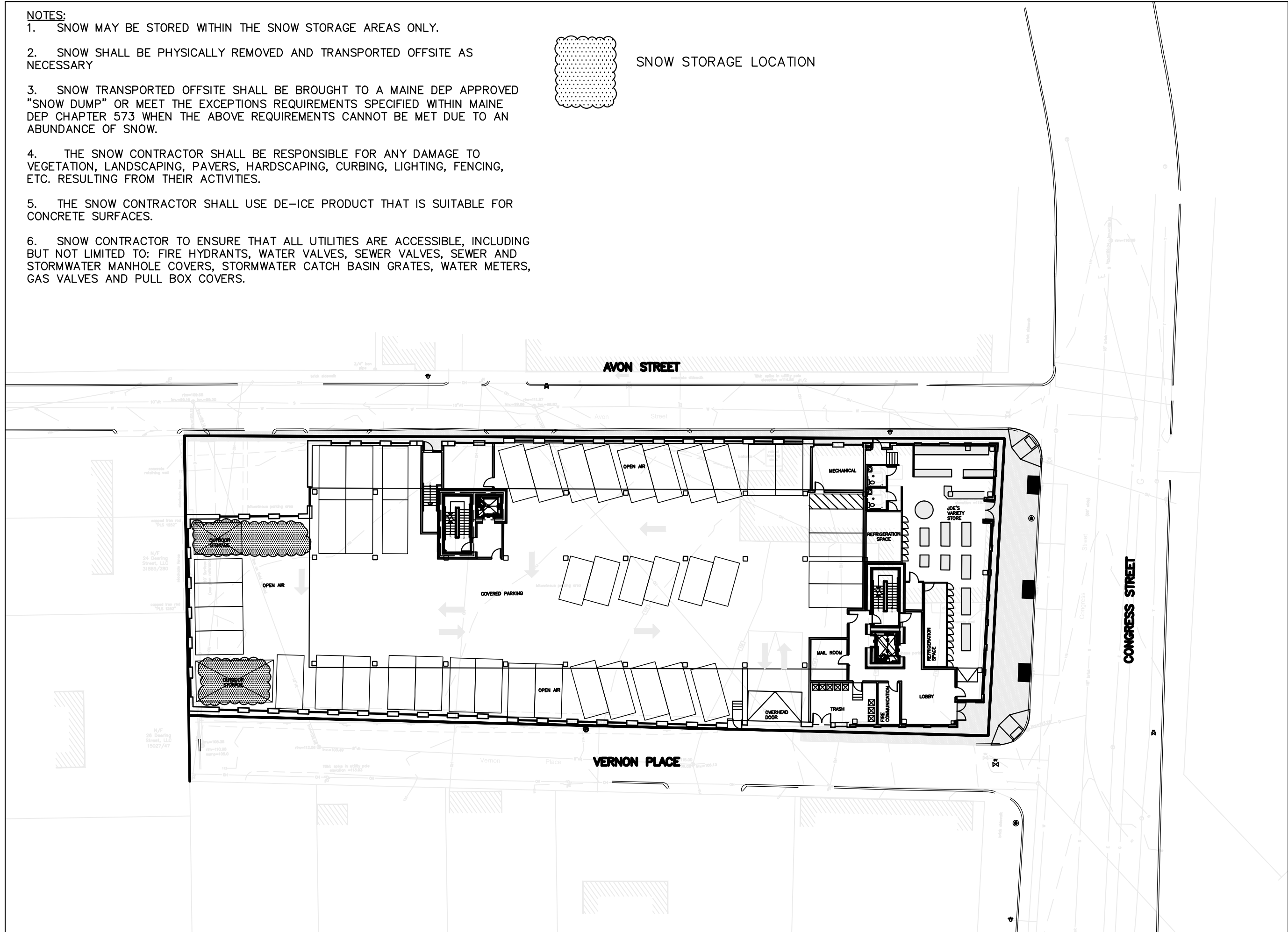


**NOTES:**

1. SNOW MAY BE STORED WITHIN THE SNOW STORAGE AREAS ONLY.
2. SNOW SHALL BE PHYSICALLY REMOVED AND TRANSPORTED OFFSITE AS NECESSARY
3. SNOW TRANSPORTED OFFSITE SHALL BE BROUGHT TO A MAINE DEP APPROVED "SNOW DUMP" OR MEET THE EXCEPTIONS REQUIREMENTS SPECIFIED WITHIN MAINE DEP CHAPTER 573 WHEN THE ABOVE REQUIREMENTS CANNOT BE MET DUE TO AN ABUNDANCE OF SNOW.
4. THE SNOW CONTRACTOR SHALL BE RESPONSIBLE FOR ANY DAMAGE TO VEGETATION, LANDSCAPING, PAVERS, HARDSCAPING, CURBING, LIGHTING, FENCING, ETC. RESULTING FROM THEIR ACTIVITIES.
5. THE SNOW CONTRACTOR SHALL USE DE-ICE PRODUCT THAT IS SUITABLE FOR CONCRETE SURFACES.
6. SNOW CONTRACTOR TO ENSURE THAT ALL UTILITIES ARE ACCESSIBLE, INCLUDING BUT NOT LIMITED TO: FIRE HYDRANTS, WATER VALVES, SEWER VALVES, SEWER AND STORMWATER MANHOLE COVERS, STORMWATER CATCH BASIN GRATES, WATER METERS, GAS VALVES AND PULL BOX COVERS.




SNOW STORAGE LOCATION



ISSUED FOR	BY DATE
REVISION	REV. DATE

DRAWING NAME:	SNOW STORAGE PLAN
PROJECT NAME:	667 CONGRESS ST. REDEVELOPMENT
CLIENT:	REDFERN PROPERTIES, LLC. P.O. BOX 8816, PORTLAND, MAINE 04104



**ACORN ENGINEERING, INC**

P.O. BOX 3372  
PORTLAND, MAINE 04104  
(207) 775-2655

FILE:	1060_CIVIL
DATE:	7/29/15
JN:	1080
SCALE:	1"=20'
DESIGN BY:	WHS
DRAWN BY:	
CHECKED BY:	WHS

THIS PLAN SHALL NOT BE MODIFIED WITHOUT WRITTEN PERMISSION FROM ACORN ENGINEERING, INC. ANY ALTERATIONS, AUTHORIZED OR OTHERWISE, SHALL BE AT THE USER'S SOLE RISK AND WITHOUT LIABILITY TO ACORN ENGINEERING, INC.

DRAWING NO.  
**SNOW**