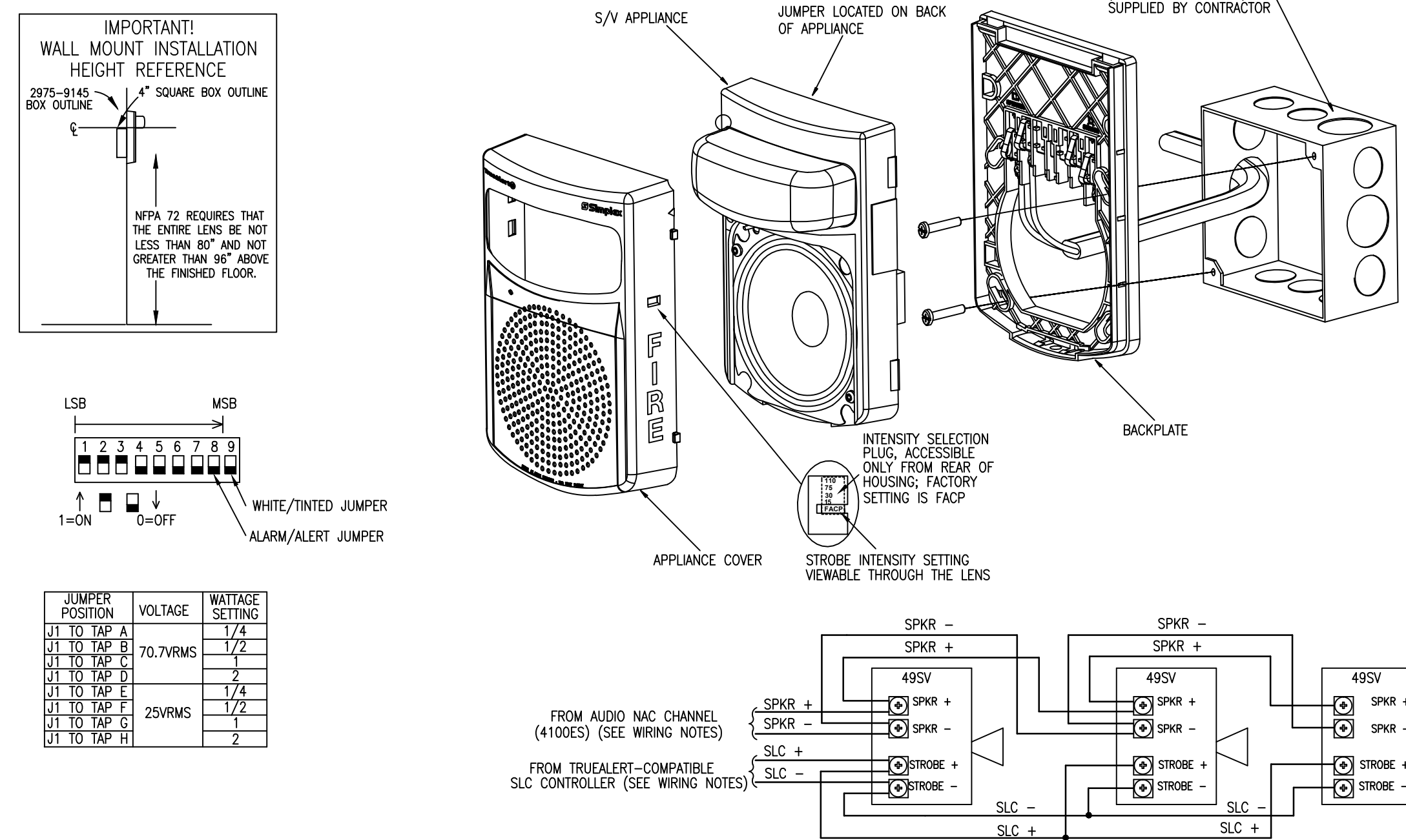
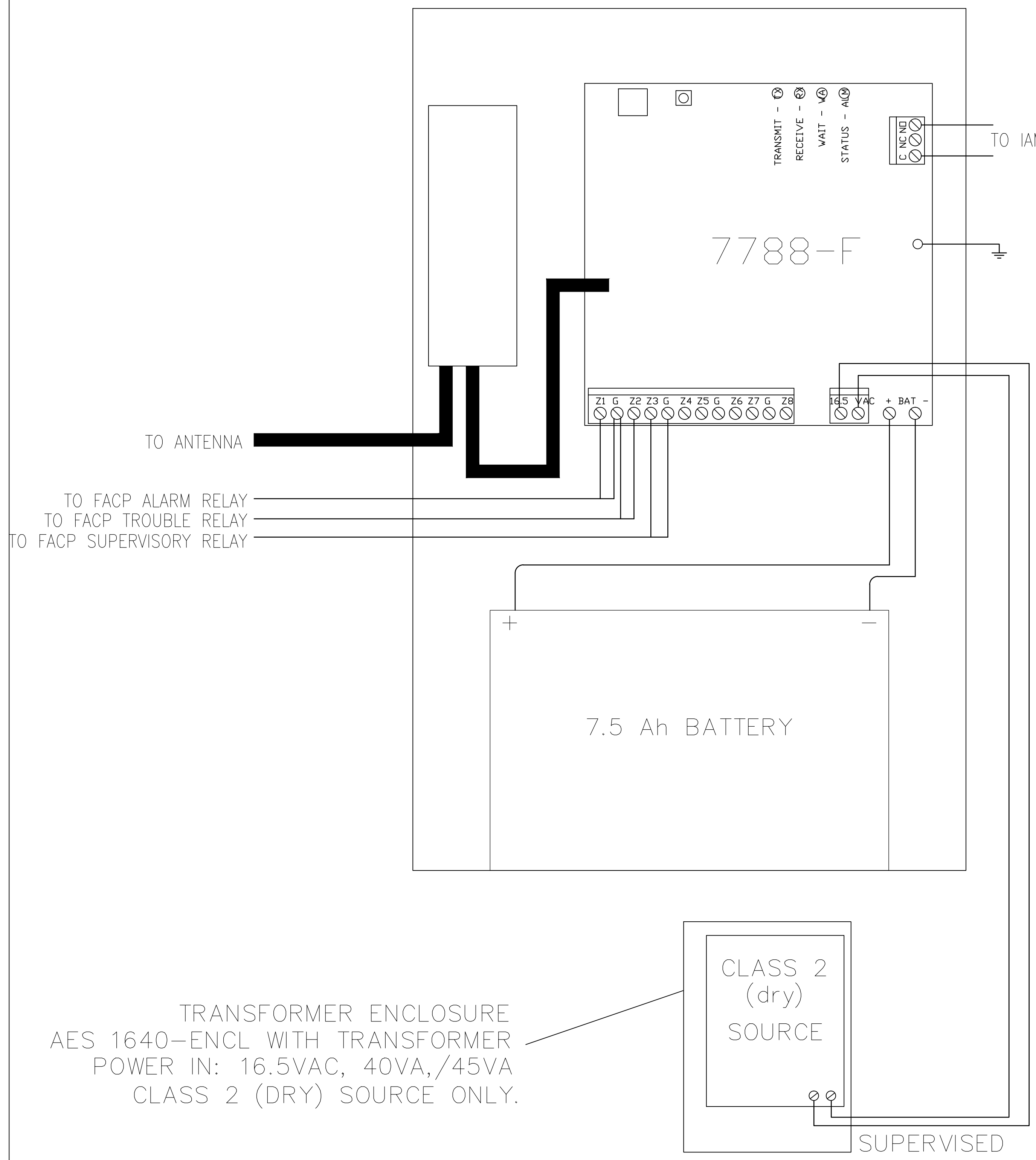


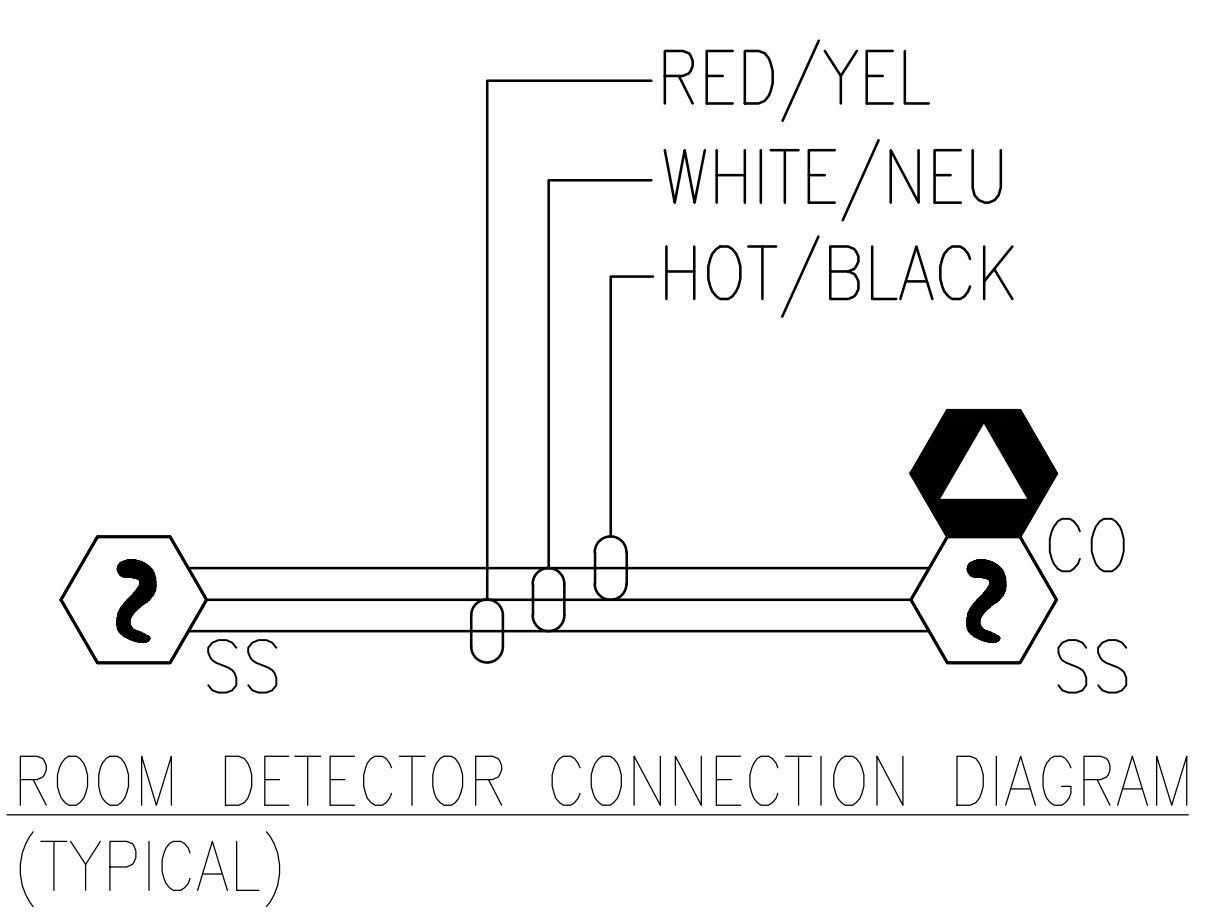
TrueAlert ES™ ADDRESSABLE (STYLE 4) SPEAKER/VISIBLE NOTIFICATION APPLIANCES 49SV SERIES (WALL MOUNT)



- WIRING NOTES:**
- REFER TO FIELD WIRING DIAGRAMS OF THE DRIVING TRUEALERT COMPATIBLE CONTROLLER FOR ADDITIONAL SLC WIRING INFORMATION. REFER TO THE FIELD WIRING DIAGRAMS SUPPLIED WITH THE 4100ES FOR ADDITIONAL NAC WIRING INFORMATION.
 - NOTIFICATION APPLIANCES ARE RATED FOR INDIVIDUAL NAMEPLATE LABELS.
 - MAINTAIN CORRECT POLARITY ON TERMINAL CONNECTIONS. DO NOT LOOP WIRES UNDER TERMINALS.
 - ALL TRUEALERT SLC AND NAC WIRING CONNECTIONS ARE SUPERVISED AND POWER-LIMITED.
 - POWERING THE S/V FROM AN APPLIANCE POWER SOURCE LESS THAN 23 VDC OR GREATER THAN 30 VDC MAY CAUSE PERMANENT DAMAGE TO THE S/V UNIT.
 - THE TRUEALERT ES S/V CAN ONLY BE OPERATED THROUGH A 4100ES ENHANCED POWER SUPPLY.
 - MAXIMUM TAPPING LENGTH IS 100 FEET.
- MOUNTING NOTES:**
- THE TRUEALERT S/V ATTACHES DIRECTLY TO A STANDARD 4-INCH ELECTRICAL BOX (NOT SUPPLIED), FLUSH MOUNTED OR SURFACE MOUNTED.
 - THERE ARE FOUR HOLES FOR 4-INCH SQUARE ELECTRICAL BOX MOUNTING. SECURE THE HOUSING TO THE BOX USING TWO MOUNTING SCREWS. THE TWO MOUNTING SCREWS ARE PLACED CROSS CORNER (OPPOSITE TOP AND BOTTOM HOLES).
 - TO REMOVE THE COVER, PRESS THE SNAP RELEASE IN (ONE AT A TIME) WITH A FLAT TIP SCREWDRIVER WHILE PULLING UP THE COVER WITH THE OTHER HAND. ADDRESS SWITCH (SW1 IS ACCESSIBLE WITH THE COVER REMOVED).



TRANSFORMER ENCLOSURE
AES 1640-ENCL WITH TRANSFORMER
POWER IN: 16.5VAC, 40VA, /45VA
CLASS 2 (DRY) SOURCE ONLY.



NOTE:
BRN/YEL TANDEM WIRE IS ONLY TO BE USED WHEN CONNECTING TWO OR MORE GN-503 DETECTORS TOGETHER. RED/YEL LEGACY TANDEM WIRE TO BE USED WHEN CONNECTING ANY GN-300 SERIES DETECTORS TO A GN-503 DEVICE.
REFER TO INSTALLATION DOCUMENTATION FOR FURTHER INFORMATION.

END-OF-LINE RESISTOR CODES

NOTE: REFER TO PANEL/MODULE AND DEVICE INSTALLATION INSTRUCTIONS FOR PROPER TERMINATIONS.
* USE WITH RETROFIT OR HIGH CURRENT MODULE

| MODEL | REFERENCE NUMBER | OHMS | 1ST BAND | 2ND BAND | 3RD BAND | 4TH BAND | 5TH BAND | WATTS | CIRCUIT TYPE | FIRE ALARM PANEL/MODULE |
|-----------|------------------|-------|----------|----------|----------|----------|----------|-------|---|--|
| 4081-9001 | 733-892 | 2.2K | RED | RED | RED | GOLD | N/A | 1/2 | ANNUNCIATOR (4300) | 4004, 4010 (TROUBLE) |
| 4081-9002 | 733-893 | 3.3K | ORANGE | ORANGE | RED | GOLD | N/A | 1 | N.O. INITIATING (EOLR) PULL, SMOKE, HEAT, WATERFLOW, TAMPER, ETC. | 4004*, 4005*, 4006*, 4100, 4100U, 4100U, ZAM'S |
| 4081-9003 | 733-896 | 4.7K | YELLOW | VIOLET | RED | GOLD | N/A | 1/2 | CURRENT LIMITED N.O. INITIATING NOTIFICATION (DACT) | 4090-9001 IDNET IAM (EOLR) 2080-9024 |
| 4081-9004 | 733-886 | 6.8K | BLUE | GREY | RED | GOLD | N/A | 1/2 | N.O. INITIATING (EOLR) PULL, SMOKE, HEAT, WATERFLOW, TAMPER, ETC. | 4004, 4005, 4006, 4100, 4100U, 4100U, ZAM'S |
| 4081-9005 | 733-984 | 1.8K | BROWN | GREY | RED | GOLD | N/A | 1/2 | CURRENT LIMITED N.O. INITIATING (N LINE) | 4090-9001 IDNET IAM |
| 4081-9006 | 733-890 | 560Ω | GREEN | BLUE | BROWN | GOLD | N/A | 1 | N.C. INITIATING (EOLR) | 4005*, 4090-9001 IDNET IAM 4100, 4100U |
| 4081-9007 | 733-891 | 1.2K | BROWN | RED | RED | GOLD | N/A | 1 | N.C. INITIATING (EOLR) | 4005 |
| 4081-9008 | 733-894 | 10K | BROWN | BLACK | ORANGE | GOLD | N/A | 1/2 | NOTIFICATION | 4004, 4005, 4006, 4008, 4009, 4010, 4100, 4100U |
| 4081-9009 | 733-912 | 20Ω | RED | BLACK | BLACK | GOLD | N/A | 1 | TO MR-101 RELAY COIL | 4005 8 POINT I/O |
| 4081-9010 | 733-973 | 1K | BROWN | BLACK | RED | GOLD | N/A | 1 | N.C. INITIATING (ACROSS CONTACTS) 24 PT. I/O (ACROSS CONTACTS) CURRENT LIMITED N.O. INITIATING (IN SERIES WITH CONTACT) | 4005*, 4090-9001 IDNET IAM 4605-7401, 4100 SERIES |
| 4081-9011 | 733-974 | 100Ω | BROWN | BLACK | BROWN | GOLD | N/A | 1/2 | ANNUNCIATOR (N2) | 4006, 4008, 4010 |
| 4081-9012 | 733-985 | 22K | RED | RED | ORANGE | GOLD | N/A | 1/2 | SPEAKER CIRCUIT | 4003 |
| 4081-9013 | 734-086 | 4.99K | YELLOW | WHITE | WHITE | BROWN | BROWN | 1/2 | | |
| 4081-9014 | 734-092 | 2.4K | RED | YELLOW | RED | GOLD | N/A | 1/2 | N.C. INITIATING (SECURITY MONITORING EOLR) | 4090-9001 IDNET IAM |
| 4081-9015 | 734-093 | 1.5K | BROWN | GREEN | RED | GOLD | N/A | 1/2 | CURRENT LIMITED N.O. INITIATING (SECURITY MONITORING EOLR) | 4090-9001 IDNET IAM |
| 4081-9016 | 734-149 | 150K | BROWN | GREEN | YELLOW | GOLD | N/A | 1/2 | | |
| 4081-9017 | 734-171 | 3.9K | ORANGE | WHITE | RED | GOLD | N/A | 1 | | |
| 4081-9018 | 734-168 | 10K | BROWN | BLACK | ORANGE | GOLD | N/A | 1 | 70VRMS CONSTANT SUPV. NACS | 4100-1260 |
| 378-090 | 8.2K | GRAY | RED | RED | RED | GOLD | N/A | 1/2 | SECURITY MONITORING (EOLR) | 4100, 4100U |
| 378-046 | 5.6K | GREEN | BLUE | RED | RED | GOLD | N/A | 1/2 | N.O. SECURITY MON. (SERIES) | 4100, 4100U |
| 378-069 | 12K | BROWN | RED | ORANGE | ORANGE | GOLD | N/A | 1/2 | N.C. SECURITY MON. (SHUNT) | 4100, 4100U |

FILE PATH: Z:\CAD-Engineering - New\2011\New\Hazardous Projects\667 Congress - Apartments (R-981818001)\SCG\Digital Fire Alarm Drawings\FA-703.dwg
 LAST SAVED BY: DKTRUPATHI
 LAST PRINTED: 5/18/2016 4:42:44 PM
 30" x 42" - Job E1 Size

tyco
SimplexGrinnell

Safer. Smarter. Tyco.™

DISTRICT MGT
 WESTBROOK, MA 01581
 SERVICE: 508-644-4444
 PHONE: 508-644-4444
 FAX: 508-644-4444

667 CONGRESS STREET APARTMENTS

667 CONGRESS STREET APARTMENTS
 667 CONGRESS STREET
 PORTLAND, ME 04101

| ISSUE LOG | MARK | DATE | CAD | CHK | DESCRIPTION |
|-----------|------|------|-----|-----|-------------|
| | | | | | |
| | | | | | |
| | | | | | |
| | | | | | |

DRAWN BY: DINESH KUMAR
 CHECKED BY: M VAUGHN
 ISSUE DATE: 5/4/16
 JOB #: 147426142
 PROJECT #: 147-991818001
 SIMPLEXGRINNELL © 2016

SYSTEM: FIRE ALARM SYSTEM
 SHEET: WIRING TYPICALS
 FA-703