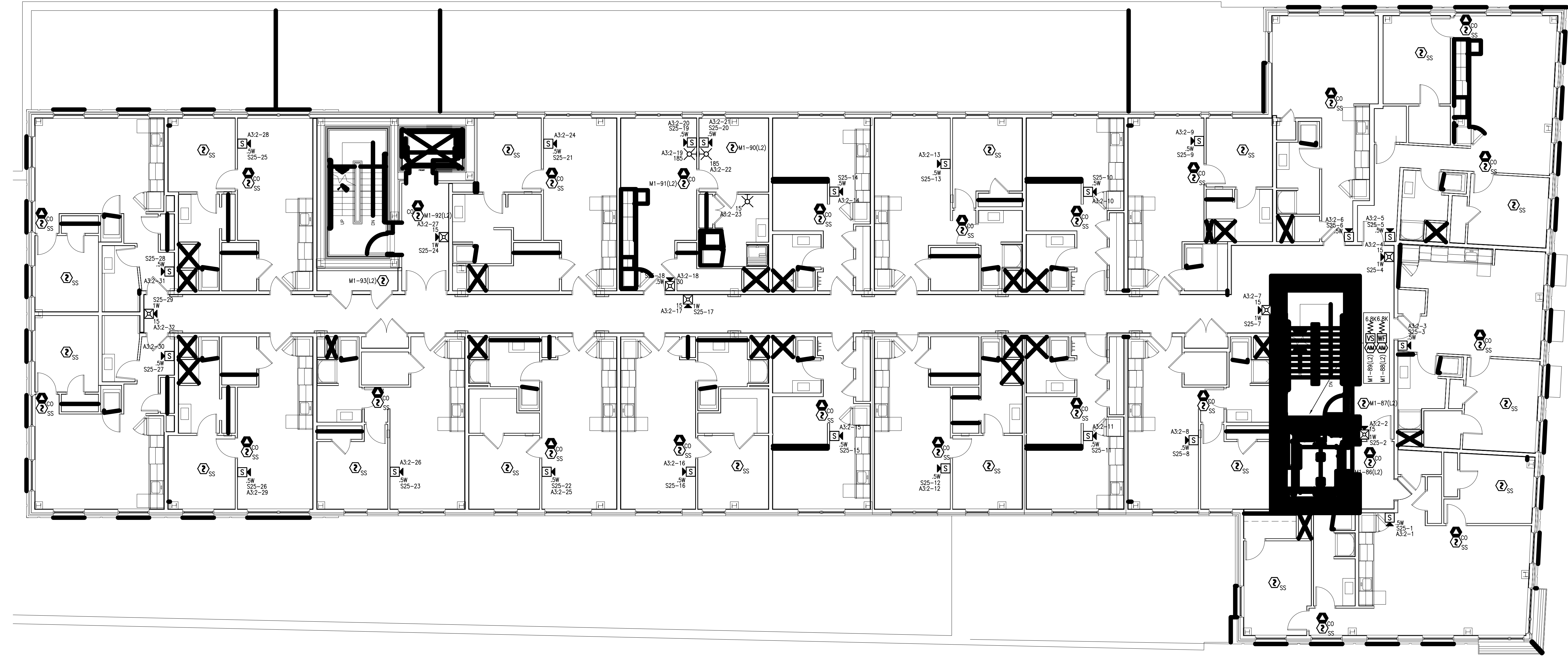


FILE PATH: Z:\CAD-Engineering - New 2011 & Newer\Maine Projects\667 Congress - Apartments (R-9318001)\SCG Draw\Original Drawings & Cases\Digital Fire Alarm Drawings\FA-107.dwg

LAST SAVED BY: DKTRUPATHI

LAST PRINTED: 5/18/2016 4:40:27 PM

30" x 42" - Job E1 Size



PLAN NORTH  
**DEVICE PLACEMENT PLAN - SIXTH FLOOR**  
 SCALE: 1/8" = 1'-0"  
 0 4 8 16  
 (IN FEET)

**GENERAL NOTES:**  
 1. ALL CEILING ARE ASSUMED TO BE 10' A.F.F. SMOOTH CONSTRUCTION UNLESS NOTED OTHERWISE.  
 2. TAP ALL SPEAKERS AT 0.5W UNLESS NOTED OTHERWISE.  
 3. SET ALL SPEAKER VOLUME JUMPERS TO THE 70W SETTING.  
 4. ALL NOTIFICATION APPLIANCE CANDELA INTENSITY PLUS SHALL RETAIN THEIR FACTORY SETTING OF "TAP" UNLESS OTHERWISE DIRECTED BY THE AUTHORITY HAVING JURISDICTION.

**tyco**  
 Safer. Smarter. Tyco.™  
**SimplexGrinnell**  
 DISTRICT MGT  
 WESTBROOK, ME 04092  
 SERVICE (207)462-6440  
 PHONE (207)462-6440  
 FAX (207)462-6440  
© 2016 Tyco International (US) LLC. All rights reserved. Tyco, Safer. Smarter. Tyco.™, SimplexGrinnell and the Tyco logo are trademarks of Tyco International (US) LLC. All other marks are the property of their respective owners.

**667 CONGRESS STREET APARTMENTS**  
 667 CONGRESS STREET APARTMENTS  
 667 CONGRESS STREET  
 PORTLAND, ME 04101

ISSUE LOG	MARK	DATE	CAD	CHK	DESCRIPTION

DRAWN BY: DINESH KUMAR  
 CHECKED BY: M VAUGHN  
 ISSUE DATE: 5/4/16  
 JOB #: 147426142  
 PROJECT #: 147-991816001  
 SIMPLEXGRINNELL © 2016  
 SYSTEM: FIRE ALARM SYSTEM  
 SHEET:  
 DEVICE PLACEMENT PLAN - SIXTH FLOOR  
**FA-107**