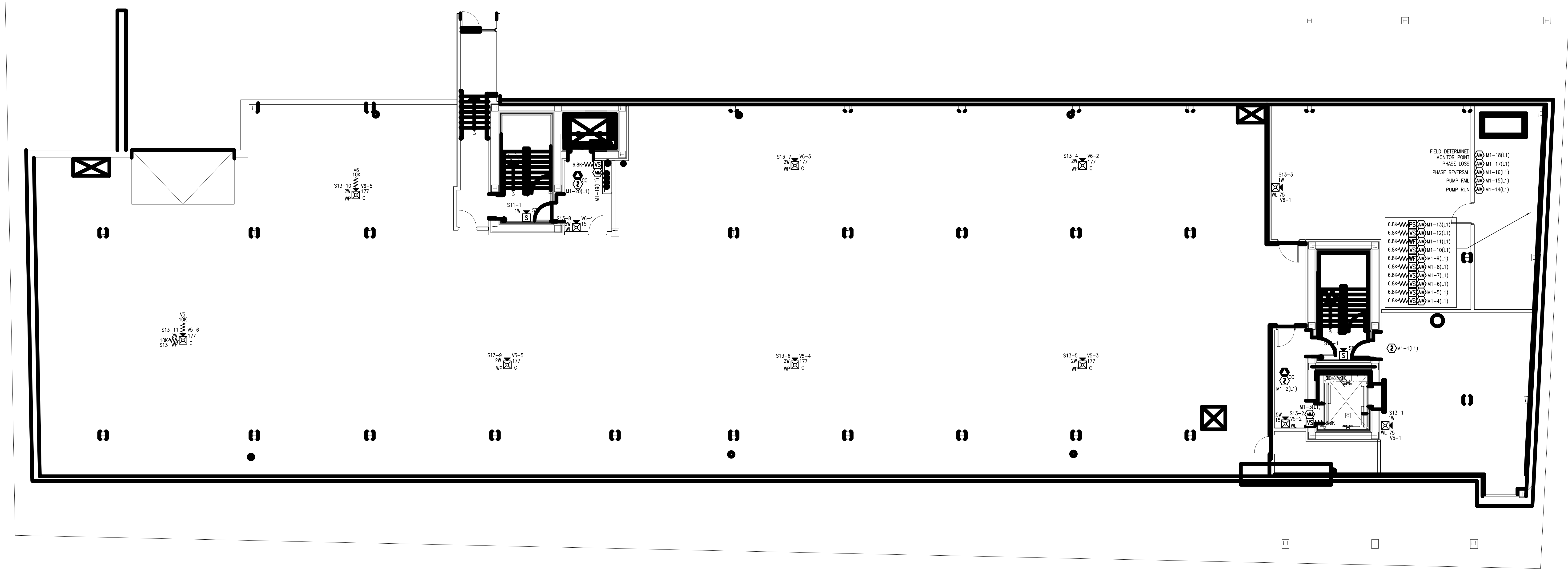


FILE PATH: Z:\CAD-Engineering - New\2011 & Newer\Maine Projects\667 Congress - Apartments (R-6018001)\SCG\Draw\Original Drawings & Cases\Digital Fire Alarm Drawings\FA-101.dwg

LAST SAVED BY: DKTRUPATHI

LAST PRINTED: 5/18/2016 4:39:25 PM

30" x 42" - Arch E1 Size



GENERAL NOTES:
 1. ALL CEILING ARE ASSUMED TO BE 10' A.F.F., SMOOTH CONSTRUCTION UNLESS NOTED OTHERWISE.
 2. TYP ALL SPEAKERS AT 0.5W UNLESS NOTED OTHERWISE.
 3. SET ALL SPEAKER VOLUME JUMPERS TO THE 70W SETTING.
 4. ALL NOTIFICATION APPLIANCE CANDELA INTENSITY PLUS SHALL RETAIN THEIR FACTORY SETTING OF "TAP" UNLESS OTHERWISE DIRECTED BY THE AUTHORITY HAVING JURISDICTION.

tyco
 SimplexGrinnell
 Safer. Smarter. Tyco.™
 DISTRICT MGT
 WESTBROOK, ME 04092
 SERVICE CENTER
 PHONE: 207-646-6440
 FAX: 207-646-6440

667 CONGRESS STREET APARTMENTS
 667 CONGRESS STREET APARTMENTS
 667 CONGRESS STREET
 PORTLAND, ME 04101

ISSUE LOG	MARK	DATE	CAD	CHK	DESCRIPTION

DRAWN BY: DINESH KUMAR
 CHECKED BY: M VAUGHN
 ISSUE DATE: 5/4/16
 JOB #: 147426142
 PROJECT #: 147-991818001
 SIMPLEXGRINNELL © 2016
 SYSTEM: FIRE ALARM SYSTEM
 SHEET: DEVICE PLACEMENT PLAN - BASEMENT FLOOR

FA-101

IMPORTANT NOTICE: THIS DRAWING IS THE PROPERTY OF SIMPLEXGRINNELL AND IS NOT TO BE REPRODUCED OR TRANSMITTED IN ANY FORM OR BY ANY MEANS, ELECTRONIC OR MECHANICAL, INCLUDING PHOTOCOPYING, RECORDING, OR BY ANY INFORMATION STORAGE AND RETRIEVAL SYSTEM. THE INFORMATION CONTAINED HEREIN IS THE PROPERTY OF SIMPLEXGRINNELL AND IS NOT TO BE REPRODUCED OR TRANSMITTED IN ANY FORM OR BY ANY MEANS, ELECTRONIC OR MECHANICAL, INCLUDING PHOTOCOPYING, RECORDING, OR BY ANY INFORMATION STORAGE AND RETRIEVAL SYSTEM. THE INFORMATION CONTAINED HEREIN IS THE PROPERTY OF SIMPLEXGRINNELL AND IS NOT TO BE REPRODUCED OR TRANSMITTED IN ANY FORM OR BY ANY MEANS, ELECTRONIC OR MECHANICAL, INCLUDING PHOTOCOPYING, RECORDING, OR BY ANY INFORMATION STORAGE AND RETRIEVAL SYSTEM.