

(1) D.F. 30" x 48" INTERNALLY ILLUMINATED BLADE SIGN  
 6" DEEP SIGN WITH 3/8" WHITE ACRYLIC FACES  
 1.5" BLACK RETAINERS, BLACK CABINET/EXTRUSION  
 " x 2" BRACKET TO HOLD SIGN AND TO BE MOUNTED ON BUILDING

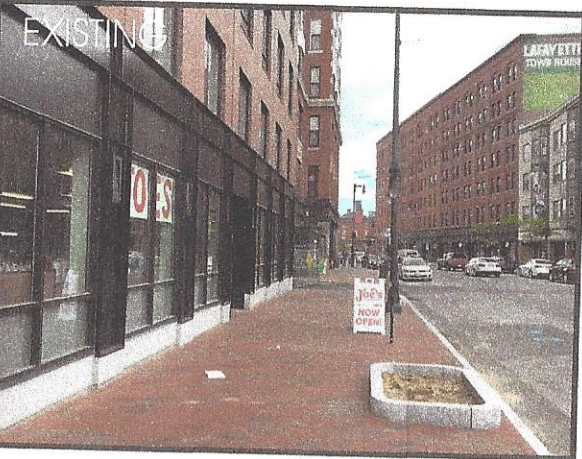
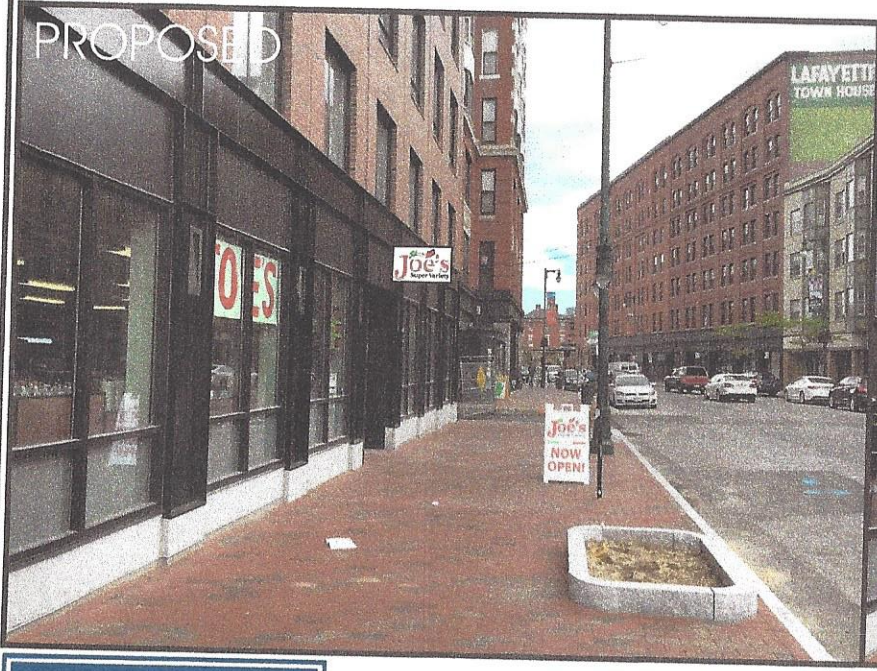
**BLADE SIGN**

SCALE: 3/4" = 1'  
 SQUARE FOOTAGE: 10

(A)

Front View

Daytime view



Client & Location	Customer Approval Signature	Revisions	Drawing ID	Date	Page #
			Blade.Signs.doc	06/06/2017	1 of 1
			Drawn By	Sales Rep	WO #
			Kayla	Rob	