

667 CONGRESS STREET
JOE'S REFLECTED CEILING PLAN

11/16/16

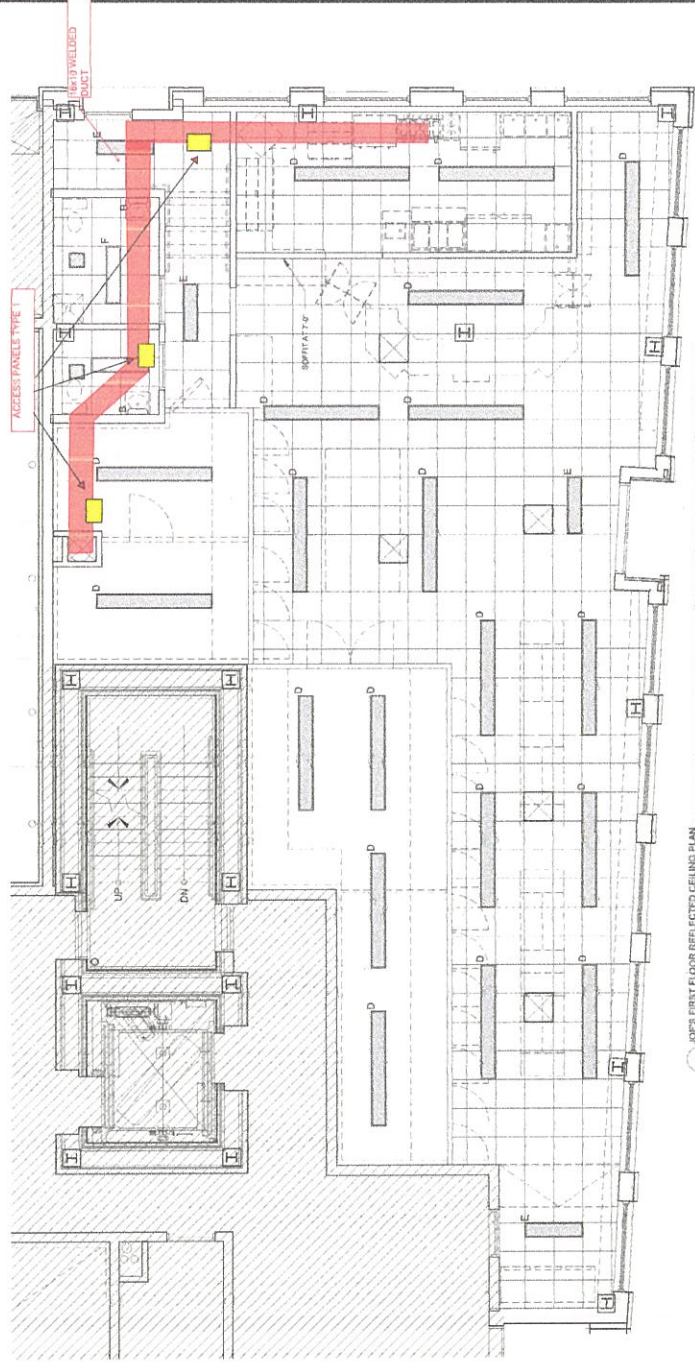
REFLECTED CEILING PLAN NOTES

- 1) G.C. TO COORDINATE LOCATIONS OF PLUMBING CLEAN OUTS AND PROVIDE FIRE RATED ACCESS PANELS AT CEILING
- 2) G.C. TO PROVIDE ACCESS PANELS AS REQUIRED FOR ALL MECHANICAL AND ELECTRICAL (M/E) NOT SHOWN ON THIS REFLECTED CEILING PLAN
- 3) G.C. TO PROVIDE METAL FRAMING AND INSULATION FOR ALL ACCESS PANELS AND CONTROL Joints
- 4) ALL LIGHTING TO BE ON DIMMER SWITCHES
- 5) ALL RECESSED LIGHTING FIXTURES TO HAVE RATED HOUSINGS TO MEET FIRE RATINGS OF CEILING THEY ARE INSTALLED WITHIN

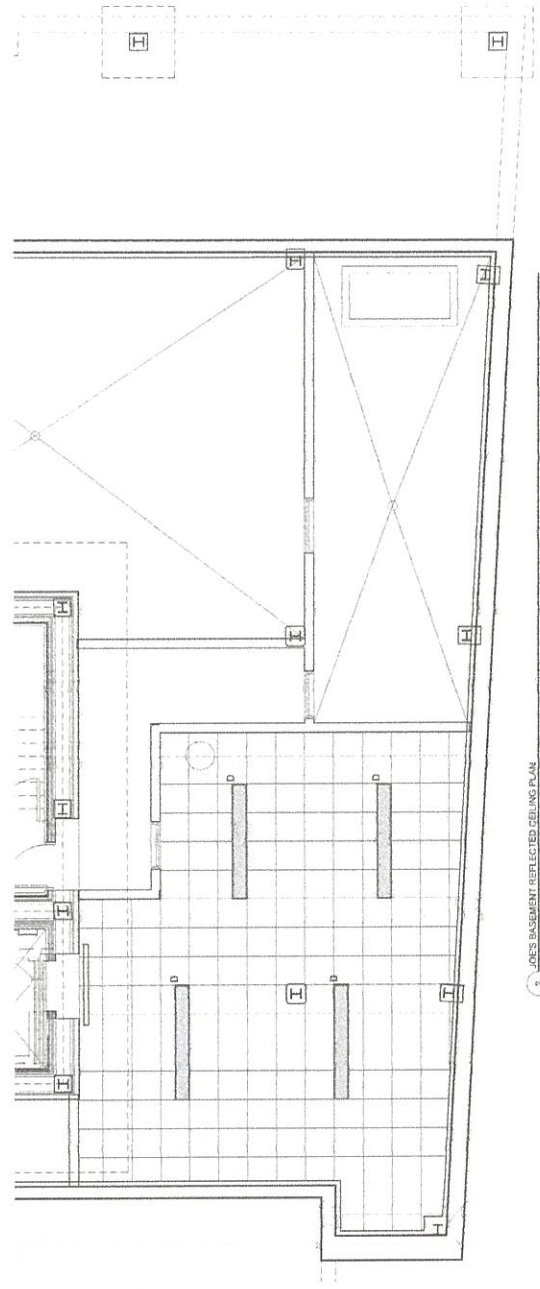
REFLECTED CEILING PLAN AND LIGHTING LEGEND

SYMBOL	DESCRIPTION
	WALL SCONCE IN BATHROOM OVER VANITY
	1X6 SURFACE MOUNT LED WITH LENS
	1X6 SURFACE MOUNT LED WITH LENS
	1X4 SURFACE MOUNT - 30' P.C.
	2'X2' MECHANICAL GRILL
	1'X1' MECHANICAL GRILL

400 AMP 3 PHASE / 40 CIRCUIT PANEL



1 JOE'S FIRST FLOOR REFLECTED CEILING PLAN
11/16/16 BY: [unreadable]



2 JOE'S BASEMENT REFLECTED CEILING PLAN
11/16/16 BY: [unreadable]

ASK-27