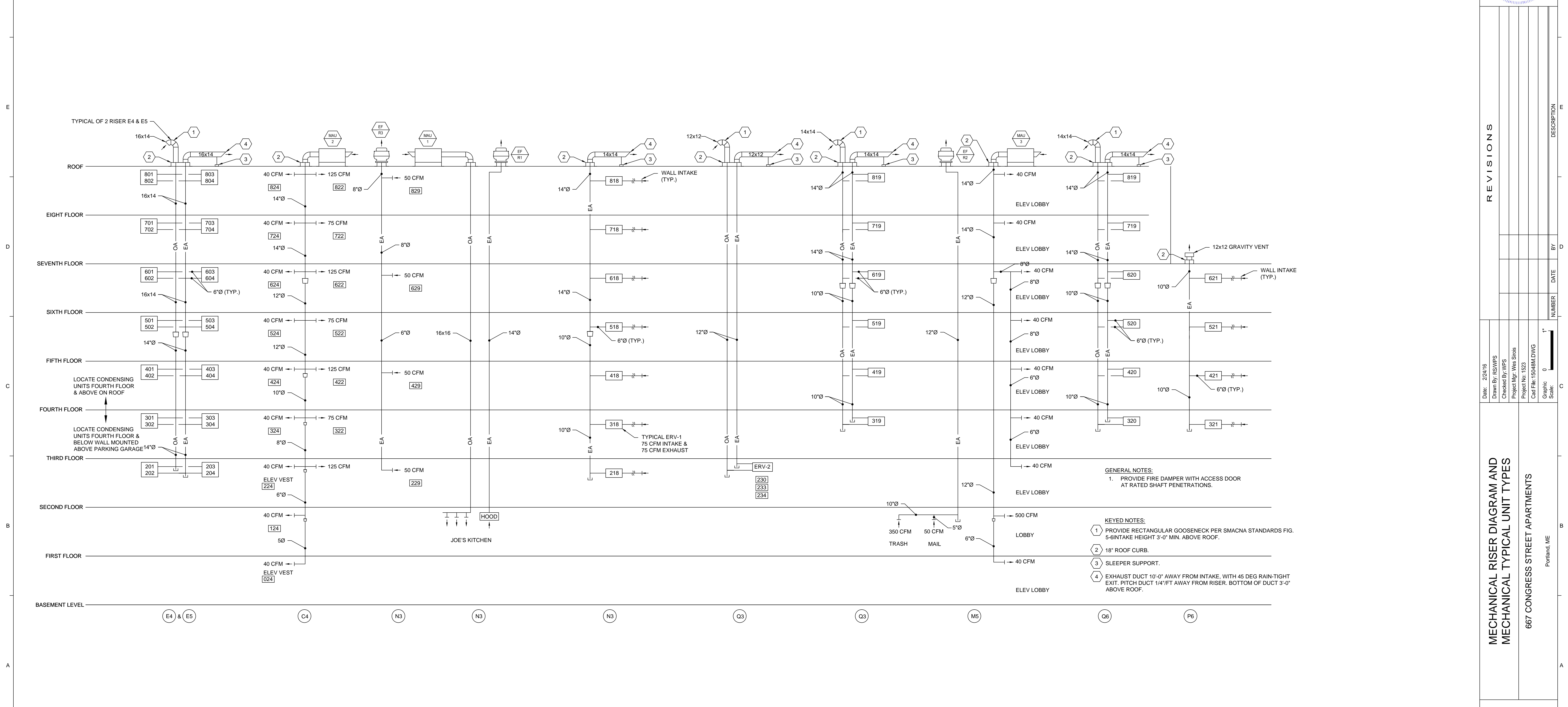


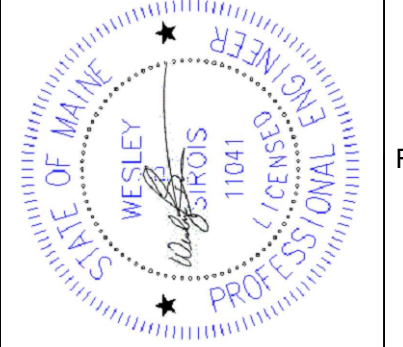
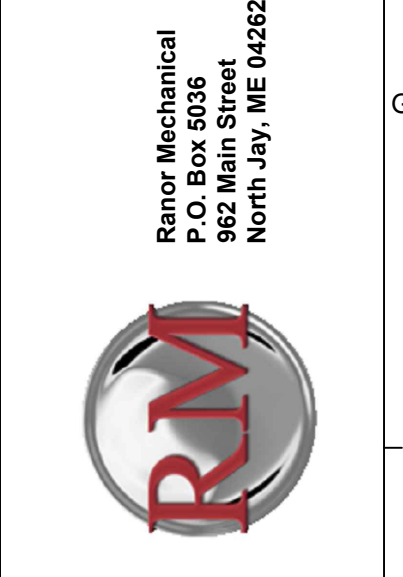
F1	MECHANICAL TYPICAL UNIT TYPE 201-801 & 202-802	F3	MECHANICAL TYPICAL UNIT TYPE 203-803, 204-804, 205-805, 207-807, 209-809, 212-812, 213-813 & 217-817	F5	MECHANICAL TYPICAL UNIT TYPE 210-810, 211-811, 214-814, & 215-815	F7	GENERAL NOTES	F9	KEYED NOTES
1/4"=1'-0"		1/4"=1'-0"		1/4"=1'-0"		1/4"=1'-0"		NONE	



A1	MECHANICAL RISER DIAGRAM
NONE	

GENERAL NOTES:
 COORDINATE CONDENSATE FOR ERV'S & SPLITS. MAY BE RUN AS SHOWN TO WASHER BOXES OR MAINS TO BASEMENT SANITARY PER CODE. DEPENDING ON ERV SELECTION CONDENSATE MAY NOT BE REQUIRED FOR THE ERV.
 DUCTWORK IS SCHEMATIC IN NATURE FOR ERV'S. FINAL LAYOUT WILL REQUIRE COORDINATION BASED ON FINAL ERV SELECTION. DUCT RUNS SHOULD BE OPTIMIZED TO LIMIT FRICTION LOSSES AND LIMIT NOISE. UTILIZE FLEX DUCT FOR CONNECTIONS IN POTENTIAL HIGHER NOISE LOCATIONS. WHERE POSSIBLE AVOID SHORT RUNS FROM DIFFUSER TO THE FAN SIDE (NOISE SIDE) OF THE ERV.
 DAMPERS ARE TO BE PROVIDED FOR THE OA AND EA AT EACH ERV.

KEYED NOTES:
 1 30"x30" FIRE RATED AP SIZED TO REMOVE ERV-1.
 2 3/4" CD PIPING DN IN WALL TO WASHER STAND PIPE.



REVISIONS

NUMBER	DATE	BY	DESCRIPTION

Date: 2/24/16
 Drawn By: RS/WPS
 Checked By: WPS
 Project Mgr: Wes Strim
 Project No: 1523
 Cad File: 1508R4DWG
 Graphic Scale: 0 1'

MECHANICAL RISER DIAGRAM AND MECHANICAL TYPICAL UNIT TYPES
 667 CONGRESS STREET APARTMENTS
 Portland, ME

M4-0

PERMIT SET ~ 24 February 2016 - NOT FOR CONSTRUCTION