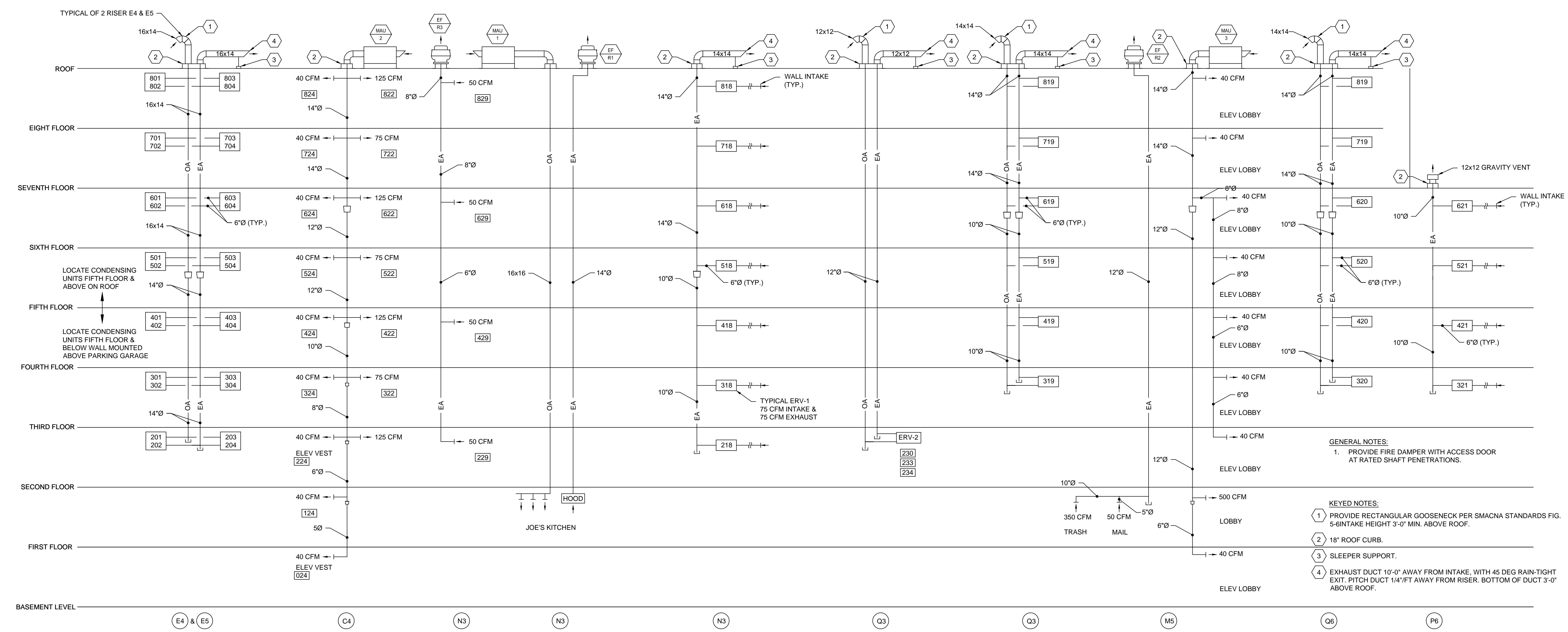


- KEYED NOTES:
- 1 30"x30" FIRE RATED AP SIZED TO REMOVE ERV-1.
 - 2 3/4" CD PIPING DN IN WALL TO WASHER STAND PIPE.

ALL OTHER 1 BEDROOM & 2BEDROOM UNITS ARE SIMILAR IN LAYOUT

F1	MECHANICAL TYPICAL UNIT TYPE 201-801 & 202-802	F3	MECHANICAL TYPICAL UNIT TYPE 203-803, 204-804, 205-805, 207-807, 209-809, 212-812, 213-813 & 217-817	F5	MECHANICAL TYPICAL UNIT TYPE 210-810, 211-811, 214-814, & 215-815	F7		F9	KEYED NOTES
1/4"=1'-0"		1/4"=1'-0"		1/4"=1'-0"				NONE	



- GENERAL NOTES:
- PROVIDE FIRE DAMPER WITH ACCESS DOOR AT RATED SHAFT PENETRATIONS.
- KEYED NOTES:
- 1 PROVIDE RECTANGULAR GOOSENECK PER SMACNA STANDARDS FIG. 5-6 INTAKE HEIGHT 3'-0" MIN. ABOVE ROOF.
 - 2 18" ROOF CURB.
 - 3 SLEEPER SUPPORT.
 - 4 EXHAUST DUCT 10'-0" AWAY FROM INTAKE, WITH 45 DEG RAIN-TIGHT EXIT. PITCH DUCT 1/4" FT AWAY FROM RISER. BOTTOM OF DUCT 3'-0" ABOVE ROOF.

REVISIONS

NUMBER	DATE	BY	DESCRIPTION

Date: 1/29/16
 Drawn By: SCL/WPS
 Checked By: WPS
 Project Mgr: Wes Strim
 Project No: 1523
 Cad File: 1508R4DWG
 Graphic Scale: 0 1'

MECHANICAL RISER DIAGRAM AND MECHANICAL TYPICAL UNIT TYPES

667 CONGRESS STREET APARTMENTS

Portland, ME

M4-0

PERMIT SET ~ 29 January 2016 - NOT FOR CONSTRUCTION