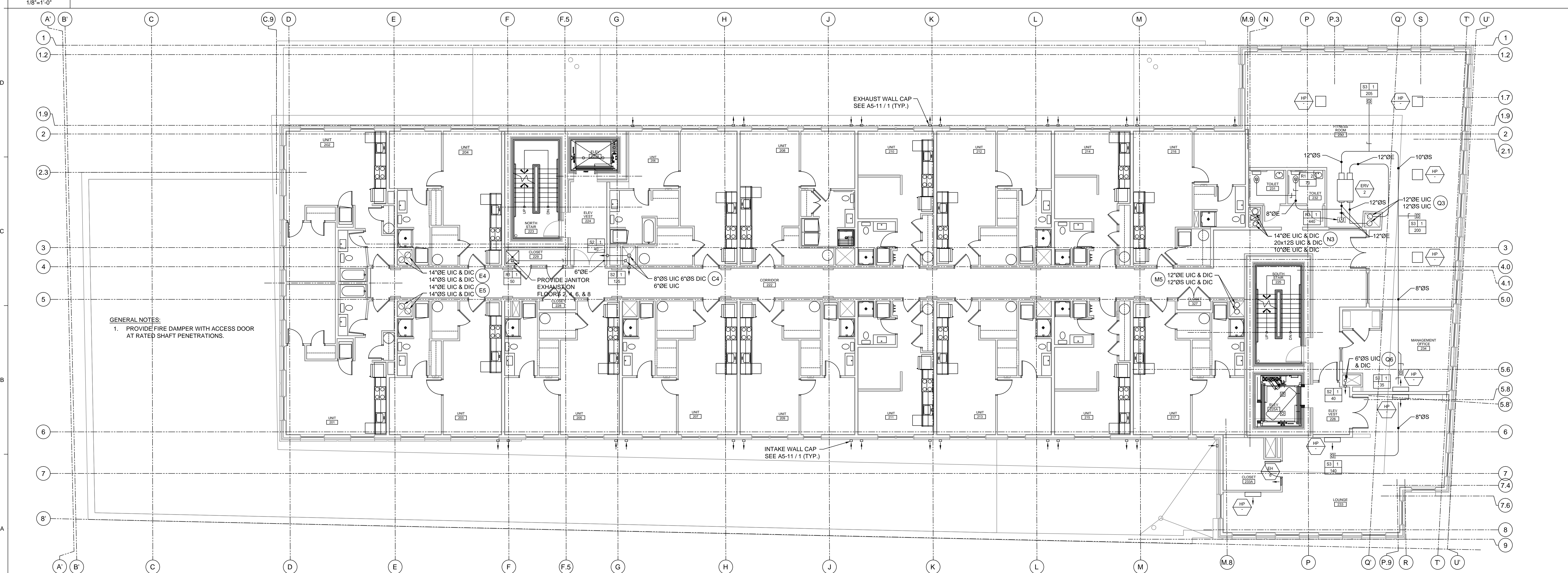


GENERAL NOTES:
 1. PROVIDE FIRE DAMPER WITH ACCESS DOOR AT RATED SHAFT PENETRATIONS.

EXHAUST WALL CAP
 SEE A5-11 / 1 (TYP.)

INTAKE WALL CAP
 SEE A5-11 / 1 (TYP.)

E1 MECHANICAL TYPICAL THIRD, FOURTH, FIFTH AND SIXTH FLOOR PLANS
 1/8"=1'-0"



GENERAL NOTES:
 1. PROVIDE FIRE DAMPER WITH ACCESS DOOR AT RATED SHAFT PENETRATIONS.

EXHAUST WALL CAP
 SEE A5-11 / 1 (TYP.)

INTAKE WALL CAP
 SEE A5-11 / 1 (TYP.)

A1 MECHANICAL SECOND FLOOR PLAN
 1/8"=1'-0"

Revier Mechanical
 P.O. Box 5035
 882 Main Street
 North Jay, ME 04942

REVISIONS

| NO. | DATE | BY | DESCRIPTION |
|-----|------|----|-------------|
| | | | |
| | | | |
| | | | |
| | | | |

Date: 1/29/16
 Drawn By: SCL/WPS
 Checked By: WPS
 Project Mgr: Wes Smith
 Project No: 1523
 Cad File: 1504BMDWG
 Graphic Scale: 0' = 1"

MECHANICAL SECOND AND TYPICAL THIRD, FOURTH, FIFTH AND SIXTH FLOOR PLANS
 667 CONGRESS STREET APARTMENTS
 Portland, ME

M1-1

PERMIT SET ~ 29 January 2016 - NOT FOR CONSTRUCTION