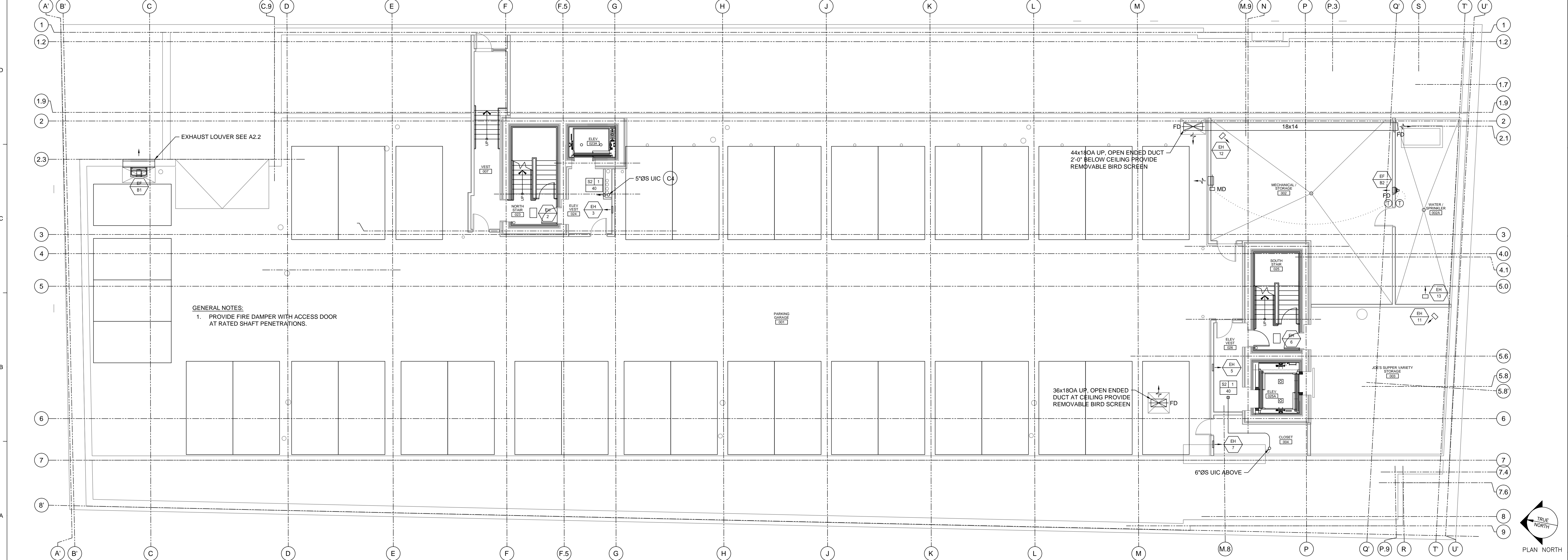


E1 MECHANICAL FIRST FLOOR PLAN
1/8"=1'-0"



A1 MECHANICAL BASEMENT FLOOR PLAN
1/8"=1'-0"

Ranco Mechanical
P.O. Box 5038
962 Main Street
North Jay, ME 04942

REGISTERED PROFESSIONAL ENGINEER
STATE OF MAINE
LICENSE NO. 11015
MECHANICAL

REVISIONS

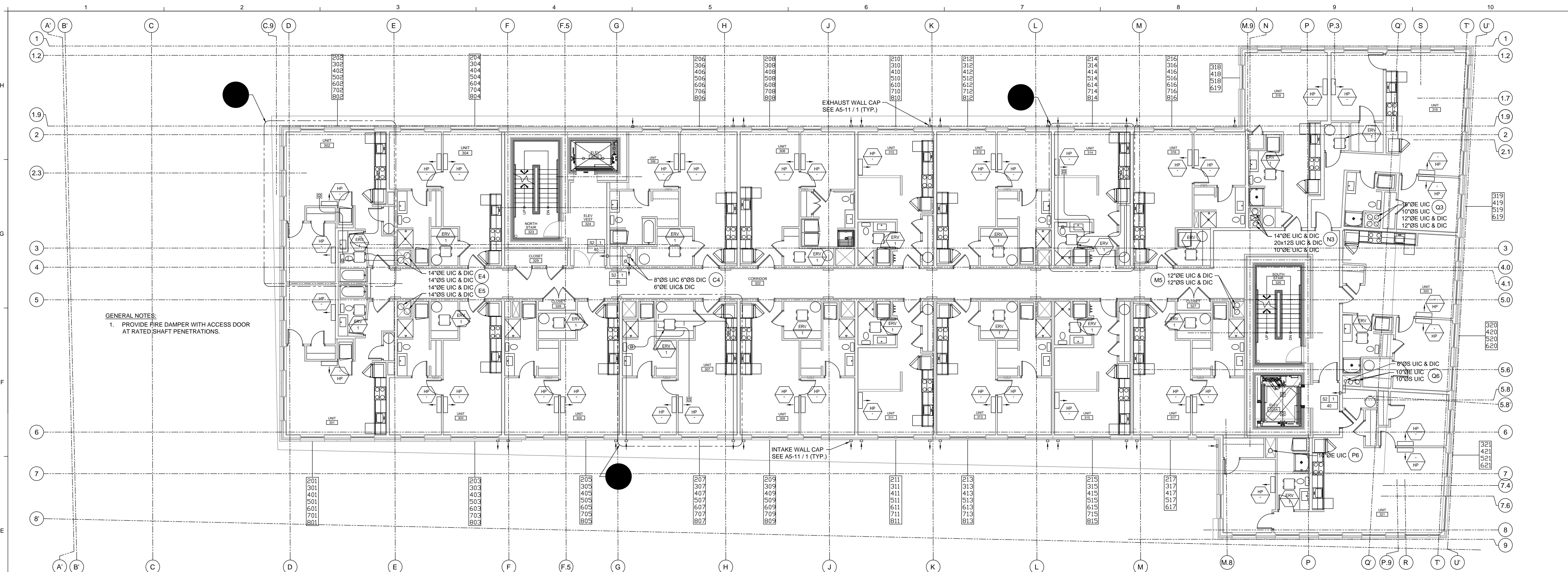
| NUMBER | DATE | DESCRIPTION |
|--------|------|-------------|
| | | |
| | | |
| | | |

Date: 1/29/16
 Drawn By: SCL/WPS
 Checked By: WPS
 Project Mgr: Wes Sims
 Project No: 1523
 Cad File: 150404DWG
 Graphic Scale: 0' = 1'

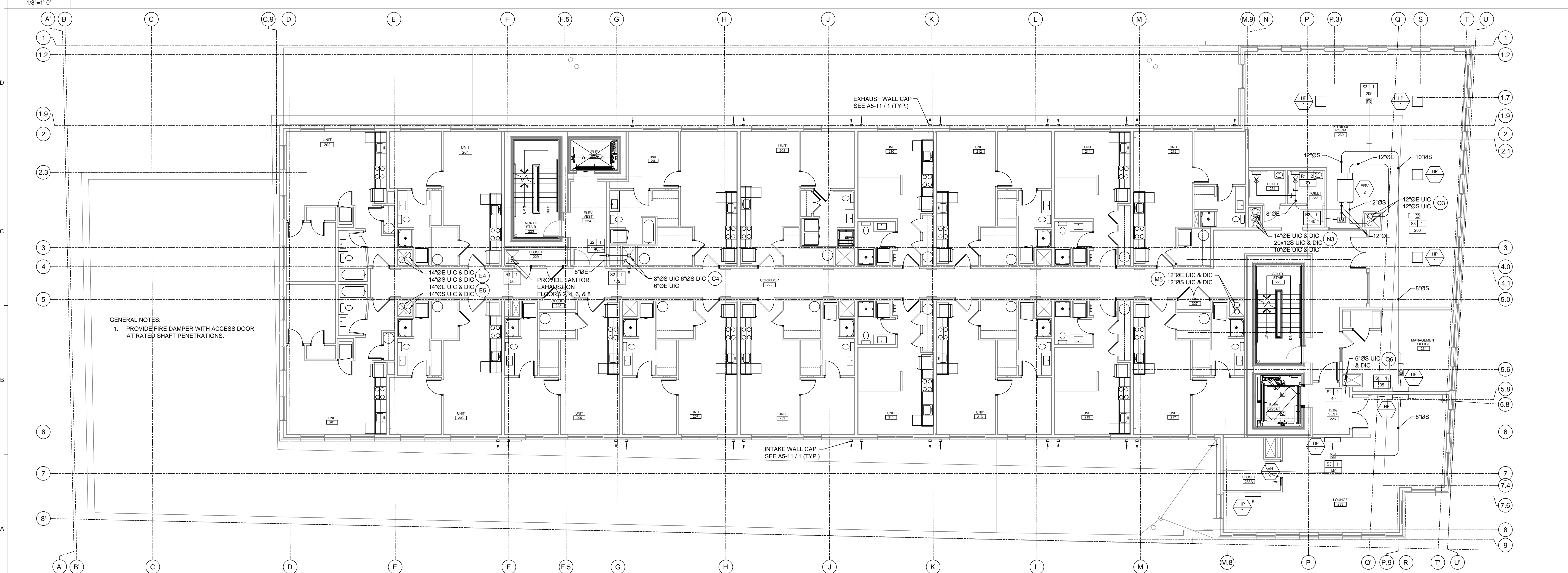
MECHANICAL BASEMENT AND FIRST FLOOR PLANS
 667 CONGRESS STREET APARTMENTS
 Portland, ME

M1-0

PERMIT SET ~ 29 January 2016 - NOT FOR CONSTRUCTION



E1 MECHANICAL TYPICAL THIRD, FOURTH, FIFTH AND SIXTH FLOOR PLANS
1/8"=1'-0"



A1 MECHANICAL SECOND FLOOR PLAN
1/8"=1'-0"

Revo Mechanical
 P.O. Box 5035
 882 Main Street
 North Jay, ME 04942

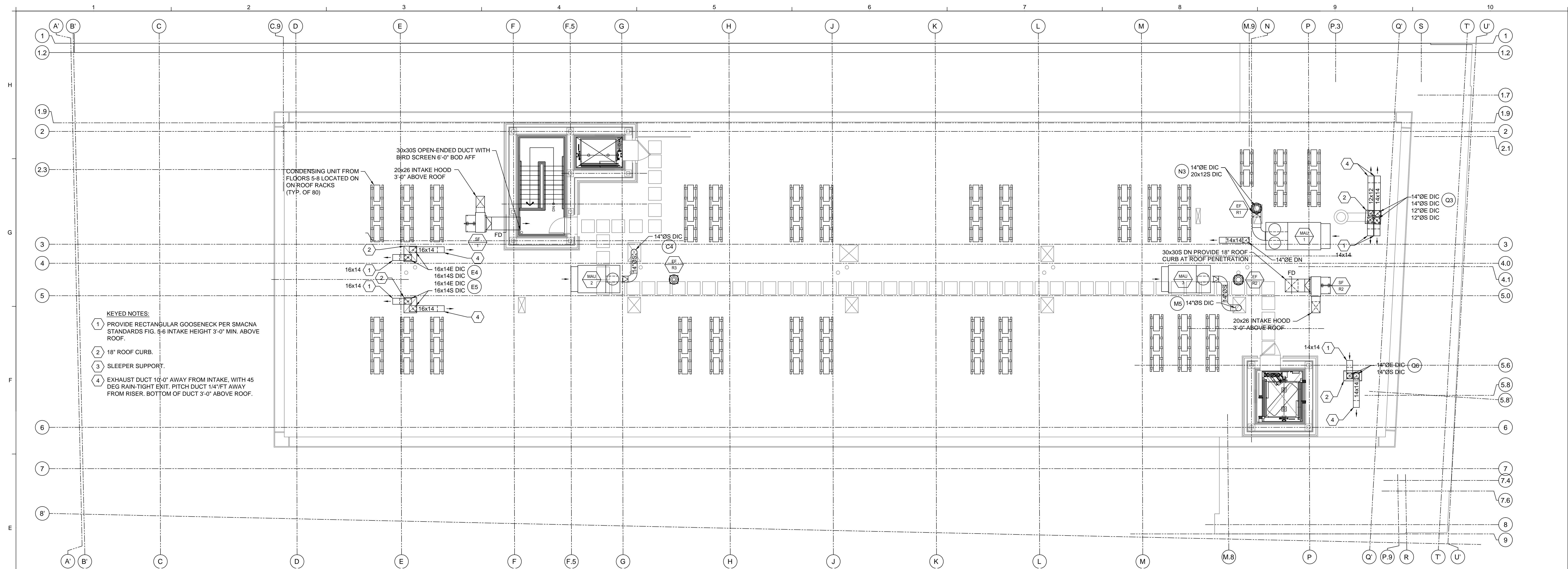
REVISIONS
 NO. BY DATE DESCRIPTION

| NO. | BY | DATE | DESCRIPTION |
|-----|----|------|-------------|
| | | | |
| | | | |

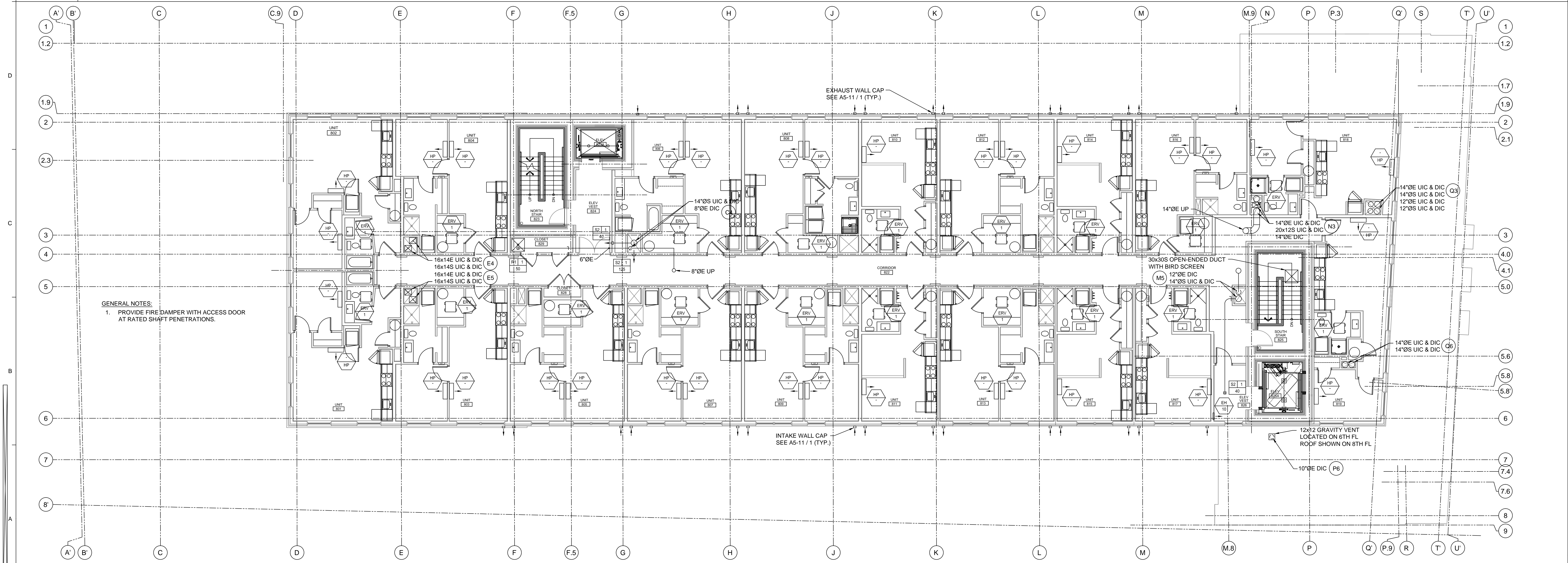
Date: 1/29/16
 Drawn By: SCL/WPS
 Checked By: WPS
 Project Mgr: Wes Smith
 Project No: 1523
 Cad File: 1504BMDWG
 Graphic Scale: 0' 1"

MECHANICAL SECOND AND TYPICAL THIRD, FOURTH, FIFTH AND SIXTH FLOOR PLANS
 667 CONGRESS STREET APARTMENTS
 Portland, ME

M1-1
 PERMIT SET ~ 29 January 2016 - NOT FOR CONSTRUCTION



E1 MECHANICAL ROOF PLAN
1/8"=1'-0"



A1 MECHANICAL TYPICAL SEVENTH AND EIGHT FLOOR PLANS
1/8"=1'-0"

RMI
 RMI Mechanical
 P.O. Box 5038
 962 Main Street
 North Jay, ME 04956

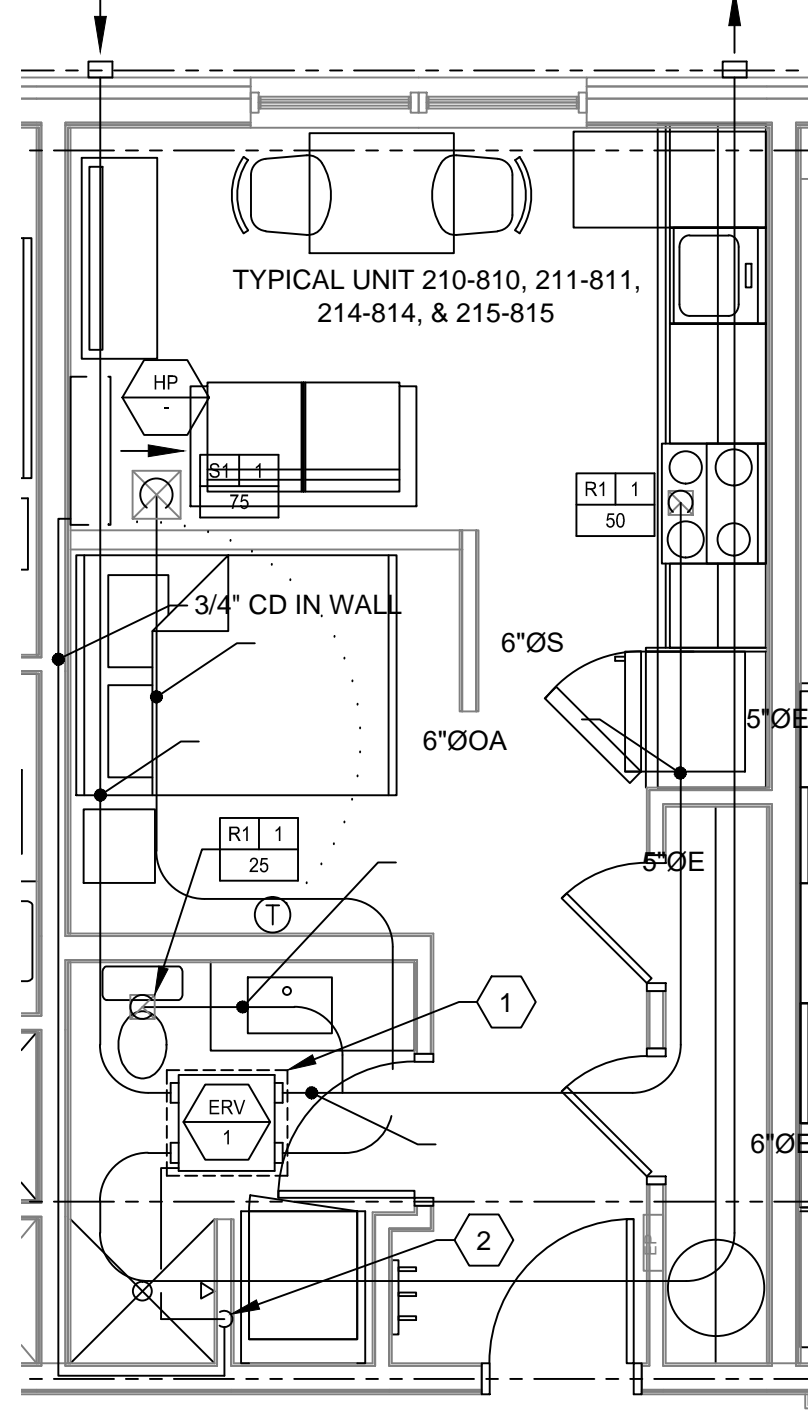
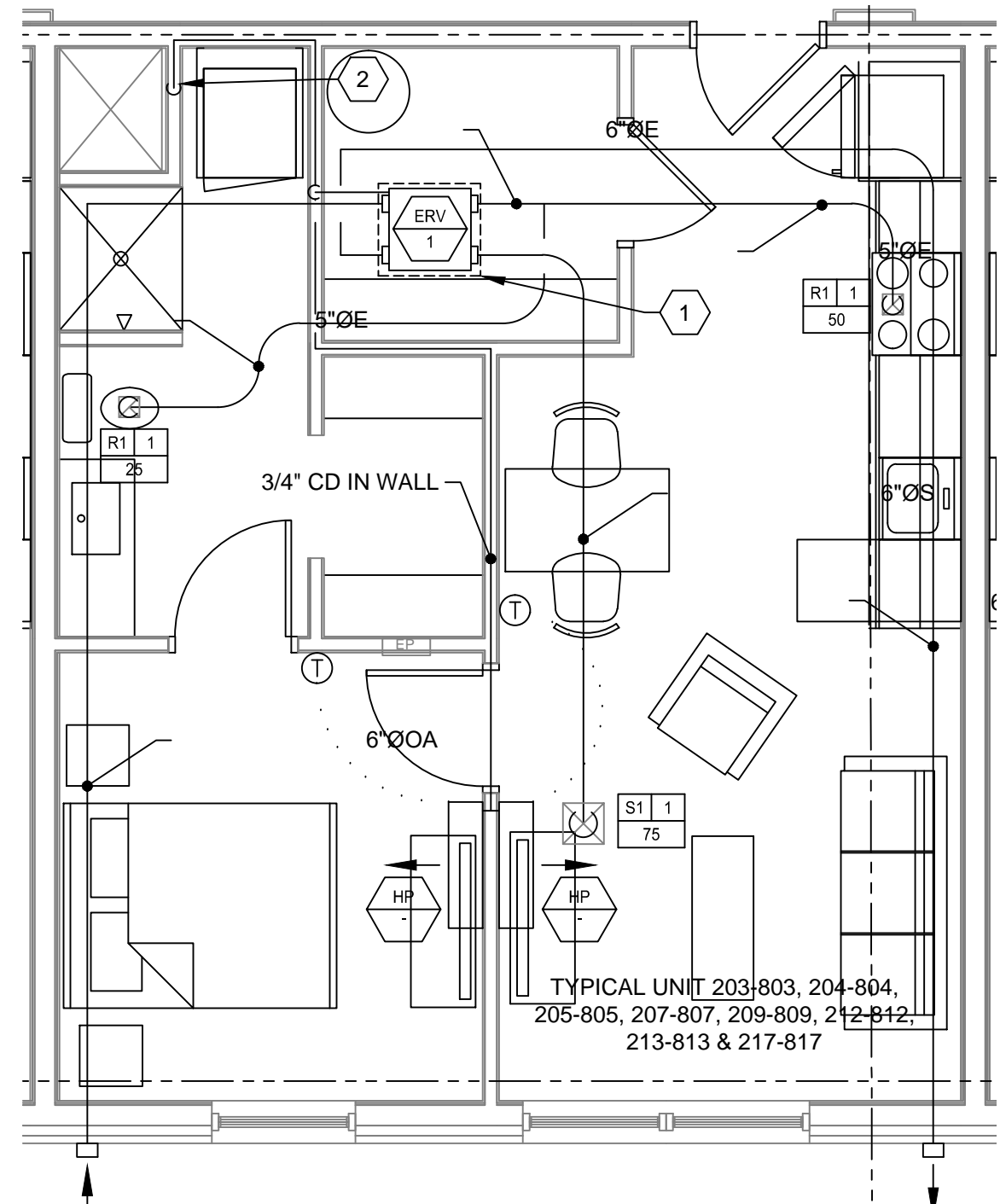
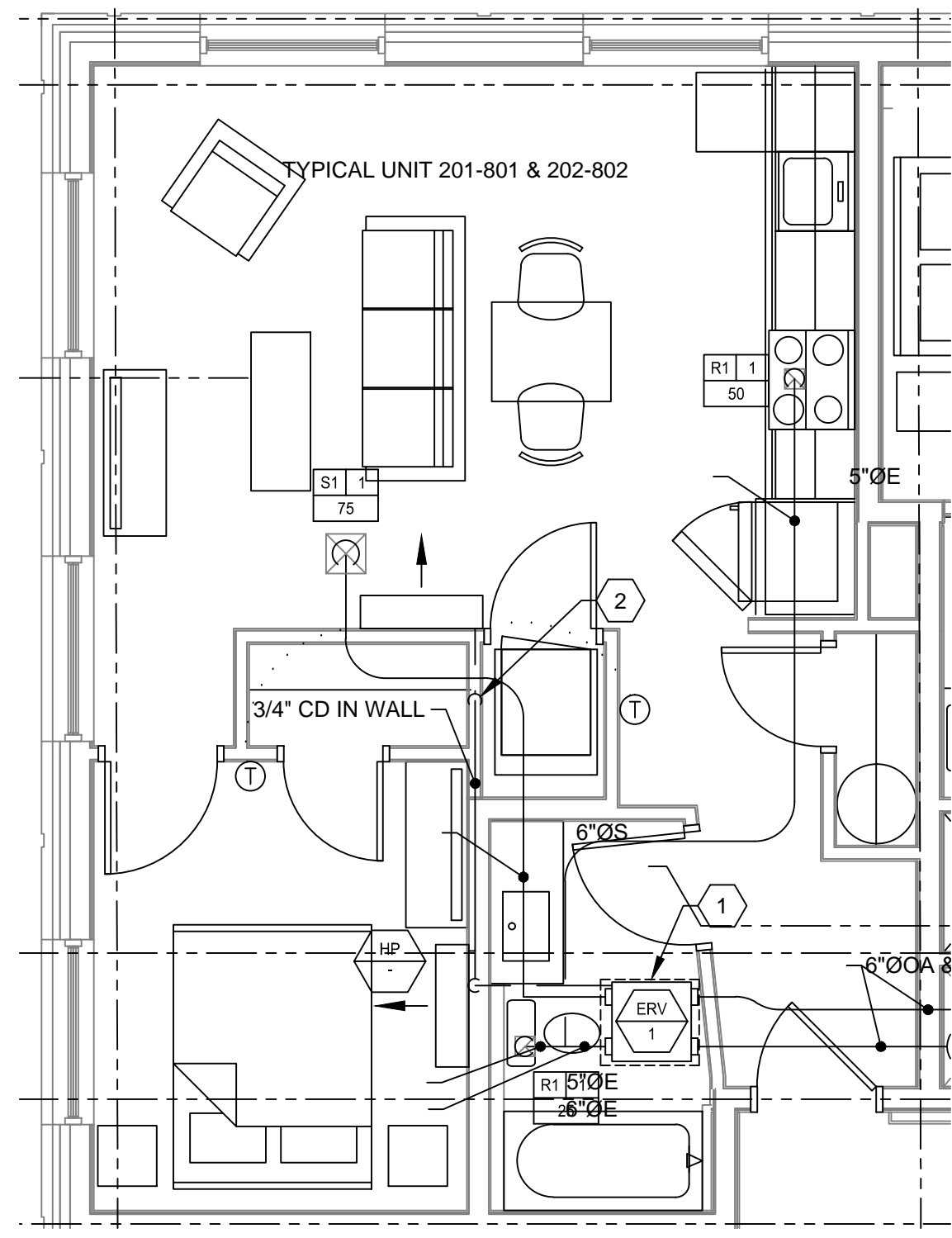
STATE OF MAINE
 REGISTERED PROFESSIONAL ENGINEER
 LICENSE NO. 11011
 MECHANICAL

| REVISIONS | DATE | BY | DESCRIPTION |
|-----------|------|----|-------------|
| | | | |

Date: 1/29/16
 Drawn By: SCL/WPS
 Checked By: WPS
 Project Mgr: Wes Strub
 Project No: 1523
 Cad File: 1508RMDWG
 Graphic Scale: 0' 1"

MECHANICAL TYPICAL SEVENTH AND EIGHT FLOOR PLAN AND ROOF PLAN
 667 CONGRESS STREET APARTMENTS
 Portland, ME

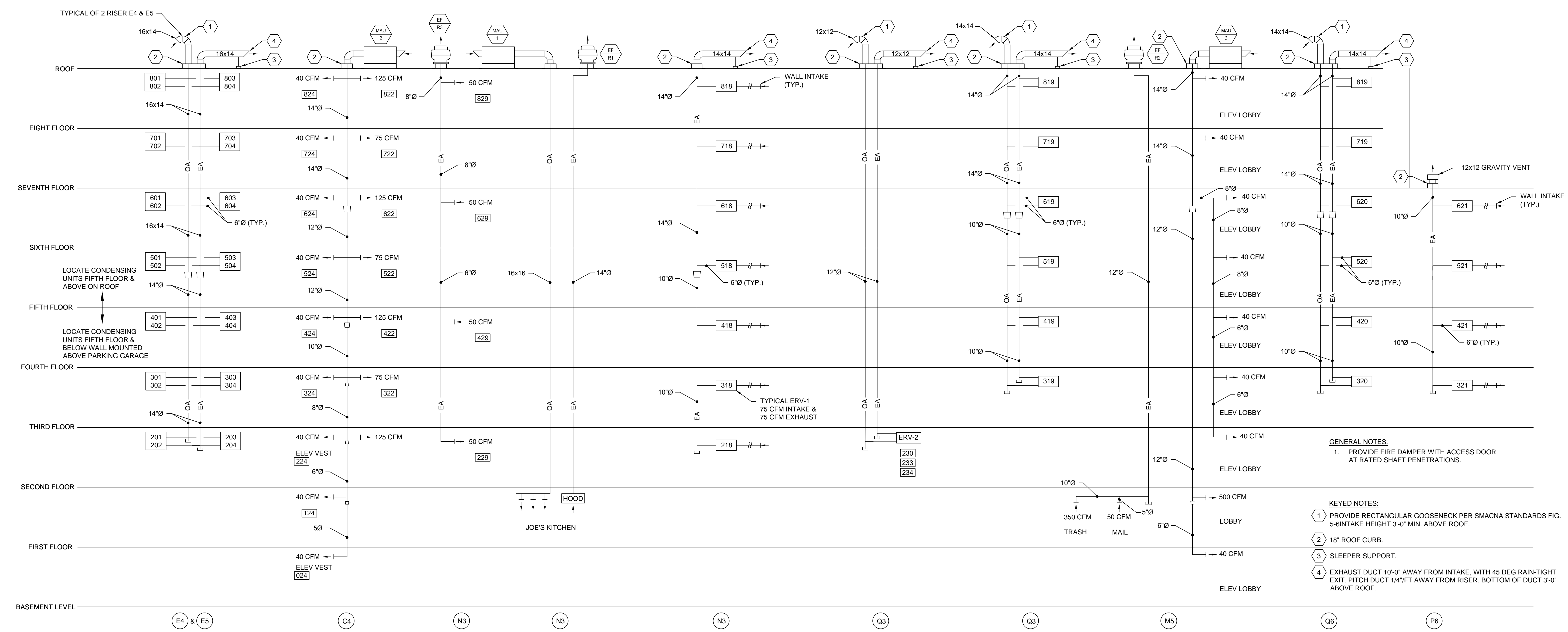
M1-2
 PERMIT SET ~ 29 January 2016 - NOT FOR CONSTRUCTION



- KEYED NOTES:
- 1 30"x30" FIRE RATED AP SIZED TO REMOVE ERV-1.
 - 2 3/4" CD PIPING DN IN WALL TO WASHER STAND PIPE.

ALL OTHER 1 BEDROOM & 2BEDROOM UNITS ARE SIMILAR IN LAYOUT

| | | | | | | | | | |
|------------|--|------------|--|------------|---|------------|--|------|-------------|
| F1 | MECHANICAL TYPICAL UNIT TYPE 201-801 & 202-802 | F3 | MECHANICAL TYPICAL UNIT TYPE 203-803, 204-804, 205-805, 207-807, 209-809, 212-812, 213-813 & 217-817 | F5 | MECHANICAL TYPICAL UNIT TYPE 210-810, 211-811, 214-814, & 215-815 | F7 | | F9 | KEYED NOTES |
| 1/4"=1'-0" | | 1/4"=1'-0" | | 1/4"=1'-0" | | 1/4"=1'-0" | | NONE | |



- GENERAL NOTES:
1. PROVIDE FIRE DAMPER WITH ACCESS DOOR AT RATED SHAFT PENETRATIONS.
- KEYED NOTES:
- 1 PROVIDE RECTANGULAR GOOSENECK PER SMACNA STANDARDS FIG. 5-6 INTAKE HEIGHT 3'-0" MIN. ABOVE ROOF.
 - 2 18" ROOF CURB.
 - 3 SLEEPER SUPPORT.
 - 4 EXHAUST DUCT 10'-0" AWAY FROM INTAKE, WITH 45 DEG RAIN-TIGHT EXIT. PITCH DUCT 1/4" FT AWAY FROM RISER. BOTTOM OF DUCT 3'-0" ABOVE ROOF.

REVISIONS

| NUMBER | DATE | BY | DESCRIPTION |
|--------|------|----|-------------|
| | | | |
| | | | |

Date: 1/29/16
 Drawn By: SCL/WPS
 Checked By: WPS
 Project Mgr: Wes Strim
 Project No: 1523
 Cad File: 1508R4DWG
 Graphic Scale: 0 1'

MECHANICAL RISER DIAGRAM AND MECHANICAL TYPICAL UNIT TYPES

667 CONGRESS STREET APARTMENTS
 Portland, ME

PERMIT SET ~ 29 January 2016 - NOT FOR CONSTRUCTION

M4-0

| PACKAGED ROOF TOP MAKE-UP AIR UNIT SCHEDULE | | | | |
|---|------------------------|--------------------------|--------------------------|--------------------------|
| GENERAL | ITEM | MUA-1 | MUA-2 | MUA-3 |
| | MOUNTING | ROOF | ROOF | ROOF |
| | MFR | DAKEN | DAKEN | DAKEN |
| | MODEL | DFS007A | DFS004A | DFS-005A |
| | EEP | 16.3 | 17.7 | 15.4 |
| ELECTRICAL | VOLTS-PH-HZ | 208-3-60 | 208-3-60 | 208-3-60 |
| | MOTOR | ECM | ECM | ECM |
| | FLA | 33.9 | 17.9 | 21.4 |
| | MCA | 45 | 25 | 30 |
| | DISCONNECT SW. FURN BY | UNIT MFR | UNIT MFR | UNIT MFR |
| | SMOKE DETECTOR (SD) | NO (<2,000 CFM) | NO (<2,000 CFM) | NO (<2,000 CFM) |
| FILTER SECTION | TYPE | MERV 8 | MERV 8 | MERV 8 |
| SUPPLY FAN | DRIVE | DIRECT DRIVE - ECM MOTOR | DIRECT DRIVE - ECM MOTOR | DIRECT DRIVE - ECM MOTOR |
| | AIRFLOW, cfm | 1,640 | 820 | |
| | ESP, in.wc. | 1" | 1" | 1" |
| GAS HEAT | MBTUH (OUTPUT) MAX | 160.0 | 96.0 | 96.0 |
| | MBTUH (INPUT) MAX | 200.0 | 120.0 | 120.0 |
| | EXCHANGER | SS | SS | SS |
| | GAS | NATURAL | NATURAL | NATURAL |
| | ENTERING AIR TEMP | -10F | -10F | -10F |
| | LEAVING AIR TEMP | 85.8 | 71.5 | 97.9 |
| | HEATING STAGES | MODULATING - 5 TO 1 | MODULATING - 25% TO 100% | MODULATING - 25% TO 100% |
| | MIN GAS INLET PRESSURE | 5" | 5" | 11" |
| | MAX GAS INLET PRESSURE | 11" | 11" | 11" |
| DX COOLING COIL | ENT. AIR DB/WB | 87 / 72 | 87 / 72 | 87 / 72 |
| | TMBTUH | 91.0 | 51.3 | 56.2 |
| | SMBTUH | 55.7 | 34.3 | 32.9 |
| | FACE AREA | 14.00 | 8.00 | 8.00 |
| | FACE VELOCITY | 110 | 226 | 137 |
| | REFRIGERANT | R410A | R410A | R410A |
| CONDENSING SECTION | AMBIENT DB, DEG-F | 95F | 95F | 95F |
| | COMPRESSOR TYPE | DIGITAL SCROLL | DIGITAL SCROLL | DIGITAL SCROLL |
| | MIN STAGES OF COOLING | MODULATING - 10% TO 100% | MODULATING - 10% TO 100% | MODULATING - 10% TO 100% |
| OVERALL DIMENSIONS | LENGTH | 107" | 67" | 67" |
| | WIDTH | 96.5" | 87" | 87" |
| | HEIGHT | 55.8" | 40.8" | 40.8" |
| | CURB HEIGHT | 24" | 24" | 24" |
| | OVERALL HEIGHT | 80" | 64.8" | 64.8" |
| | OPERATING WEIGHT (LBS) | 2,082 | 1,302 | 1,346 |

| ELECTRIC HEATER SCHEDULE | | | | | | | | | |
|--------------------------|---------------------------|-------------|-----------------|-------|-------|-------|--------|------------|--|
| TAG | SERVES | QMARK MODEL | TYPE | VOLTS | PHASE | WATTS | BTUH | NOTES | |
| EH-1 | VEST 007-107 | CWH3506F | WALL OR CEILING | 208 | 1 | 4,800 | 16,382 | 1, 2, 3, 4 | |
| EH-2 | N. STAIR 023 | CWH3506F | WALL OR CEILING | 208 | 1 | 4,800 | 16,382 | 1, 2, 3, 4 | |
| EH-3 | ELEV VEST 024 | CWH3408F | WALL OR CEILING | 208 | 1 | 4,000 | 13,652 | 1, 2, 3, 4 | |
| EH-4 | ELEV VEST 124 | CWH3408F | WALL OR CEILING | 208 | 1 | 4,000 | 13,652 | 1, 2, 3, 4 | |
| EH-5 | ELEV VEST 026 | CWH3408F | WALL OR CEILING | 208 | 1 | 4,000 | 13,652 | 1, 2, 3, 4 | |
| EH-6 | S. STAIR 025 | CWH3404F | WALL OR CEILING | 208 | 1 | 1,500 | 5,120 | 1, 2, 3, 4 | |
| EH-7 | CLOSET 004 | CWH3404F | WALL OR CEILING | 208 | 1 | 1,500 | 5,120 | 1, 2, 3, 4 | |
| EH-8 | CLOSET 233A | CWH3404F | WALL OR CEILING | 208 | 1 | 1,500 | 5,120 | 1, 2, 3, 4 | |
| EH-9 | ELEV VEST 726 | CWH3404F | WALL OR CEILING | 208 | 1 | 1,500 | 5,120 | 1, 2, 3, 4 | |
| EH-10 | ELEV VEST 626 | CWH3404F | WALL OR CEILING | 208 | 1 | 1,500 | 5,120 | 1, 2, 3, 4 | |
| EH-11 | JOES STORAGE 003 | IUH520 | HORIZ UH | 208 | 1 | 3,300 | 11,263 | | |
| EH-12 | MECH-STOR 002 | IUH520 | HORIZ UH | 208 | 1 | 3,800 | 12,969 | | |
| EH-13 | WATER SPRINKLER 002A | IUH520 | HORIZ UH | 208 | 1 | 2,500 | 8,533 | | |
| EH-14 | LOBBY 100 | CWH3404F | WALL OR CEILING | 208 | 1 | 1,500 | 5,120 | 1, 2, 3, 4 | |
| EH-15 | LOBBY 100 | CWH3404F | WALL OR CEILING | 208 | 1 | 1,500 | 5,120 | 1, 2, 3, 4 | |
| EH-16 | TRASH 102 | IUH724 | HORIZ UH | 208 | 1 | 7,500 | 25,598 | | |
| EH-17 | MECH 105 | CWH3404F | WALL OR CEILING | 208 | 1 | 1,500 | 5,120 | 1, 2, 3, 4 | |
| EH-18 | MECH 106 | CWH3404F | WALL OR CEILING | 208 | 1 | 1,500 | 5,120 | 1, 2, 3, 4 | |
| EH-19 | JOES 108 - EAST ENTRANCE | CWH3404F | WALL OR CEILING | 208 | 1 | 1,500 | 5,120 | 1, 2, 3, 4 | |
| EH-20 | JOES 108 - NORTH ENTRANCE | CWH3404F | WALL OR CEILING | 208 | 1 | 1,500 | 5,120 | 1, 2, 3, 4 | |

- NOTES:
- COORDINATE WALL RECESS.
 - COORDINATE LOCATION WITH REFLECTED CEILING PLAN. PROVIDE T-BAR ADAPTER AS REQUIRED.
 - PROVIDE WALL OR CEILING MOUNT. WALL MOUNT PREFERRED.
 - CONFIRM ELECTRICAL CHARACTERISTICS.

| FINNED TUBE RADIATION SCHEDULE (HOT WATER) | | | | | | | | | | | |
|--|--------------------|--------|--------|-------|-----|------|-----------|------------------------------|----------------|--------|-------|
| TAG | STERLING MODEL No. | LENGTH | BTU/FT | BTU | GPM | AWT | ENCLOSURE | ELEMENT | FIN DIMENSIONS | FIN/SQ | NOTES |
| FT-1 | BARE ELEMENT "A" | 6 FT | 500 | 3,000 | 1.5 | 140F | NONE | 3/4" CU, 0.02" FIN THICKNESS | 3-1/4" SQ | 50 | |

- NOTES:
- PROVIDE BARE ELEMENT CEILING HANGERS.

| ENERGY RECOVERY UNIT SCHEDULE | | | |
|-------------------------------|-----------------------------|-----------------------|------------------------|
| GENERAL | TAG | ERV-1 | ERV-2 |
| QTY | | 139 | 1 |
| SERVES | | APARTMENTS | FITNESS-OFFICE-LOUNGE |
| TYPE | | FIXED-PLATE ENTHALPIC | FIXED-PLATE ENTHALPIC |
| MFR | | LIFEBREATH | RENEWAIRE |
| MODEL | | 120 ERV | HE1X1NH |
| FAN SPEED CONTROL | WALL CONTROLLER | LOW - HI, Humidity | ECM MOTOR |
| MOTOR | TYPE | Motorized Impeller | ECM |
| OUTSIDE AIR FAN | AIRFLOW, cfm | 75 | 580 |
| | | | Lounge: 140 CFM OA |
| | | | Mgmt Office: 35 CFM OA |
| | | | Fitness: 405 CFM OA |
| | ESP, in.wc. | 1" | 1" |
| EXHAUST AIR FAN | AIRFLOW, cfm | 75 | 580 |
| | ESP, in.wc. | 1.0" | 0.85" |
| OVERALL DIMENSIONS | LENGTH | 28-5/8" | 44-1/8" |
| | WIDTH | 18-1/4" | 15-7/8" |
| | HEIGHT | 9-1/4" | 36-3/8" |
| | OPERATING WEIGHT, lbs. | 38 LBS. | 150 LBS. |
| | DUCT CONNECTIONS - DIAMETER | 5" | 10" |
| HEAT RECOVERY CORE | SENSIBLE RECOVERY % WINTER | 74% | 74% |
| | TOTAL RECOVERY % WINTER | 62% | 68% |
| | TOTAL RECOVERY % SUMMER | 35% | 56% |
| | FROST CONTROL | RECIRCULATION | NOT NEEDED |
| FILTERS | TYPE | WASHABLE FOAM | MERV 8 |
| ELECTRICAL DATA | V-PH-HZ | 120/1/60 | 208/1/60 |
| | MCA | 1.7 | 10.1 |
| | MOP | | 15 |
| | DISCONNECT | PLUG/15 Amp Breaker | FACTORY FUSED D/S |

- PROVIDE FACTORY OPTIONS
1. SEE SPEC 237200

| FAN SCHEDULE | | | | | | | | | | | | | | | | |
|--------------|----------|-------------------------|-----------|---------------|------------------------------|--------|--------|--------------|---------|----------|-------------------------------|----------------------|----------|-----------|---------------|-----------------|
| TAG | LOCATION | SERVES | MFR | MODEL | TYPE | DRIVE | CFM | SP (IN. WC.) | MAX BHP | MOTOR HP | ELECTRICAL | | | | | |
| | | | | | | | | | | | VFD FURN. BY | DISC. SWITCH FURN BY | VOLTS/PH | MAX SONES | WEIGHT (LBS.) | DAMPER |
| EF-B1 | BASEMENT | GARAGE VENTILATION | GREENHECK | SE-30-620-B20 | WALL PROPELLOR | DIRECT | 10,000 | 0.5" | 1.86 | 2 | DIV 26 | FAN MFR | 208/1 | 25.0 | 230 | NO |
| EF-B2 | BASEMENT | WATER - SPRINKLER | GREENHECK | SE1-14-436-VG | WALL PROPELLOR | DIRECT | 1,500 | 0.5" | 0.34 | 1/2 | BUILT IN ECM | FAN MFR | 208/1 | 13.8 | 75 | BDD BY FAN MFR. |
| EF-R1 | ROOF | JOE'S KITCHEN HOOD | GREENHECK | CUE-131-VG | GREASE EXHAUST | DIRECT | 1,390 | 1.5" | 0.57 | 3/4 | BUILT IN ECM | FAN MFR | 208/1 | 14.2 | 90 | NO |
| EF-R2 | ROOF | TRASH ROOM, MAIL ROOM | GREENHECK | CUE-101-VG | CENT UPBLAST EXHAUST | DIRECT | 450 | 1.5" | 0.27 | 1/2 | BUILT IN ECM | FAN MFR | 208/1 | 14.2 | 75 | NO |
| EF-R3 | ROOF | JANITORS CLOSET | GREENHECK | CUE-85-VG | CENT UPBLAST EXHAUST | DIRECT | 200 | 7/8" | 0.07 | 1/6 | BUILT IN ECM | FAN MFR | 208/1 | 8.9 | 41 | NO |
| EF-1 | 1ST FLR | JOE'S BATHROOM | GREENHECK | CSP-B150 | CEILING INLINE DUCTED | DIRECT | 140 | 0.5" | --- | 129V | BUILT IN SPEED CONTROL | FAN MFR | 115/1 | 2.0 | 20 | BDD BY FAN MFR. |
| SF-R1 | ROOF | STARWELL PRESSURIZATION | GREENHECK | SVD-18-VG | BACKWARD INCLINE CENTRIFUGAL | BELT | 4,142 | 1.0" | 1.41 | 2 | VARI GREEN PRESS. SPD CONTROL | FAN MFR | 208/1 | 36.0 | 196 | MOD WD-340 |
| SF-R2 | ROOF | STARWELL PRESSURIZATION | GREENHECK | SVD-18-VG | BACKWARD INCLINE CENTRIFUGAL | BELT | 4,142 | 1.0" | 1.41 | 5 | VARI GREEN PRESS. SPD CONTROL | FAN MFR | 208/1 | 36.0 | 196 | MOD WD-340 |

| DUCTLESS SPLIT SYSTEM SCHEDULE | | | | | | | | | | | | | | | | |
|--------------------------------|---------------|-----|--------------|------------|----------|----------|--------|-----------------------|------------------|-----------------|------------------|------|------------|-----|-----------|----------------------------|
| UNITS | NOTE | QTY | COND UNIT | LR EVAP | BR EVAP | BR EVAP | EVAP 4 | NOMINAL HEATING AT SF | HEATING DE-RATED | NOMINAL COOLING | COOLING DE-RATED | HSPF | ELECTRICAL | MCA | FUSE AMPS | CONDENSING UNIT DIMENSIONS |
| 201 TO 801 | CORNER | 7 | MKZ-3C24NAHZ | MSZ-GE15 | MSZ-GE06 | ----- | ----- | 25,000 | 21,250 | 23,600 | 21,057 | 10.0 | 208/1/60 | 30 | 40 | 37.41"W x 41.26"H x 13.6"D |
| 202 TO 802 | CORNER | 7 | MKZ-3C24NAHZ | MSZ-GE15 | MSZ-GE06 | ----- | ----- | 25,000 | 21,250 | 23,600 | 21,057 | 10.0 | 208/1/60 | 30 | 40 | 37.41"W x 41.26"H x 13.6"D |
| 203 TO 803 | WEST | 7 | MKZ-3C24NAHZ | MSZ-GE15 | MSZ-GE06 | ----- | ----- | 25,000 | 21,250 | 23,600 | 21,057 | 10.0 | 208/1/60 | 30 | 40 | 37.41"W x 41.26"H x 13.6"D |
| 204 TO 804 | EAST | 7 | MKZ-3C24NAHZ | MSZ-GE15 | MSZ-GE06 | ----- | ----- | 25,000 | 21,250 | 23,600 | 21,057 | 10.0 | 208/1/60 | 30 | 40 | 37.41"W x 41.26"H x 13.6"D |
| 205 TO 805 | WEST | 7 | MKZ-3C24NAHZ | MSZ-GE15 | MSZ-GE06 | ----- | ----- | 25,000 | 21,250 | 23,600 | 21,057 | 10.0 | 208/1/60 | 30 | 40 | 37.41"W x 41.26"H x 13.6"D |
| 206 TO 806 | EAST | 7 | MKZ-3C24NAHZ | MSZ-GE15 | MSZ-GE06 | ----- | ----- | 25,000 | 21,250 | 23,600 | 21,057 | 10.0 | 208/1/60 | 30 | 40 | 37.41"W x 41.26"H x 13.6"D |
| 207 TO 807 | WEST | 7 | MKZ-3C24NAHZ | MSZ-GE15 | MSZ-GE06 | ----- | ----- | 25,000 | 21,250 | 23,600 | 21,057 | 10.0 | 208/1/60 | 30 | 40 | 37.41"W x 41.26"H x 13.6"D |
| 208 TO 808 | EAST | 7 | MKZ-3C24NAHZ | MSZ-GE15 | MSZ-GE06 | ----- | ----- | 25,000 | 21,250 | 23,600 | 21,057 | 10.0 | 208/1/60 | 30 | 40 | 37.41"W x 41.26"H x 13.6"D |
| 209 TO 809 | WEST | 7 | MKZ-3C24NAHZ | MSZ-GE15 | MSZ-GE06 | ----- | ----- | 25,000 | 21,250 | 23,600 | 21,057 | 10.0 | 208/1/60 | 30 | 40 | 37.41"W x 41.26"H x 13.6"D |
| 210 TO 810 | STUDIO | 7 | MSZ-FH12NA | MUZ-FH12NA | ----- | ----- | ----- | 13,600 | 11,560 | 12,000 | 10,200 | 12.5 | 208/1/60 | 11 | 15 | 37.41"W x 41.26"H x 13.6"D |
| 211 TO 811 | STUDIO | 7 | MSZ-FH12NA | MUZ-FH12NA | ----- | ----- | ----- | 13,600 | 11,560 | 12,000 | 10,200 | 12.5 | 208/1/60 | 11 | 15 | 37.41"W x 41.26"H x 13.6"D |
| 212 TO 812 | EAST | 7 | MKZ-3C24NAHZ | MSZ-GE15 | MSZ-GE06 | ----- | ----- | 25,000 | 21,250 | 23,600 | 21,057 | 10.0 | 208/1/60 | 30 | 40 | 37.41"W x 41.26"H x 13.6"D |
| 213 TO 813 | WEST | 7 | MKZ-3C24NAHZ | MSZ-GE15 | MSZ-GE06 | ----- | ----- | 25,000 | 21,250 | 23,600 | 21,057 | 10.0 | 208/1/60 | 30 | 40 | 37.41"W x 41.26"H x 13.6"D |
| 214 TO 814 | SUITE | 7 | MKZ-3C24NAHZ | MSZ-GE15 | MSZ-GE06 | ----- | ----- | 25,000 | 21,250 | 23,600 | 21,057 | 10.0 | 208/1/60 | 30 | 40 | 37.41"W x 41.26"H x 13.6"D |
| 215 TO 815 | STUDIO | 7 | MSZ-FH12NA | MUZ-FH12NA | ----- | ----- | ----- | 13,600 | 11,560 | 12,000 | 10,200 | 12.5 | 208/1/60 | 11 | 15 | 37.41"W x 41.26"H x 13.6"D |
| 216 TO 816 | EAST | 7 | MKZ-3C24NAHZ | MSZ-GE15 | MSZ-GE06 | ----- | ----- | 25,000 | 21,250 | 23,600 | 21,057 | 10.0 | 208/1/60 | 30 | 40 | 37.41"W x 41.26"H x 13.6"D |
| 217 TO 817 | WEST | 5 | MKZ-3C24NAHZ | MSZ-GE15 | MSZ-GE06 | ----- | ----- | 25,000 | 21,250 | 23,600 | 21,057 | 10.0 | 208/1/60 | 30 | 40 | 37.41"W x 41.26"H x 13.6"D |
| 717 TO 817 | STUDIO | 2 | MSZ-FH12NA | MUZ-FH12NA | ----- | ----- | ----- | 13,600 | 11,560 | 12,000 | 10,200 | 12.5 | 208/1/60 | 11 | 15 | 37.41"W x 41.26"H x 13.6"D |
| 318 TO 618 | STUDIO CORNER | 4 | MSZ-FH12NA | MUZ-FH12NA | ----- | ----- | ----- | 13,600 | 11,560 | 12,000 | 10,200 | 12.5 | 208/1/60 | 11 | 15 | 37.41"W x 41.26"H x 13.6"D |
| 718 TO 818 | CORNER | 2 | MKZ-3C24NAHZ | MSZ-GE15 | MSZ-GE06 | ----- | ----- | 25,000 | 21,250 | 23,600 | 21,057 | 10.0 | 208/1/60 | 30 | 40 | 37.41"W x 41.26"H x 13.6"D |
| 319 TO 619 | 2 BR SUITE | 4 | MKZ-3C30AHZ | MSZ-GE24 | MSZ-GE06 | MSZ-GE06 | ----- | 28,600 | | | | | | | | |