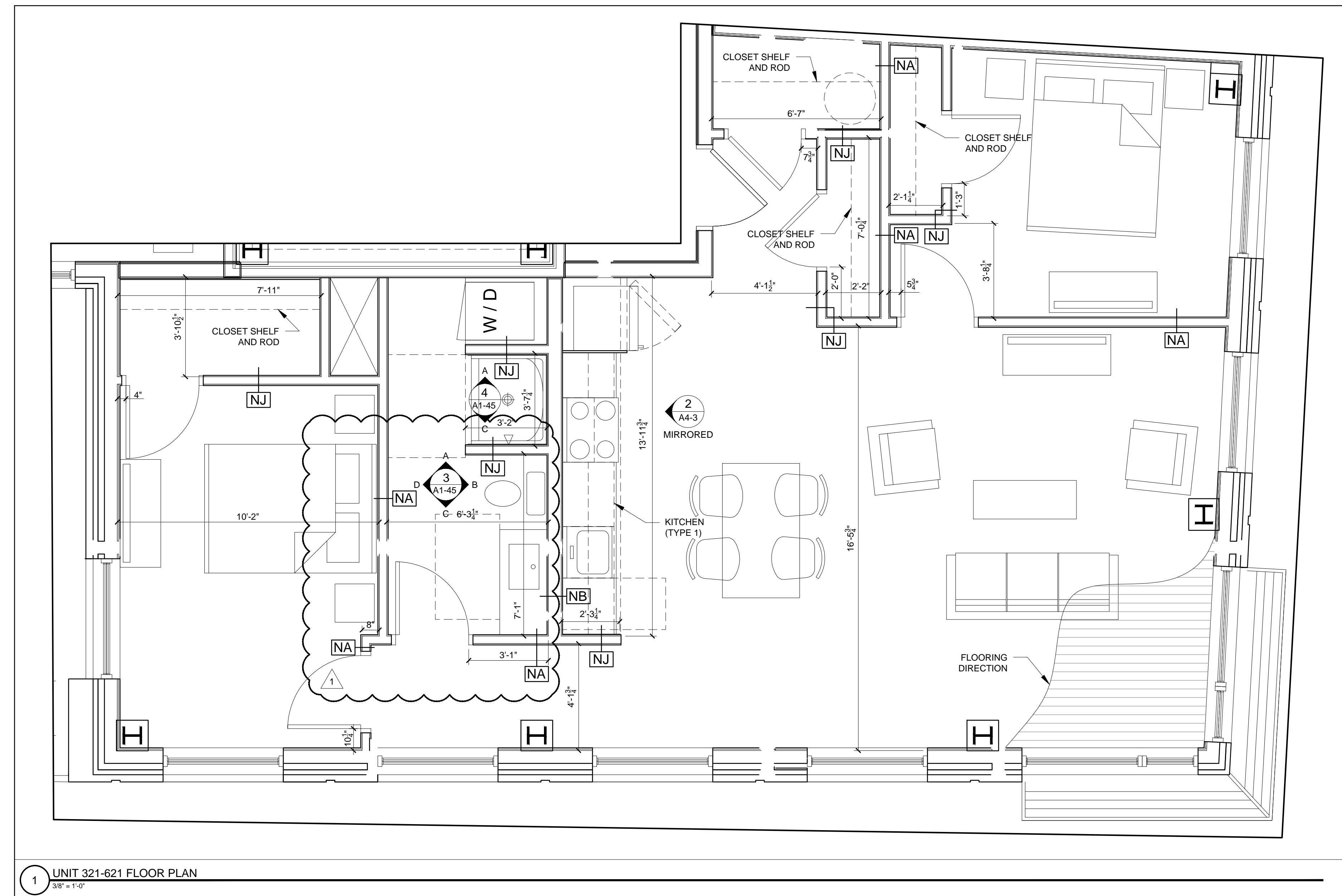
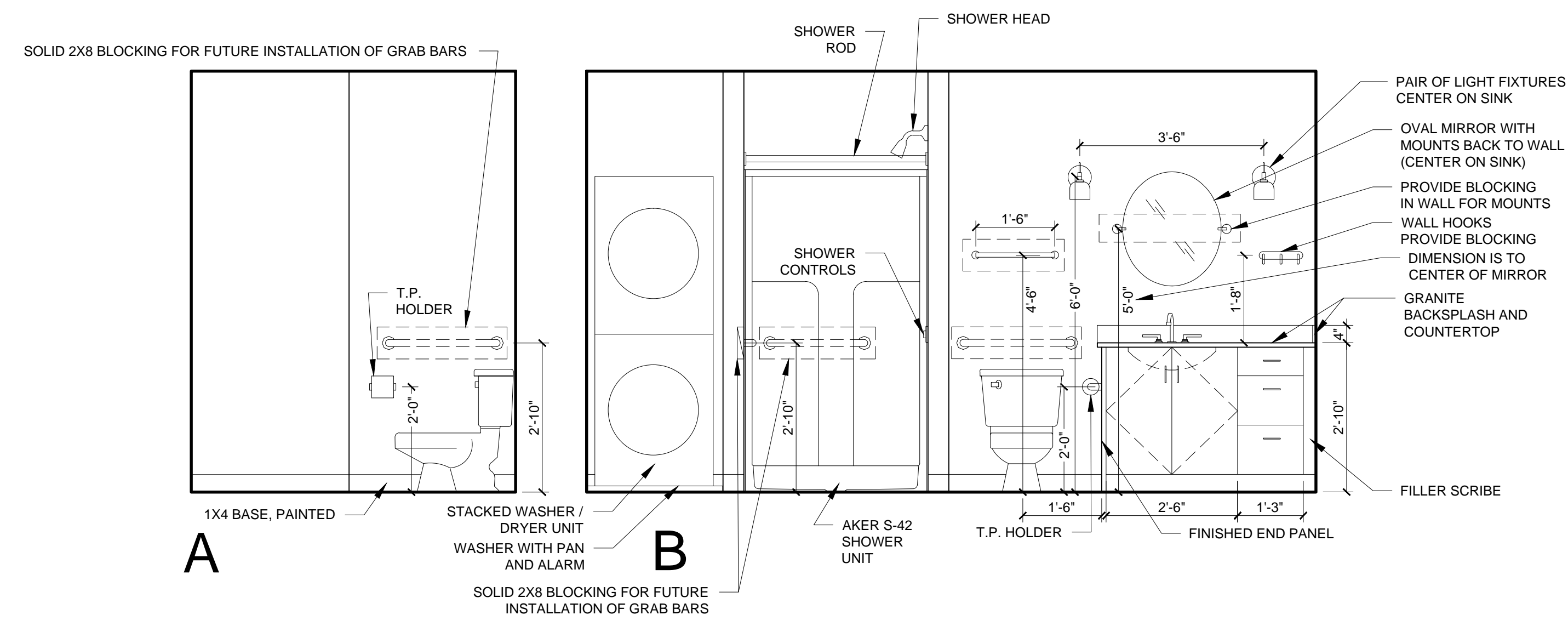


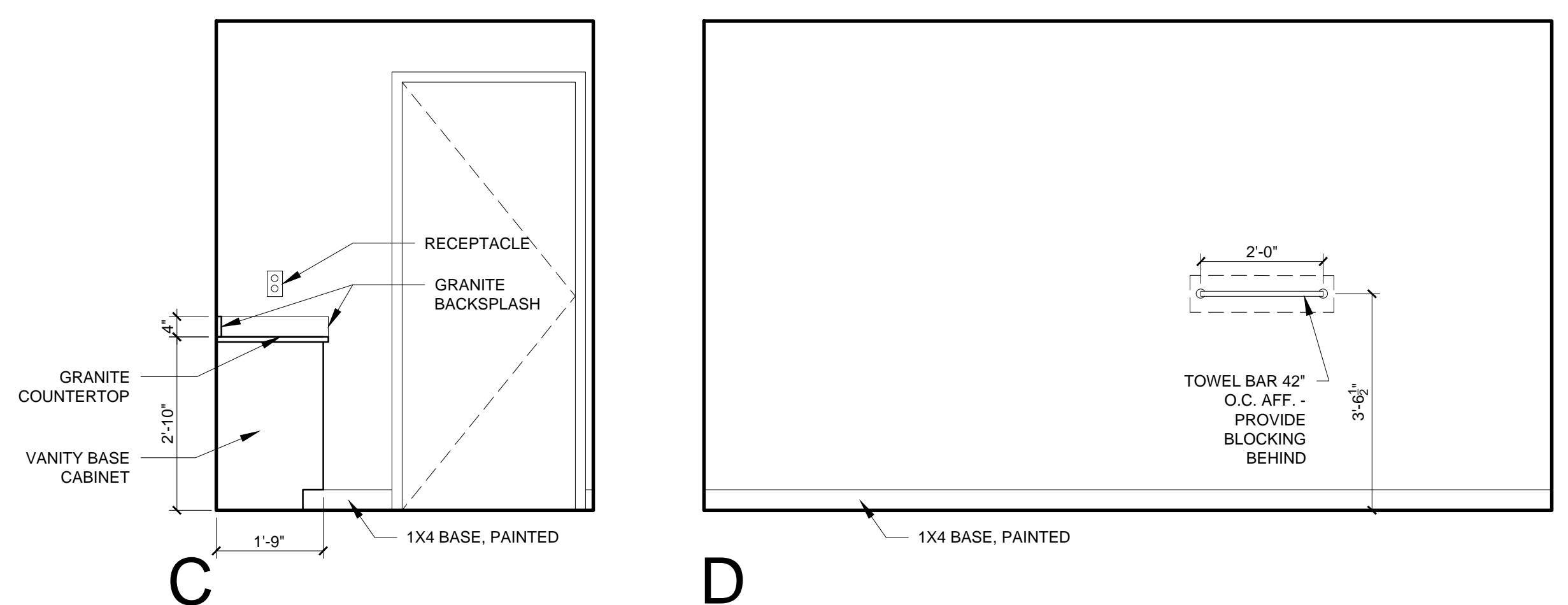
2 UNIT 321-621 REFLECTED CEILING PLAN
 3/8" = 1'-0"



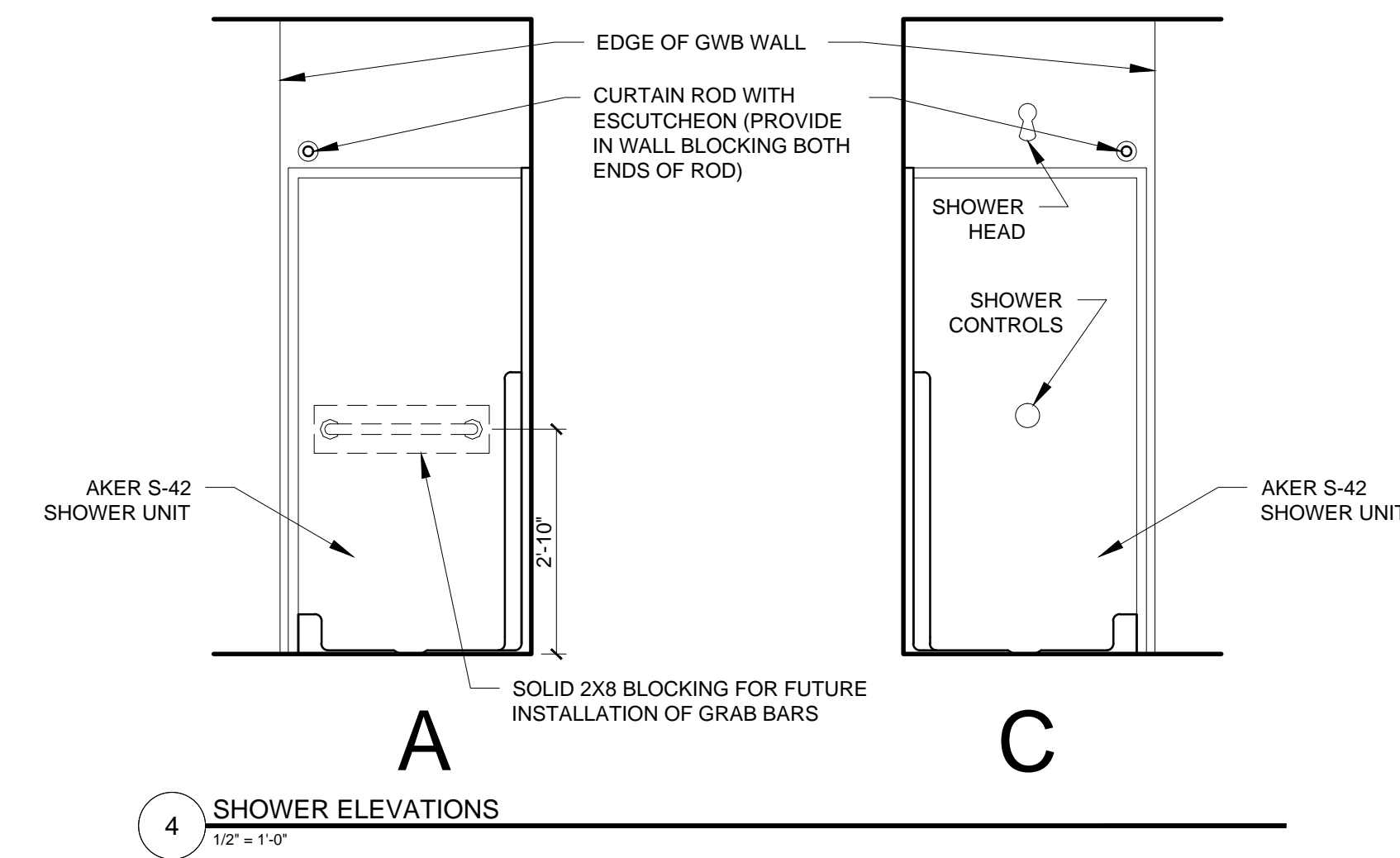
1 UNIT 321-621 FLOOR PLAN
 3/8" = 1'-0"



3 UNIT 320-620 INTERIOR ELEVATIONS
 1/2" = 1'-0"



3 UNIT 320-620 INTERIOR ELEVATIONS CONTINUED
 1/2" = 1'-0"



4 SHOWER ELEVATIONS
 1/2" = 1'-0"

- REFLECTED CEILING PLAN NOTES
- 1.) G.C. TO COORDINATE LOCATIONS OF PLUMBING CLEAN OUTS WITH ACCESS PANELS AS SHOWN ON REFLECTED CEILING PLANS
 - 2.) G.C. TO PROVIDE ACCESS PANELS AS REQUIRED FOR ALL ELEMENTS (SPRINKLER, VALVES, ETC) NOT SHOWN ON THIS REFLECTED CEILING PLAN)
 - 3.) G.C. TO PROVIDE METAL FRAMING AND BLOCKING REQUIRED FOR ALL ACCESS PANELS AND CONTROL JOINTS
 - 4.) ALL ACCESS PANELS TO BE FIRE RATED TO MATCH THE CEILING THEY ARE INSTALLED WITHIN

- UNIT NOTES
- 1.) CEILING HEIGHTS, WINDOW HEAD AND SILL HEIGHTS VARY FROM FLOOR TO FLOOR, INTERIOR ELEVATIONS GRAPHICALLY DEPICT ONE FLOOR ONLY, FOR HEIGHT INFORMATION REFER TO BUILDING SECTIONS AND WALL SECTIONS
 - 2.) G.C. TO CONFIRM AND COORDINATE ALL ROUGH FRAMING DIMENSIONS FOR TUBS, SHOWERS, BUILT-IN FIXTURES ETC. G.C. TO CONFIRM AND COORDINATE ALL CABINERY AND APPLIANCE DIMENSIONS
 - 3.) PROVIDE APPROPRIATE FIRE TREATED BLOCKING IN WALLS BEHIND ALL FIXTURES, PARTITIONS AND ACCESSORIES. BLOCKING FOR GRAB BARS TO BE PROVIDED IN WALLS OF BATHROOMS IN ALL UNITS
 - 4.) PROVIDE MOISTURE RESISTANT GWB AT ALL WALLS AND CEILING IN BATHROOMS TYPICAL
 - 5.) SET ALL CLOTHES WASHERS IN PANS WITH WATER SENSOR
 - 6.) REFER TO ELECTRICAL AND MECHANICAL DRAWINGS FOR ADDITIONAL INFORMATION REGARDING LIGHTING, DIFFUSERS, ETC.
 - 7.) PROVIDE FIRE EXTINGUISHER ON BRACKET IN BASE CABINET BELOW KITCHEN SINK - TYPICAL
 - 8.) HANG HOT WATER HEATER FROM DECK ABOVE. (SEE DETAIL ON TYPICAL UNIT DETAILS SHEET)
 - 9.) WHERE DROPPED SOFFITS AND CEILING ARE SHOWN, THESE ARE IN ADDITION TO THE FIRE RATED GWB CEILING ABOVE WHICH IS PART OF THE RATED ASSEMBLY
 - 10.) WHERE PLUMBING VALVES (TUB, SHOWER, ETC) ARE LOCATED IN FIRE RATED WALLS, PROVIDE FIRE RATED BOX IN WALL FOR VALVE TO BE INSTALLED WITHIN

- CABINETS AND APPLIANCE ABBREVIATIONS
- DB = DRAWER BASE
 - DRB = DOOR BASE
 - SB = SINK BASE
 - WC = WALL CABINET
 - WC(24) = WALL CABINET 24" DEEP
 - PJ = PANTRY UNIT 24" DEEP
 - OS = OPEN SHELVES
 - RA = RANGE
 - DW = DISHWASHER
 - REF = REFRIGERATOR

REFLECTED CEILING PLAN AND LIGHTING LEGEND

SYMBOL	TAG	DESCRIPTION
●	A	SURFACE MOUNT - TBD
○	B	SURFACE MOUNTED - TBD
○	C	SURFACE MOUNT - IN CLOSETS
○	D	SURFACE MOUNTED ON WALL ABOVE DOOR
○	E	WALL SCONCE IN BATHROOM OVER VANITY
○	F	SURFACE MOUNT - WET LOCATION
○	H	SURFACE MOUNT CENTER IN BEDROOMS
○	J	SURFACE MOUNT - WET LOCATION
○	K	EXTERIOR CUT OFF DOWN LIGHT
■		CEILING GRILLE