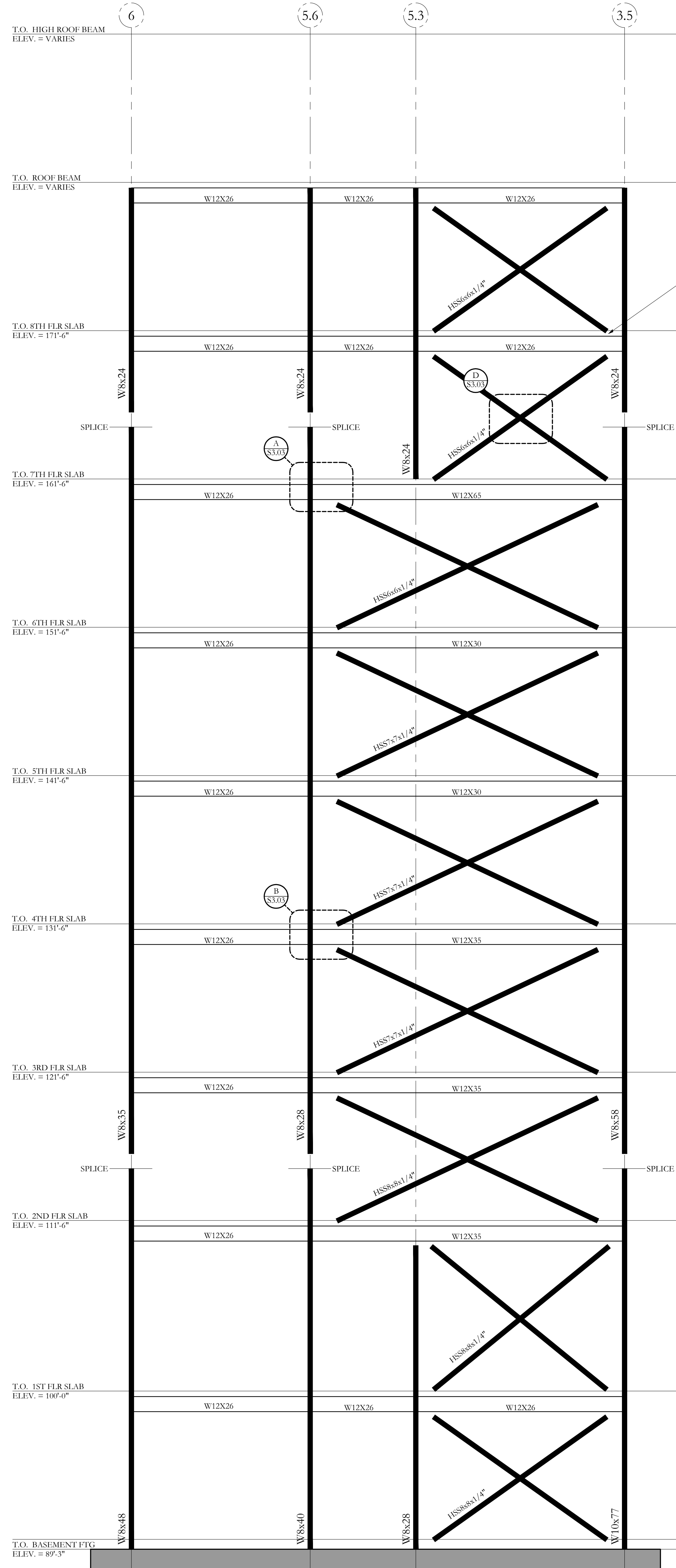


SOUTH TOWER BRACE ELEV: GRIDS Q

NOTES:

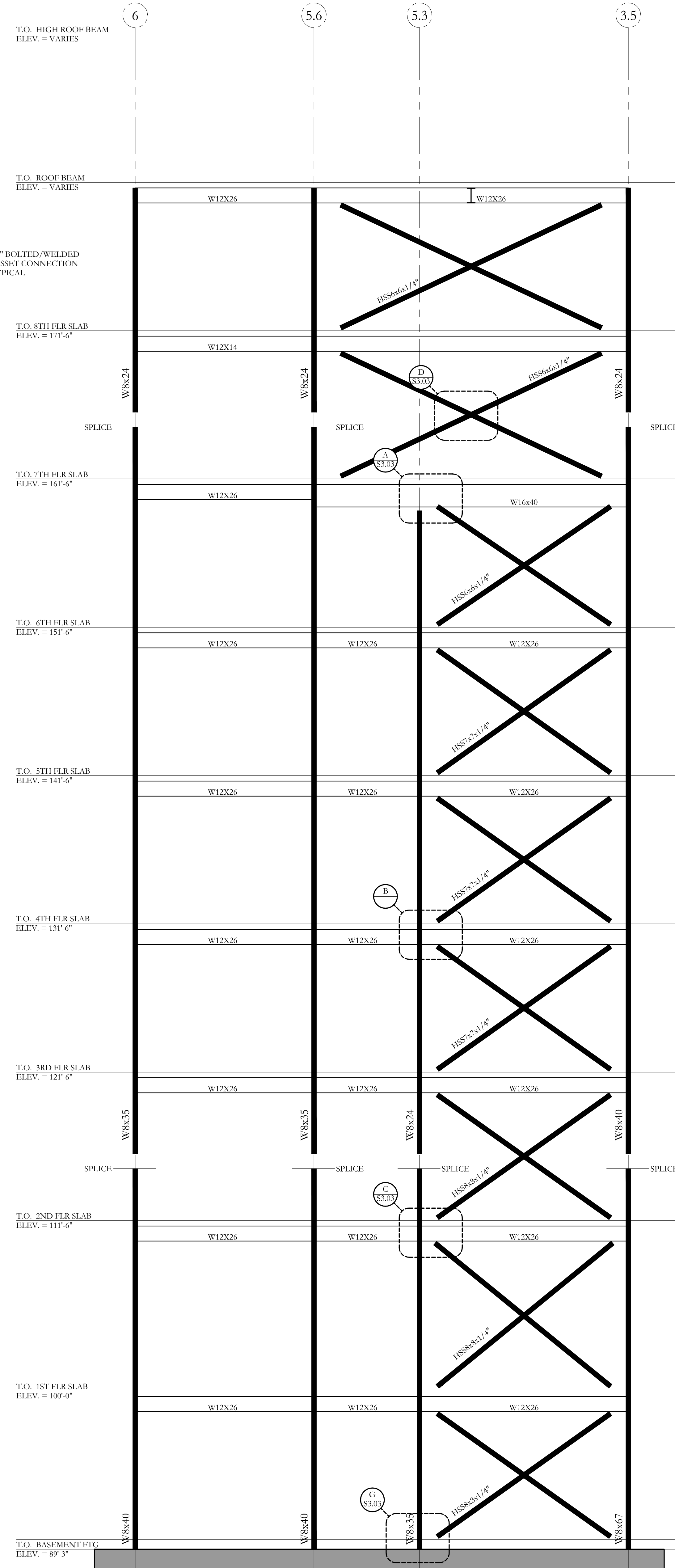
SCALE: 1/4"=1'-0"



SOUTH TOWER BRACE ELEV: GRID N

NOTES:

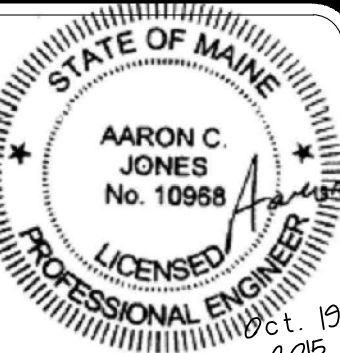
SCALE: 1/4"=1'-0"



SOUTH TOWER BRACE ELEV: GRID P

NOTES:

SCALE: 1/4"=1'-0"



© 2015 RYAN SENATORE ARCHITECTURE

667 CONGRESS STREET  
APARTMENTS  
PORTLAND, MAINE



RYAN SENATORE  
ARCHITECTURE  
667 CONGRESS STREET  
PORTLAND, MAINE 04101  
207-650-6414  
rsenatore@architect.com

CONSULTANTS:  
STRUCTURAL  
Integrity  
7 Oak Street  
Portland, ME 04101  
207-774-4614

REVISIONS:

DATE: 2 NOVEMBER 2015

PROJECT No. 1503

DRAWN BY: MKL

CHECKED BY: AGJ

SCALE: AS NOTED

SHEET TITLE:  
BRACE FRAME  
ELEVATIONS

S3.01

Structural  
Integrity  
Consulting Engineers, Inc.  
77 Oak Street  
Portland, ME 04101  
p. 207-774-4614  
f. 866-793-7835  
www.structuralintegrity.com

BUILD WITH CONFIDENCE  
© 2015 Structural Integrity Consulting Engineers, Inc.  
SI-15-0038