

© 2015 RYAN SENATORE ARCHITECTURE

667 CONGRESS STREET
APARTMENTS
PORTLAND, MAINE



RYAN SENATORE ARCHITECTURE
667 CONGRESS STREET
PORTLAND, MAINE 04101
207-690-6414
senatorearchitecture.com

CONSULTANTS:
STRUCTURAL: Structural Integrity
1 Oak Street
Portland, ME 04101
207-774-6014

2
2/17/16

REVISIONS:
1. 1/5/16
2. 2/17/16

DATE: 2 NOVEMBER 2015

PROJECT No. 1503

DRAWN BY: MKL

CHECKED BY: AGJ

SCALE: AS NOTED

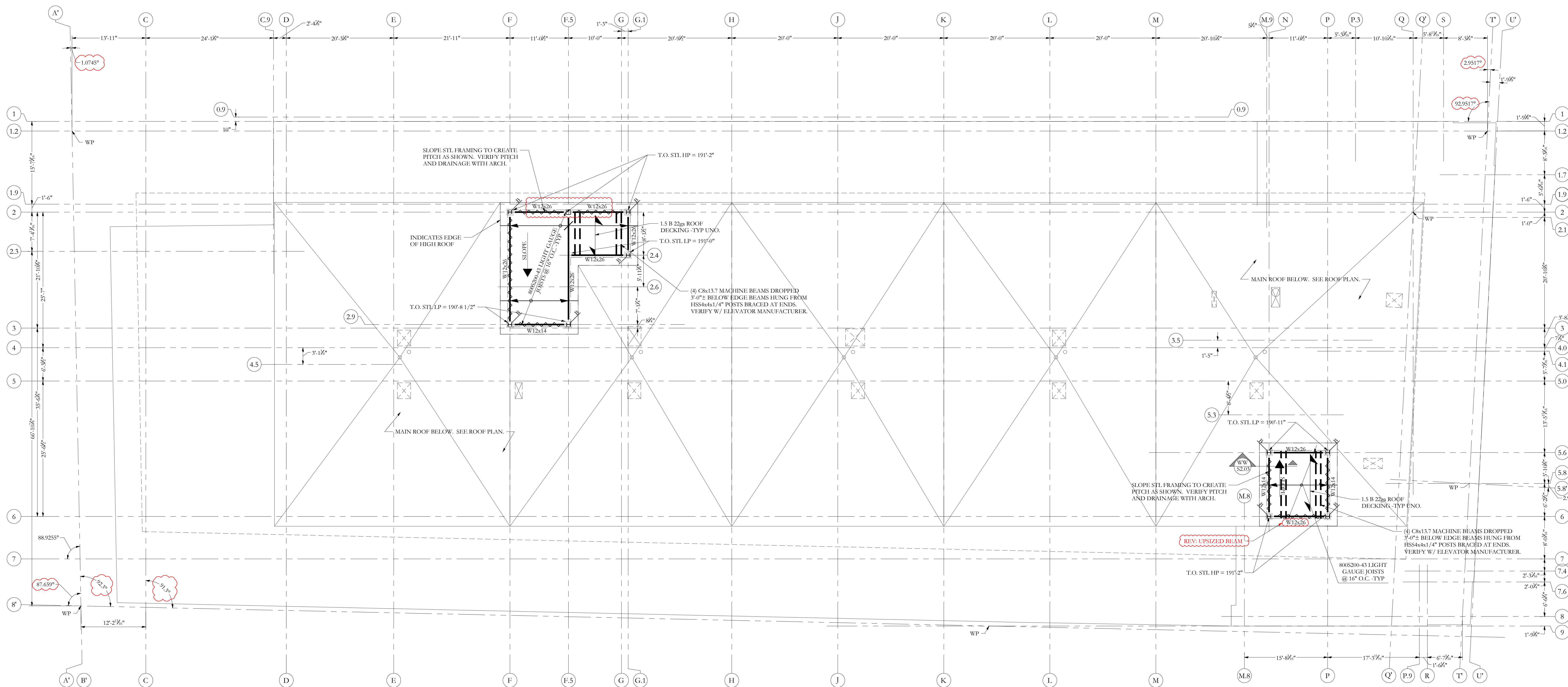
SHEET TITLE:

HIGH ROOF
FRAMING PLAN

1
1/5/16

S1.10

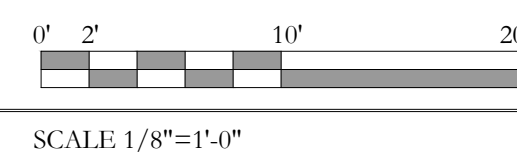
Structural Integrity
Consulting Engineers, Inc. BUILD WITH CONFIDENCE
77 Oak Street
Portland, ME, 04101
p. 207-774-6014
e. 866-793-7835
www.structuralintegrity.com
© 2015 Structural Integrity Consulting Engineers, Inc. SE-15-0038



HIGH ROOF FRAMING PLAN



- NOTES:
- SEE SHEET S-1.0 FOR GENERAL STRUCTURAL NOTES AND ADDITIONAL INFORMATION.
 - COORDINATE ALL MECHANICAL & CHASES ETC. W/ ARCH AND MECHANICAL DRAWINGS -TYP.
 - VERIFY ROOFTOP MECHANICAL EQUIPMENT WEIGHTS PRIOR TO CONSTRUCTION.
 - VERIFY ROOF PITCH AND DRAINAGE W/ ARCH -TYP.
 - ALL SMALL FRAME BEAMS @ OPENINGS ETC. SHALL BE W8x28 -TYP UNO
 - ALL ROOF DECKING SHALL BE 1.5" B 22 STEEL DECK (22GA) W/ 5/8" O PUDDLE WELDS @ 12", (36/4 PATTERN) AND (3) #10 TEK SCREW SIDE LAP FASTENERS PER SPAN.
 - T.O. STL BEAM ELEV = [XX-XXX] -TYP UNO.



FRAMING KEY

	INDICATES DROPPED BEAM -TYP UNO
	INDICATES FLUSH TOP BEAM -TYP UNO
	INDICATES X-BRACED BAY BELOW
	INDICATES W8x28 DRAG STRUT W/ (10) 5/8" O x 3 1/2" H.L.S. -TYP UNO
	INDICATES BEAM END W/ MOMENT CONN.
	INDICATES COL CONT. (SPICES, SEE COL. SCHED.)
	INDICATES COL ABOVE, SEE COL. SCHED.
	INDICATES COL BELOW
	INDICATES DECKING SPAN -TYP

1
1/5/16