

© 2015 RYAN SENATORE ARCHITECTURE

667 CONGRESS STREET  
APARTMENTS  
PORTLAND, MAINE



RYAN SENATORE  
ARCHITECTURE  
667 CONGRESS STREET  
PORTLAND, MAINE 04101  
207-650-6414  
senatorearchitecture.com

CONSULTANTS:  
STRUCTURAL: Structural Integrity  
Civil: Senatore Architecture  
Portland, ME 04101  
207-774-4614

2  
2/17/16

REVISIONS:  
1. 1/5/16  
2. 2/17/16

DATE: 2 NOVEMBER 2015

PROJECT No. 1503

DRAWN BY: MKL

CHECKED BY: AGJ

SCALE: AS NOTED

SHEET TITLE:

ROOF FRAMING PLAN

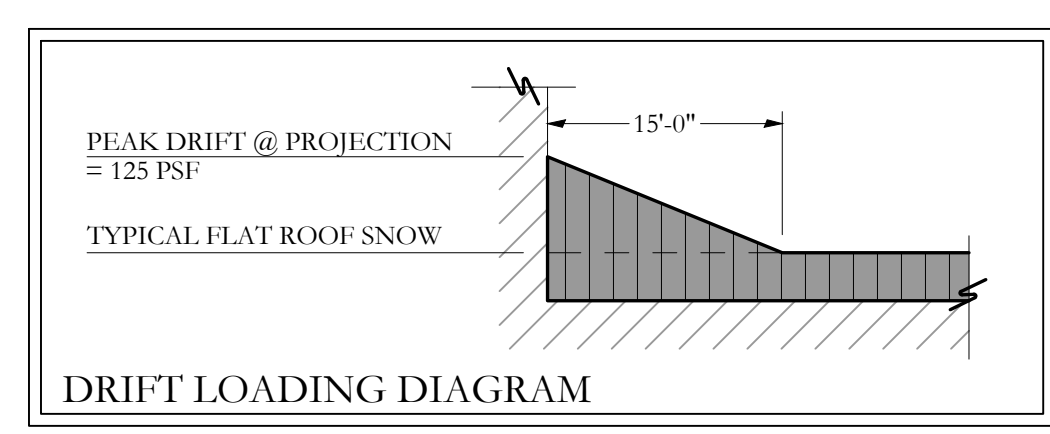
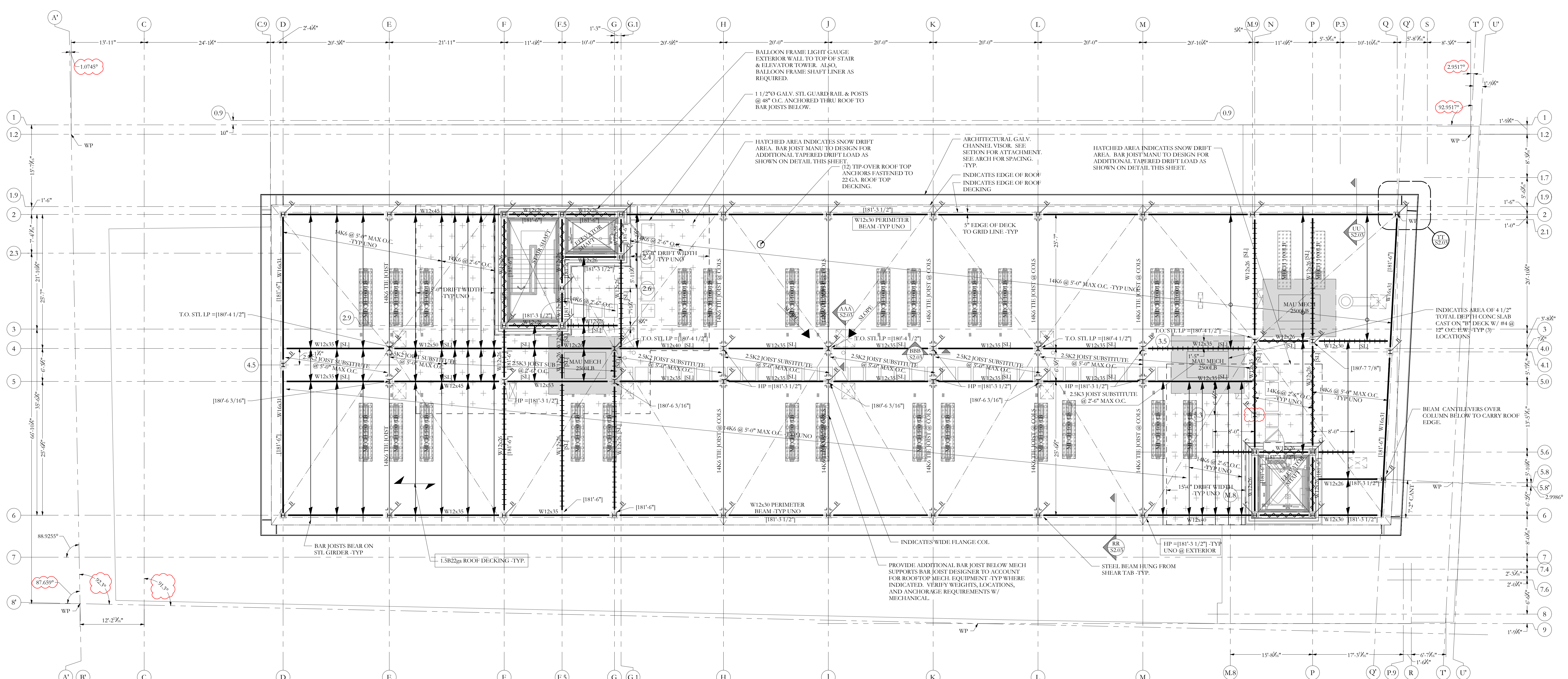
1  
1/5/16

Structural Integrity  
Consulting Engineers, Inc.

77 Oak Street  
Portland, ME, 04101  
p. 207-774-4614  
e. 866-793-7835  
www.structuralintegrity.com

S1.09

ST-15-0038



- ### HIGH ROOF FRAMING PLAN
- SCALE 1/8"=1'-0"
- SEE SHEET S-1.0 FOR GENERAL STRUCTURAL NOTES AND ADDITIONAL INFORMATION.
  - COORDINATE ALL MECHANICAL & CHASES ETC. W/ ARCH AND MECHANICAL DRAWINGS -TYP.
  - VERIFY ROOFTOP MECHANICAL EQUIPMENT WEIGHTS PRIOR TO CONSTRUCTION.
  - VERIFY ROOF PITCH AND DRAINAGE W/ ARCH -TYP.
  - ALL SMALL FRAME BEAMS @ OPENINGS ETC. SHALL BE W8x28 -TYP UNO
  - ALL ROOF DECKING SHALL BE 1 1/2" B 22 STEEL DECK (22GA) W/ 5/8" PUDDLE WELDS @ 12" (36/4 PATTERN) AND (3) #10 TEK SCREW SIDE LAP FASTENERS PER SPAN.
  - T.O. STL BEAM ELEV = [XX-XXX] -TYP UNO.
  - BAR JOIST DESIGNER SHALL ACCOUNT FOR THE FOLLOWING LOADING:
    - DEAD LOAD = 15psf
    - MECHANICAL EQUIPMENT WEIGHTS AS LISTED TO BE VERIFY BY MECHANICAL.
    - SNOW LOAD = 42psf FLAT ROOF + DRIFT AS INDICATED
    - WIND LOADS PER GENERAL NOTES.
  - [SJ] INDICATES SLOPES TOP OF STEEL.

### FRAMING KEY

	INDICATES DROPPED BEAM -TYP UNO
	INDICATES FLUSH TOP BEAM -TYP UNO
	INDICATES BEAM W/ X-BRACED BAY BELOW. DECKING SHALL BE FASTENED TO BEAM SIM TO DRAG STRUT. SEE DEFINITION BELOW.
	INDICATES DRAG STRUT W/ BEAM FLUSH W/ BOT OF DECK OR ISS 3"x1 1/2"x3/16" DRAG STRUT FLAT 11GA TYP IN DECK FLUTES EXTENDING 16" MINIMUM FROM BRACED FROM COLS. FASTEN DECKING TO DRAG STRUTS W/ 5/8" PUDDLE WELDS @ 12" -TYP UNO
	INDICATES BEAM END W/ MOMENT CONN.
	INDICATES CONT. COL. (SPICES, SEE COL. SCHED.)
	INDICATES COL. START ABOVE, SEE COL. SCHED.
	INDICATES COL. BELOW
	INDICATES DECKING SPAN -TYP

Structural Integrity  
Consulting Engineers, Inc.

77 Oak Street  
Portland, ME, 04101  
p. 207-774-4614  
e. 866-793-7835  
www.structuralintegrity.com

S1.09

ST-15-0038