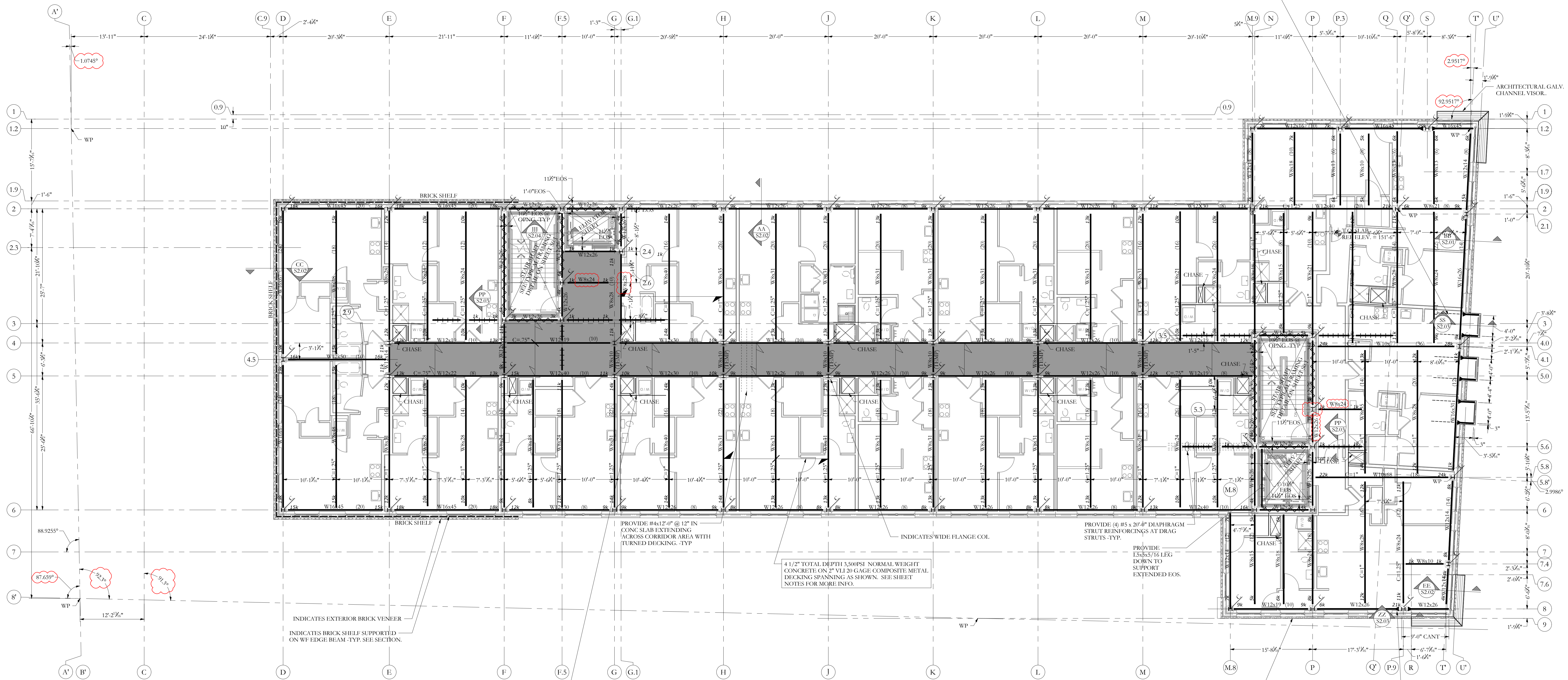
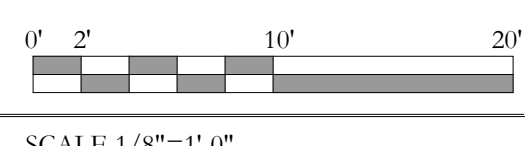


PROVIDE (2) HSS 4x4x1/4" OUTRIGGER
 COPED & FULL PENE WELDED TO EDGE
 BEAM TO SUPPORT BUMPOUT FLR AREA
 AS SHOWN. PROVIDE (2) L1 1/2"x 1
 1/2"x3/16" KICKERS OFF EDGE BEAM WF
 TO SLAB BEYOND. (3) LOCATIONS



6TH FLOOR FRAMING PLAN

- NOTES:
- SEE SHEET S0.00 & S0.01 FOR GENERAL STRUCTURAL NOTES AND ADDITIONAL INFORMATION.
 - COORDINATE ALL THRU SLAB PLUMBING & CHASES ETC. W/ ARCH AND MECHANICAL DRAWINGS -TYP.
 - ALL SMALL FRAME BEAMS @ OPENINGS ETC. SHALL BE W8x24 -TYP UNO
 - PROVIDE 3" MINIMUM CONCRETE WRAP AROUND ALL EXPOSED STL. COLUMNS
 - ALL STEEL FRAMING, CONNECTIONS, BOLTS ETC. AT EXPOSED GARAGE BELOW TO BE HOT DIP GALV. NOTE: CONC WRAPPED COLUMNS EXCLUDED.
 - 4 1/2" TOTAL DEPTH 3,500PSI NORMAL WEIGHT CONCRETE W/ 666 W2.15W2.1 WVF REINFORCING ON 2" VLI 20 GAGE COMPOSITE METAL DECKING SPANNING 10'-0" MAX UNSHORED SPAN. (2 SPAN CONT MIN) UNO
 - ALL FLOOR DECKING SHALL BE 2" VLI 20 STEEL DECK (20GA) W/ 5/8"Ø PUDDLE WELDS @ 12", (36"/4 PATTERN) AND (2) # 10 TIE SCREW SIDE LAP FASTENERS PER SPAN. UNO
 - GALV. G30 MIN COATING TOP AND BOT -TYP.
 - MAX UNSHORED DECKING SPAN:
 - 1 SPAN = 8'-2"
 - 2 SPAN = 10'-3"
 - 3 SPAN = 10'-7"
 - ALL COMPOSITE BEAMS TO HAVE QUANTITY OF 3/4" Ø x 3 1/2" HAS AS NOTED ON PLANS AS "#x#". MINIMUM (1) 3/4" x 3 1/2" HAS @ 24" O.C. ALONG SPAN -TYP.
 - T.O. STL BEAM ELEV = [151'-1 1/2"] -TYP UNO THIS LEVEL.
 - ALL ELEVATIONS LISTED BASED OFF REFERENCE ELEVATION 100'-0" EQUAL TO USGS 118'-0"
 - TEMP INDICATES TEMPORARY BEAMS FOR ERECTION STABILITY.
 - CONCRETE FLOOR DESIGNED AS RESTRAINED ASSEMBLY CONDITION



FRAMING KEY

	INDICATES DROPPED BEAM -TYP UNO
	INDICATES FLUSH TOP BEAM -TYP UNO
	INDICATES X-BRACED BAY BELOW
	INDICATES W8x26 DRAG STRUT W/ (10) 5/8"Ø x 3 1/2" H.L.S. -TYP UNO
	INDICATES BEAM END W/ MOMENT CONN.
	INDICATES COL. CONT. (SPICES, SEE COL. SCHED.)
	INDICATES COL ABOVE, SEE COL. SCHED.
	INDICATES COL BELOW
	INDICATES DECKING SPAN -TYP