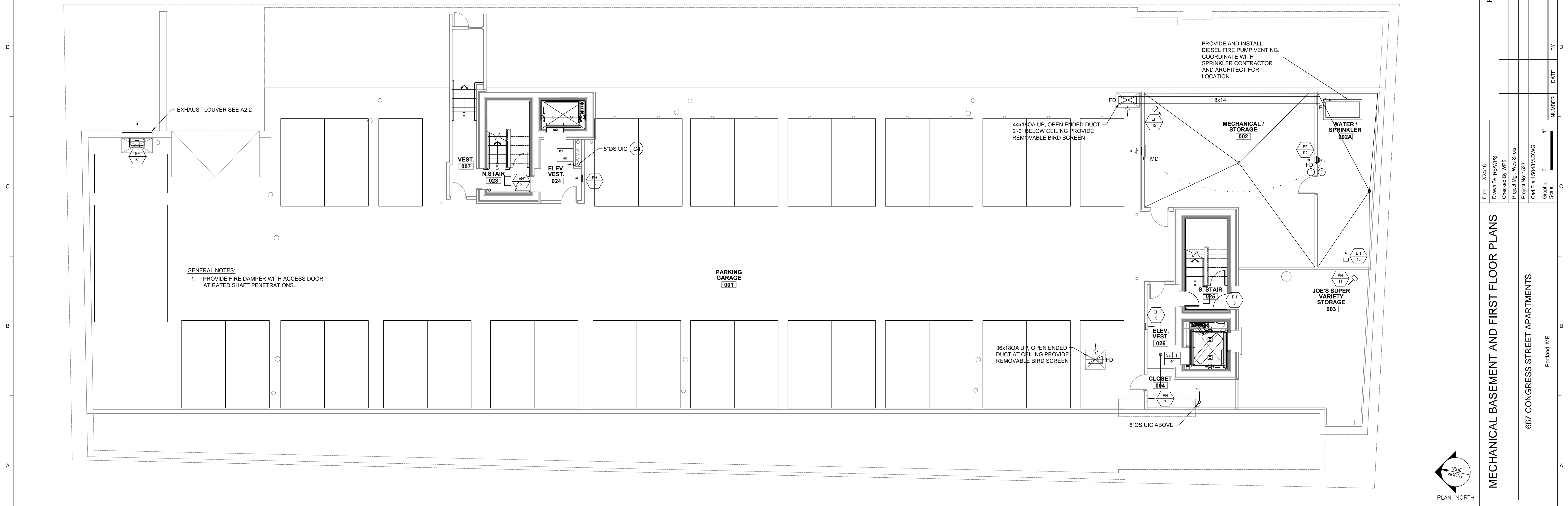


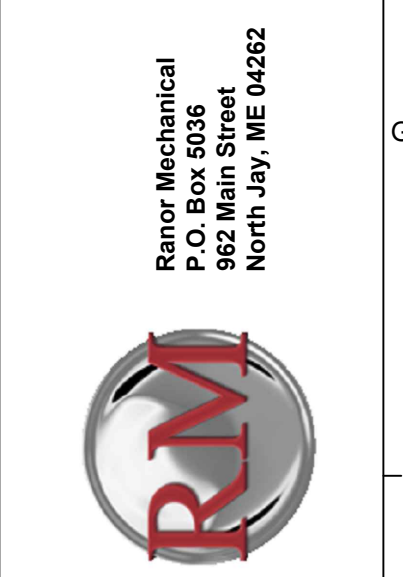
E1 MECHANICAL FIRST FLOOR PLAN

1/8"=1'-0"



A1 MECHANICAL BASEMENT FLOOR PLAN

1/8"=1'-0"



REVISIONS

NUMBER	DATE	BY	DESCRIPTION

MECHANICAL BASEMENT AND FIRST FLOOR PLANS

667 CONGRESS STREET APARTMENTS
Portland, ME

Date: 2/24/16
 Drawn By: RSM/MS
 Checked By: WPS
 Project Mgr: Wes Sims
 Project No: 1523
 Cad File: 150484.DWG
 Graphic Scale: 0 1'

PERMIT SET ~ 24 February 2016 - NOT FOR CONSTRUCTION

M1-0