

© 2015 RYAN SENATORE ARCHITECTURE

667 CONGRESS STREET
APARTMENTS
PORTLAND, MAINE



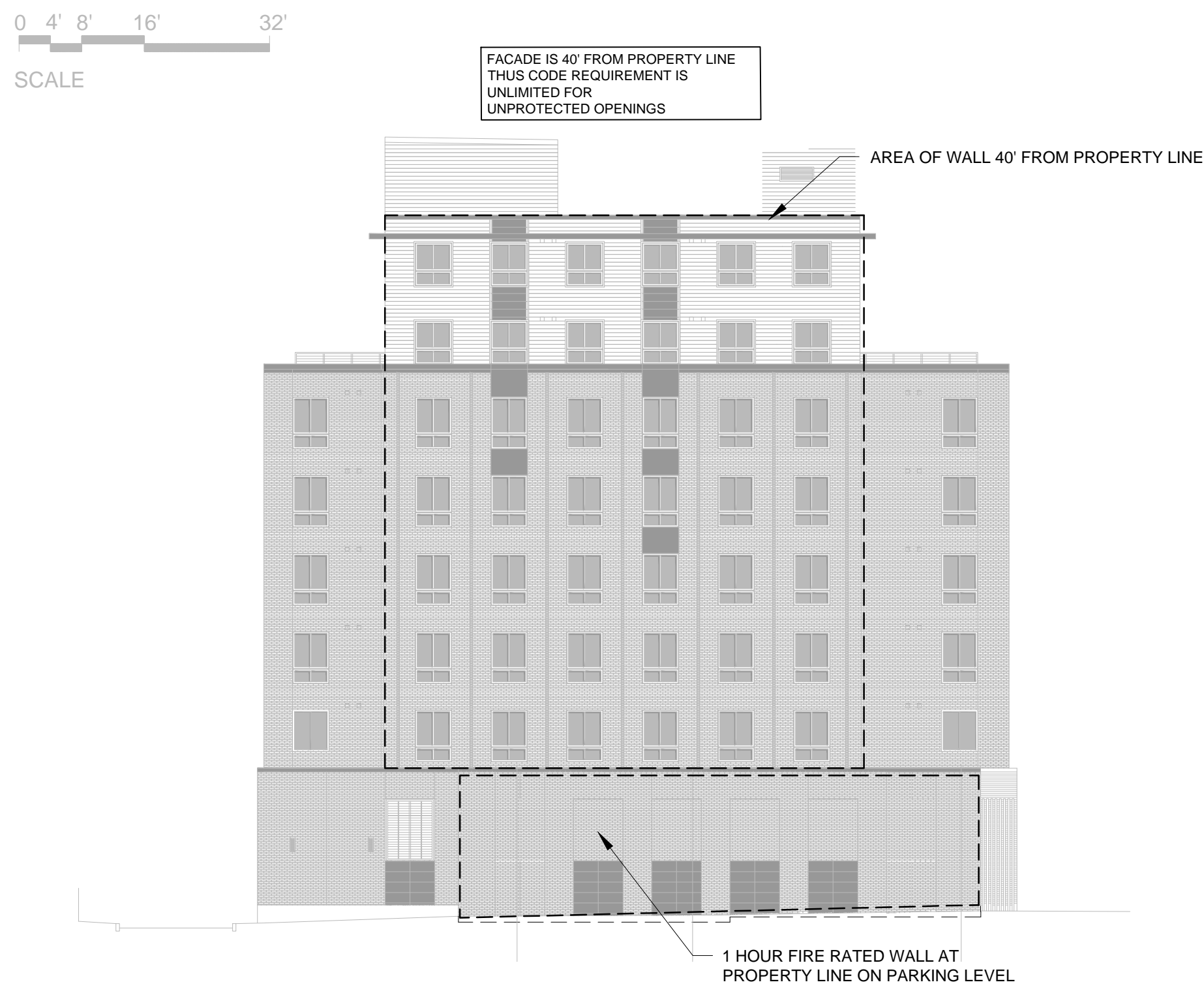
RYAN SENATORE
ARCHITECTURE
667 CONGRESS STREET
PORTLAND, MAINE 04101
207-650-6414
senatorearchitecture.com

CONSULTANTS:
STRUCTURAL
Structural Integrity
77 Oak Street
Portland, ME 04101
207-774-4814

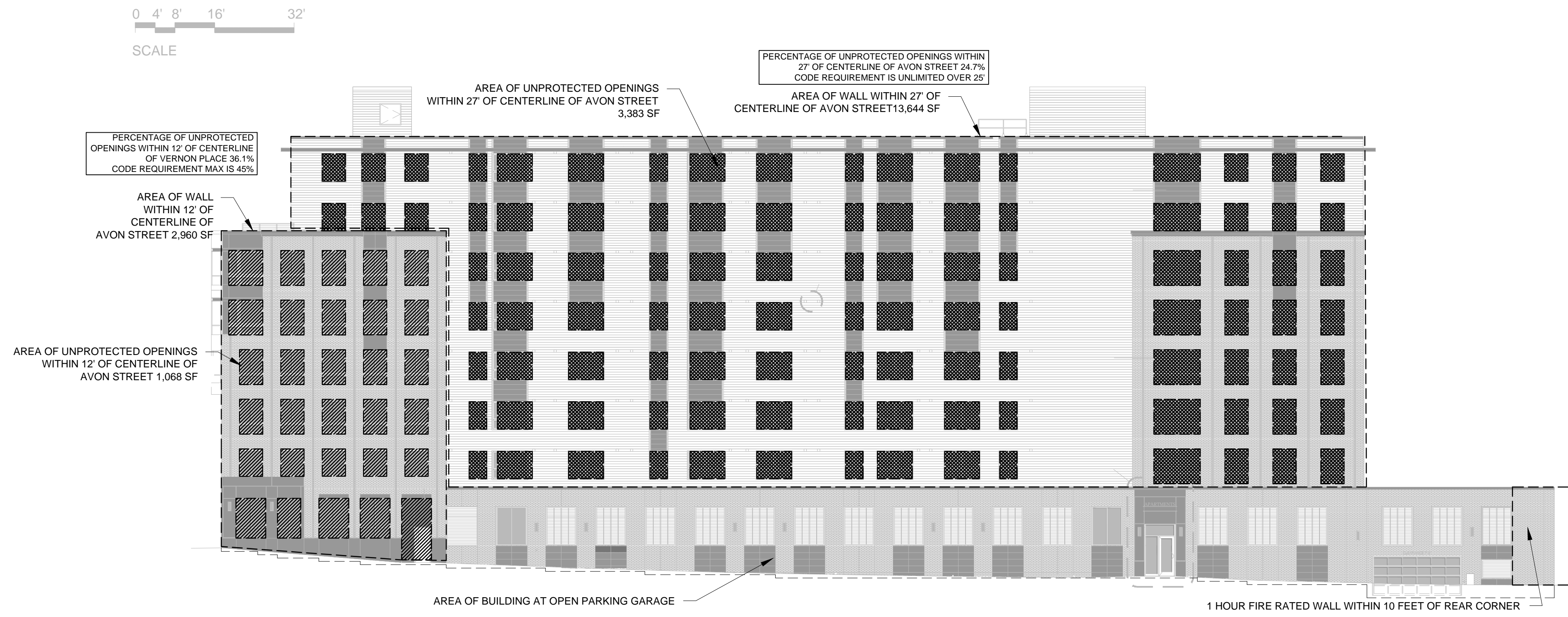
REVISIONS:

DATE: 2 NOVEMBER 2016
PROJECT No. 1503
DRAWN BY: RJS / RRT
CHECKED BY: RJS
SCALE: AS NOTED

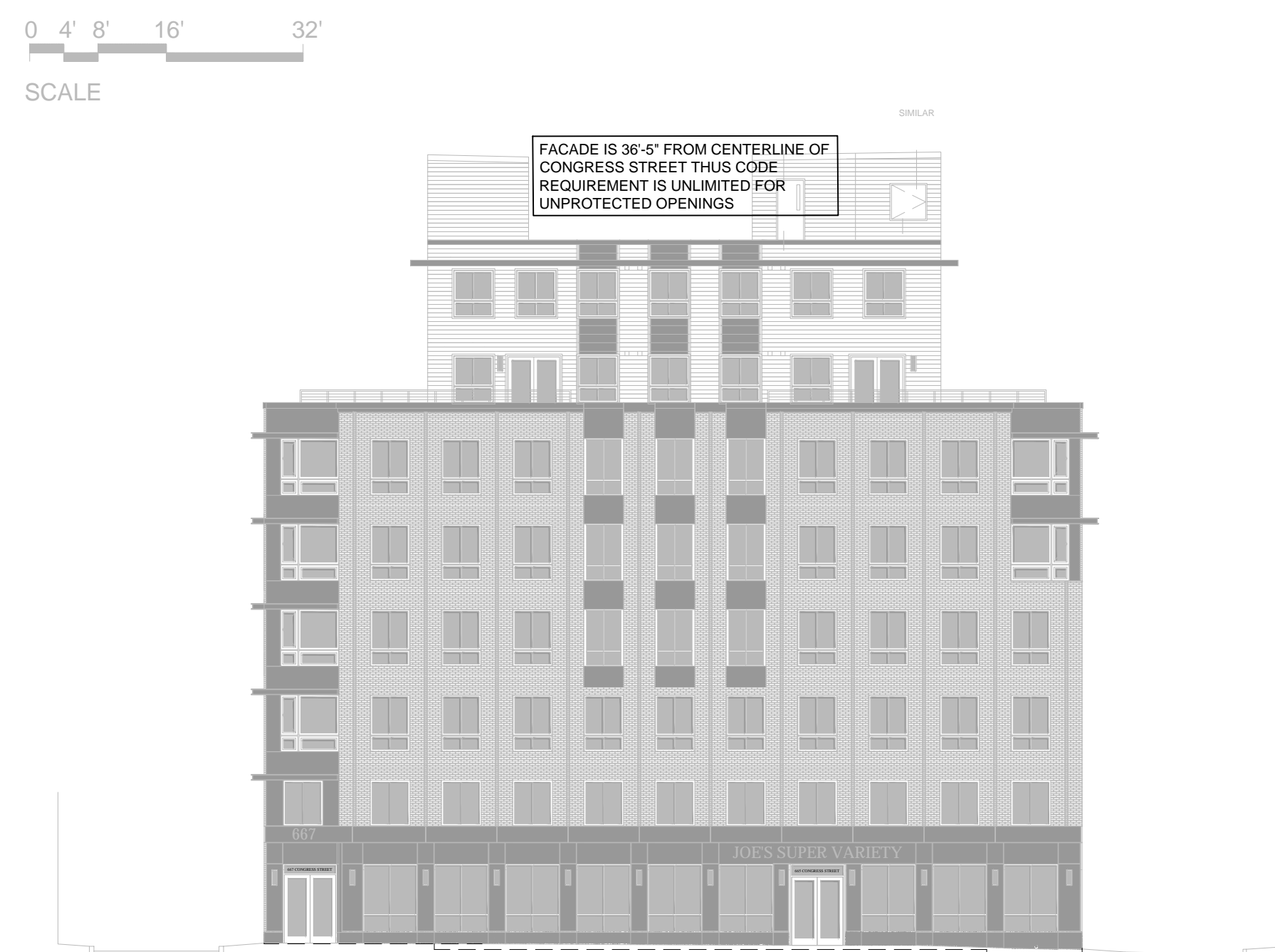
SHEET TITLE:
CODE REVIEW
ELEVATIONS



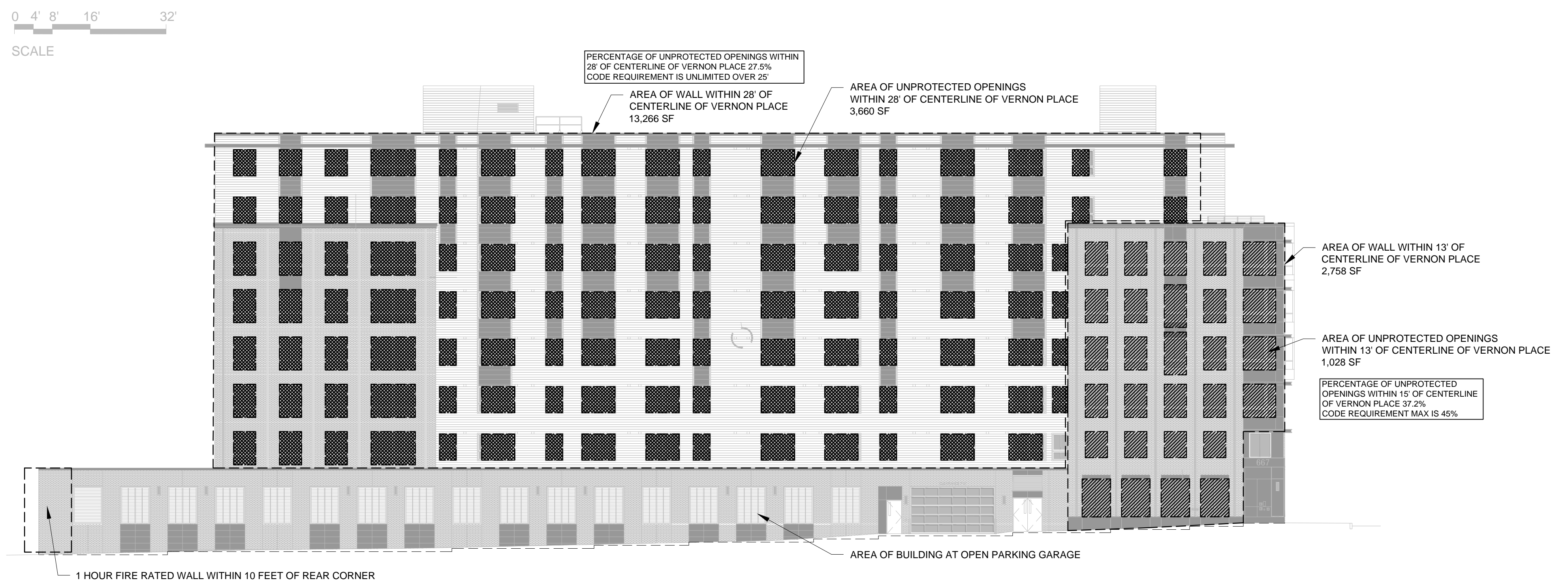
4 CODE REVIEW NORTH ELEVATION
1/16" = 1'-0"



3 CODE REVIEW WEST ELEVATION
1/16" = 1'-0"



2 CODE REVIEW SOUTH ELEVATION
1/16" = 1'-0"



1 CODE REVIEW EAST ELEVATION
1/16" = 1'-0"