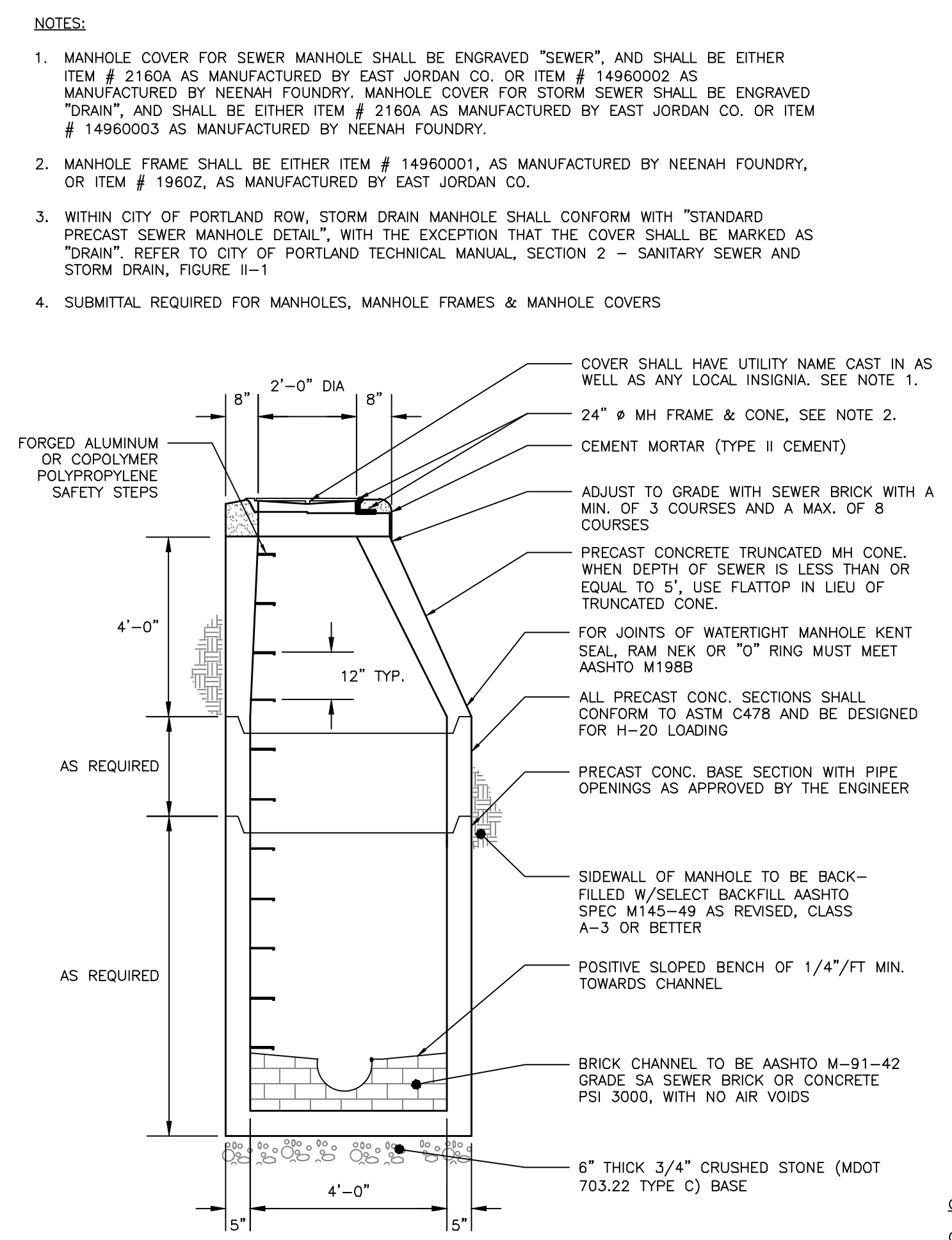
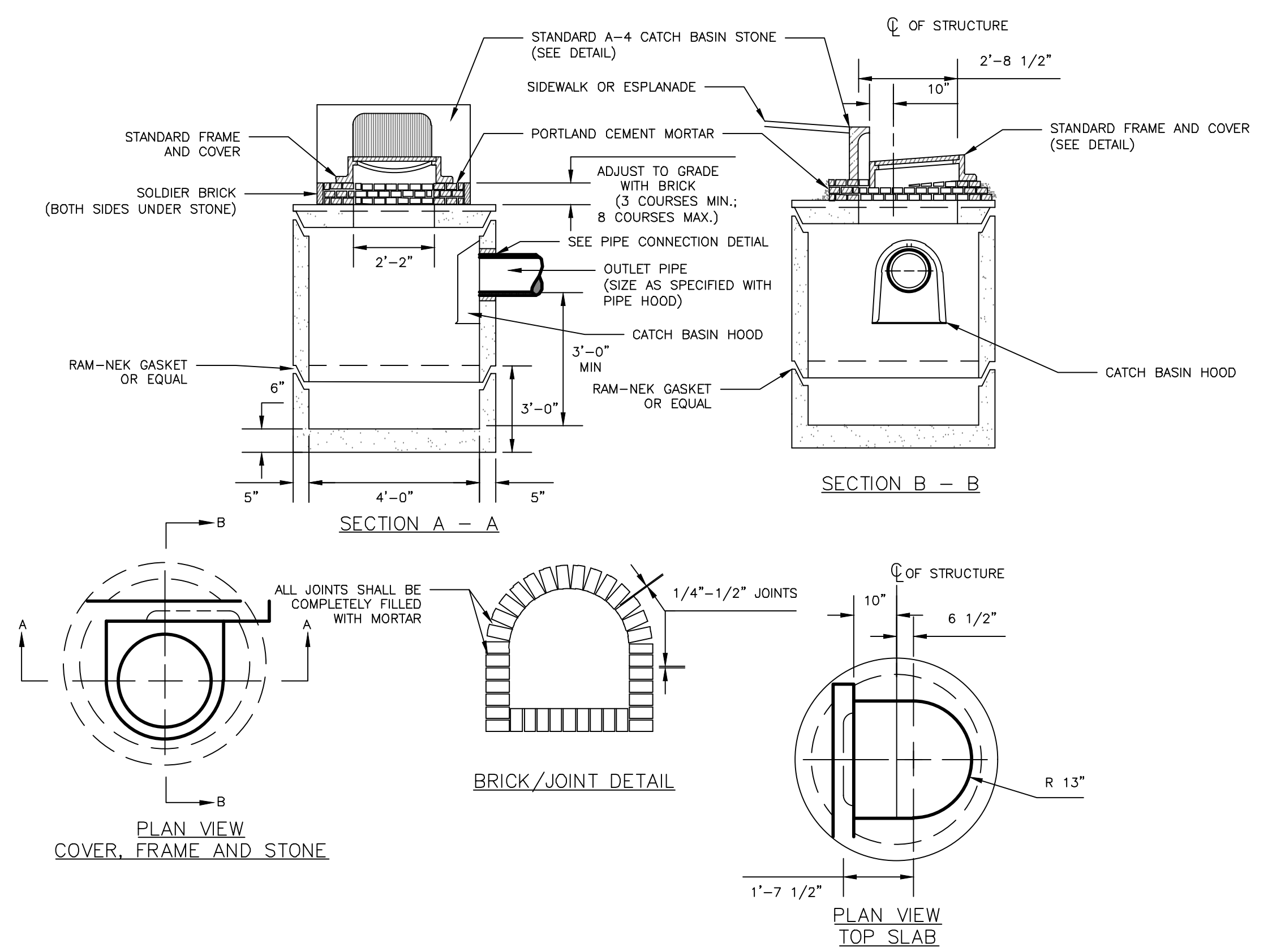


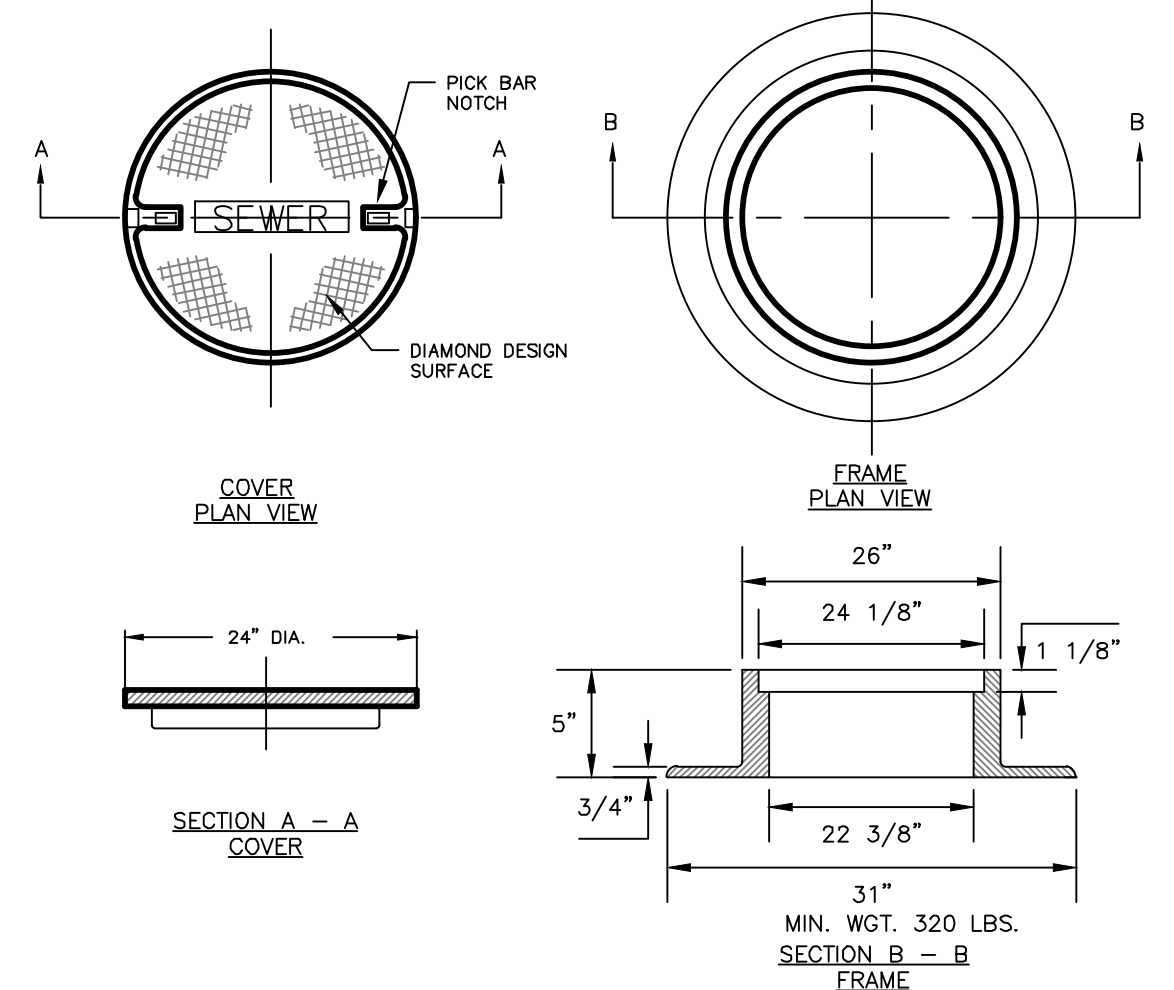
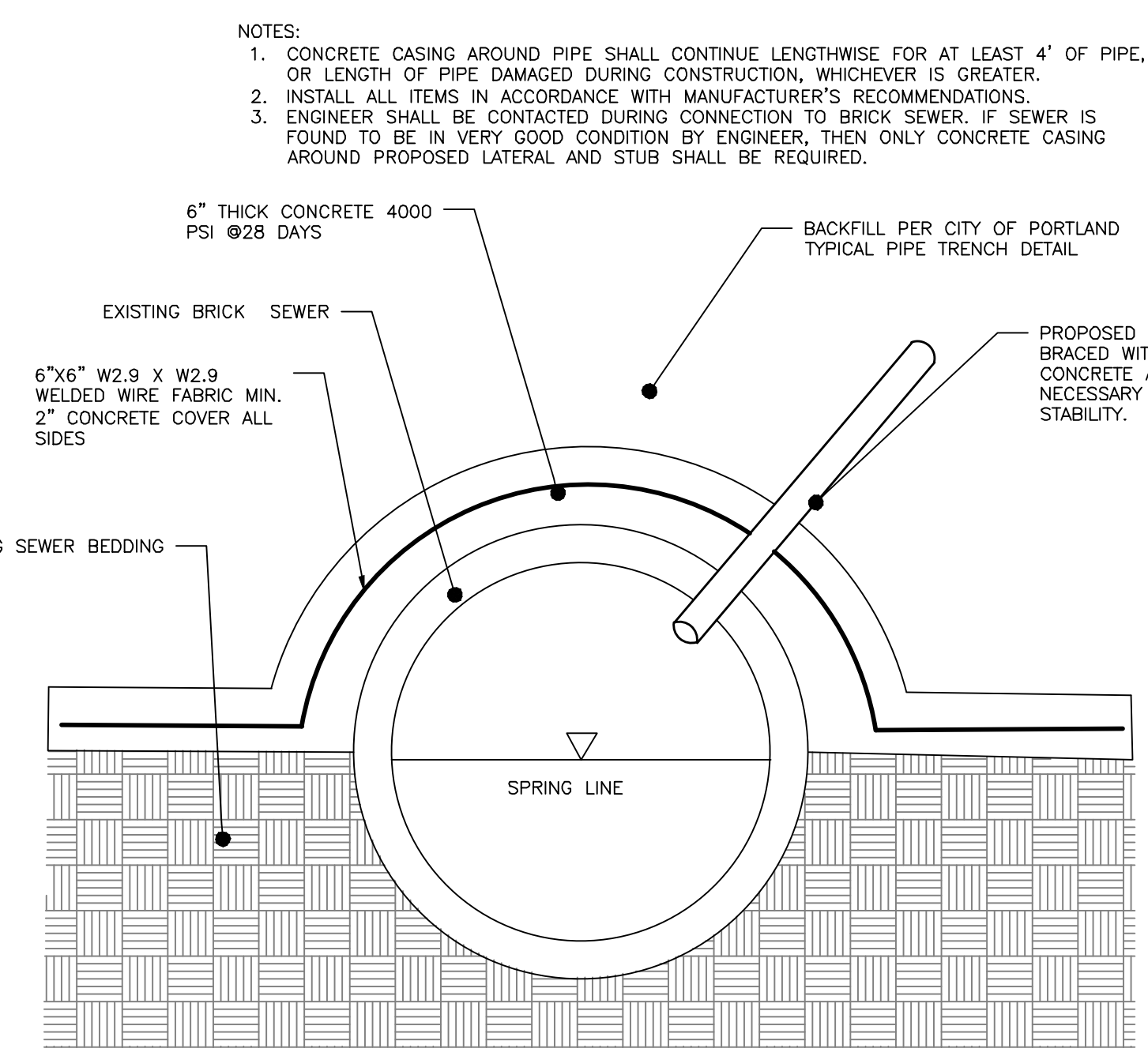
- GENERAL NOTES:**
1. VAULT SHALL BE DESIGNED TO WITHSTAND A H2O WHEEL LOADING WITH 6 INCHES OF OVERBURDEN. THE DESIGN SHALL ALSO COMPLY WITH THE STRENGTH REQUIREMENTS OF NATIONAL ELECTRICAL SAFETY CODE SECTION 323A. PROVIDE SHOW DRAWINGS STAMPED BY A STATE OF MAINE REGISTERED PROFESSIONAL ENGINEER UPON REQUEST.
  2. JOINTS SHALL BE SEALED WITH ASPHALT.
  3. MOUNTING FOR CABLE ROCKS, ETC. CAST IN WALL BY FURTHER PLANS OR FIELD LOCATED.
  4. MANHOLE SHALL BE SET ON A SUITABLE GRAVEL BASE.
  5. CABLES ARE TO BE RACKED ALONG ONE WALL ONLY.
  6. COVER: BRICK AS REQUIRED TO REACH FINISHED GRADE.



**STANDARD PRECAST SEWER MANHOLE**  
NOT TO SCALE

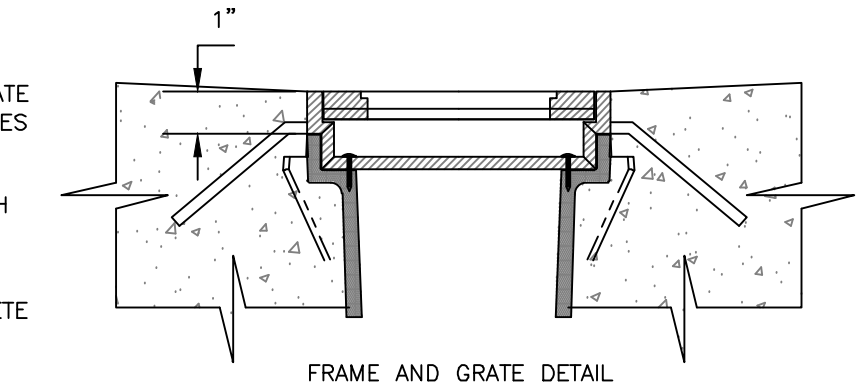
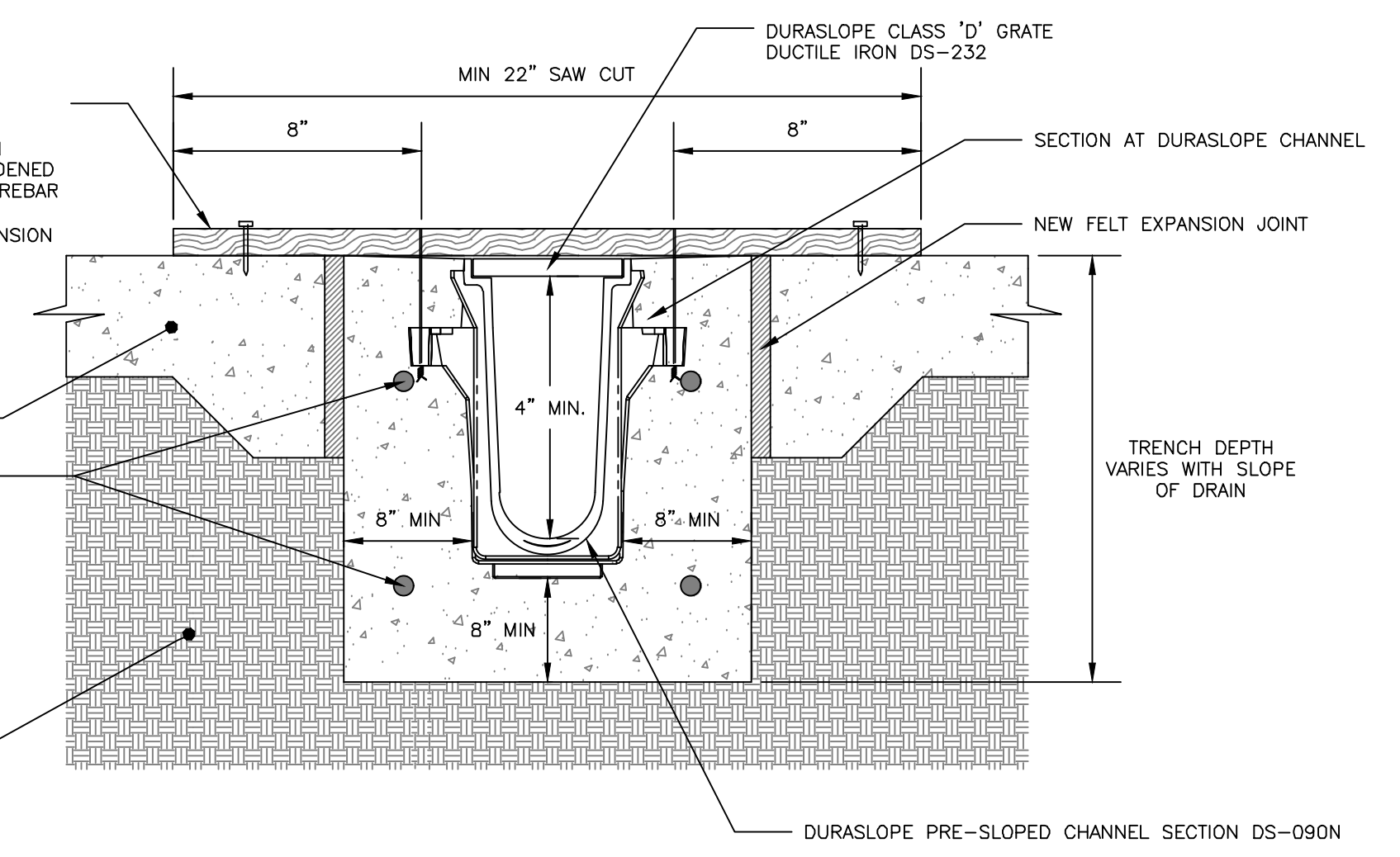


**CITY OF PORTLAND PRECAST CONCRETE CATCH BASIN**  
NOT TO SCALE



**CAST IRON MANHOLE COVER AND FRAME**  
NOT TO SCALE

- CONSTRUCTION METHODS (SEE NOTE 4)**
- OPTION 1: 2X4 WOOD MEMBER SUSPENSION METHOD; ATTACHED TO EX. SLAB WITH HARDENED NAIL; SUSPEND CHANNEL WITH WIRE FROM REBAR CLIPS
- OPTION 2: #3 OR #4 REBAR STAKE SUSPENSION METHOD; LENGTH OF STAKE WILL VARY WITH SLOPE OF DRAIN



**DURASLOPE CLASS D TRENCH DRAIN INSTALLATION**  
NOT TO SCALE

- NOTES:**
1. ALL SANITARY AND STORMWATER/DRAIN MANHOLE COVERS SHALL BE 24" x 5".
  2. ALL SANITARY MANHOLE COVERS AND SHALL HAVE "SEWER" CAST INTO THE COVER.
  3. ALL STORMWATER/DRAIN MANHOLE COVERS SHALL HAVE "DRAIN" CAST INTO THE COVER.
  4. APPROVED MANHOLE FRAMES:
    - 4.1. EAST JORDAN = 1690Z
    - 4.2. OR APPROVED EQUAL
  5. APPROVED MANHOLE COVERS:
    - 5.1. EAST JORDAN = 2160A
    - 5.2. OR APPROVED EQUAL
  6. FRAME AND COVER CONSTRUCTION SHALL BE COMPATIBLE WITH STANDARD PRECAST SEWER MANHOLE DETAIL.

- NOTES:**
1. CHANNELS TO BE INSTALLED WITH A BLANK GRATE; GRATE TO BE PROTECTED FROM CONCRETE POUR (COVER HOLES WITH TAPE)
  2. SET DRAIN IN CHANNEL SURROUNDED BY 8" OF CONCRETE OR THICKNESS OF THE CONCRETE SLAB WITH A MIN. OF 3500 PSI
  3. AVOID FULL LOAD TRAFFIC FOR 28 DAYS OR UNTIL CONCRETE HAS COMPLETELY HARDENED
  4. REFER TO MANUFACTURER'S INSTRUCTIONS FOR COMPLETE INSTALLATION DETAILS

ISSUED FOR CONSTRUCTION

ISSUED FOR	BY
PRELIM. APPLICATION	WHS
PC DD SET	WHS
PC PROGRESS SET	WHS
COMMENT/RESPONSE	WHS
FINAL SUBMISSION	WHS
BIDDING	WHS
COA	WHS
FOR CONSTRUCTION	WHS
CITY COMMENTS	WHS
CITY APPROVED PLAN	WHS
REVISION	REV. DATE

DRAWING NAME: **DRAINAGE DETAILS 2**

PROJECT NAME: **667 CONGRESS STREET REDEVELOPMENT**

CLIENT: **REDFERN LONGFELLOW, LLC.**  
P.O. BOX 8816 PORTLAND, ME 04104

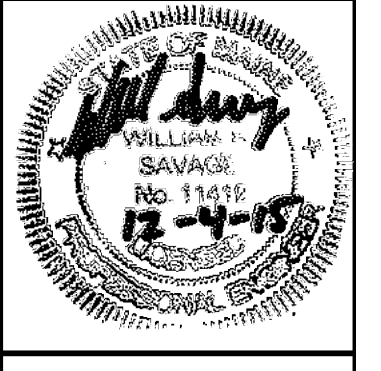
**ACORN ENGINEERING, INC.**

158 DANFORTH (207) 779-2665

MAINE 04102

ACORN ENGINEERING, INC. IS AN EQUAL OPPORTUNITY EMPLOYER. ALL CONTRACTORS AND SUBCONTRACTORS SHALL BE AT THE USER'S SOLE RISK AND WITHOUT LIABILITY TO ACORN ENGINEERING, INC.

FILE:	1060_DETAILS
DATE:	4/20/2015
JN:	1060
SCALE:	NTS
DESIGNED BY:	WHS
DRAWN BY:	MAG
CHECKED BY:	WHS



DRAWING NO. **C-44**