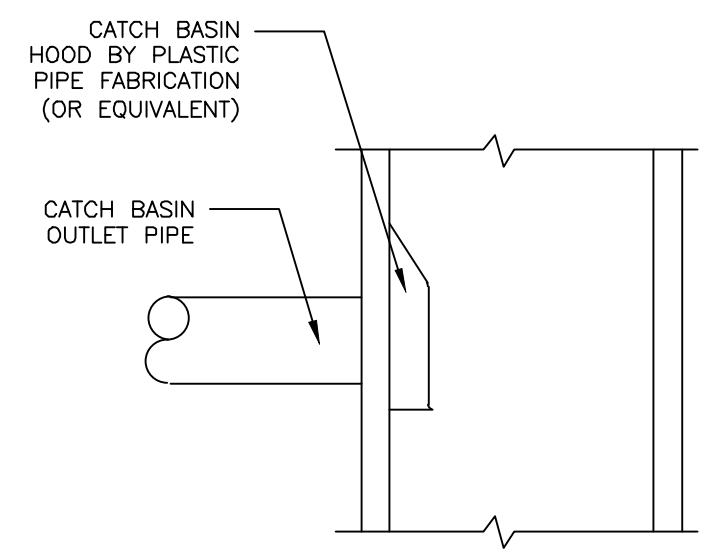
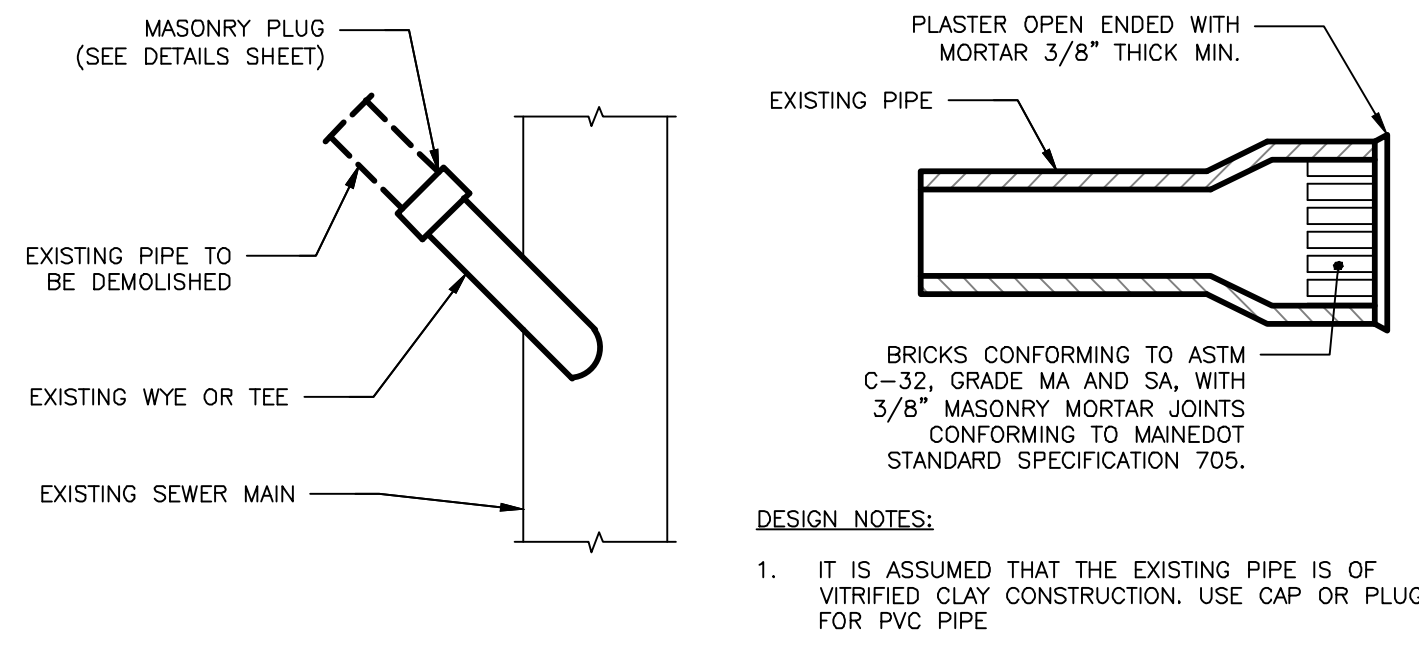


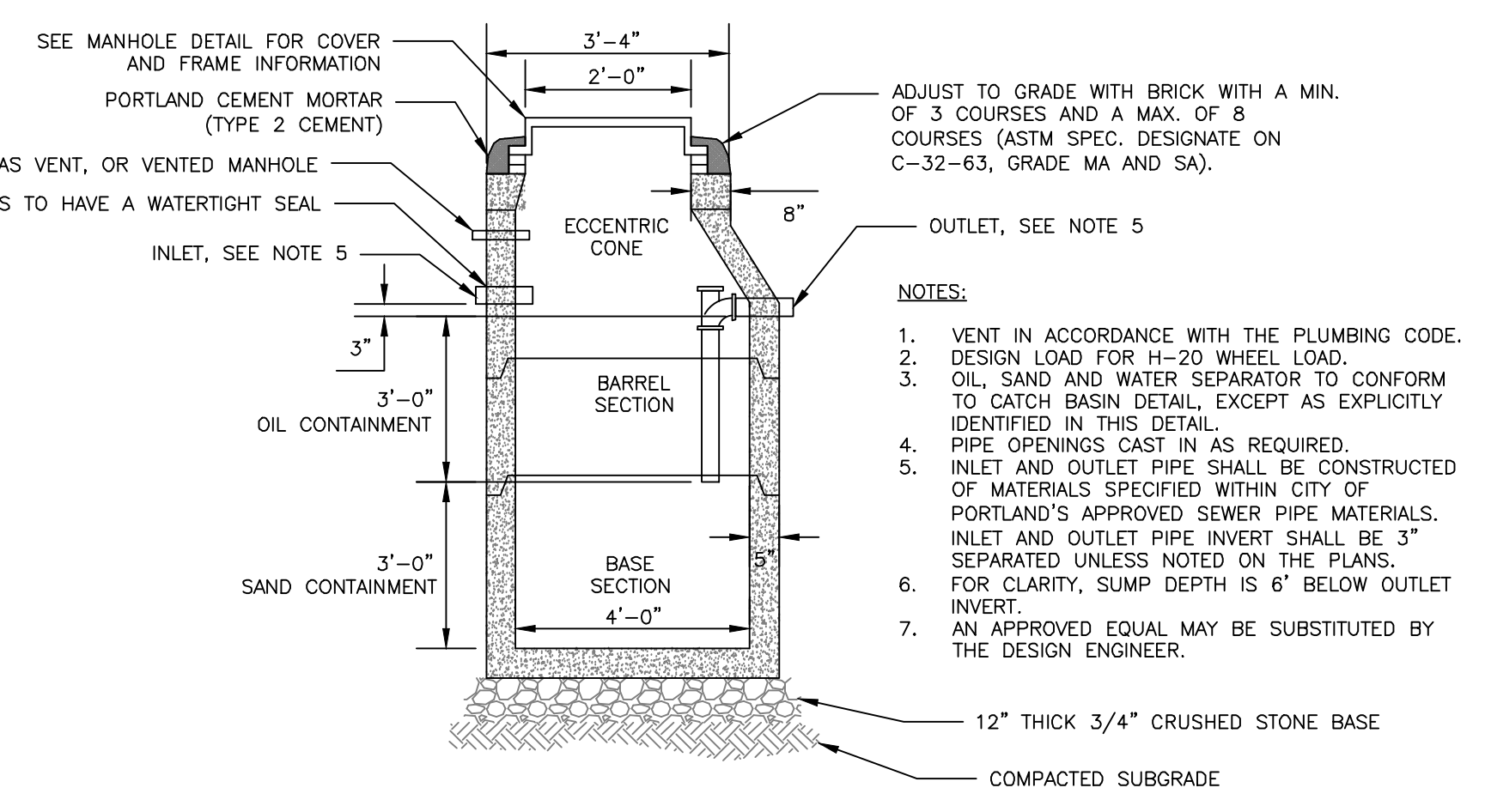
CLEANOUT DETAIL
NOT TO SCALE



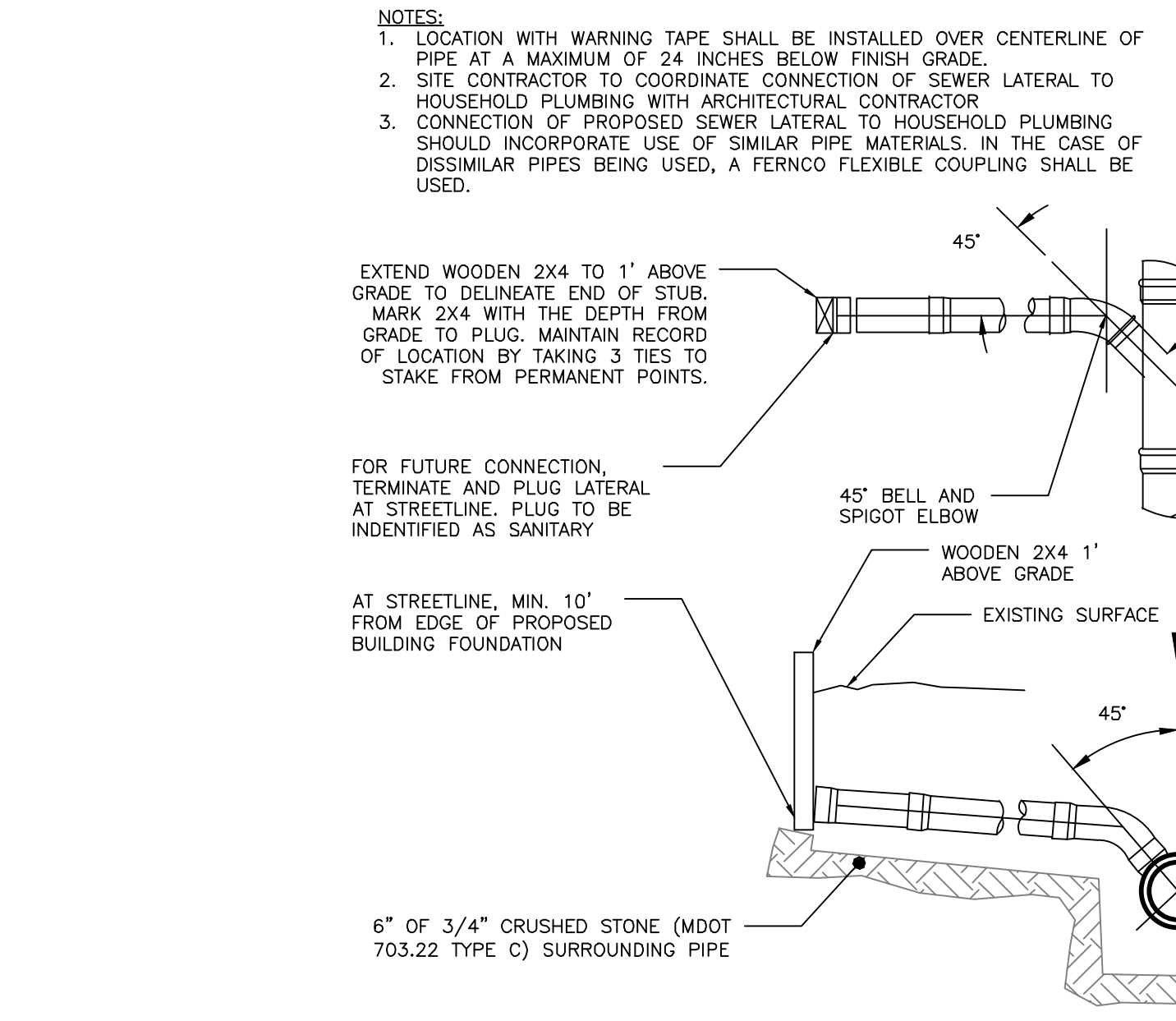
CATCH BASIN HOOD DETAIL
NOT TO SCALE



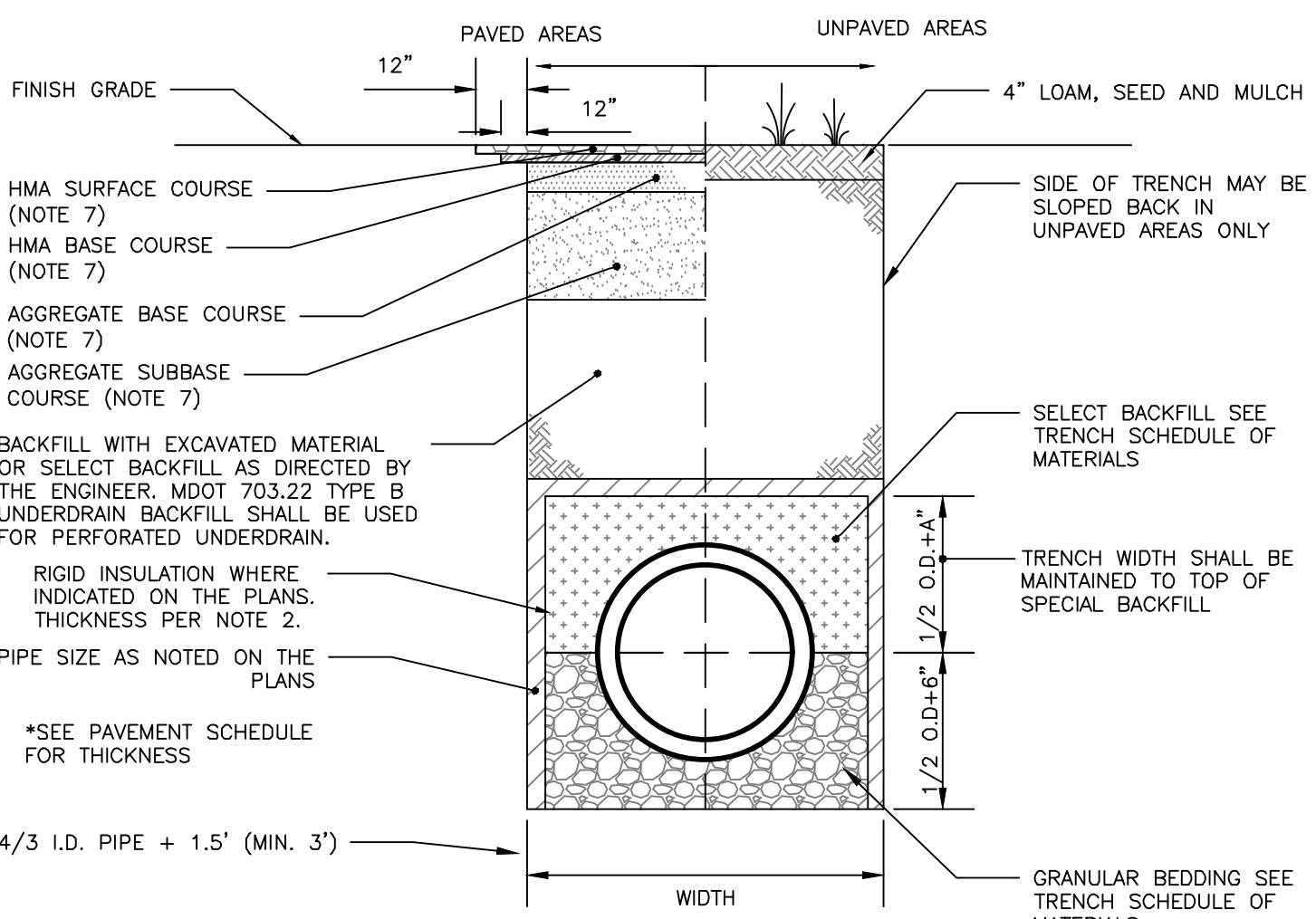
MASONRY PLUG DETAIL
NOT TO SCALE



4'-0" DIAMETER PRECAST OIL AND WATER SEPARATOR
NOT TO SCALE



SEWER TEE/WYE CONNECTION DETAIL
NOT TO SCALE

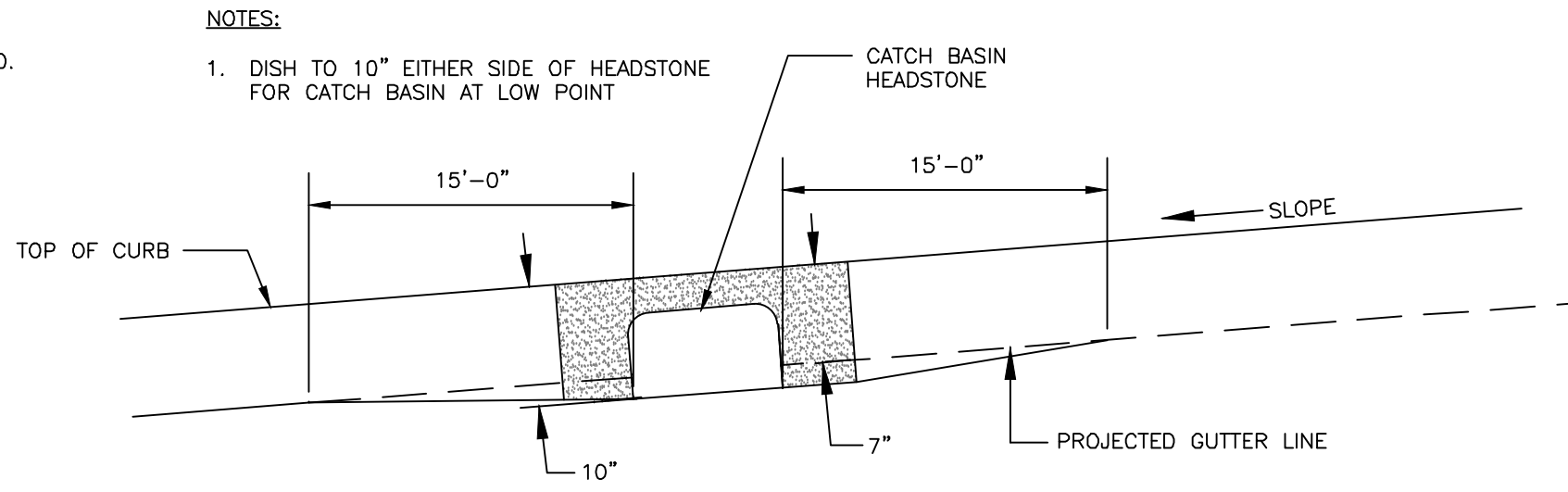


STORM DRAIN AND SEWER TYPICAL TRENCH SECTION
NOT TO SCALE

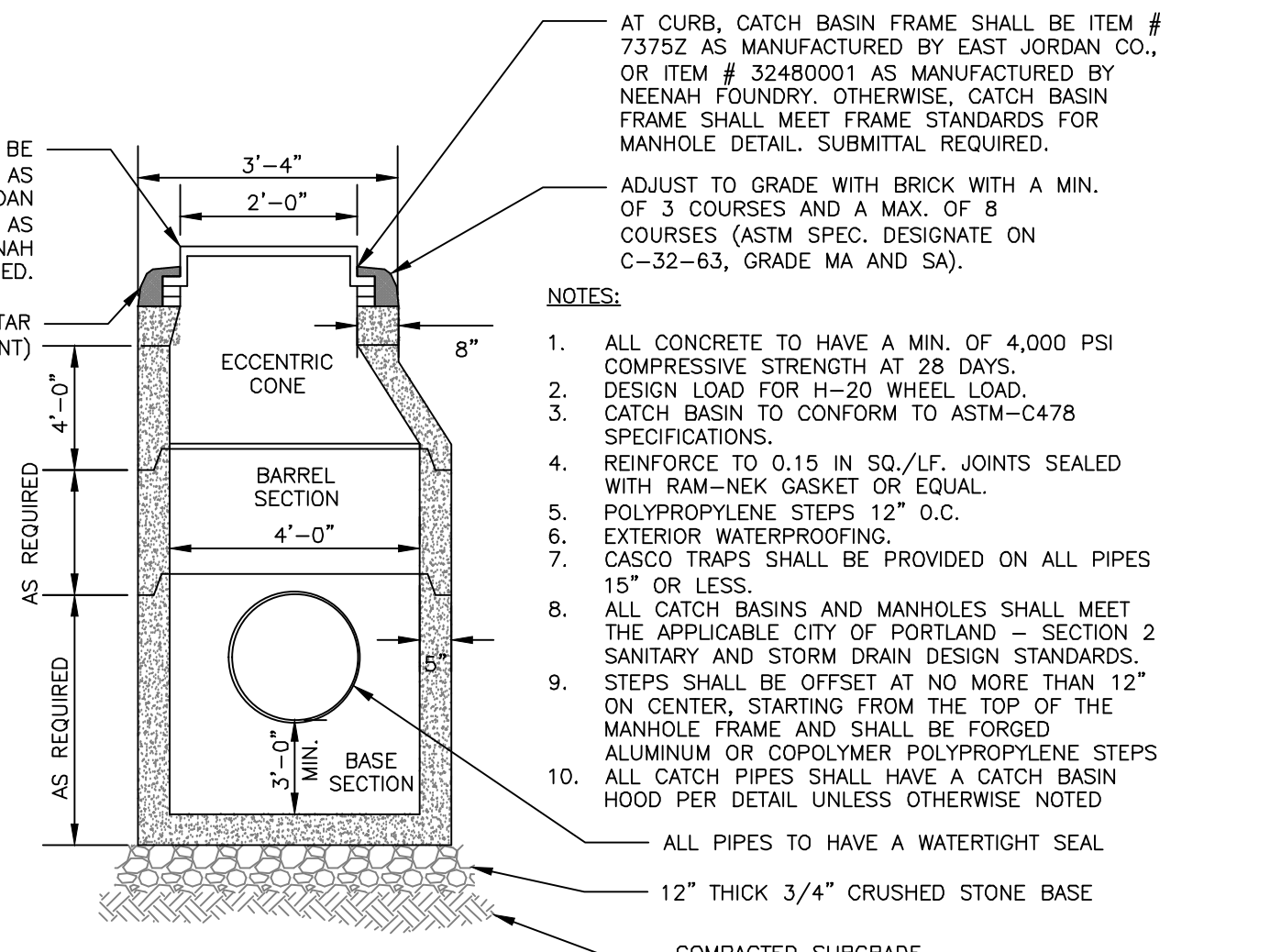
SCHEDULE OF MATERIALS		
TYPE OF PIPE	GRANULAR BEDDING	SELECT BACKFILL
CMP DUCTILE IRON RCP	MDOT 703.22 TYPE B UD BACKFILL	MDOT 703.22 TYPE B UD BACKFILL
PVC/HDPE	MDOT 703.22 TYPE C 3/4\"/>	

- NOTES:**
- BRACING AND SHEETING OR OTHER TRENCH PROTECTION TO BE PROVIDED TO MEET APPLICABLE STATE AND O.S.H.A. SAFETY STANDARDS. ALL SUCH TRENCH PROTECTION TO BE THE RESPONSIBILITY OF THE CONTRACTOR.
 - STORM DRAIN COVER BETWEEN 2' AND 3' SHALL INCLUDE 4" OF RIGID INSULATION. COVER BETWEEN 3' AND 4' SHALL INCLUDE 2" RIGID INSULATION. OTHER UTILITIES: ADD 2" OF RIGID INSULATION FOR EACH FOOT ABOVE MINIMUM DEPTH.
 - INSTALL WARNING TAPE DIRECTLY ABOVE UTILITIES AT THE TOP OF SUBGRADE.
 - MINIMUM COVER
 - 2'-0" - STORM DRAIN
 - 5'-0" - SEWER
 - NO TREES SHALL BE PLANTED WITHIN 5' OF A SEWER PIPE OR SERVICE
 - THIS DETAIL SHALL BE APPLIED ONLY TO DRAINAGE PIPE TRENCHES OUTSIDE OF THE CITY OF PORTLAND ROW. THICKNESS AS NOTED BY SURFACE DETAILS

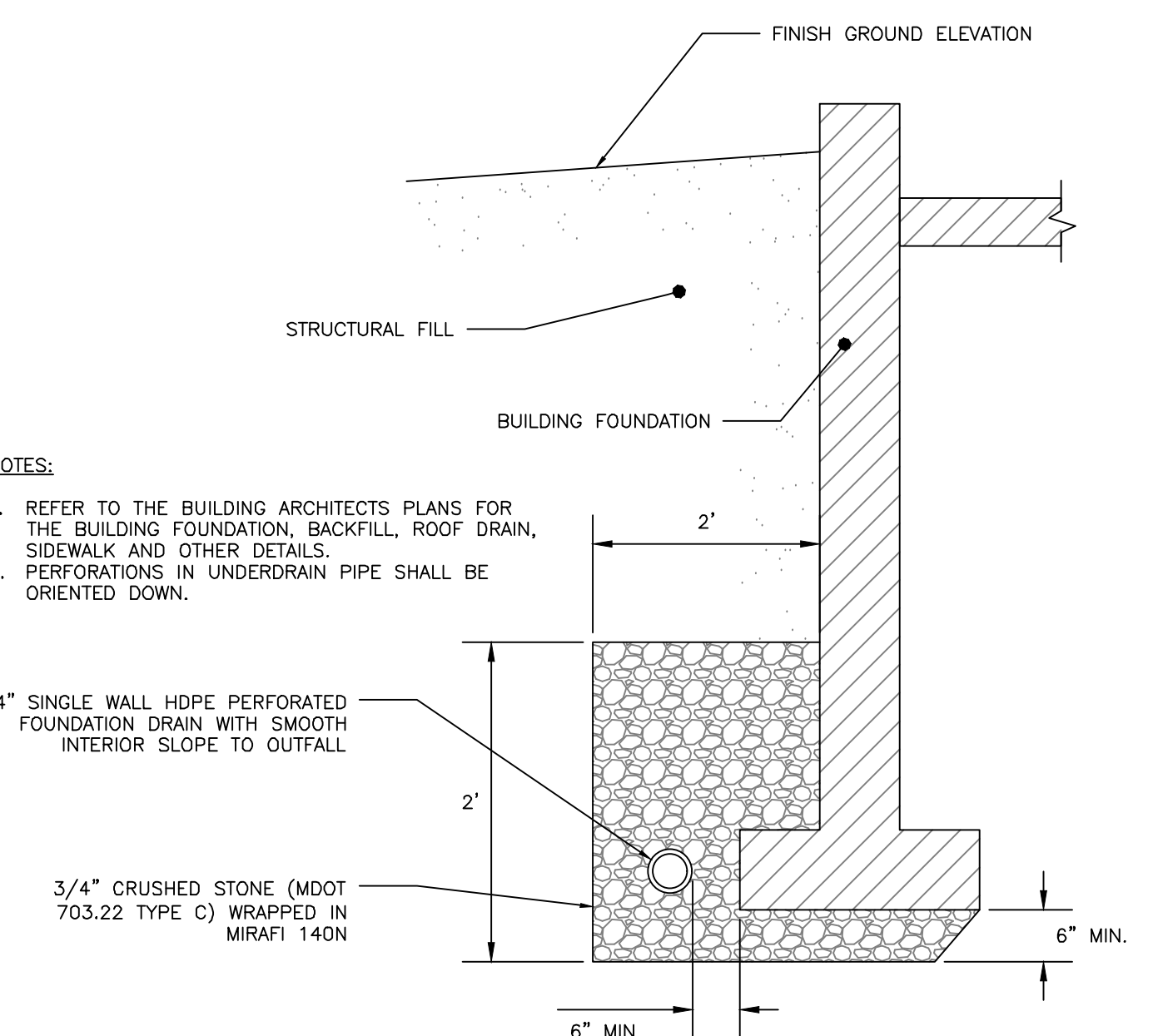
- ALLOWABLE PIPE MATERIALS:**
- REINFORCED CONCRETE PIPE (RCP) MIN. STRENGTH OF CLASS III
 - PVC RING TYPE SEWER (SDR 35) OR EQUIVALENT, MIN PS-46 RATING
 - PVC RING TYPE SEWER PIPE MEETING ASTM F 789
 - DUCTILE IRON PIPE (DIP)
 - ADS N-12 HP TRIPLE-WALL MIN PS-46 RATING
 - ADS SANITITE HP MIN. PS-46



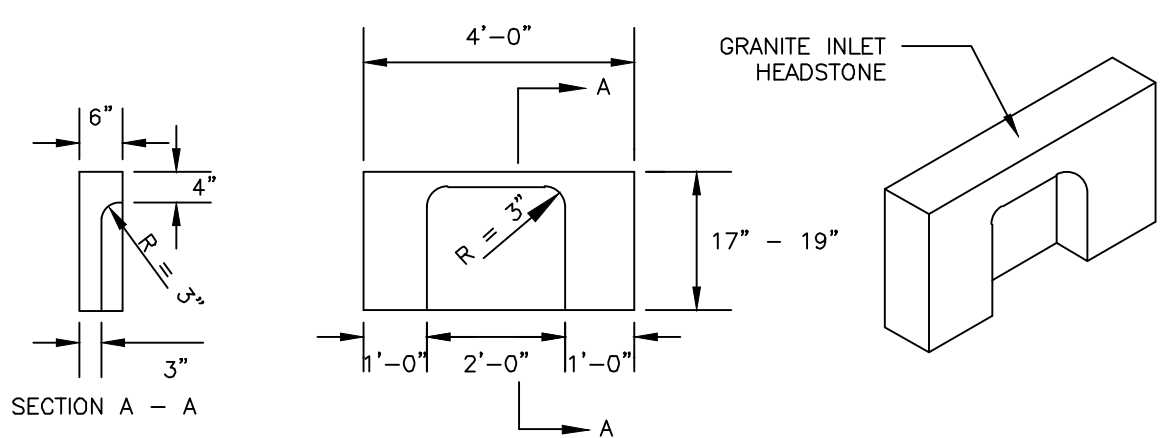
PAVEMENT GRADING ON SLOPES FOR CATCH BASIN AND INLET
NOT TO SCALE



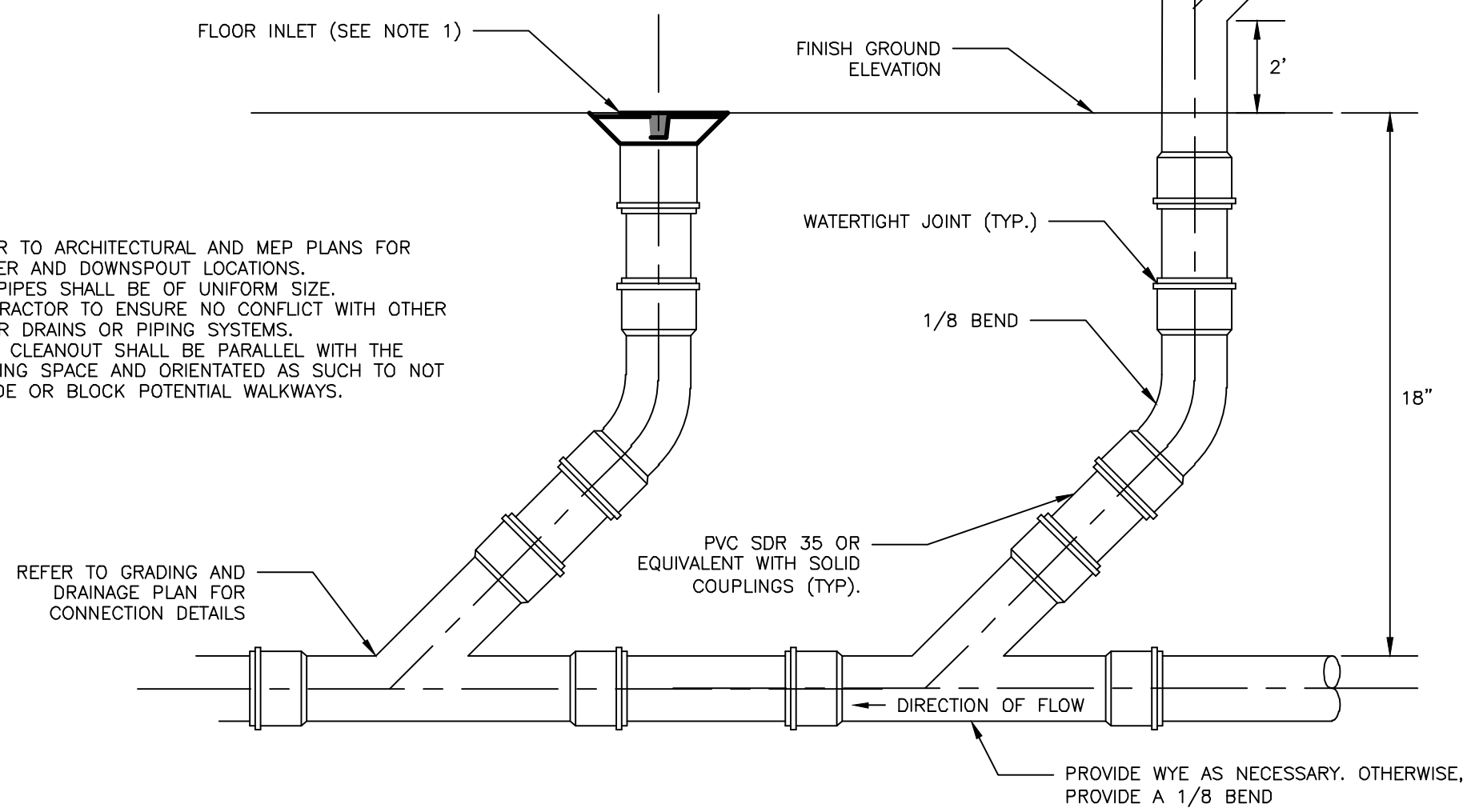
4'-0" DIAMETER PRECAST CATCH BASIN
NOT TO SCALE



FOUNDATION DRAIN DETAIL
NOT TO SCALE



4' GRANITE HEADSTONE FOR CATCH BASIN INLET
NOT TO SCALE



FLOOR DOWNSPOUT WITH CLEANOUT AND FLOOR DRAIN CONNECTION DETAIL
NOT TO SCALE

ISSUED FOR	BY	DATE
PRELIM. APPLICATION	WHS	7/30/18
PC DD SET	WHS	8/7/18
PC PROGRESS SET	WHS	8/21/18
COMMENT/RESPONSE	WHS	9/15/18
FINAL SUBMISSION	WHS	10/13/18
BIDDING	WHS	10/19/18
COA	WHS	10/26/18
FOR CONSTRUCTION	WHS	11/27/18
CITY COMMENTS	WHS	12/14/18
CITY APPROVED PLAN	WHS	12/18/18
REVISION	DATE	

DRAWING NAME: **DRAINAGE DETAILS 1**
PROJECT NAME: **667 CONGRESS STREET REDEVELOPMENT**
CLIENT: **REDFERN LONGFELLOW, LLC.**
P.O. BOX 8818 PORTLAND, ME 04104

ACORN ENGINEERING, INC.
158 DANFORTH (207) 779-2665
MAINE 04102

ACORN ENGINEERING, INC.
158 DANFORTH (207) 779-2665
MAINE 04102

FILE:	1060_DETAILS
DATE:	4/20/2018
JN:	1060
SCALE:	NTS
DESIGNED BY:	WHS
DRAWN BY:	MAG
CHECKED BY:	WHS



DRAWING NO. **C-43**

ISSUED FOR CONSTRUCTION