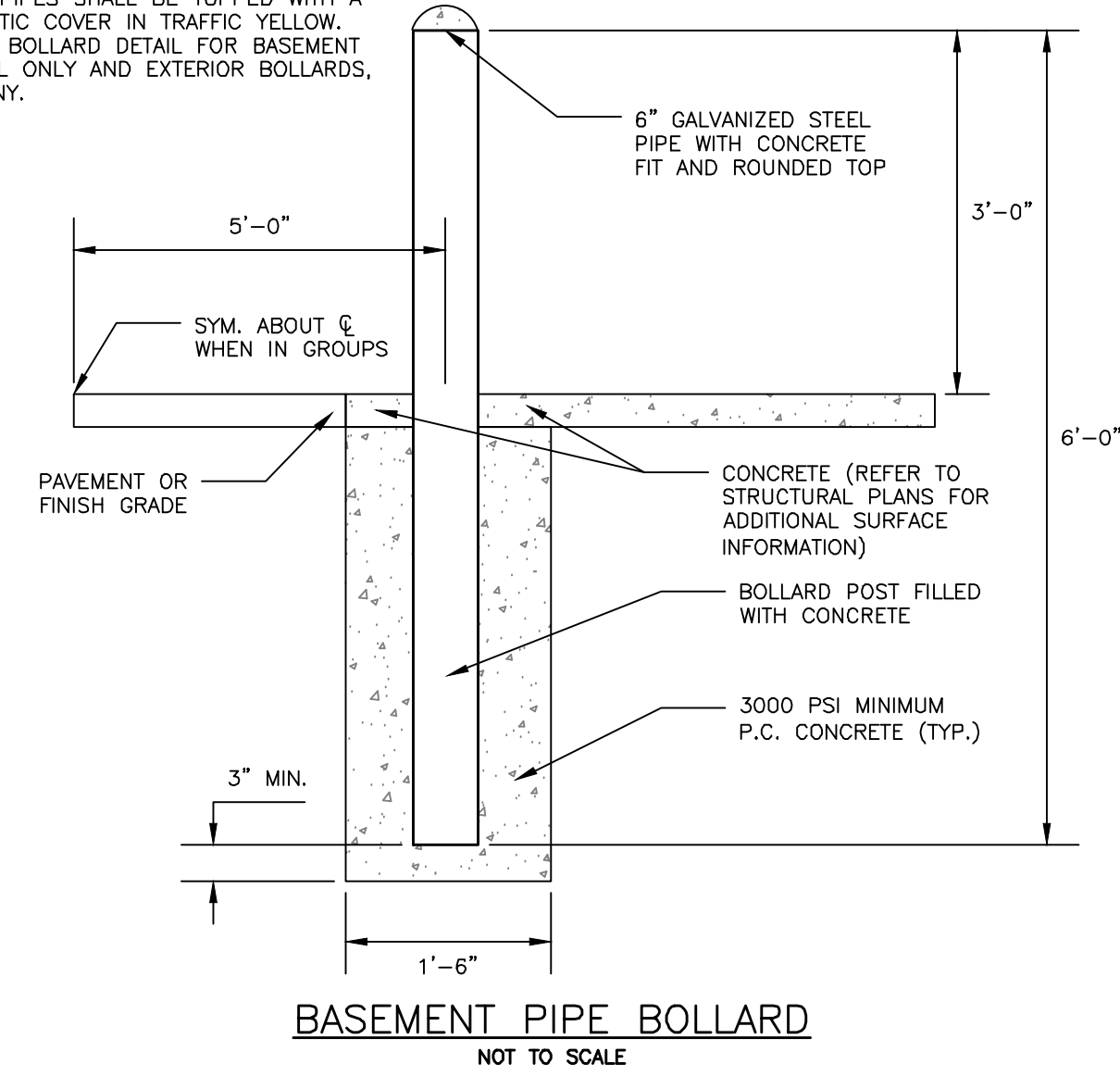


NOTES:

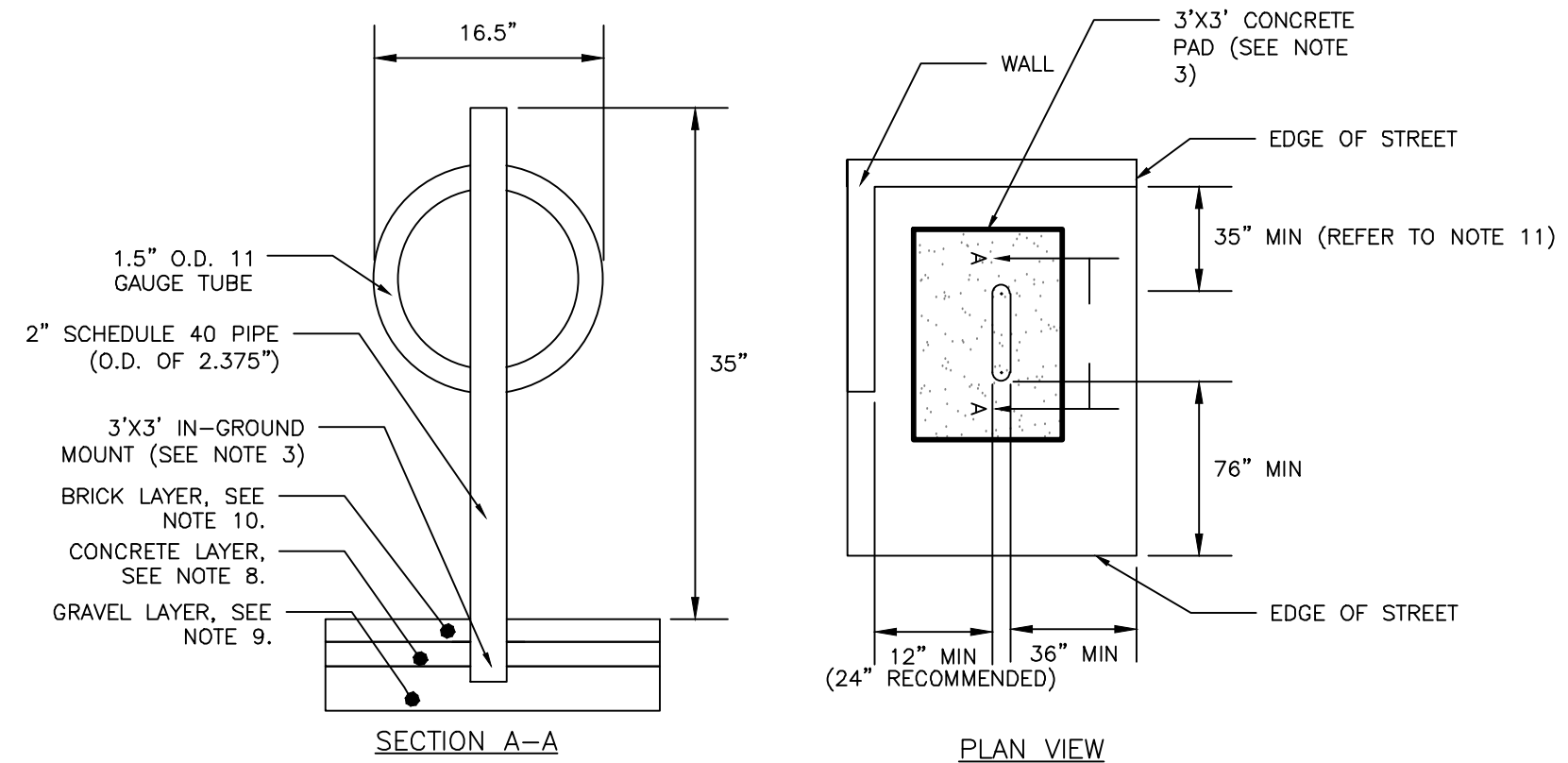
1. ALL PIPES SHALL BE TOPPED WITH A PLASTIC COVER IN TRAFFIC YELLOW. PIPE BOLLARD DETAIL FOR BASEMENT LEVEL ONLY AND EXTERIOR BOLLARDS, IF ANY.



BASEMENT PIPE BOLLARD
NOT TO SCALE

NOTES:

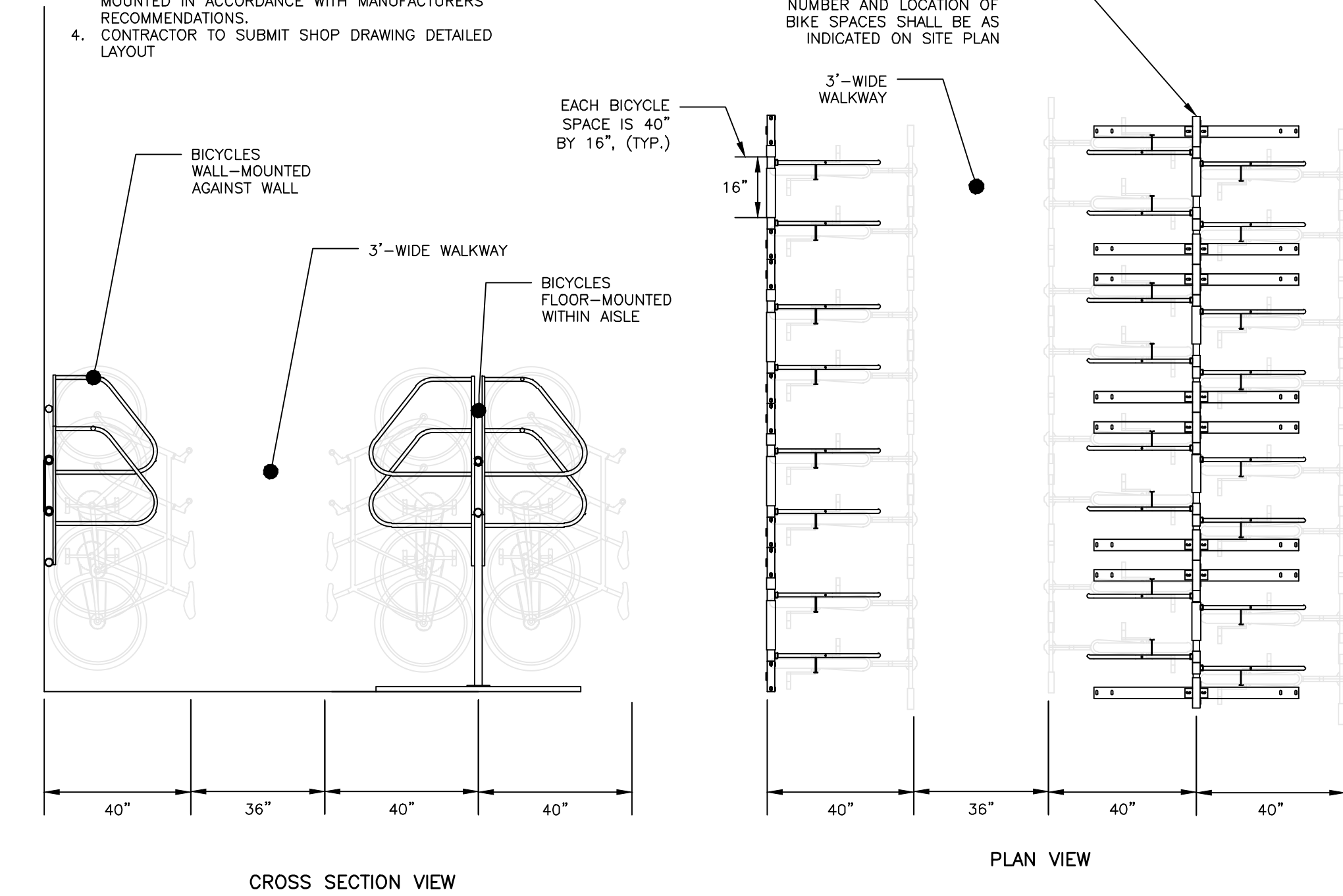
1. BICYCLE RACK SHALL HAVE CAPACITY FOR TWO BICYCLES.
2. BICYCLE RACK PARTS SHALL BE OF UNIFORM COLOR AND SHALL BE FINISHED IN ACCORDANCE WITH PRODUCT SPECIFICATION.
3. BICYCLE RACK SHALL BE INSTALLED IN ACCORDANCE WITH MANUFACTURER'S MOST RECENT INSTALLATION RECOMMENDATIONS, AND SHALL BE INSTALLED WITH AN IN-GROUND MOUNT UNLESS OTHERWISE APPROVED BY ENGINEER.
4. BICYCLE RACK SHALL BE "DERO BIKE HITCH", AS MANUFACTURED BY DERO BIKE RACKS.
5. MINIMUM OFFSETS SHOWN. MANUFACTURER'S RECOMMENDED OFFSETS SHALL BE ENFORCED WHERE POSSIBLE.
6. MINIMUM DISTANCE BETWEEN BICYCLE RACKS SHALL BE 24". RECOMMENDED DISTANCE BETWEEN BICYCLE RACKS SHALL BE 38".
7. ALL OFFSETS ARE FROM OUTSIDE EDGES OF ITEMS.
8. CONCRETE SHALL BE 4000 PSI @28 DAYS. BOTTOM OF CONCRETE SHALL BE AT TOP OF SIDEWALK GRAVEL ELEVATION. DEPTH VARIES APPROX. 4"-7".
9. GRAVEL LAYER SHALL BE INSTALLED IN ACCORDANCE WITH BRICK SIDEWALK WITH BITUMINOUS BASE DETAIL, AND SHALL BE MAINDOT 703.06 TYPE B.
10. TOP OF BRICK LAYER SHALL BE AT SAME ELEVATION IN ACCORDANCE WITH BRICK SIDEWALK DETAIL.
11. 54" MIN DISTANCE BETWEEN EDGE OF STREET AND BICYCLE HITCH IF AISLE IS REQUIRED.



BICYCLE HITCH DETAIL
NOT TO SCALE

NOTES:

1. FINAL LOCATION OF INTERIOR BICYCLE RACKS SHALL CONFORM TO ALL ARCHITECTURAL DRAWINGS. CONTRACTOR TO NOTIFY ENGINEER AND ARCHITECT WITH ANY DISCREPANCIES.
2. BICYCLE MOUNT SHALL BE ULTRA SPACE SAVER AS MANUFACTURED BY DERO, OR APPROVED EQUAL.
3. BICYCLES SHALL BE WALL MOUNTED OR FLOOR MOUNTED IN ACCORDANCE WITH MANUFACTURER'S RECOMMENDATIONS.
4. CONTRACTOR TO SUBMIT SHOP DRAWING DETAILED LAYOUT



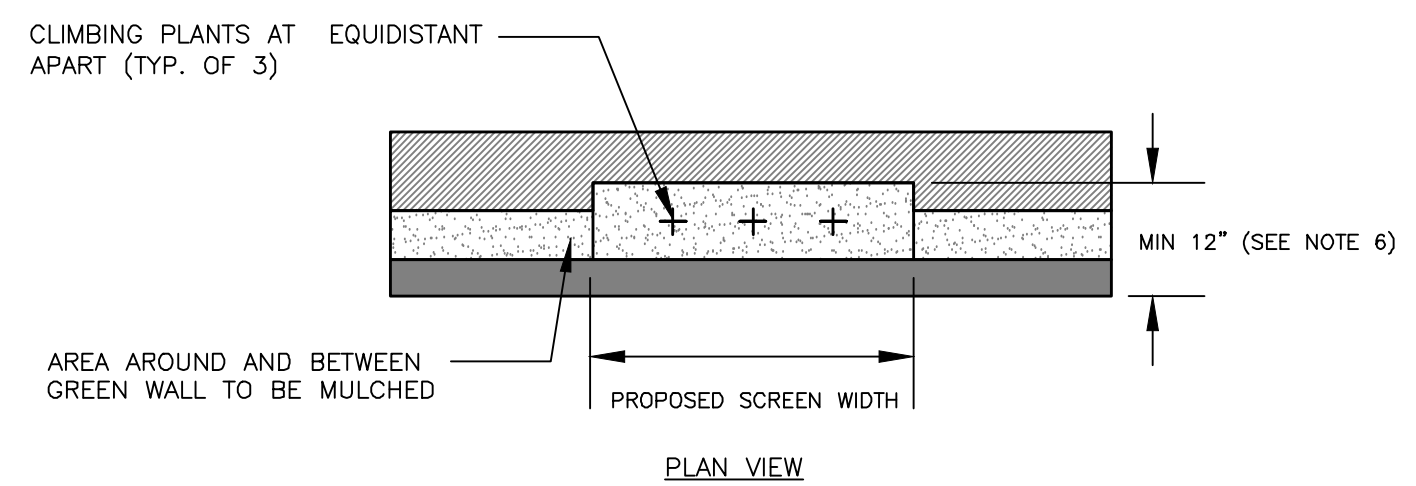
CROSS SECTION VIEW

PLAN VIEW

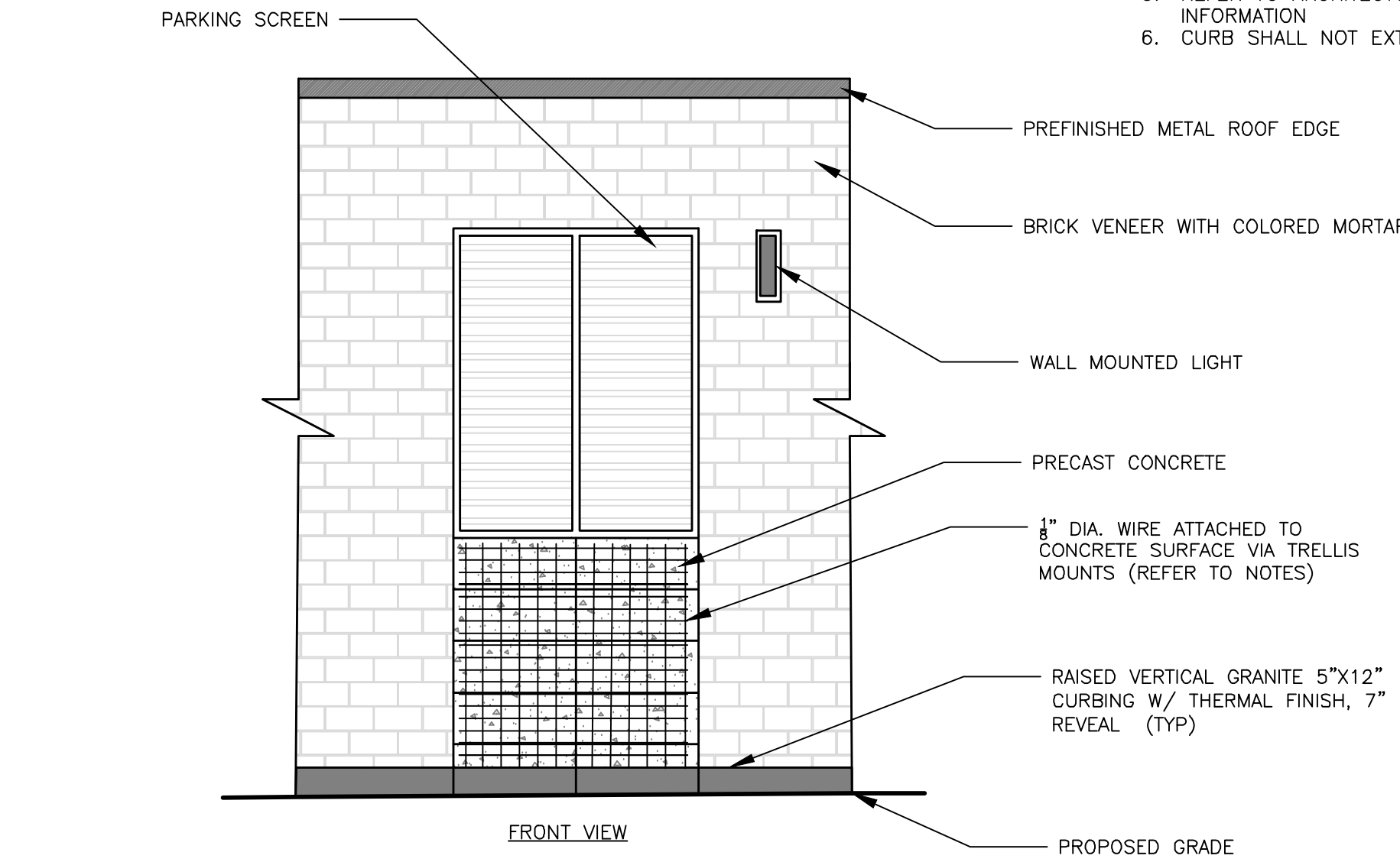
INTERIOR BICYCLE SPACE LAYOUT
NOT TO SCALE

NOTES:

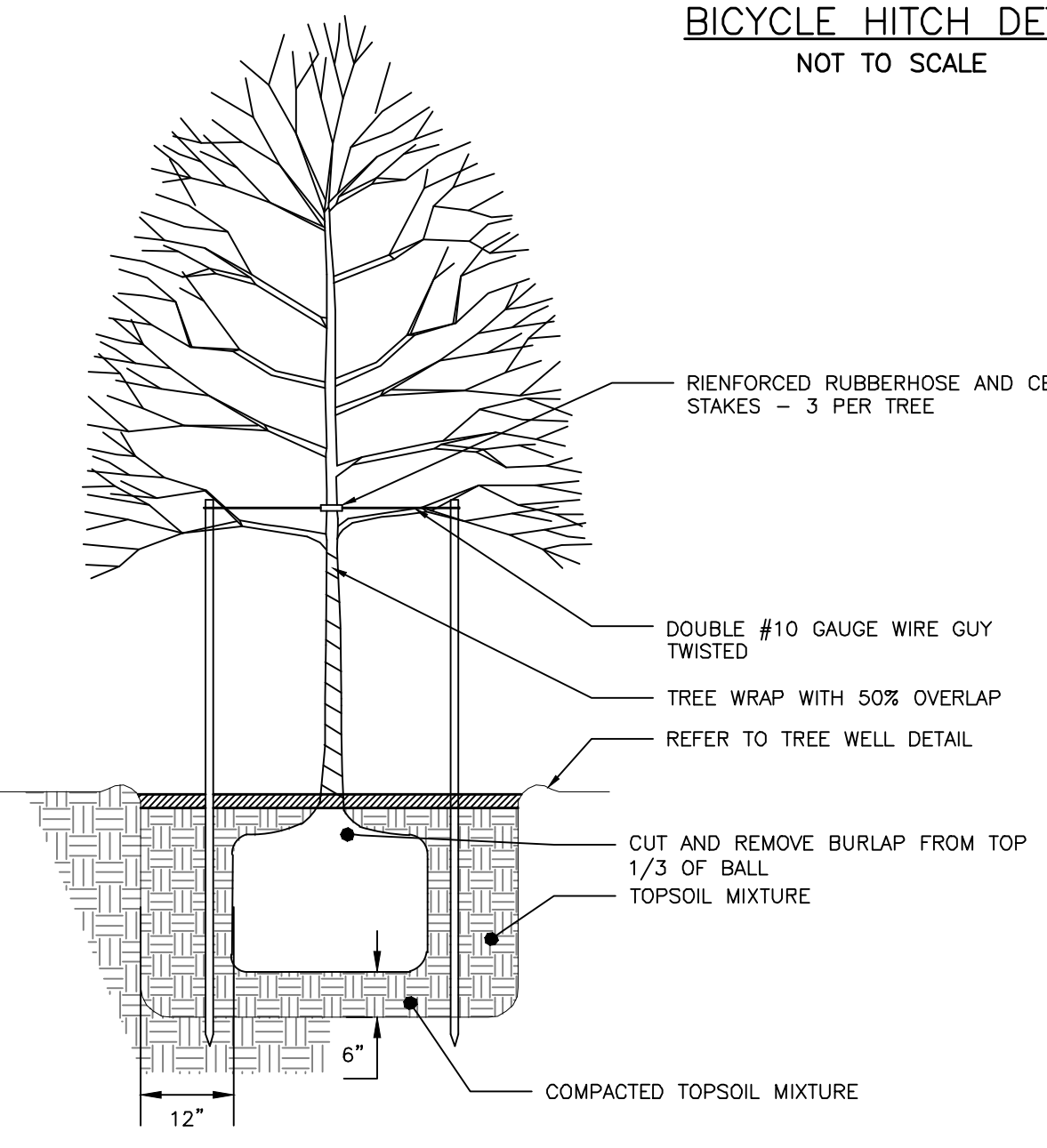
1. WIRE CABLES ARE TO BE ATTACHED PERPENDICULAR TO EACH OTHER FORMING A GRID PATTERN; DUAL-LOCKING TRELLIS CROSS CLAMPS OR AN APPROVED ALTERNATIVE SHALL BE USED AT EACH INTERSECTION.
2. FINAL LOCATION OF TRELLIS MOUNTS WILL BE DEFINED BY THE CONTRACTOR AND APPROVED BY THE ARCHITECT.
3. ALL TRELLIS COMPONENTS TO BE MADE OF SAE 316 STAINLESS STEEL AND MANUFACTURED BY HAYN LINES OR AN APPROVED EQUAL.
4. CONTRACTOR TO INSTALL TRELLIS STRUCTURE IN ACCORDANCE TO MANUFACTURER'S RECOMMENDATIONS. REFER TO ARCHITECTURAL DETAILS FOR ADDITIONAL INFORMATION.
5. CURB SHALL NOT EXTEND BEYOND PROPERTY LINE.



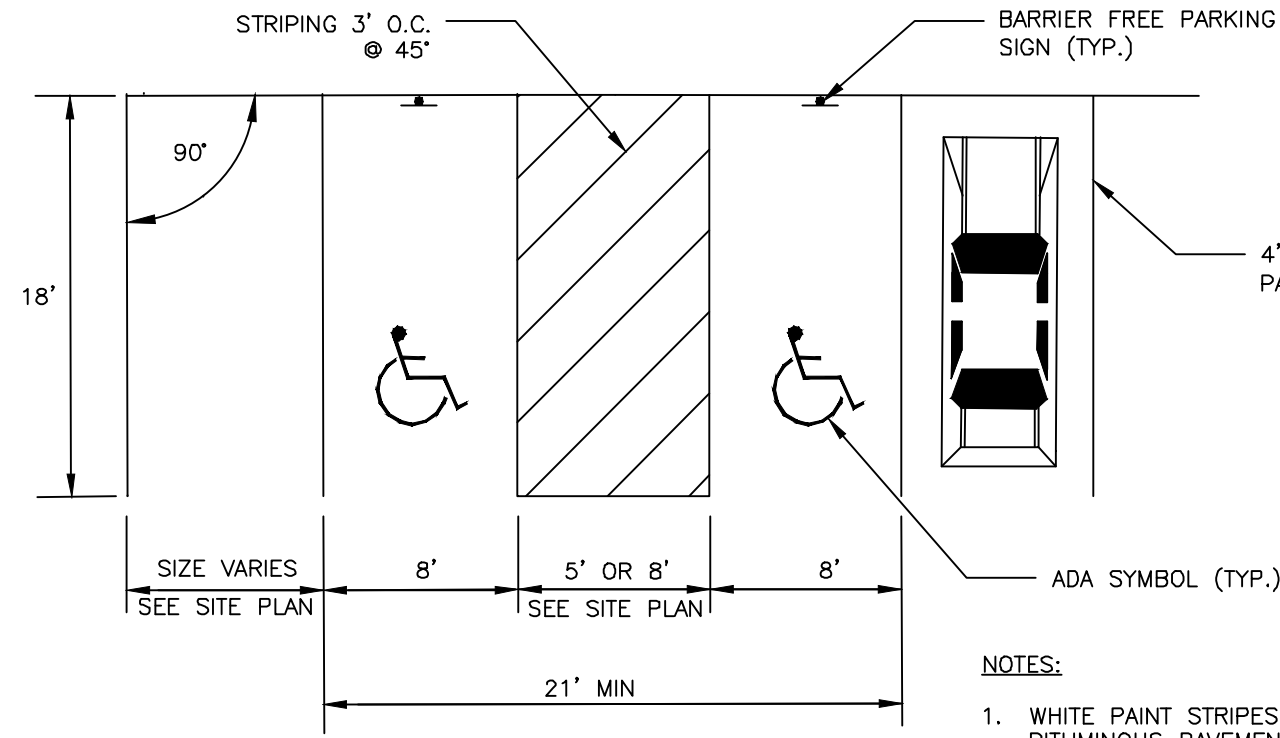
PLAN VIEW



STAINLESS STEEL GREEN WALL TRELLIS SYSTEM
NOT TO SCALE



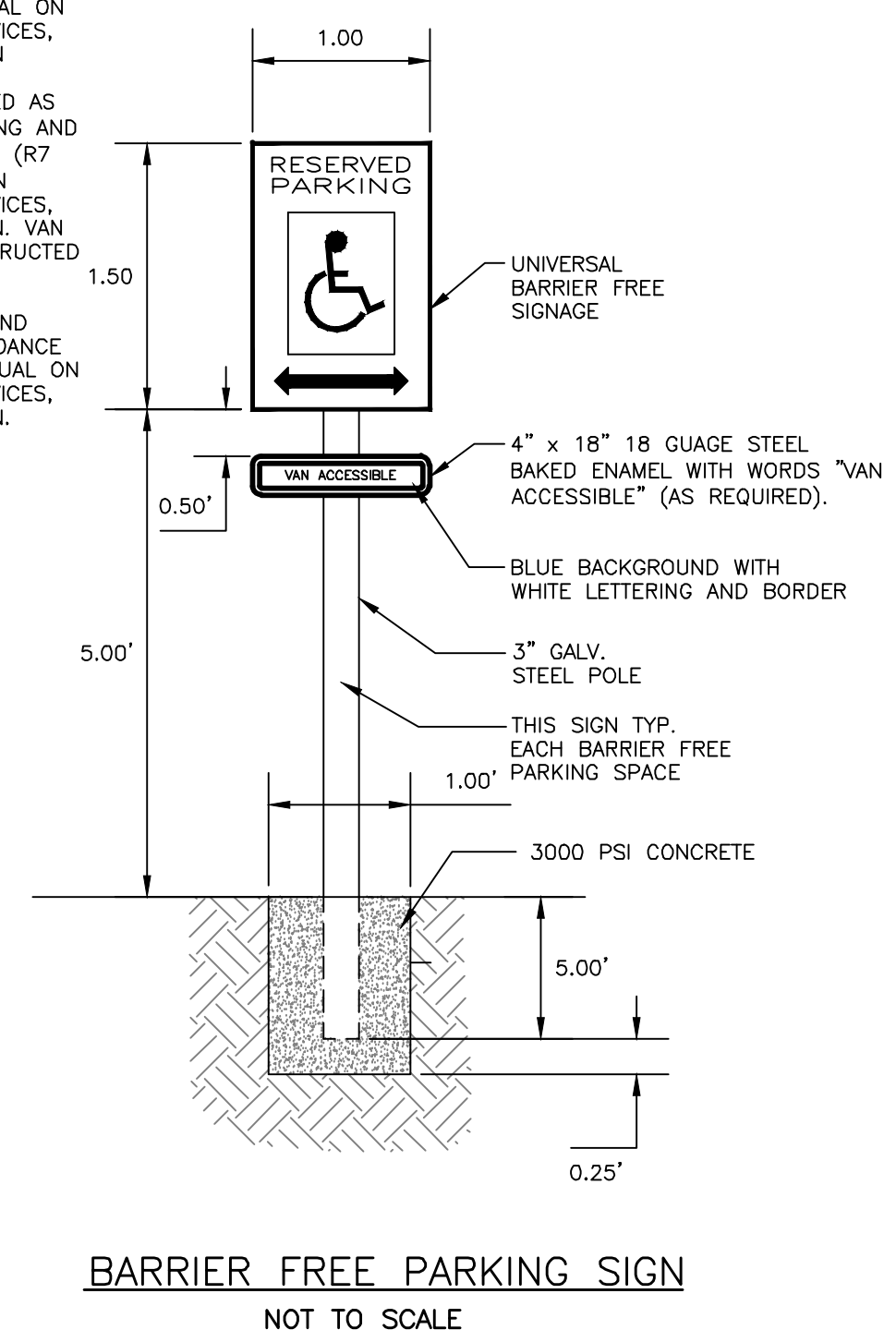
TREE PLANTING DETAIL
NOT TO SCALE



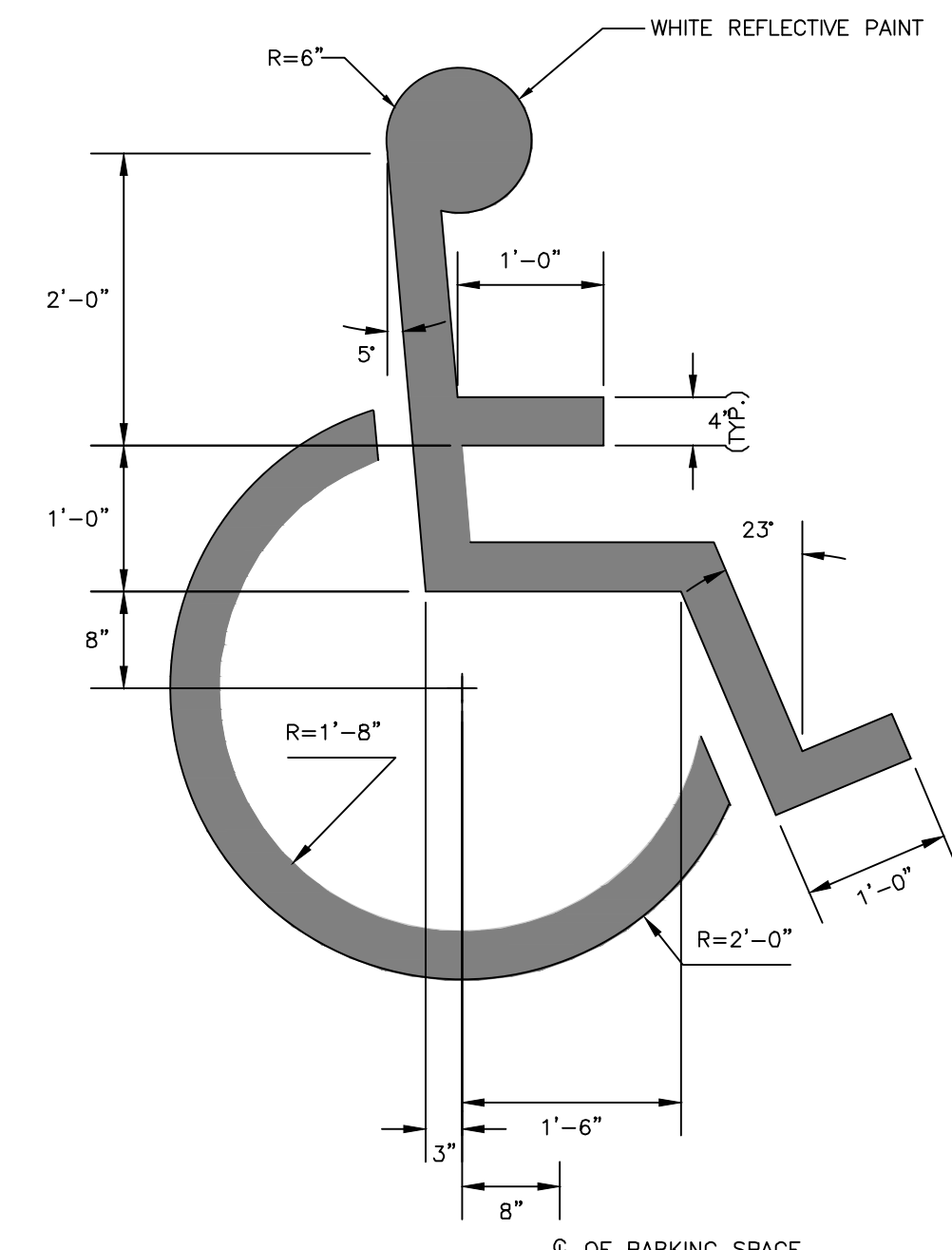
PARKING SPACE DIMENSIONS
NOT TO SCALE

NOTES:

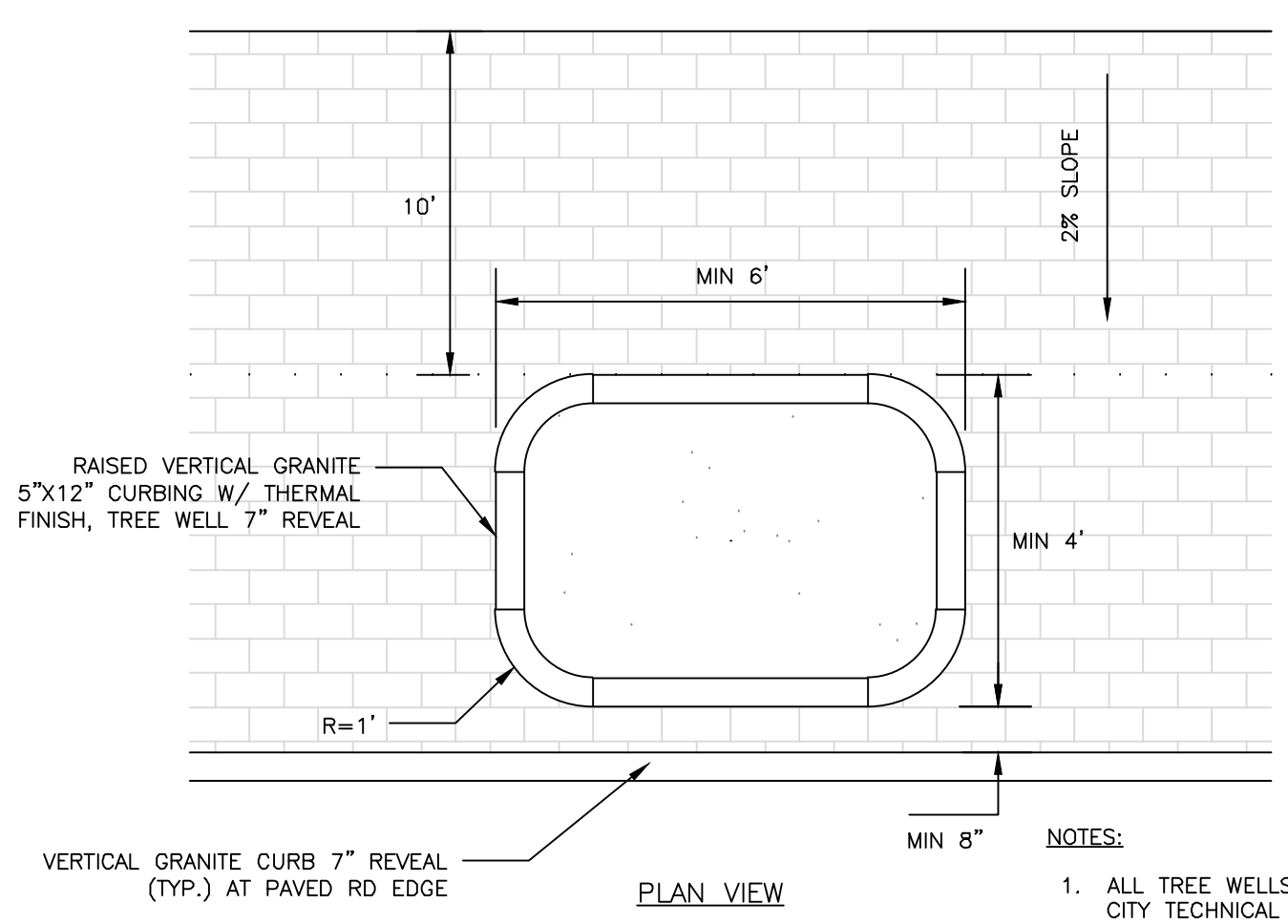
1. ALL ASPECTS OF RESERVED PARKING SIGN CONSTRUCTION SHALL BE IN ACCORDANCE WITH MANUAL ON UNIFORM TRAFFIC CONTROL DEVICES, 2009 OR MOST RECENT EDITION.
2. SIGN SHALL BE CONSTRUCTED AS SIGN R7-8 UNDER THE "PARKING AND STANDING SIGNS AND PLAQUES" (R7 SERIES) WITHIN THE MANUAL ON UNIFORM TRAFFIC CONTROL DEVICES, 2009 OR MOST RECENT EDITION. VAN ACCESSIBILITY SHALL BE CONSTRUCTED AS SIGN R7-8a OR R7-8b.
3. SIGN POST CONSTRUCTION AND MOUNTING SHALL BE IN ACCORDANCE WITH CHAPTER 2A OF THE MANUAL ON UNIFORM TRAFFIC CONTROL DEVICES, 2009 OR MOST RECENT EDITION.



BARRIER FREE PARKING SIGN
NOT TO SCALE



INTERNATIONAL BARRIER FREE SYMBOL
NOT TO SCALE



RAISED GRANITE CURB TREEWELL
NOT TO SCALE

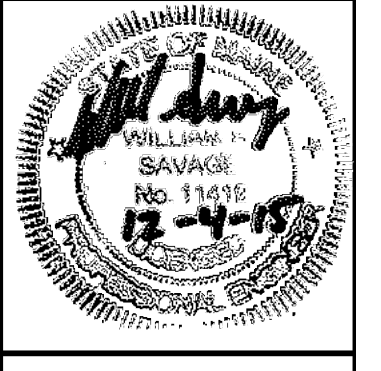
- NOTES:**
1. ALL TREE WELLS SHALL COMPLY WITH CITY TECHNICAL STANDARDS AND MUST BE APPROVED BY THE CITY ARBORIST
 2. GRANITE CURB TREE WELL SHALL BE SIDEWALK MATERIAL PER CITY SIDEWALK MATERIAL POLICY

ISSUED FOR	BY
PRELIM. APPLICATION	WHS
PC DD SET	WHS
PC PROGRESS SET	WHS
COMMENT/RESPONSE	WHS
FINAL SUBMISSION	WHS
BIDDING	WHS
COA	WHS
FOR CONSTRUCTION	WHS
CITY COMMENTS	WHS
CITY APPROVED PLAN	WHS
REVISION	REV. DATE

SITE DETAILS 2
667 CONGRESS STREET REDEVELOPMENT
REDFERN LONGFELLOW, LLC.
P.O. BOX 8818 PORTLAND, ME 04104

ACORN ENGINEERING, INC.
158 DANFORTH (207) 779-2665
MAINE 04102

FILE:	1060_DETAILS
DATE:	4/20/2015
JN:	1060
SCALE:	NTS
DESIGNED BY:	WHS
DRAWN BY:	MAG
CHECKED BY:	WHS



DRAWING NO.
C-41

ISSUED FOR
CONSTRUCTION