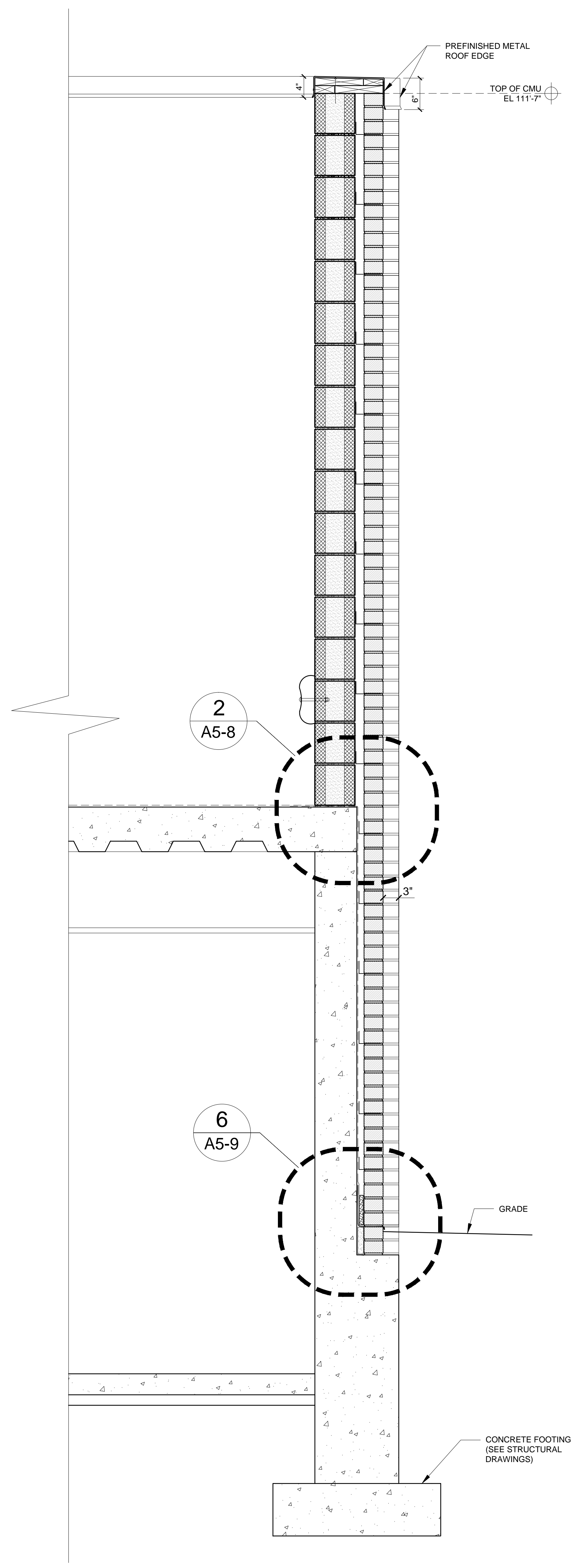
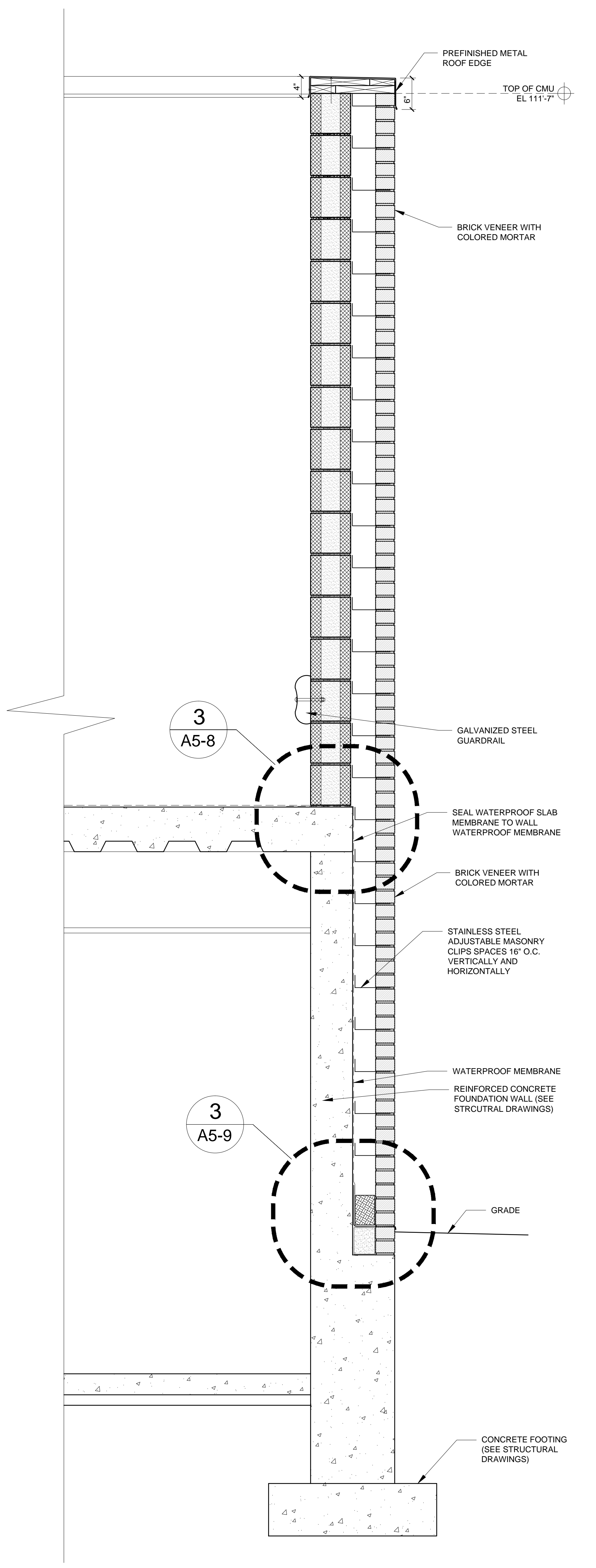


1 WALL SECTION AT PARKING GARAGE (AT RECESSED PRECAST) (NORTH WALL ONLY)
 1" = 1'-0"



2 WALL SECTION AT PARKING GARAGE (AT RECESSED BRICK) (NORTH WALL ONLY)
 1" = 1'-0"



3 WALL SECTION AT PARKING GARAGE (TYPICAL WALL CONDITION FOR NORTH WALL ONLY)
 1" = 1'-0"