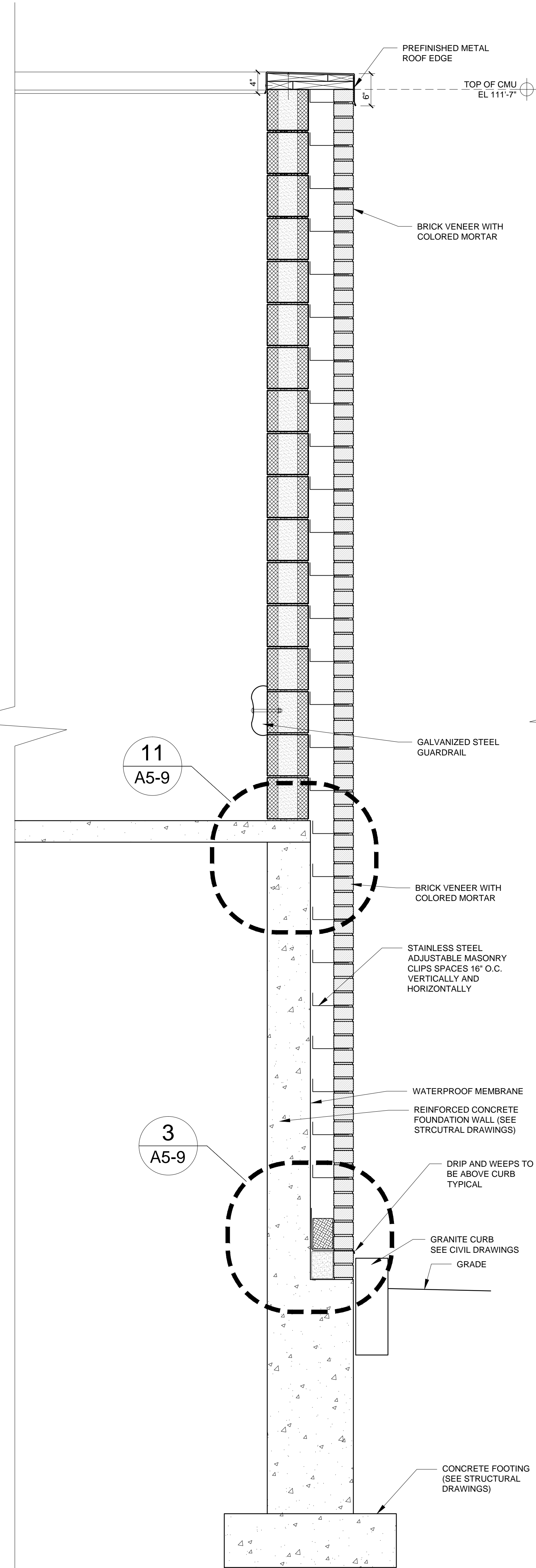
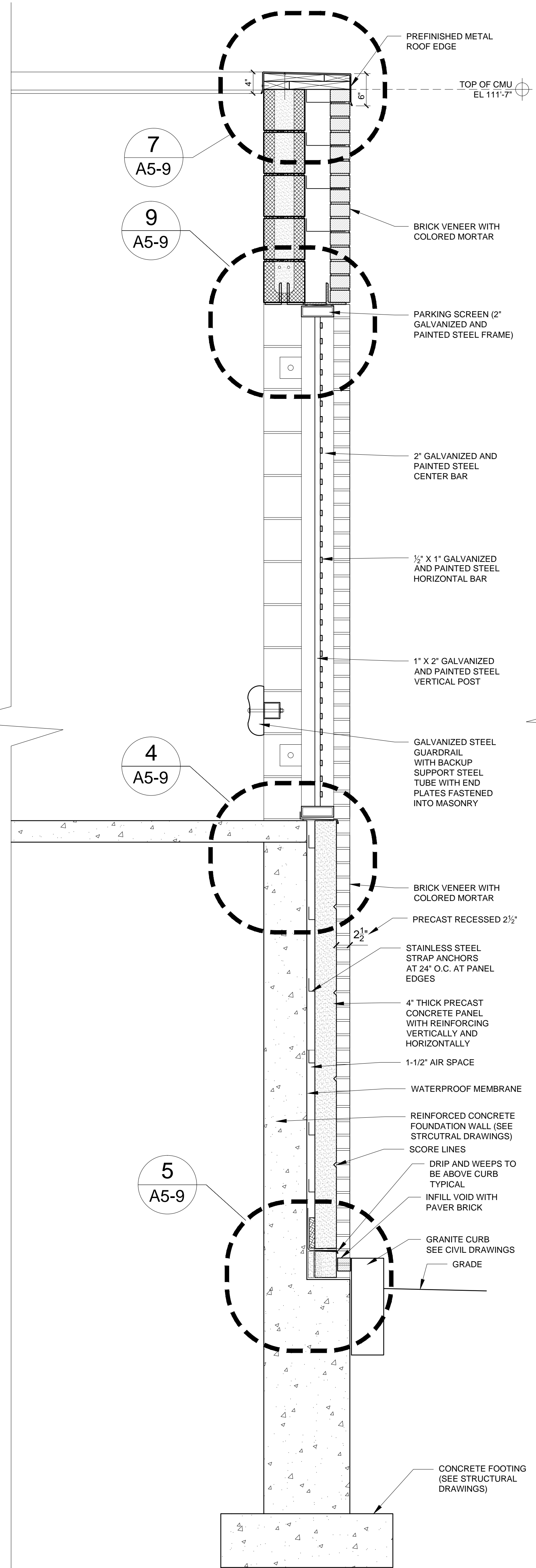


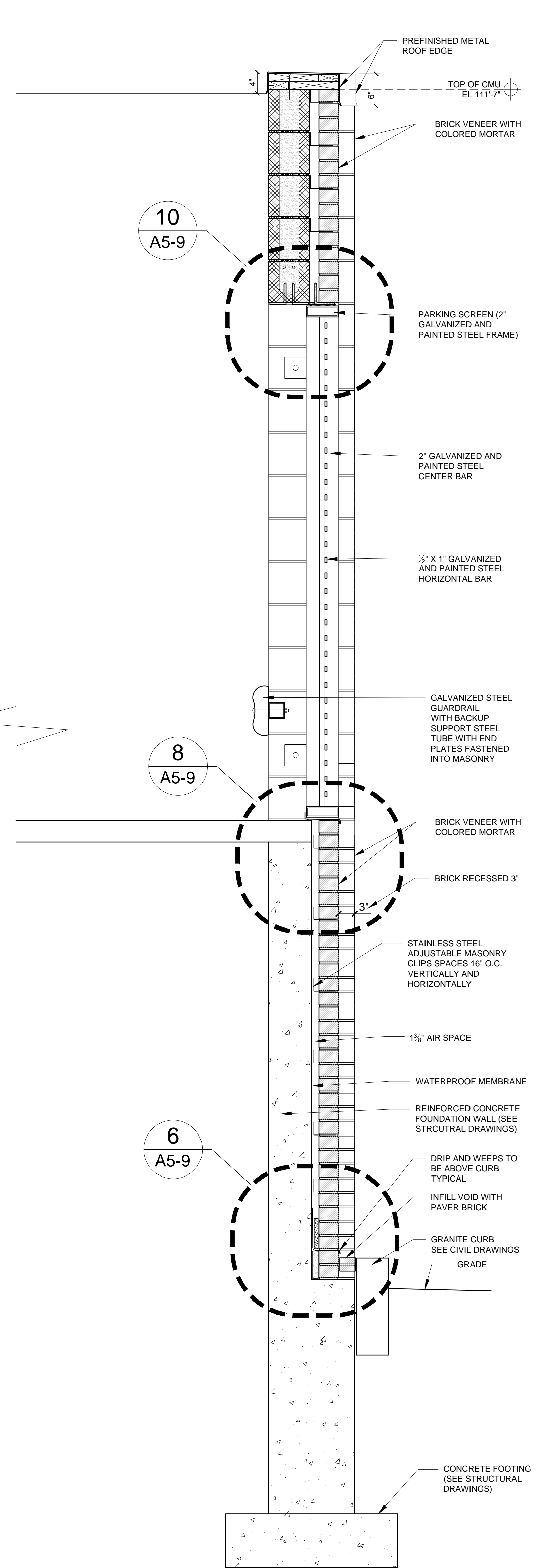
4 WALL SECTION AT PARKING GARAGE (TYPICAL WALL CONDITION)
1/4" = 1'-0"



3 WALL SECTION AT PARKING GARAGE (TYPICAL WALL CONDITION)
1/4" = 1'-0"



2 WALL SECTION AT PARKING GARAGE (AT RECESSED PRECAST)
1/4" = 1'-0"



1 WALL SECTION AT PARKING GARAGE (AT RECESSED BRICK)
1/4" = 1'-0"