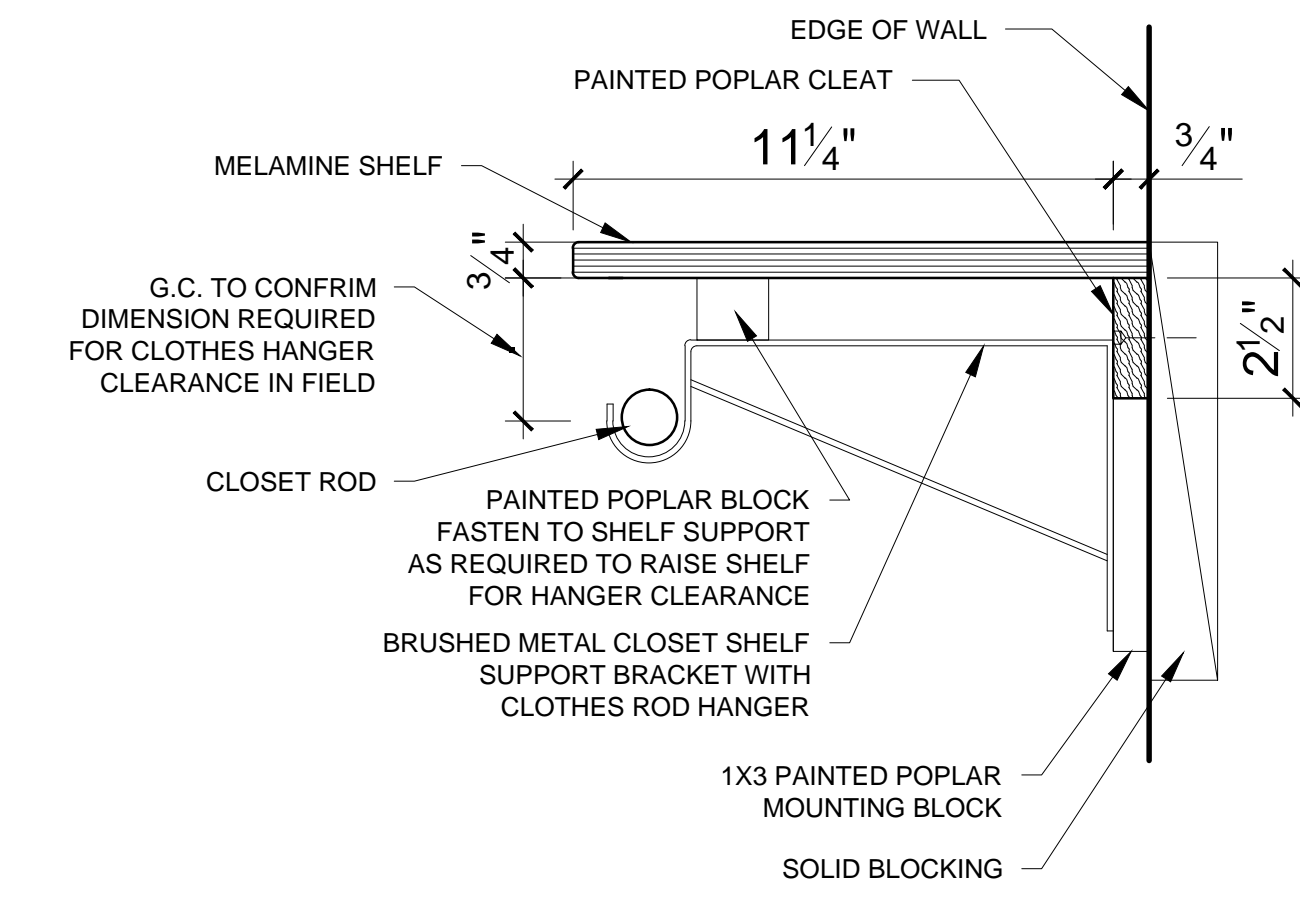
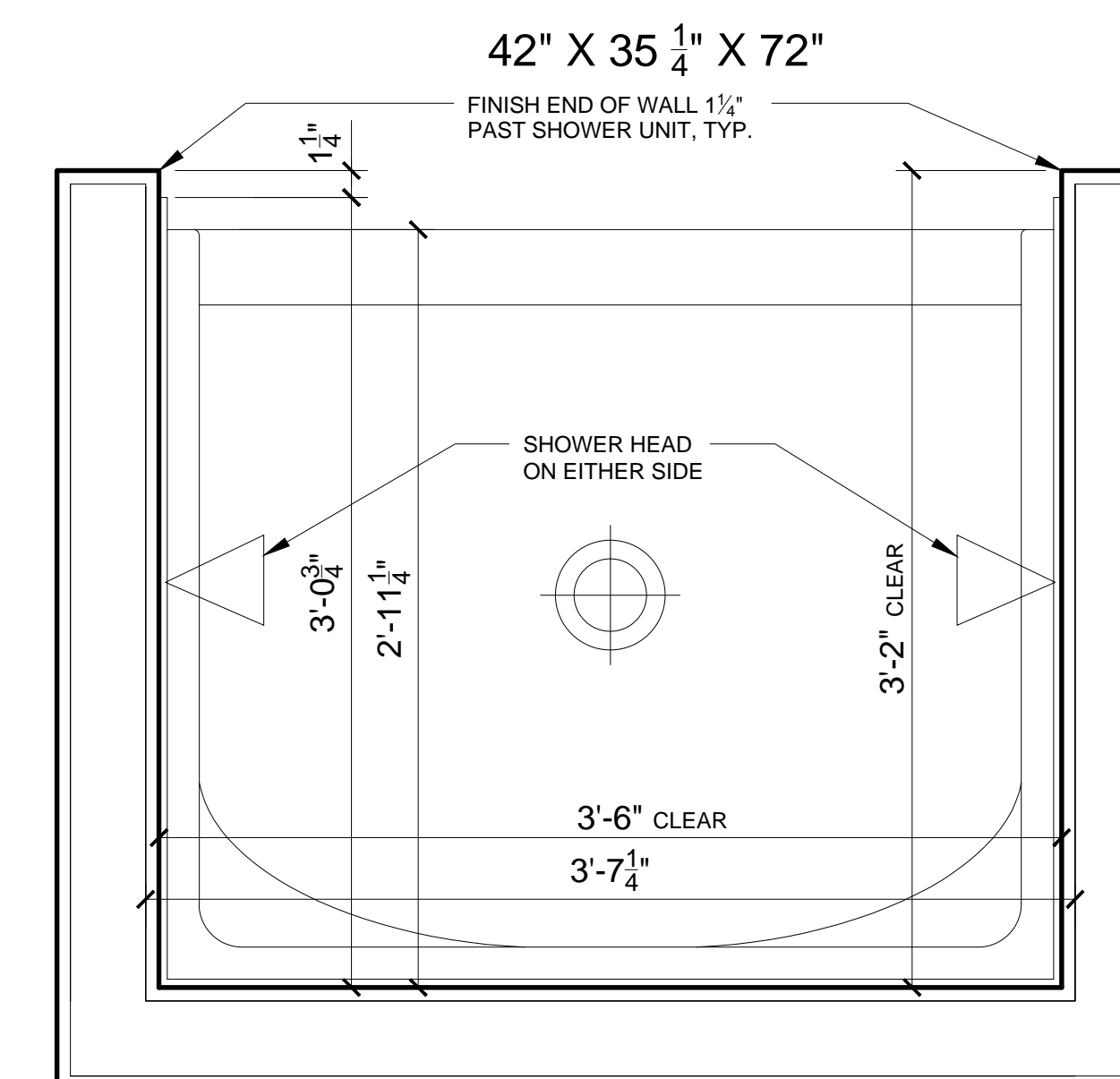


8 SECTION DETAIL AT ADA SINK DETAIL  
 3/8" = 1'-0"



7 CLOSET SHELF AND ROD DETAIL  
 3/8" = 1'-0"

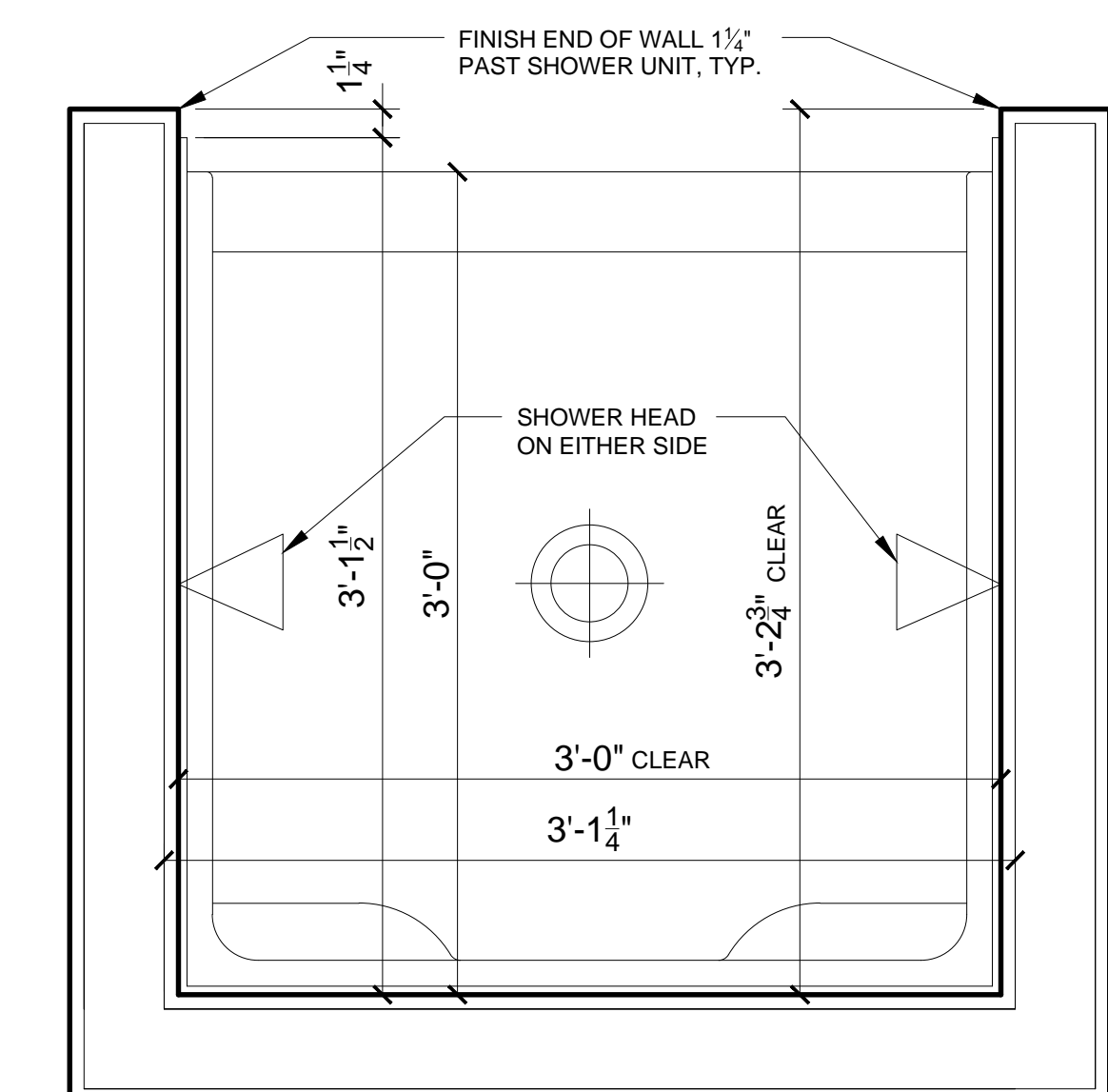
AKER SHOWER UNIT - 141025  
 S-42



6 3'-6" WIDE SHOWER UNIT  
 1/16" = 1'-0"

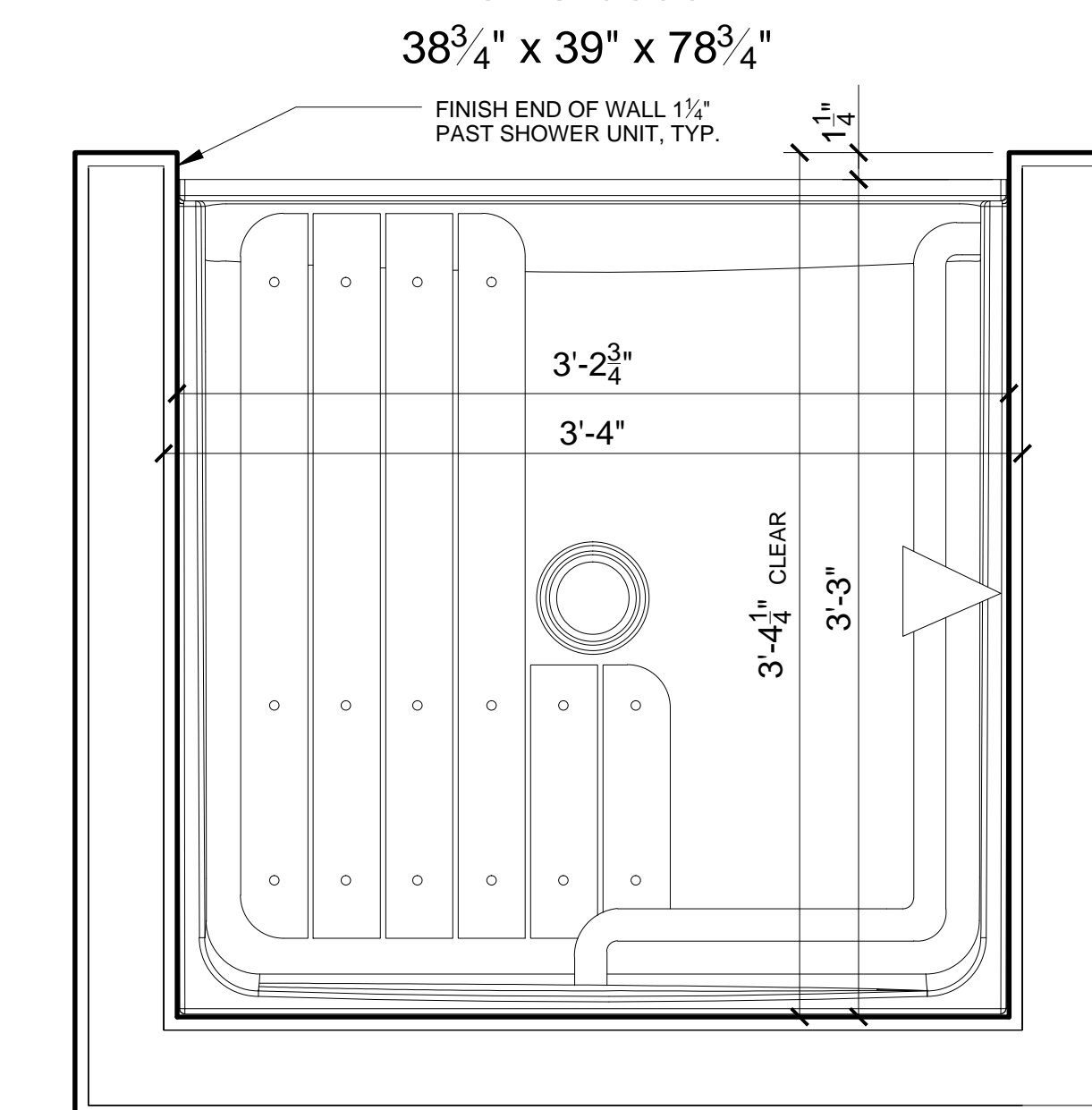
GENERAL CONTRACTOR TO VERIFY AND ADJUST ALL TUB AND SHOWER DIMENSION BASED ON APPROVED SUBMITTALS

AKER SHOWER UNIT - 141022  
 S-36  
 36" X 36" X 72"



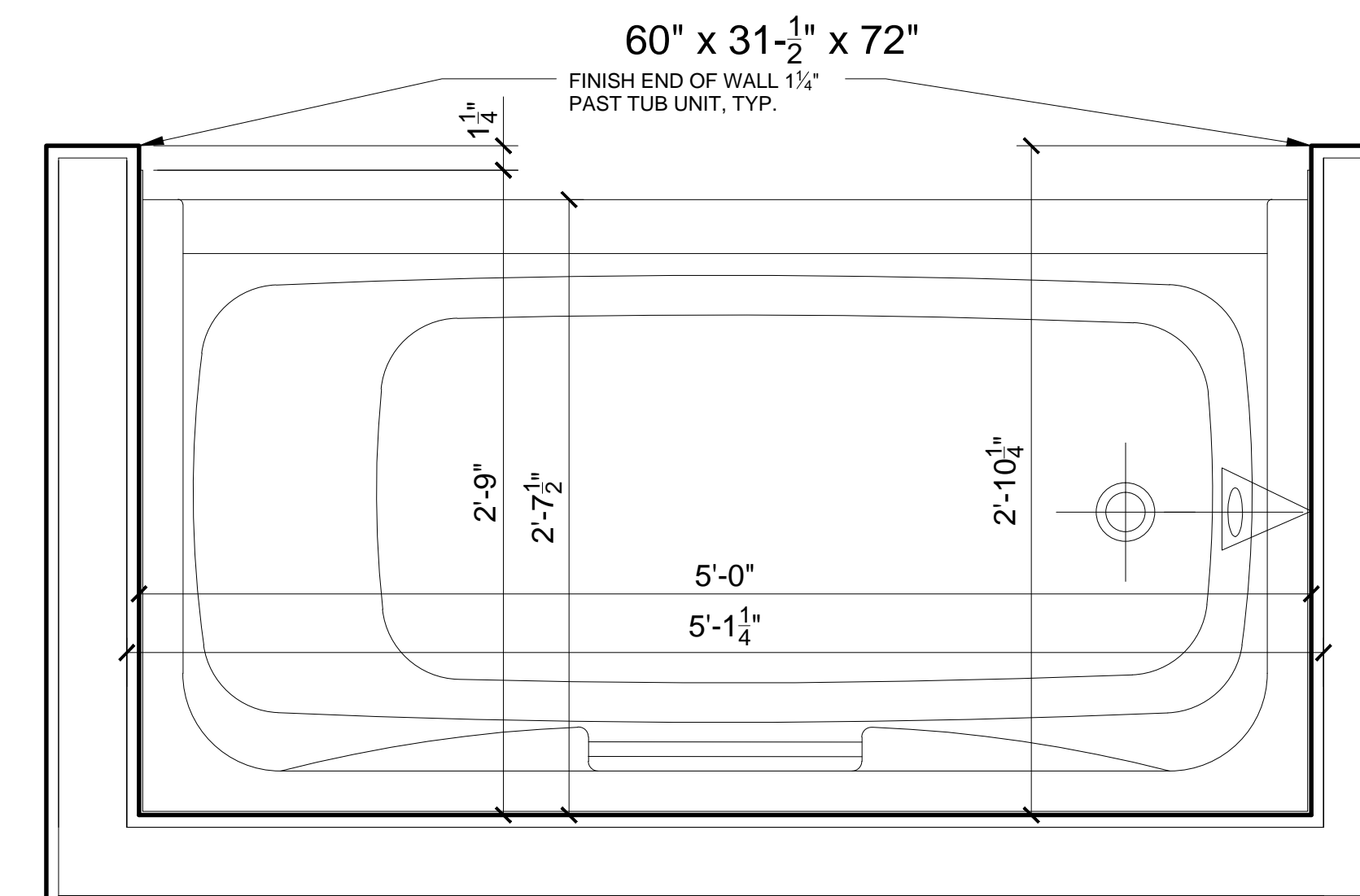
5 3'-0" WIDE SHOWER UNIT  
 1/16" = 1'-0"

AKER ADA TRANSFER SHOWER UNIT WITH GRAB BARS AND FOLD DOWN SEAT  
 OPS-3636



1 ADA TRANSFER SHOWER UNIT  
 1/16" = 1'-0"

AKER TUB UNIT - 141000  
 CM-60



2 TUB UNIT  
 1/32" = 1'-0"

REFLECTED CEILING PLAN NOTES

- 1.) G.C. TO COORDINATE LOCATIONS OF PLUMBING CLEAN OUTS WITH ACCESS PANELS AS SHOWN ON REFLECTED CEILING PLANS
- 2.) G.C. TO PROVIDE ACCESS PANELS AS REQUIRED FOR ALL ELEMENTS (SPRINKLER, VALVES, ETC) NOT SHOWN ON THIS REFLECTED CEILING PLAN)
- 3.) G.C. TO PROVIDE METAL FRAMING AND BLOCKING REQUIRED FOR ALL ACCESS PANELS AND CONTROL JOINTS
- 4.) ALL ACCESS PANELS TO BE FIRE RATED TO MATCH THE CEILING THEY ARE INSTALLED WITHIN

UNIT NOTES

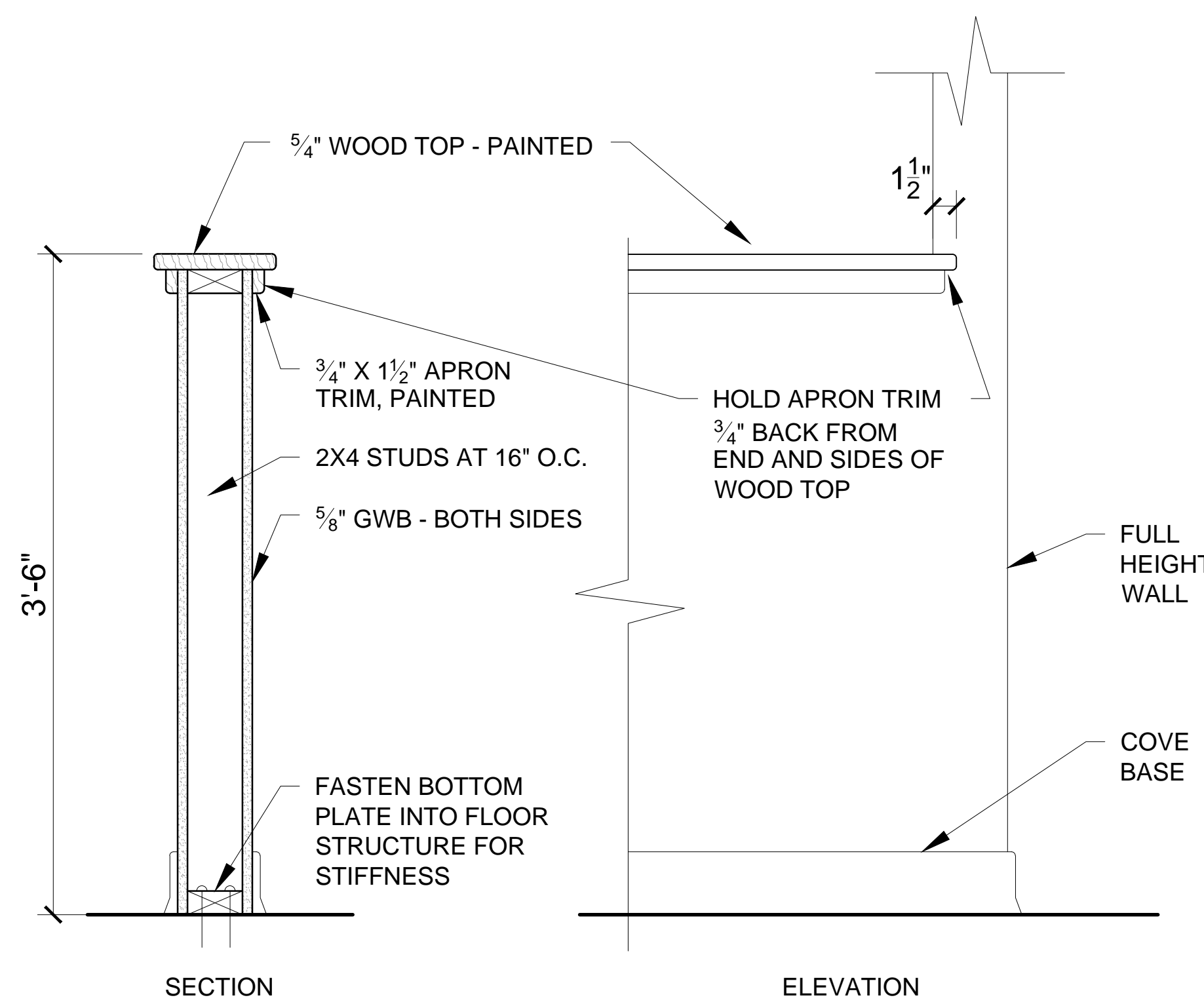
- 1.) CEILING HEIGHTS, WINDOW HEAD AND SILL HEIGHTS VARY FROM FLOOR TO FLOOR. INTERIOR ELEVATIONS GRAPHICALLY DEPICT ONE FLOOR ONLY. FOR HEIGHT INFORMATION REFER TO BUILDING SECTIONS AND WALL SECTIONS
- 2.) G.C. TO CONFIRM AND COORDINATE ALL ROUGH FRAMING, DIMENSIONS FOR TUBS, SHOWERS, BUILT-IN FIXTURES ETC. G.C. TO CONFIRM AND COORDINATE ALL CABINERY AND APPLIANCE DIMENSIONS
- 3.) PROVIDE APPROPRIATE FIRE TREATED BLOCKING IN WALLS BEHIND ALL FIXTURES, PARTITIONS AND ACCESSORIES. BLOCKING FOR GRAB BARS TO BE PROVIDED IN WALLS OF BATHROOMS IN ALL UNITS
- 4.) PROVIDE MOISTURE RESISTANT GWB AT ALL WALLS AND CEILINGS IN BATHROOMS TYPICAL
- 5.) SET ALL CLOTHES WASHERS IN PANS WITH WATER SENSOR
- 6.) REFER TO ELECTRICAL AND MECHANICAL DRAWINGS FOR ADDITIONAL INFORMATION REGARDING LIGHTING, DIFFUSERS, ETC.
- 7.) PROVIDE FIRE EXTINGUISHER ON BRACKET IN BASE CABINET BELOW KITCHEN SINK - TYPICAL
- 8.) HANG HOT WATER HEATER FROM DECK ABOVE. (SEE DETAIL ON TYPICAL UNIT DETAILS SHEET)
- 9.) WHERE DROPPED SOFFITS AND CEILINGS ARE SHOWN, THESE ARE IN ADDITION TO THE FIRE RATED GWB CEILING ABOVE WHICH IS PART OF THE RATED ASSEMBLY
- 10.) WHERE PLUMBING VALVES (TUB, SHOWER, ETC) ARE LOCATED IN FIRE RATED WALLS, PROVIDE FIRE RATED BOX IN WALL FOR VALVE TO BE INSTALLED WITHIN

CABINERY AND APPLIANCE ABBREVIATIONS

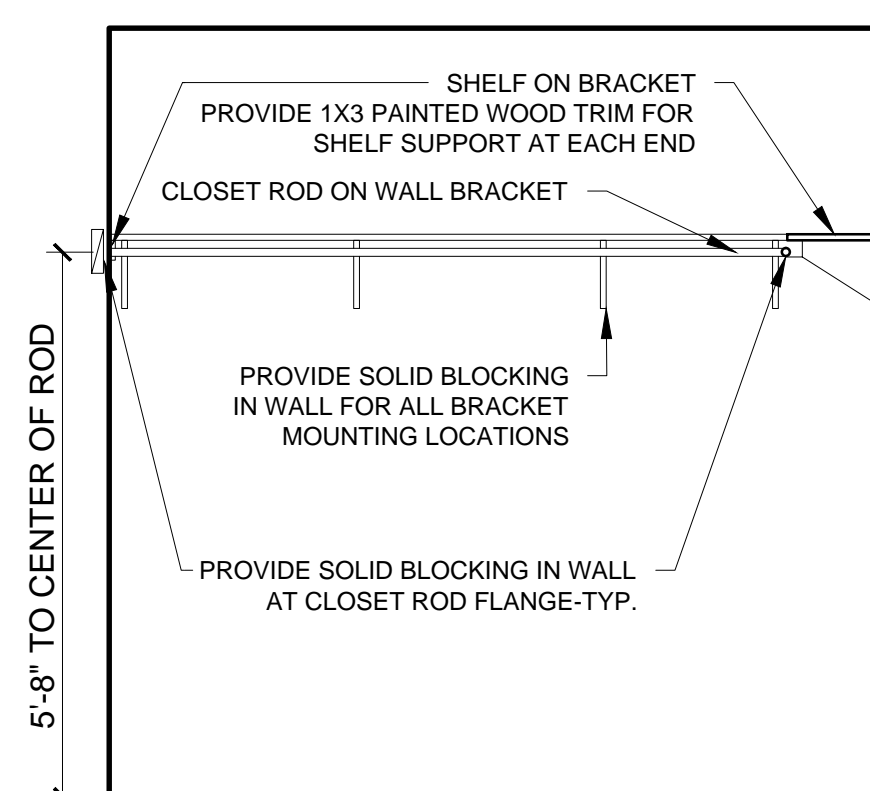
- DB = DRAWER BASE
- DRB = DOOR BASE
- SB = SINK BASE
- WC = WALL CABINET
- WC(24) = WALL CABINET 24" DEEP
- PJ = PANTRY UNIT 24" DEEP
- OS = OPEN SHELVES
- RA = RANGE
- DW = DISHWASHER
- REF = REFRIGERATOR

REFLECTED CEILING PLAN AND LIGHTING LEGEND

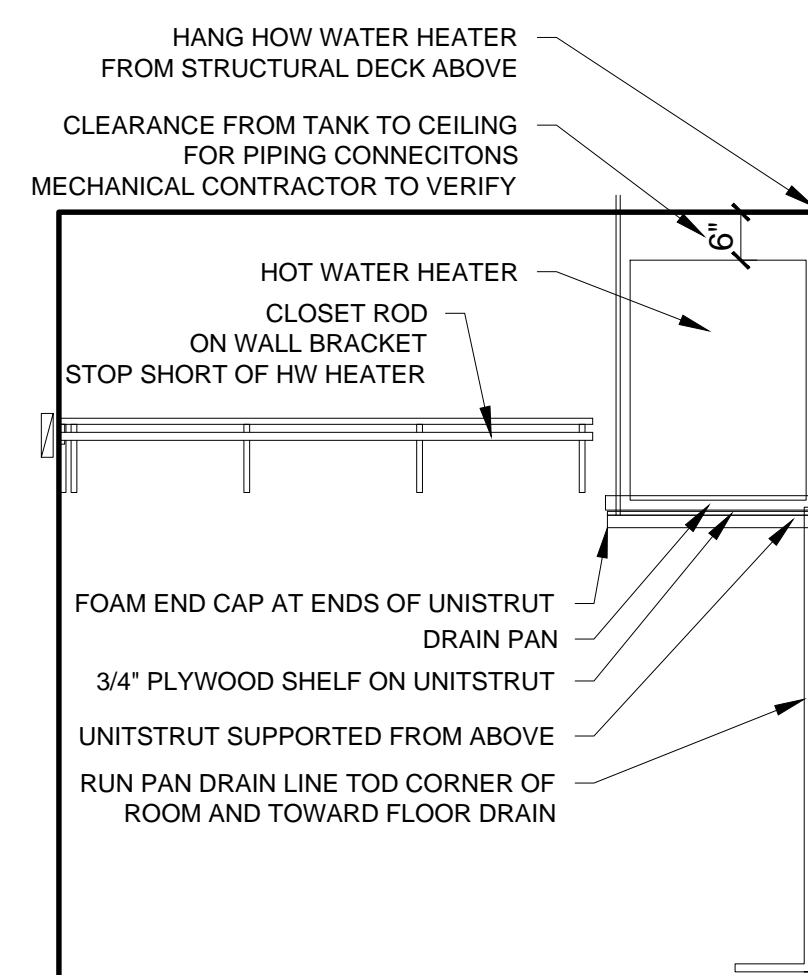
| SYMBOL | TAG | DESCRIPTION                         |
|--------|-----|-------------------------------------|
| ○      | A   | SURFACE MOUNT - TBD                 |
| ○      | B   | SURFACE MOUNTED - TBD               |
| ○      | C   | SURFACE MOUNT - IN CLOSETS          |
| ○      | D   | SURFACE MOUNTED ON WALL ABOVE DOOR  |
| ○      | E   | WALL SCONCE IN BATHROOM OVER VANITY |
| ○      | F   | SURFACE MOUNT - WET LOCATION        |
| ○      | H   | SURFACE MOUNT CENTER IN BEDROOMS    |
| ○      | J   | SURFACE MOUNT - WET LOCATION        |
| ○      | K   | EXTERIOR CLUT OFF DOWN LIGHT        |
| ■      |     | CEILING GRILLE                      |



9 DETAIL AT HALF WALL  
 1/16" = 1'-0"



3 TYPICAL CLOSET SHELF AND ROD  
 1/2" = 1'-0"



4 TYPICAL HOT WATER HEATER DETAIL  
 1/32" = 1'-0"