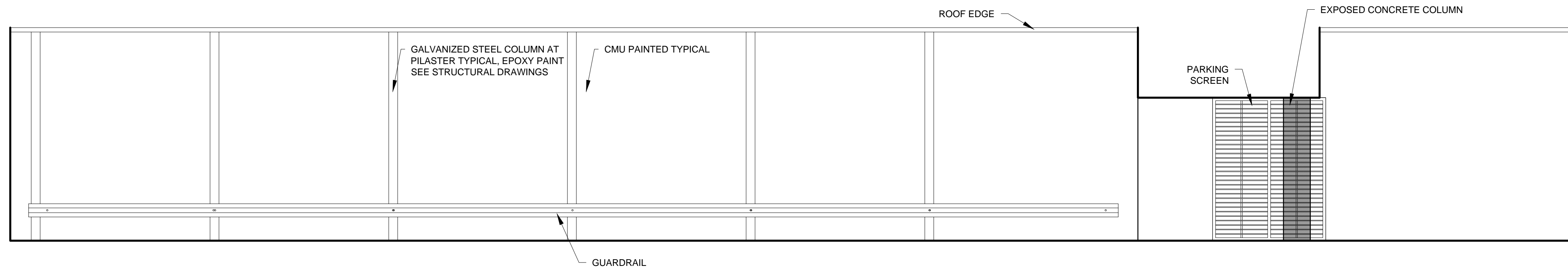
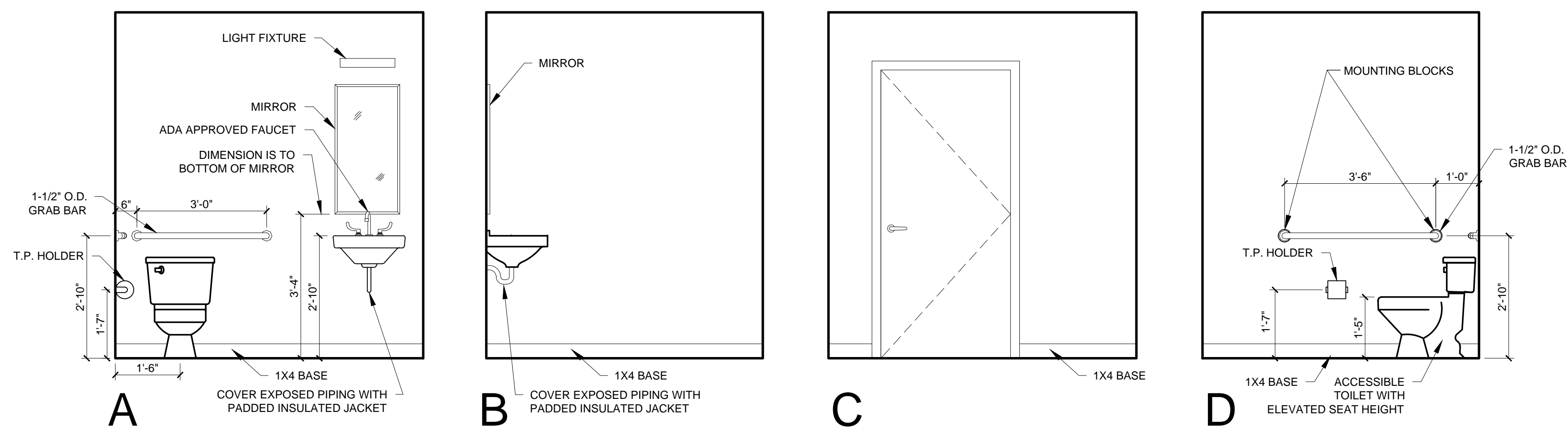




© 2015 RYAN SENATORE ARCHITECTURE



1 INTERIOR ELEVATIONS
1/4" = 1'-0"



1 PUBLIC BATHROOMS INTERIOR ELEVATIONS
1/2" = 1'-0"

667 CONGRESS STREET
APARTMENTS
PORTLAND, MAINE



RYAN SENATORE
ARCHITECTURE
565 CONGRESS STREET
PORTLAND, MAINE 04101
207-650-6414
senatorearchitecture.com

CONSULTANTS:
STRUCTURAL:
Structural Integrity
77 Oak Street
Portland, ME 04101
207-774-4614

REVISIONS:

DATE: 2 NOVEMBER 2015

PROJECT No. 1503

DRAWN BY: RJS / RRT

CHECKED BY: RJS

SCALE: AS NOTED

SHEET TITLE:
PARKING AREA
INTERIOR ELEVATIONS
CONT. AND PUBLIC
BATHROOMS

A4-2