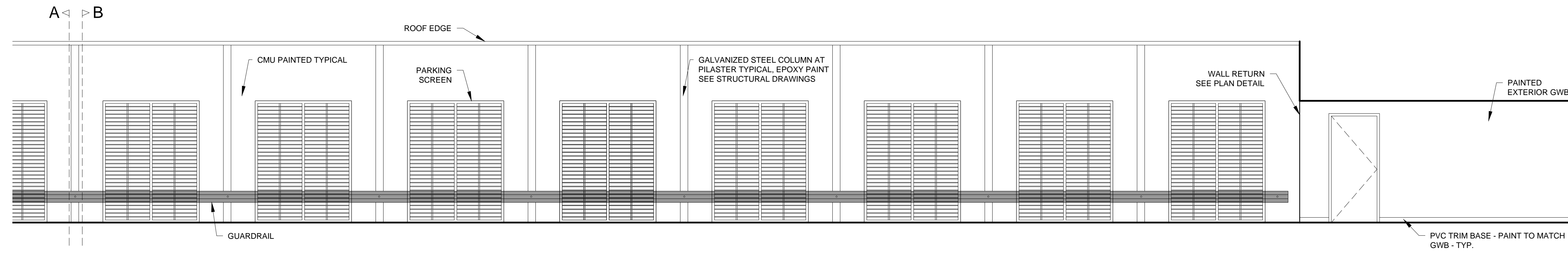
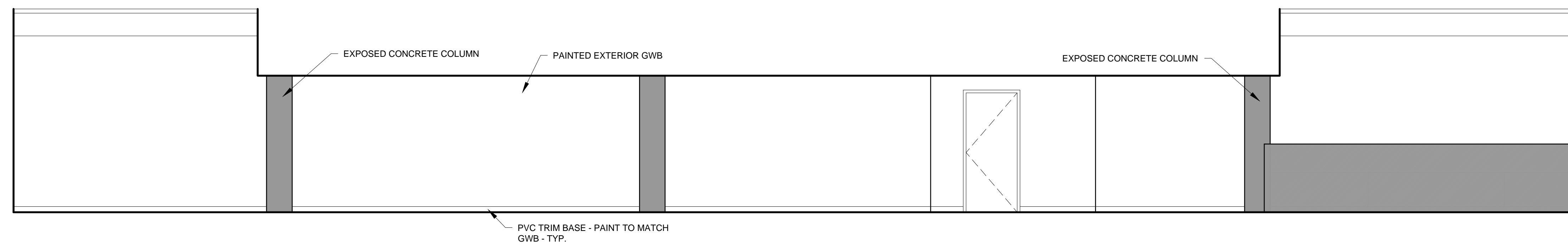


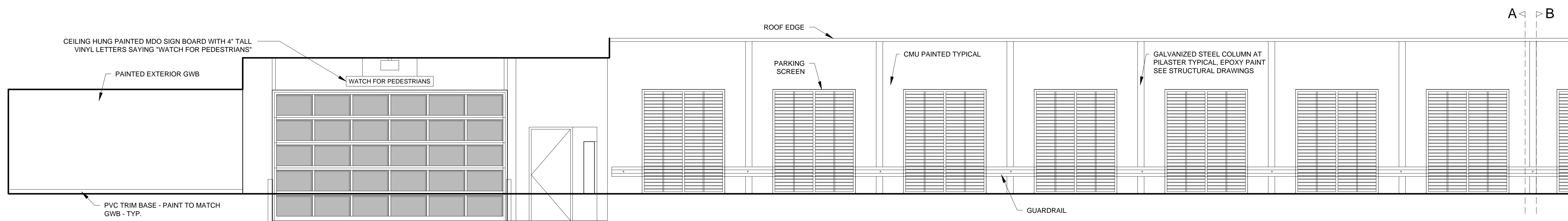
1 INTERIOR ELEVATIONS (A)  
1/4" = 1'-0"



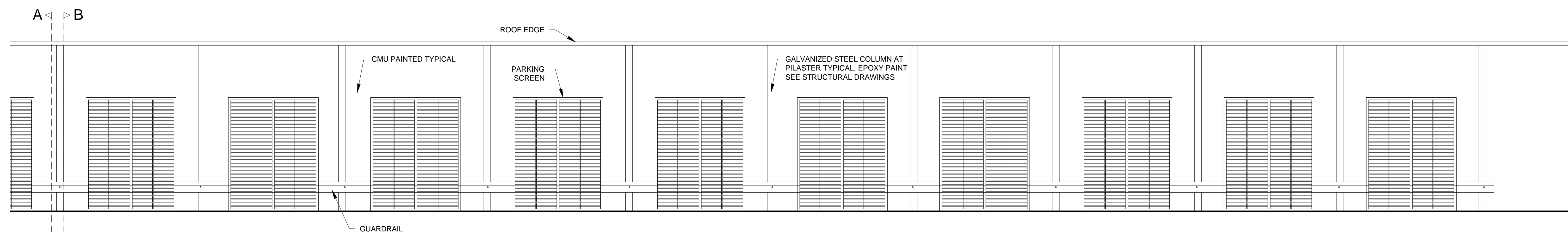
1 INTERIOR ELEVATIONS (B)  
1/4" = 1'-0"



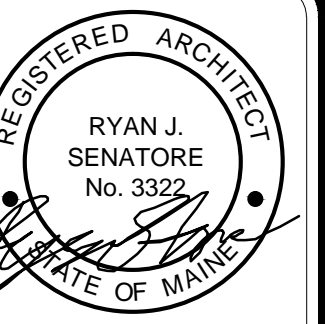
2 INTERIOR ELEVATIONS  
1/4" = 1'-0"



3 INTERIOR ELEVATIONS (A)  
1/4" = 1'-0"



3 INTERIOR ELEVATIONS (B)  
1/4" = 1'-0"



© 2015 RYAN SENATORE ARCHITECTURE

667 CONGRESS STREET  
APARTMENTS  
PORTLAND, MAINE



RYAN SENATORE  
ARCHITECTURE  
565 CONGRESS STREET  
PORTLAND, MAINE 04101  
207-450-6414  
senatorearchitecture.com

CONSULTANTS:  
STRUCTURAL: Structural Integrity  
17 Oak Street  
Portland, ME 04101  
207-774-4614

REVISIONS:

DATE: 2 NOVEMBER 2015  
PROJECT No. 1523  
DRAWN BY: RJS / RRT  
CHECKED BY: RJS  
SCALE: AS NOTED

SHEET TITLE:  
PARKING AREA  
INTERIOR  
ELEVATIONS -  
FIRST FLOOR

A4-1