

© 2015 RYAN SENATORE ARCHITECTURE

667 CONGRESS STREET  
APARTMENTS  
PORTLAND, MAINE



RYAN SENATORE  
ARCHITECTURE  
565 CONGRESS STREET  
PORTLAND, MAINE 04101  
207-650-6414  
senatorearchitecture.com

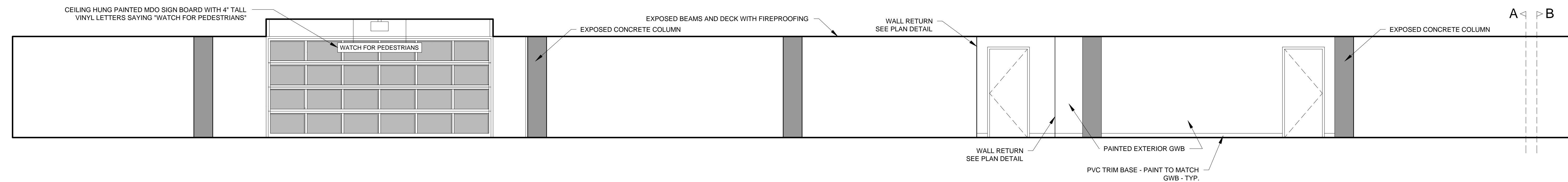
CONSULTANTS:  
STRUCTURAL  
Structural Integrity  
77 Oak Street  
Portland, ME 04101  
207-774-8614

REVISIONS:

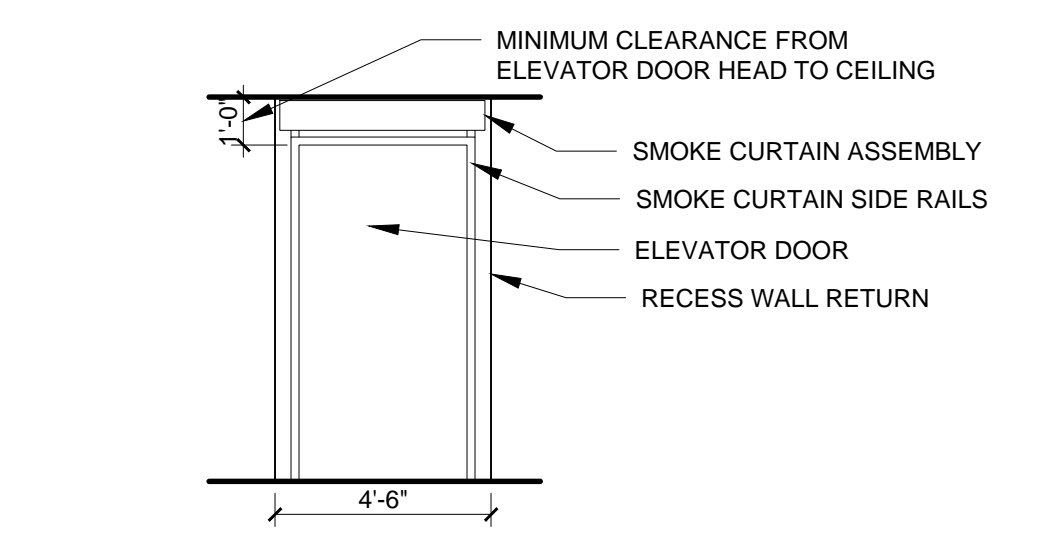
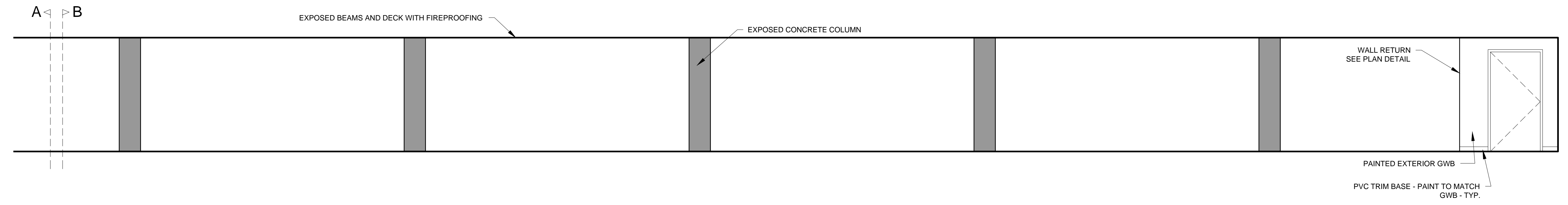
DATE: 2 NOVEMBER 2015  
PROJECT No. 1503  
DRAWN BY: RJS / RRT  
CHECKED BY: RJS  
SCALE: AS NOTED

SHEET TITLE:  
PARKING AREA  
INTERIOR  
ELEVATIONS -  
BASEMENT

A4-0

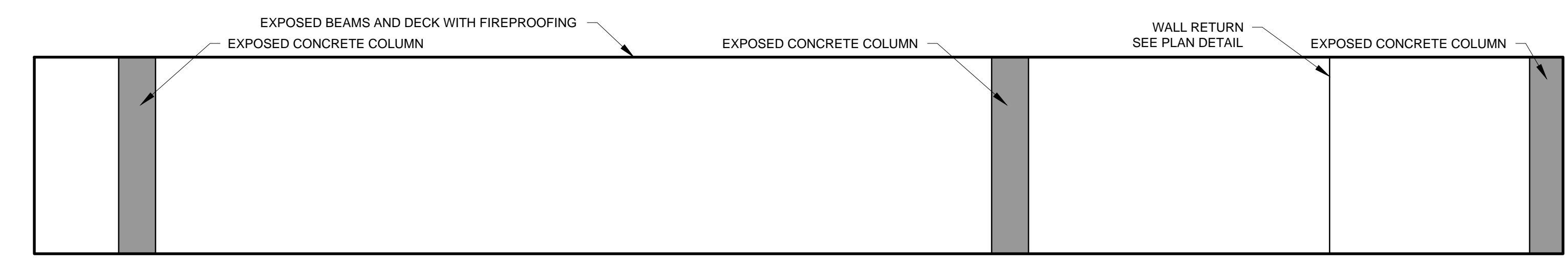
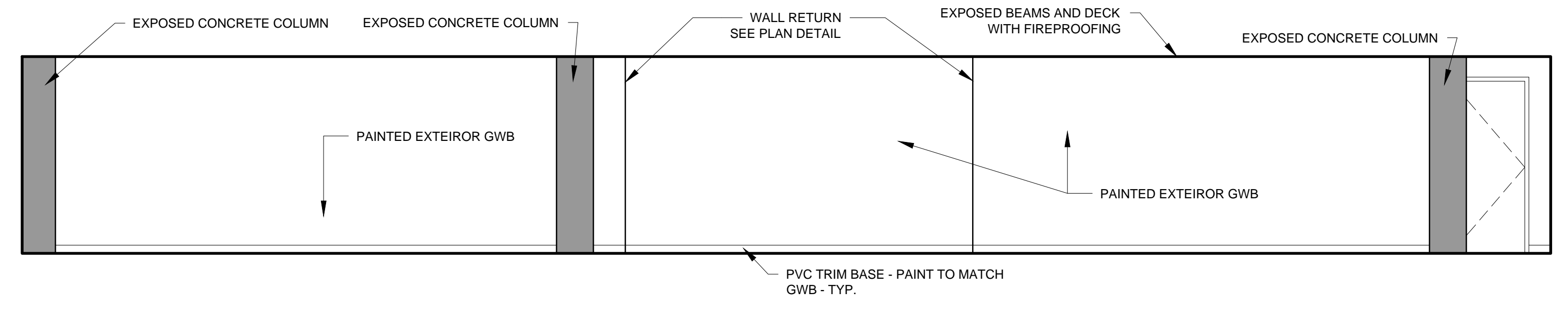


1 INTERIOR ELEVATIONS AT BASEMENT GARAGE (A)  
1/4" = 1'-0"



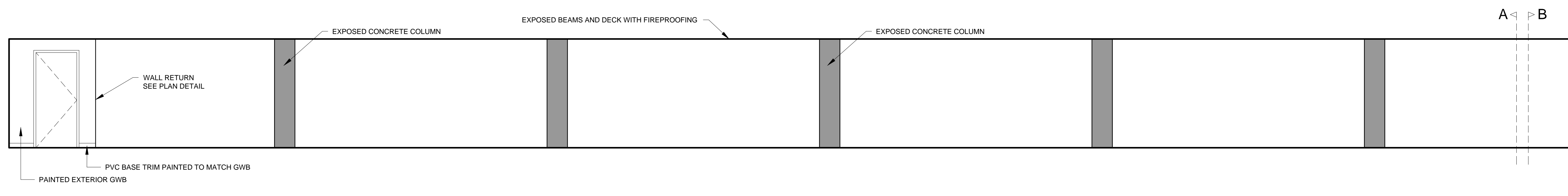
5 INTERIOR ELEVATIONS OF SMOKE CURTAIN AT ELEV. DOOR  
1/4" = 1'-0"

1 INTERIOR ELEVATIONS AT BASEMENT GARAGE (B)  
1/4" = 1'-0"

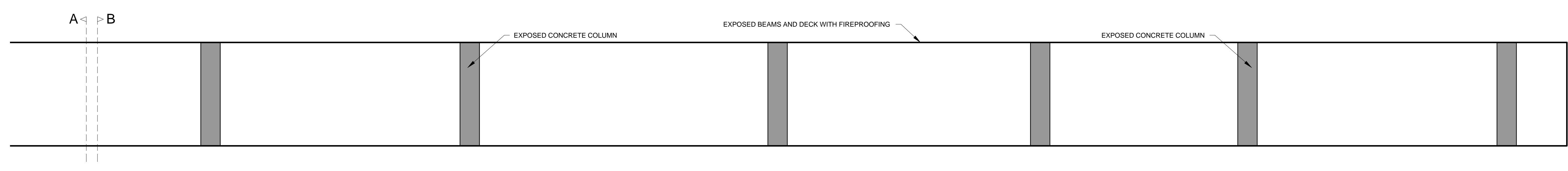


2 INTERIOR ELEVATIONS AT BASEMENT GARAGE  
1/4" = 1'-0"

4 INTERIOR ELEVATIONS AT BASEMENT GARAGE  
1/4" = 1'-0"



3 INTERIOR ELEVATIONS AT BASEMENT GARAGE (A)  
1/4" = 1'-0"



3 INTERIOR ELEVATIONS AT BASEMENT GARAGE (B)  
1/4" = 1'-0"