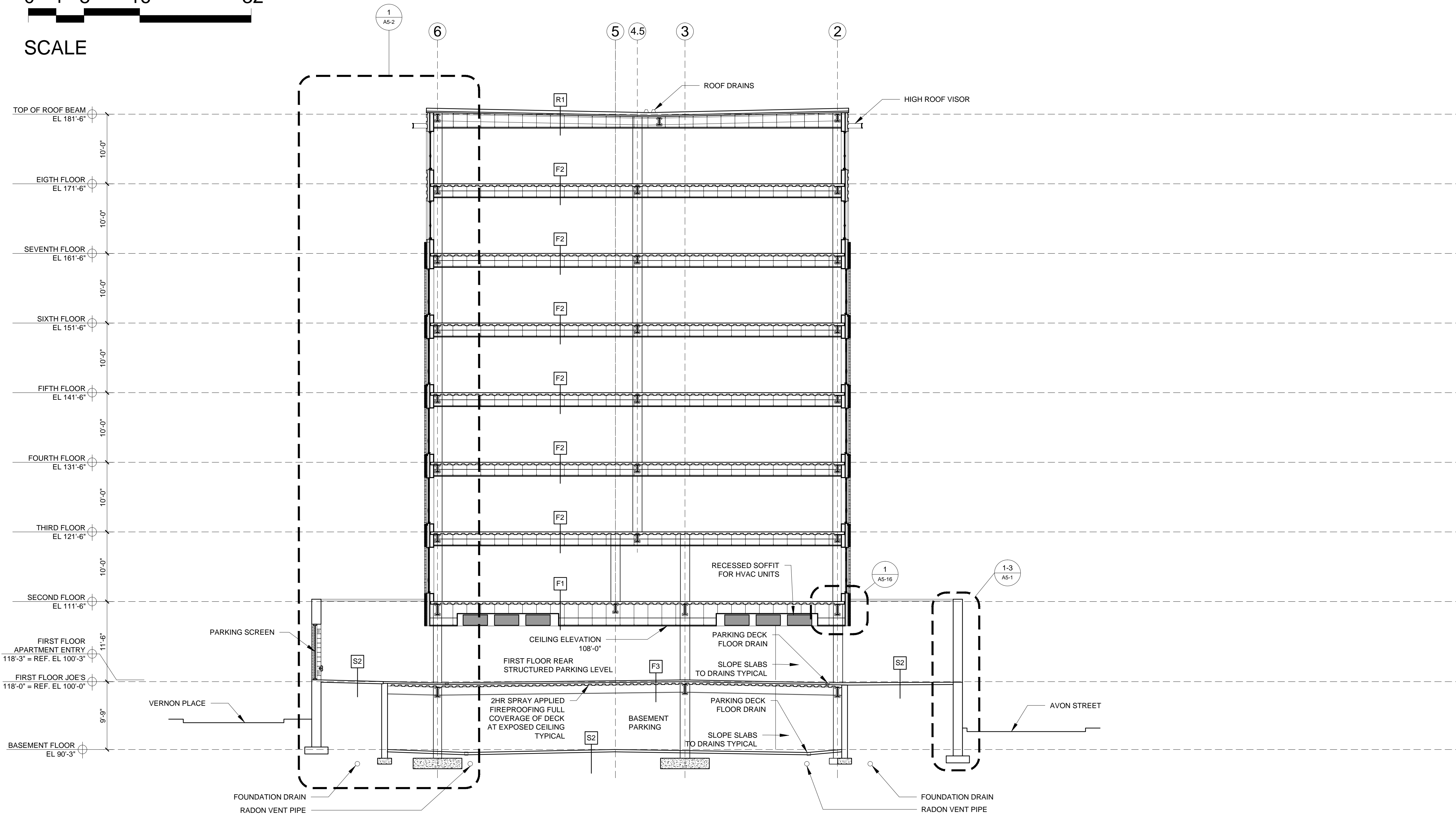
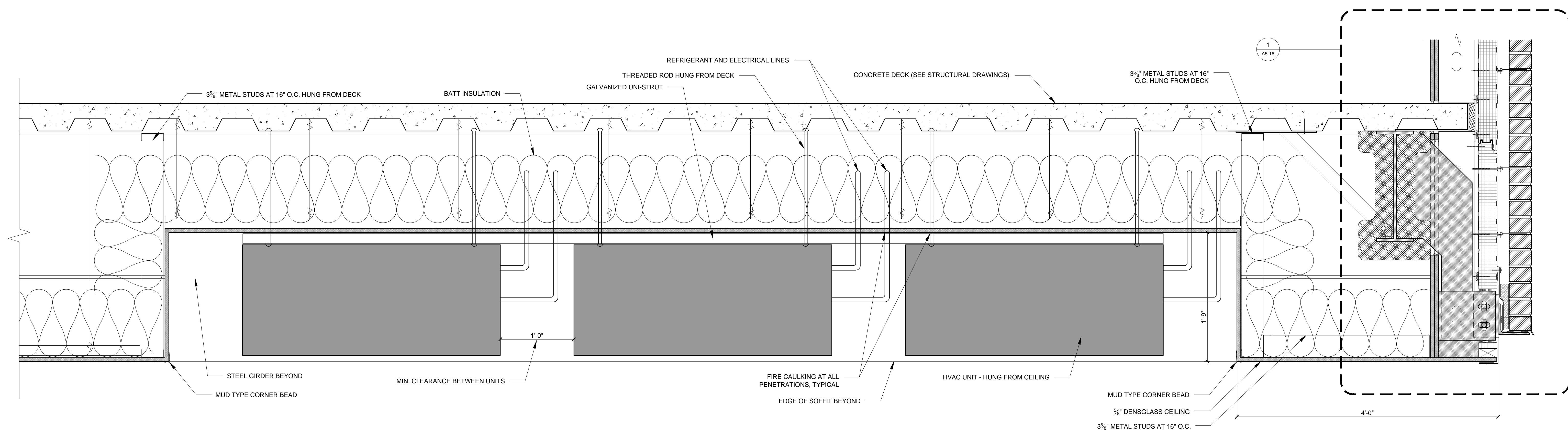


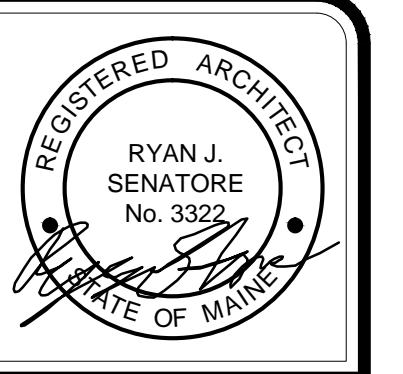
0 4' 8' 16' 32'  
SCALE



1 BUILDING SECTION  
1/8" = 1'-0"



2 RECESSED SOFFIT DETAIL AT GARAGE CEILING  
1/12" = 1'-0"



© 2015 RYAN SENATORE ARCHITECTURE

667 CONGRESS STREET  
APARTMENTS  
PORTLAND, MAINE



RYAN SENATORE ARCHITECTURE  
585 CONGRESS STREET  
PORTLAND, MAINE 04101  
207-650-8414  
rs@rsarchitecture.com

CONSULTANTS:  
STRUCTURAL: Structural Integrity  
77 Oak Street  
Portland, ME 04101  
207-774-8614

REVISIONS:

DATE: 2 NOVEMBER 2015  
PROJECT No. 1503  
DRAWN BY: RJS / RRT  
CHECKED BY: RJS  
SCALE: AS NOTED

SHEET TITLE:  
SECTION

A3-2