

© 2015 RYAN SENATORE ARCHITECTURE

667 CONGRESS STREET
APARTMENTS
PORTLAND, MAINE



RYAN SENATORE
ARCHITECTURE
666 CONGRESS STREET
PORTLAND, MAINE 04101
207-650-6414
senatorearchitecture.com

CONSULTANTS:
STRUCTURAL:
Structural Integrity
17 Oak Street
Portland, ME 04101
207-774-4614

REVISIONS:

DATE: 2 NOVEMBER 2015

PROJECT No.

DRAWN BY: RJS / RRT

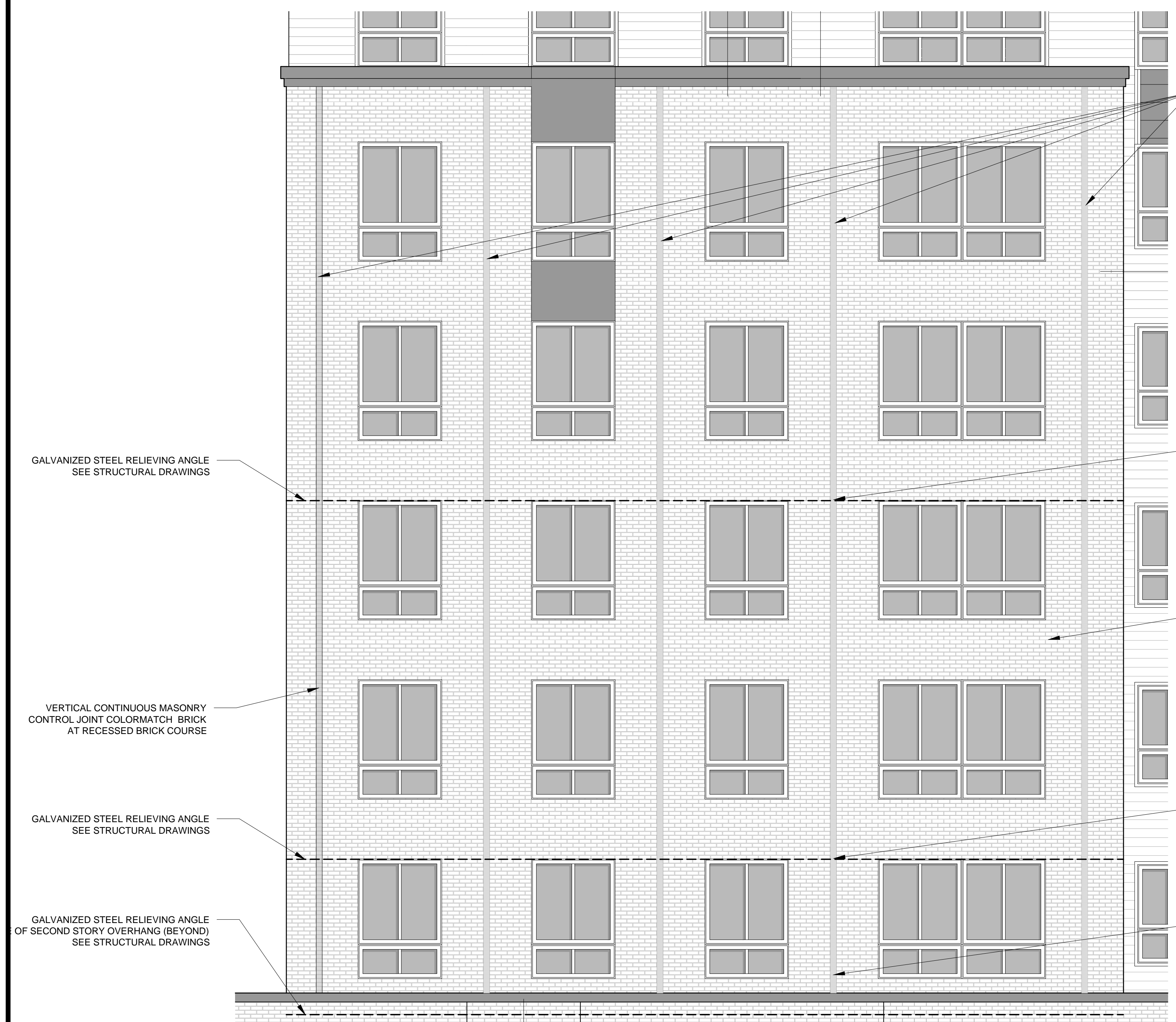
CHECKED BY: RJS

SCALE: AS NOTED

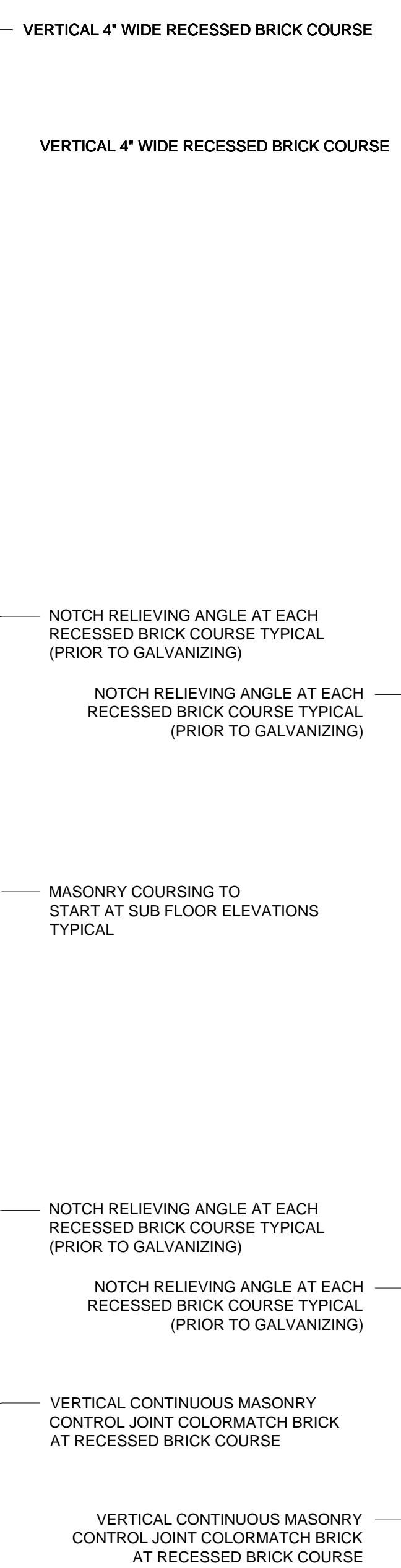
SHEET TITLE:

ENLARGED
MASONRY
ELEVATIONS

A2-9



1 ENLARGED MASONRY WEST ELEVATION
1/4" = 1'-0"



2 ENLARGED MASONRY EAST ELEVATION
1/4" = 1'-0"

