

© 2015 RYAN SENATORE ARCHITECTURE

667 CONGRESS STREET  
APARTMENTS  
PORTLAND, MAINE



RYAN SENATORE  
ARCHITECTURE  
665 CONGRESS STREET  
PORTLAND, MAINE 04101  
207-650-6414  
senatorearchitecture.com

CONSULTANTS:  
STRUCTURAL  
Structural Integrity  
77 Oak Street  
Portland, ME 04101  
207-774-8614

REVISIONS:

DATE: 10/21/15  
2 NOVEMBER 2015

PROJECT No.

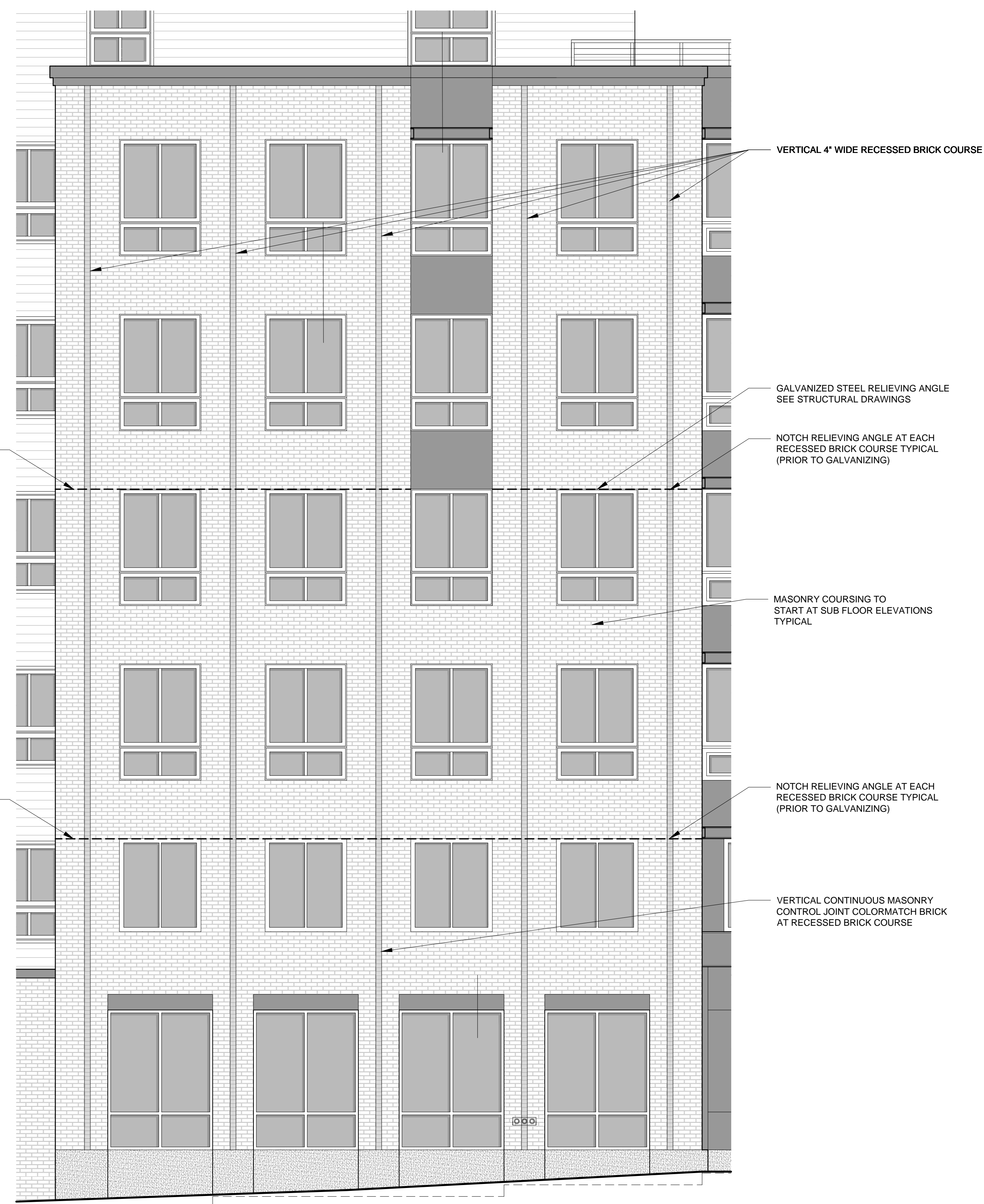
DRAWN BY: RJS / RRT

CHECKED BY: RJS

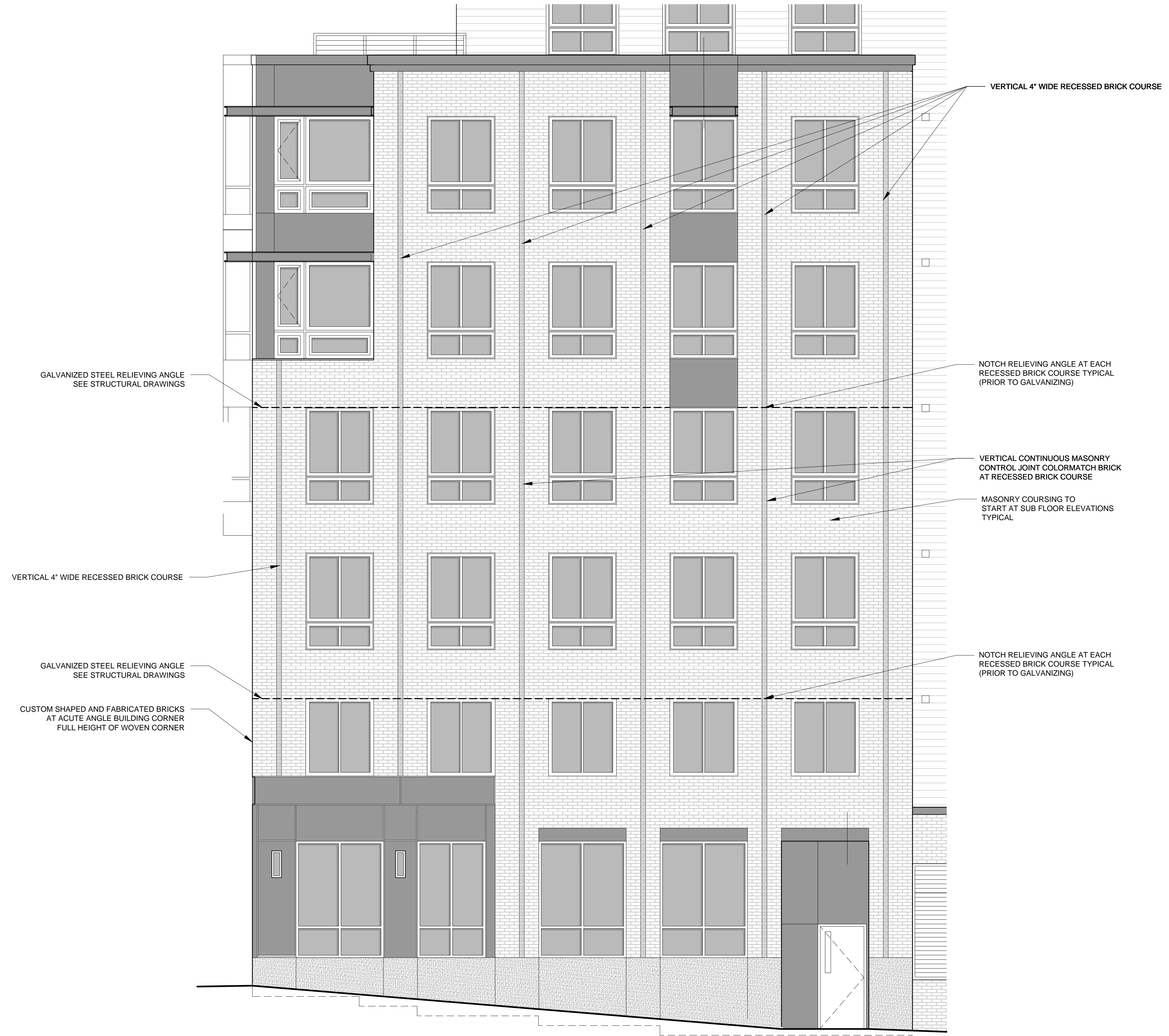
SCALE: AS NOTED

SHEET TITLE:  
ENLARGED  
MASONRY  
ELEVATIONS

A2-7



1 ENLARGED MASONRY WEST ELEVATION  
1/4" = 1'-0"



2 ENLARGED MASONRY EAST ELEVATION  
1/4" = 1'-0"