

© 2015 RYAN SENATORE ARCHITECTURE

667 CONGRESS STREET
APARTMENTS
PORTLAND, MAINE



RYAN SENATORE ARCHITECTURE
565 CONGRESS STREET
PORTLAND, MAINE 04101
207-650-6414
senatorearchitecture.com

CONSULTANTS:
STRUCTURAL: Structural Integrity
77 Oak Street
Portland, ME 04101
207-774-4614

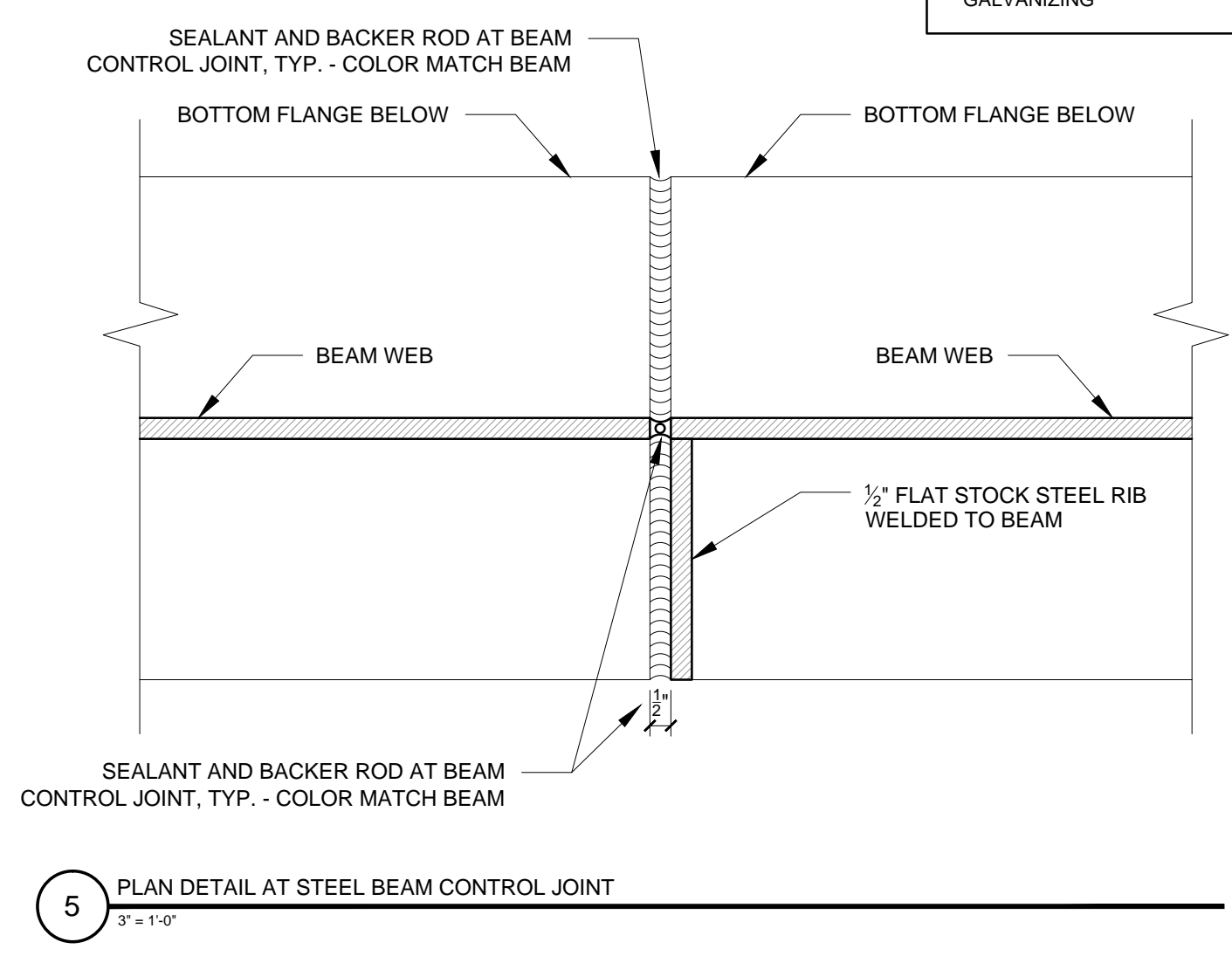
REVISIONS:

DATE: 2 NOVEMBER 2015
PROJECT No.
DRAWN BY: RJS / RRT
CHECKED BY: RJS
SCALE: AS NOTED

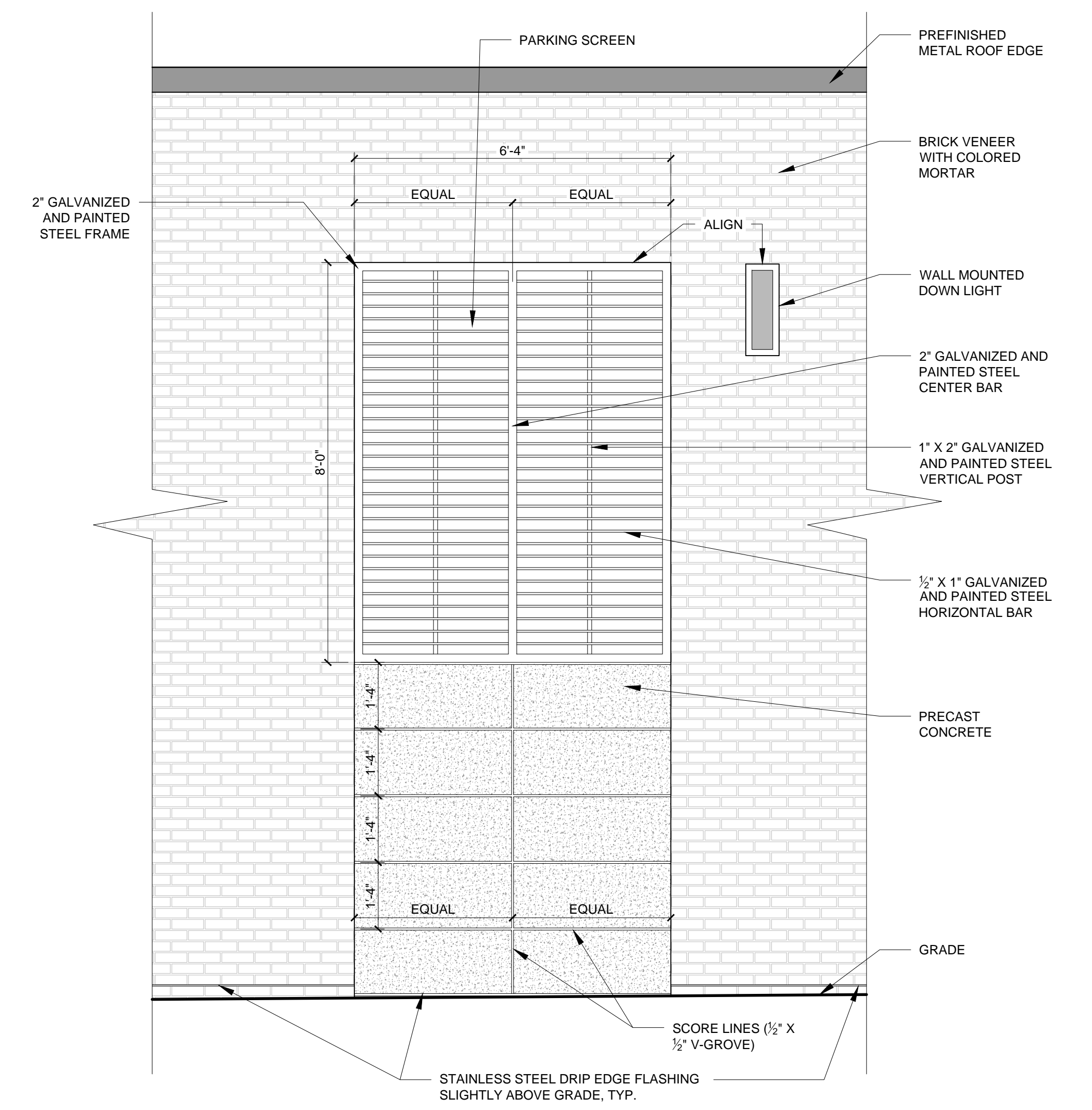
SHEET TITLE:
ENLARGED ELEVATION

A2-4

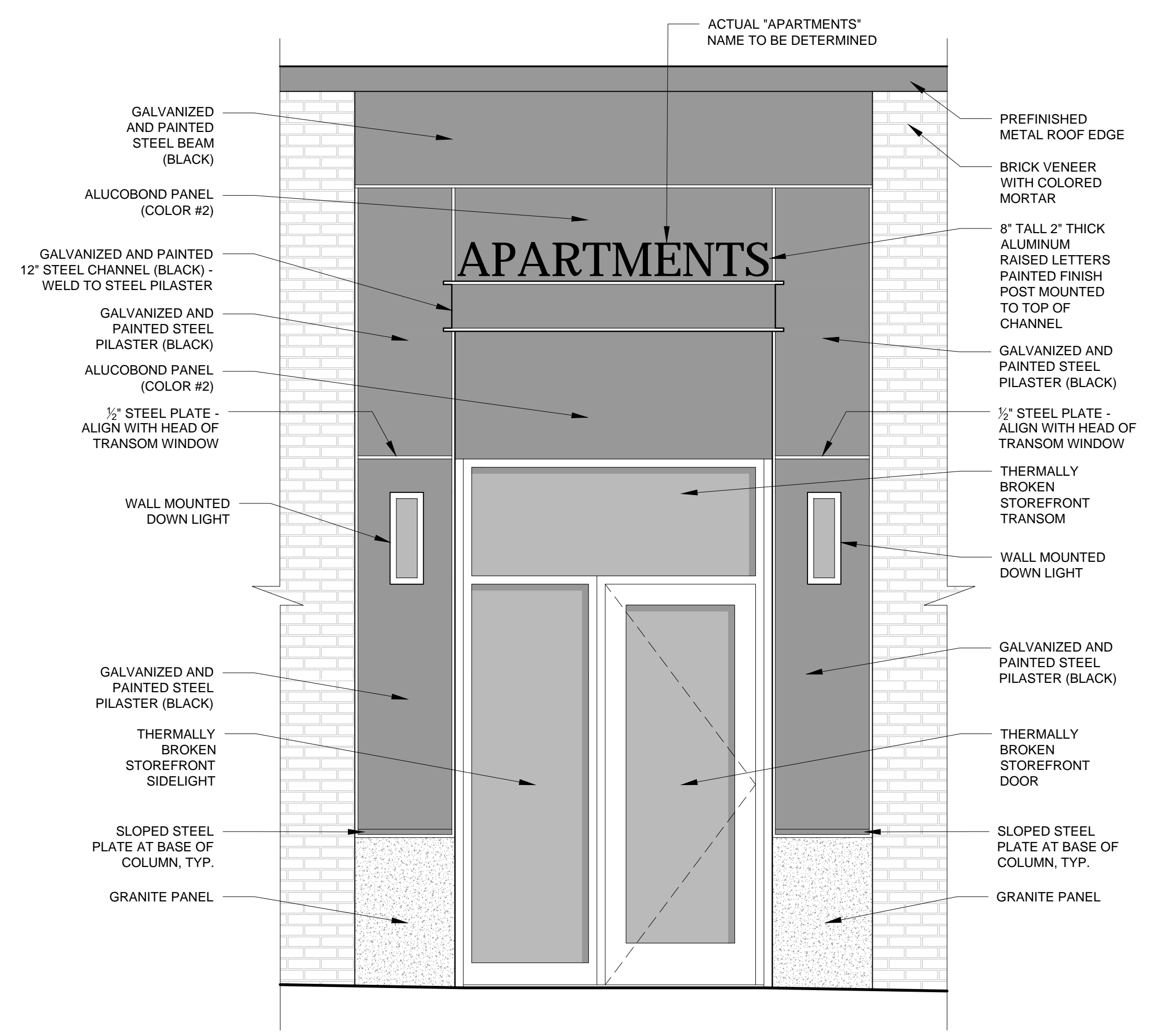
- EXPOSED STEEL NOTES
- 1) ALL WELDS TO BE GROUND SMOOTH
 - 2) REMOVE ALL "MILLMARKS" FROM STEEL PRIOR TO GALVANIZING
 - 3) CUT ALL HOLES IN STEEL FOR WIRING, BOXES ETC. PRIOR TO GALVANIZING



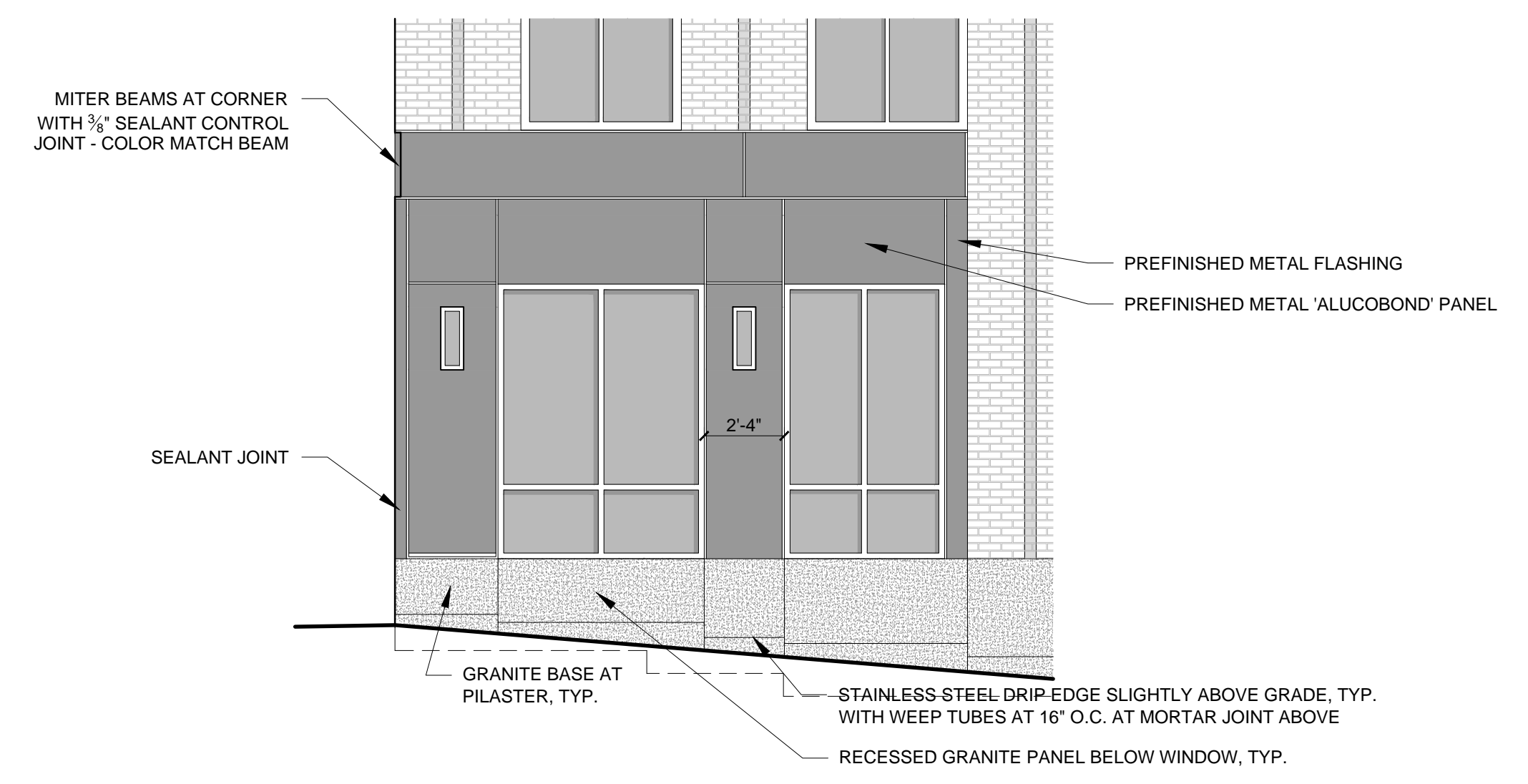
5 PLAN DETAIL AT STEEL BEAM CONTROL JOINT
3/8" = 1'-0"



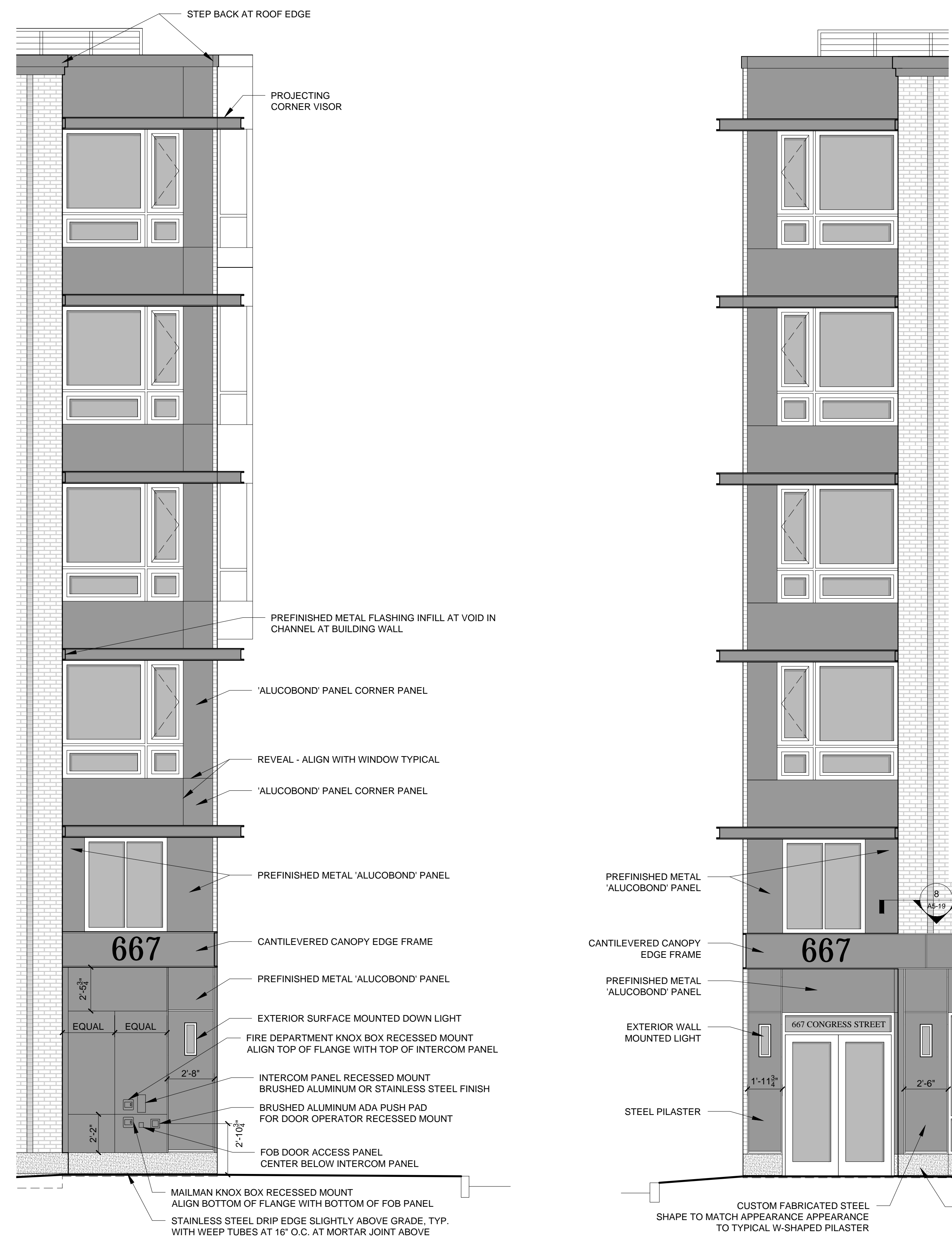
4 ENLARGED ELEVATION AT PARKING SCREEN
1/2" = 1'-0"



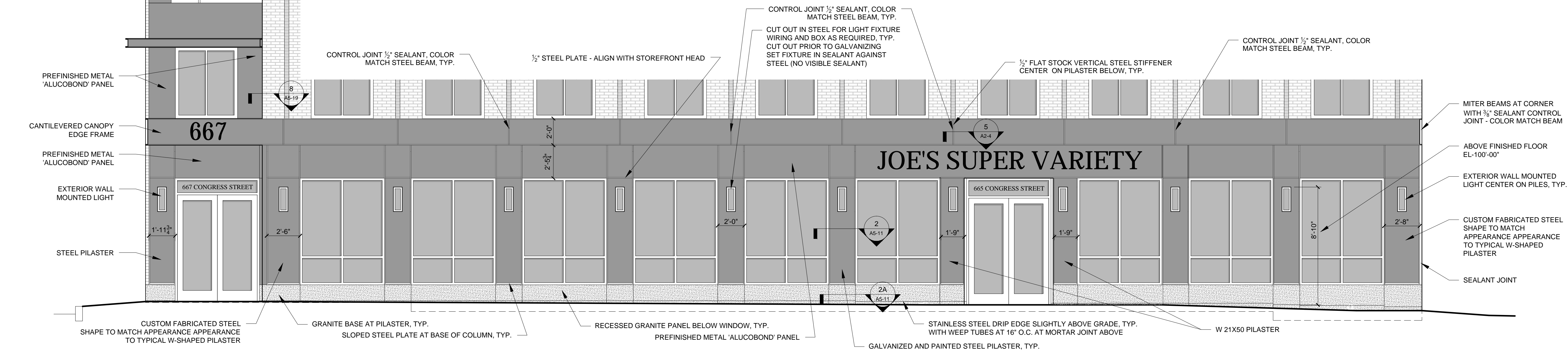
6 ENLARGED ELEVATION AT APARTMENT SIDE ENTRY ON VERNON STREET
1/2" = 1'-0"



3 ENLARGED ELEVATION AT CORNER OF CONGRESS STREET AND AVON STREET
1/4" = 1'-0"



2 ENLARGED ELEVATION AT CORNER OF VERON AND CONGRESS STREET
1/4" = 1'-0"



1 ENLARGED ELEVATION AT CONGRESS STREET
1/4" = 1'-0"