

© 2015 RYAN SENATORE ARCHITECTURE

667 CONGRESS STREET  
APARTMENTS  
PORTLAND, MAINE



RYAN SENATORE ARCHITECTURE  
565 CONGRESS STREET  
PORTLAND, MAINE 04101  
207-650-6414  
senatorearchitecture.com

CONSULTANTS:  
STRUCTURAL:  
Structural Integrity  
77 Oak Street  
Portland, ME 04101  
207-774-8614

REVISIONS:

DATE: 2 NOVEMBER 2015  
PROJECT No. 1505  
DRAWN BY: RJS / RRT  
CHECKED BY: RJS  
SCALE: AS NOTED

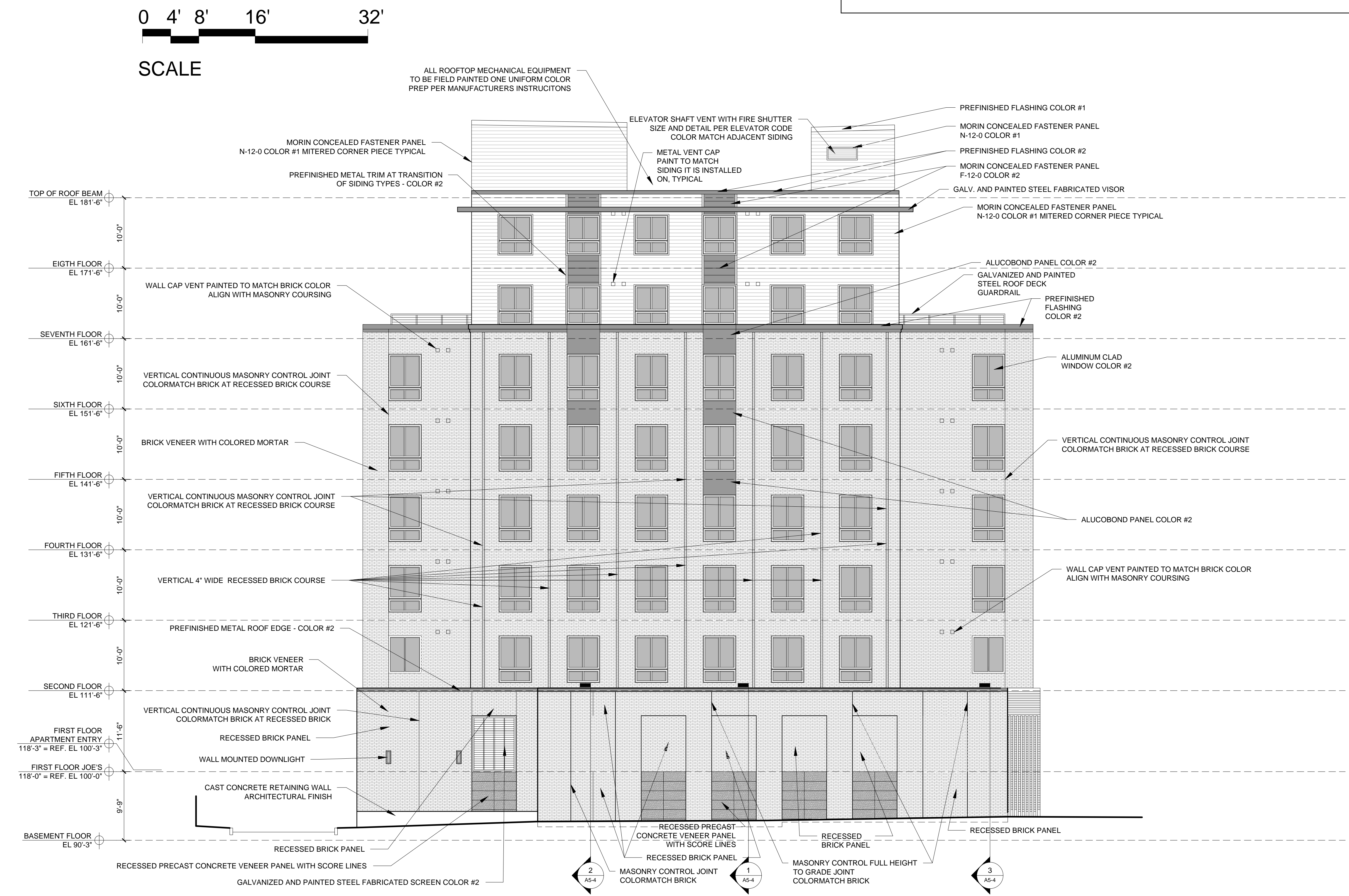
SHEET TITLE:  
NORTH ELEVATION

A2-3

MATERIALS KEY		
ITEM	INFORMATION	COLOR
MORIN N-12-0 CONCEALED FASTENER PANEL COLOR #1	20 GAUGE (NO INTERMEDIARY FLUTE) (CONCEALED FASTENERS)	ZINC GRAY
MORIN F-12-0 CONCEALED FASTENER PANEL COLOR #2	18 GAUGE (NO INTERMEDIARY FLUTE) (CONCEALED FASTENERS)	BLACK
GALVANIZED AND PAINTED STEEL VISOR		BLACK
GALVANIZED AND PAINTED FABRICATED STEEL (FIRST FLOOR)		BLACK
ALUCOBOND PANEL COLOR #2		BLACK
PREFINISHED FLASHING COLOR #2		BLACK
PREFINISHED METAL TRIM AROUND WINDOWS COLOR #2		BLACK
BRICK VENEER	MORIN ACADEMY SMOOTH NARROW FLASHED RANGE	RED
BRICK MORTAR		GRAY
GRANITE VENEER	CHAMPLAIN GRAY - THERMAL FINISH	
PRECAST CONCRETE VENEER	MGA CAST STONE	PEWTER

**MATERIALS NOTE:**

1.) ALL DIS-SIMILAR METALS TO BE ISOLATED FROM ONE ANOTHER WITH ADHERED STRIPS OR SEALANTS TO PREVENT GALVANIC ACTION



1 NORTH ELEVATION  
1/8" = 1'-0"