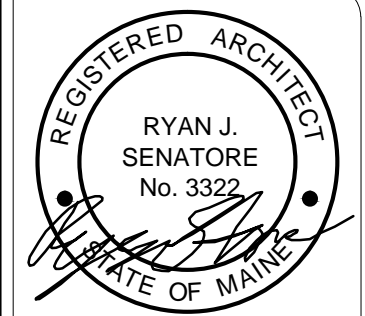
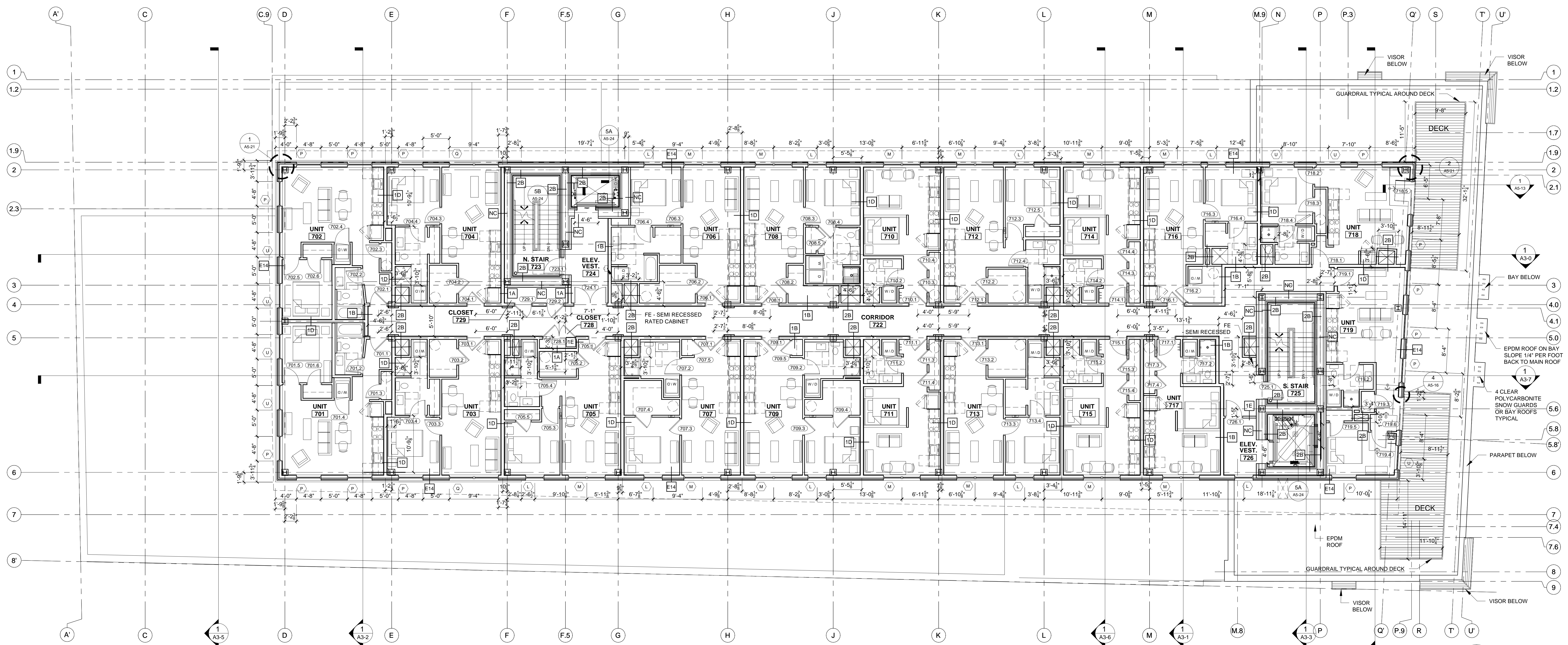


PLAN NOTES

- 1.) ALL STEEL COLUMNS TO BE FIREPROOFED TO MEET 2HR UL RATING AS SHOWN ON TYPICAL COLUMN FIREPROOFING ON SHEET A0-1
- 2.) ALL STEEL BEAMS AND DIAGONAL STEEL BEAMS AT STAIR/ELEVATOR TOWERS TO BE FIREPROOFED TO MEET 2HR UL RATING AS SHOWN ON TYPICAL BEAM FIREPROOFING ON SHEET A0-1 (UNLESS NOTED OTHERWISE)



© 2015 RYAN SENATORE ARCHITECTURE



667 CONGRESS STREET  
APARTMENTS  
PORTLAND, MAINE



RYAN SENATORE  
ARCHITECTURE  
165 CONGRESS STREET  
PORTLAND, MAINE 04101  
207-650-6414  
senatorearchitecture.com

CONSULTANTS:  
STRUCTURAL  
Structural Integrity  
77 Oak Street  
Portland, ME 04101  
207-774-4614

REVISIONS:

DATE: 2 NOVEMBER 2015  
PROJECT No. 1503  
DRAWN BY: RJS / RRT  
CHECKED BY: RJS  
SCALE: AS NOTED

SHEET TITLE:  
SEVENTH FLOOR PLAN

A1-7

1 SEVENTH FLOOR PLAN  
1/8" = 1'-0"