

© 2015 RYAN SENATORE ARCHITECTURE

667 CONGRESS STREET
APARTMENTS
PORTLAND, MAINE



RYAN SENATORE
ARCHITECTURE
666 CONGRESS STREET
PORTLAND, MAINE 04101
207-650-6414
senatorearchitecture.com

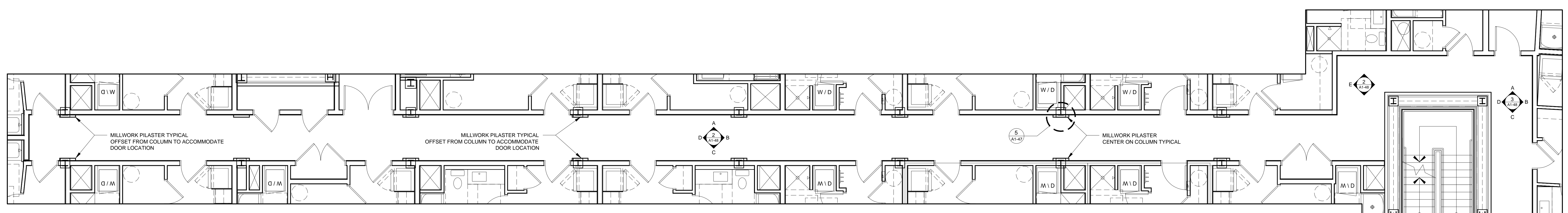
CONSULTANTS:
STRUCTURAL:
Structural Integrity
27 Oak Street
Portland, ME 04101
207-774-4614

REVISIONS:

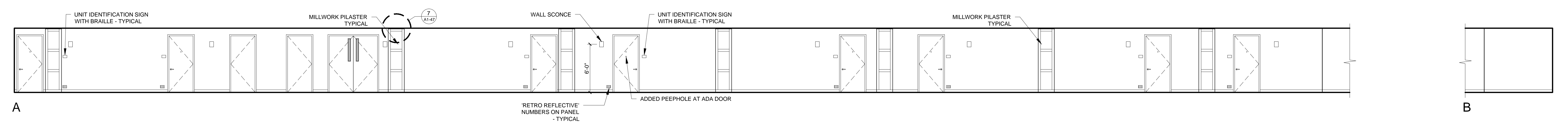
DATE: 2 NOVEMBER 2015
PROJECT No.
DRAWN BY: RJS / RRT
1603
CHECKED BY: RJS
SCALE: AS NOTED

SHEET TITLE:
3RD - 6TH FLOOR
CORRIDOR PLAN
AND INTERIOR
ELEVATIONS

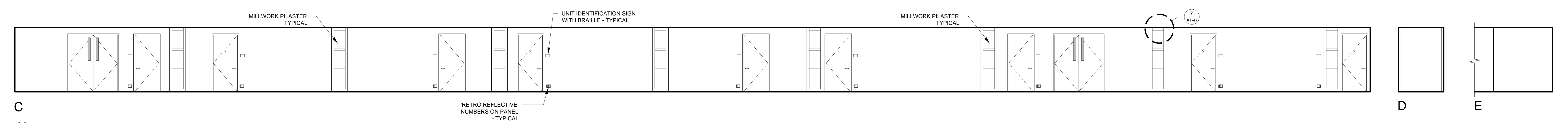
A1-48



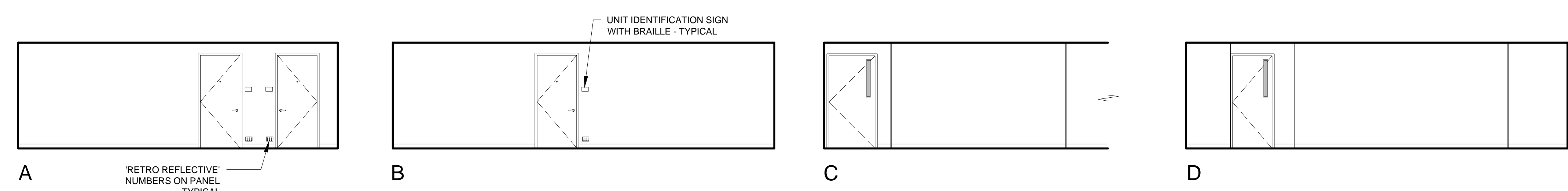
1 3RD - 6TH CORRIDOR PLAN
3/16" = 1'-0"



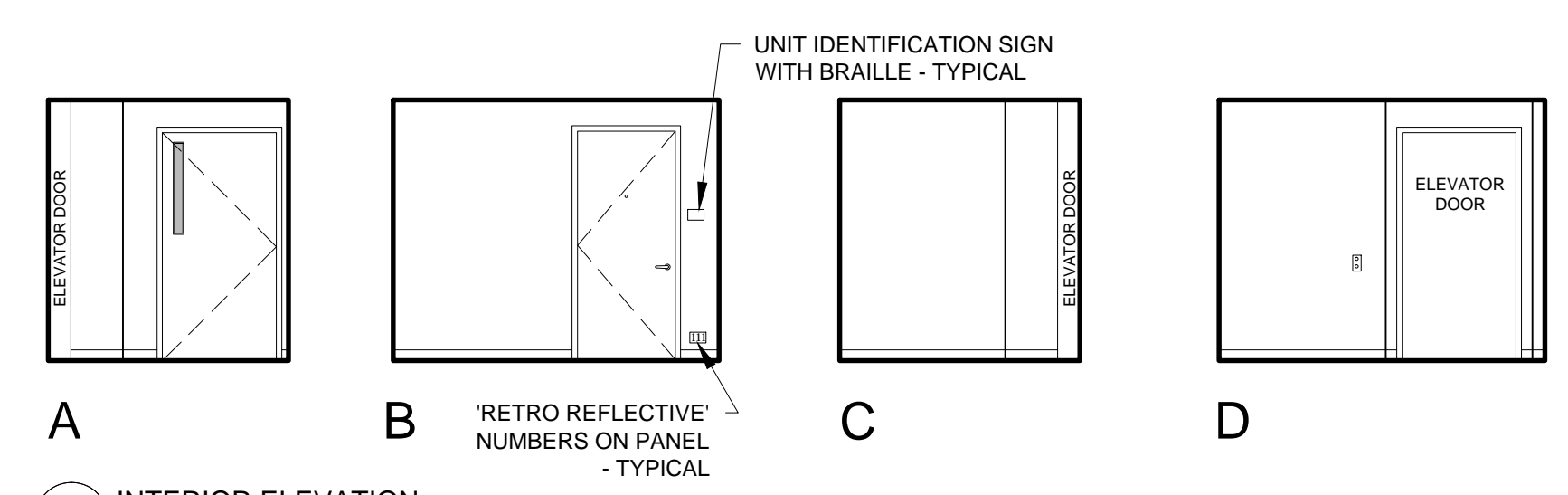
A 2 INTERIOR ELEVATION
3/16" = 1'-0"



C 2 INTERIOR ELEVATION
3/16" = 1'-0"



A 3 INTERIOR ELEVATION
3/16" = 1'-0"



A 4 INTERIOR ELEVATION
3/16" = 1'-0"

LIGHTING SHOWN FOR REFERENCE ONLY
SEE ELECTRICAL PLANS FOR LIGHTING LAYOUT