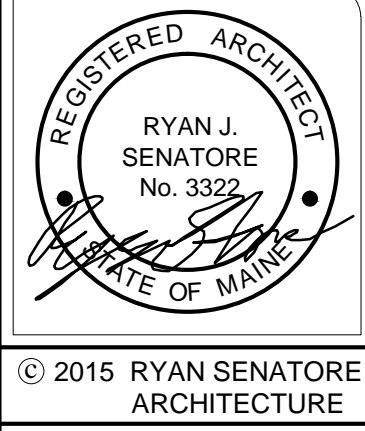


PLAN NOTES

- 1.) ALL STEEL COLUMNS TO BE FIREPROOFED TO MEET 2HR UL RATING AS SHOWN ON TYPICAL COLUMN FIREPROOFING ON SHEET A0-1
- 2.) ALL STEEL BEAMS AND DIAGONAL STEEL BEAMS AT STAIR/ELEVATOR TOWERS TO BE FIREPROOFED TO MEET 2HR UL RATING AS SHOWN ON TYPICAL BEAM FIREPROOFING ON SHEET A0-1 (UNLESS NOTED OTHERWISE)



© 2015 RYAN SENATORE ARCHITECTURE

667 CONGRESS STREET
APARTMENTS
PORTLAND, MAINE



RYAN SENATORE ARCHITECTURE
665 CONGRESS STREET
PORTLAND, MAINE 04101
207-650-6414
senatorearchitecture.com

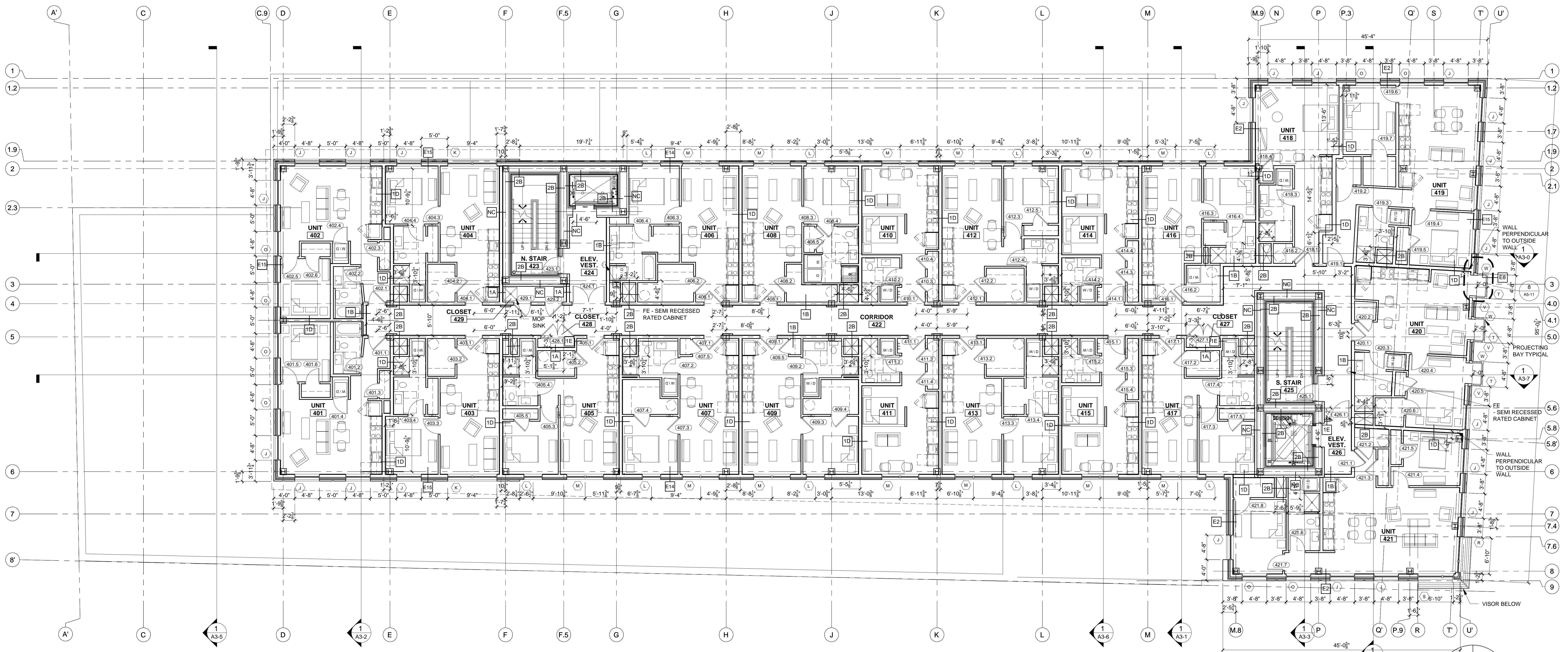
CONSULTANTS:
STRUCTURAL: Structural Integrity
77 Oak Street
Portland, ME 04101
207-774-4614

REVISIONS:

DATE: 2 NOVEMBER 2016
PROJECT No.: 1503
DRAWN BY: RJS / RRT
CHECKED BY: RJS
SCALE: AS NOTED

SHEET TITLE:
FOURTH FLOOR PLAN

A1-4



1 FOURTH FLOOR PLAN
1/8" = 1'-0"