

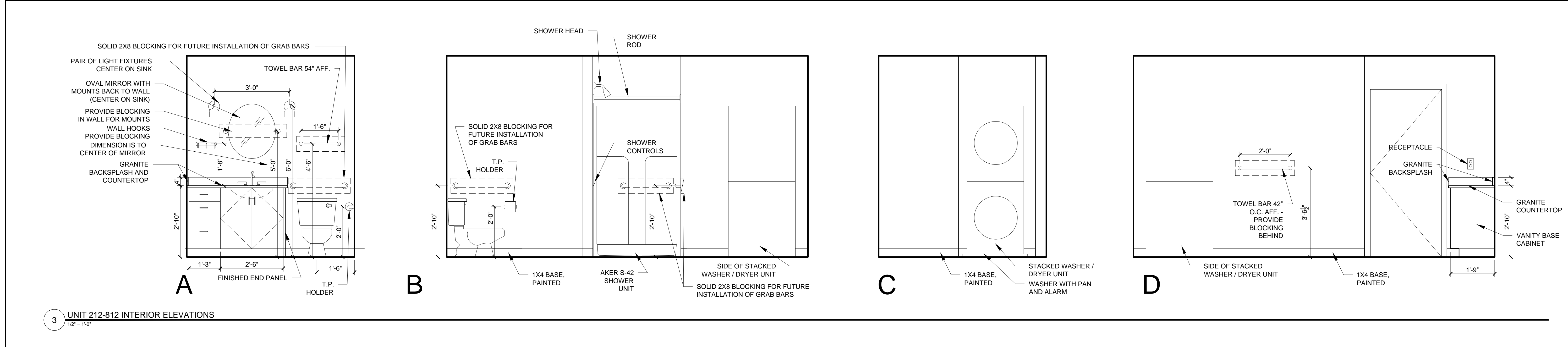
- REFLECTED CEILING PLAN NOTES**
- 1.) G.C. TO COORDINATE LOCATIONS OF PLUMBING CLEAN OUTS WITH ACCESS PANELS AS SHOWN ON REFLECTED CEILING PLANS
 - 2.) G.C. TO PROVIDE ACCESS PANELS AS REQUIRED FOR ALL ELEMENTS (SPRINKLER, VALVES, ETC) NOT SHOWN ON THIS REFLECTED CEILING PLAN)
 - 3.) G.C. TO PROVIDE METAL FRAMING AND BLOCKING REQUIRED FOR ALL ACCESS PANELS AND CONTROL JOINTS
 - 4.) ALL ACCESS PANELS TO BE FIRE RATED TO MATCH THE CEILING THEY ARE INSTALLED WITHIN

- UNIT NOTES**
- 1.) CEILING HEIGHTS, WINDOW HEAD AND SILL HEIGHTS VARY FROM FLOOR TO FLOOR, INTERIOR ELEVATIONS GRAPHICALLY DEPICT ONE FLOOR ONLY, FOR HEIGHT INFORMATION REFER TO BUILDING SECTIONS AND WALL SECTIONS
 - 2.) G.C. TO CONFIRM AND COORDINATE ALL ROUGH FRAMING DIMENSIONS FOR TUBS, SHOWERS, BUILT-IN FIXTURES ETC. G.C. TO CONFIRM AND COORDINATE ALL CABINETS AND APPLIANCE DIMENSIONS
 - 3.) PROVIDE APPROPRIATE FIRE TREATED BLOCKING IN WALLS BEHIND ALL FIXTURES, PARTITIONS AND ACCESSORIES. G.C. TO CONFIRM AND COORDINATE ALL CABINETS AND APPLIANCE DIMENSIONS
 - 4.) PROVIDE APPROPRIATE FIRE TREATED BLOCKING IN WALLS BEHIND ALL FIXTURES, PARTITIONS AND ACCESSORIES. G.C. TO CONFIRM AND COORDINATE ALL CABINETS AND APPLIANCE DIMENSIONS
 - 5.) SET ALL CLOTHES WASHERS IN PANS WITH WATER SENSOR
 - 6.) REFER TO ELECTRICAL AND MECHANICAL DRAWINGS FOR ADDITIONAL INFORMATION REGARDING LIGHTING, DIFFUSERS, ETC.
 - 7.) PROVIDE FIRE EXTINGUISHER ON BRACKET IN BASE CABINET BELOW KITCHEN SINK - TYPICAL
 - 8.) HANG HOT WATER HEATER FROM DECK ABOVE. (SEE DETAIL ON TYPICAL UNIT DETAILS SHEET)
 - 9.) WHERE DROPPED SOFFITS AND CEILINGS ARE SHOWN, THESE ARE IN ADDITION TO THE FIRE RATED GWB CEILING ABOVE WHICH IS PART OF THE RATED ASSEMBLY
 - 10.) WHERE PLUMBING VALVES (TUB, SHOWER, ETC) ARE LOCATED IN FIRE RATED WALLS, PROVIDE FIRE RATED BOX IN WALL FOR VALVE TO BE INSTALLED WITHIN

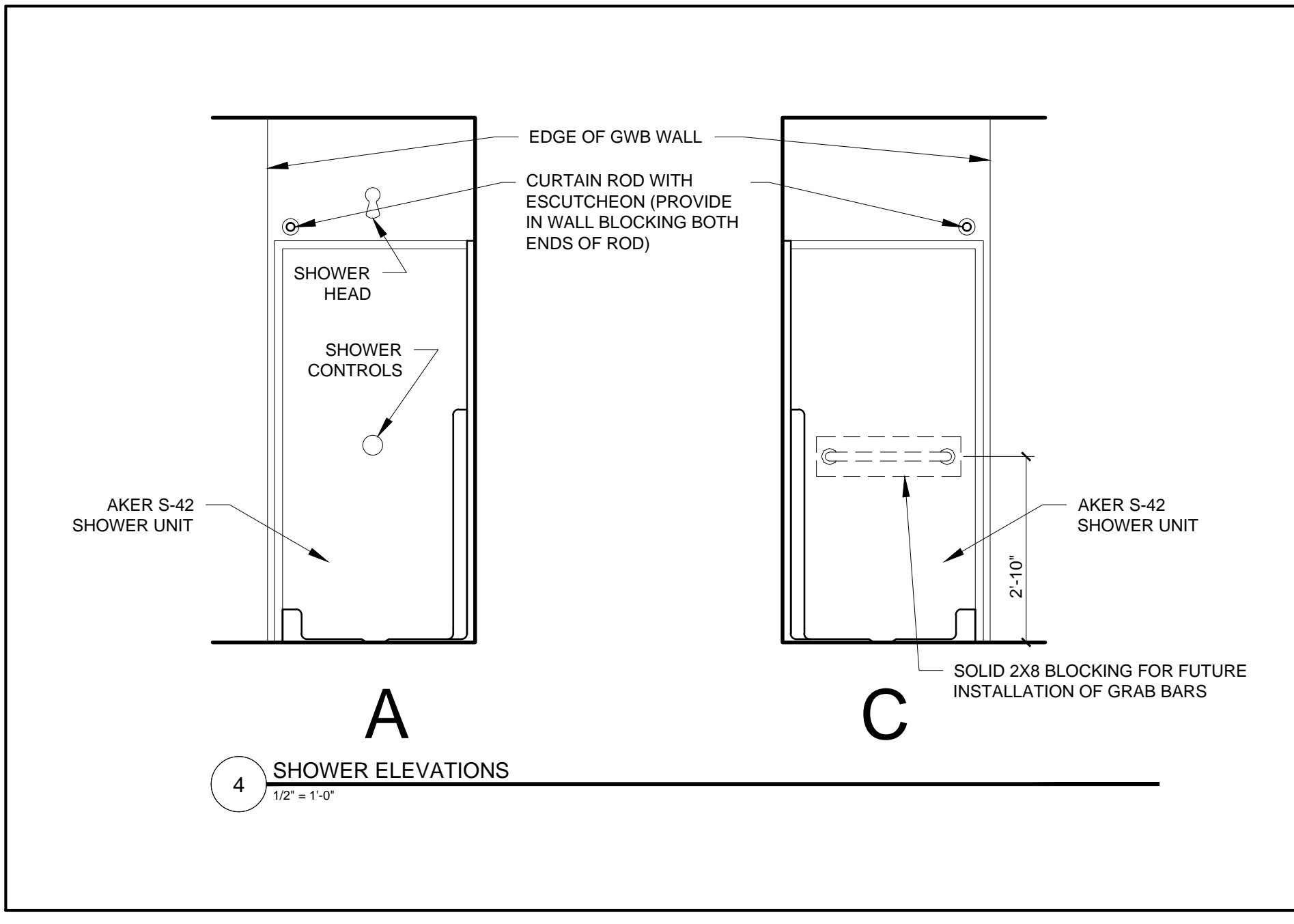
- CABINETS AND APPLIANCE ABBREVIATIONS**
- DB = DRAWER BASE
 - DRB = DOOR BASE
 - SB = SINK BASE
 - WC = WALL CABINET
 - WC(24) = WALL CABINET 24" DEEP
 - PU = PANTRY UNIT 24" DEEP
 - OS = OPEN SHELVES
 - RA = RANGE
 - DW = DISHWASHER
 - REF = REFRIGERATOR

REFLECTED CEILING PLAN AND LIGHTING LEGEND

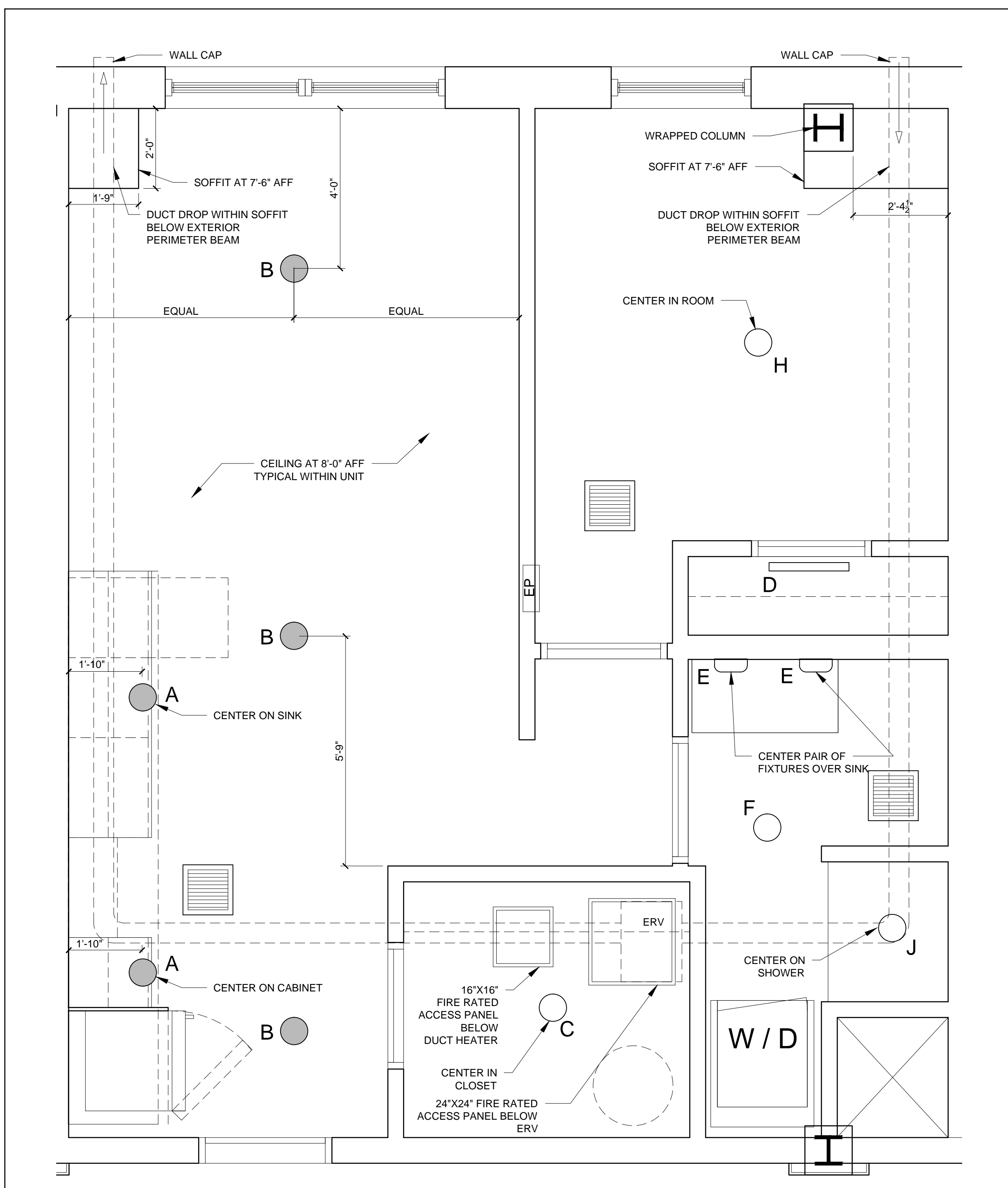
SYMBOL	SHG	DESCRIPTION
A	○	SURFACE MOUNT - TBD
B	○	SURFACE MOUNTED - TBD
C	○	SURFACE MOUNT - IN CLOSETS
D	○	SURFACE MOUNTED ON WALL ABOVE DOOR
E	○	WALL SCONCE IN BATHROOM OVER VANITY
F	○	SURFACE MOUNT - WET LOCATION
H	○	SURFACE MOUNT CENTER IN BEDROOMS
J	○	SURFACE MOUNT - WET LOCATION
K	○	EXTERIOR CUT OFF DOWN LIGHT
	■	CEILING GRILLE



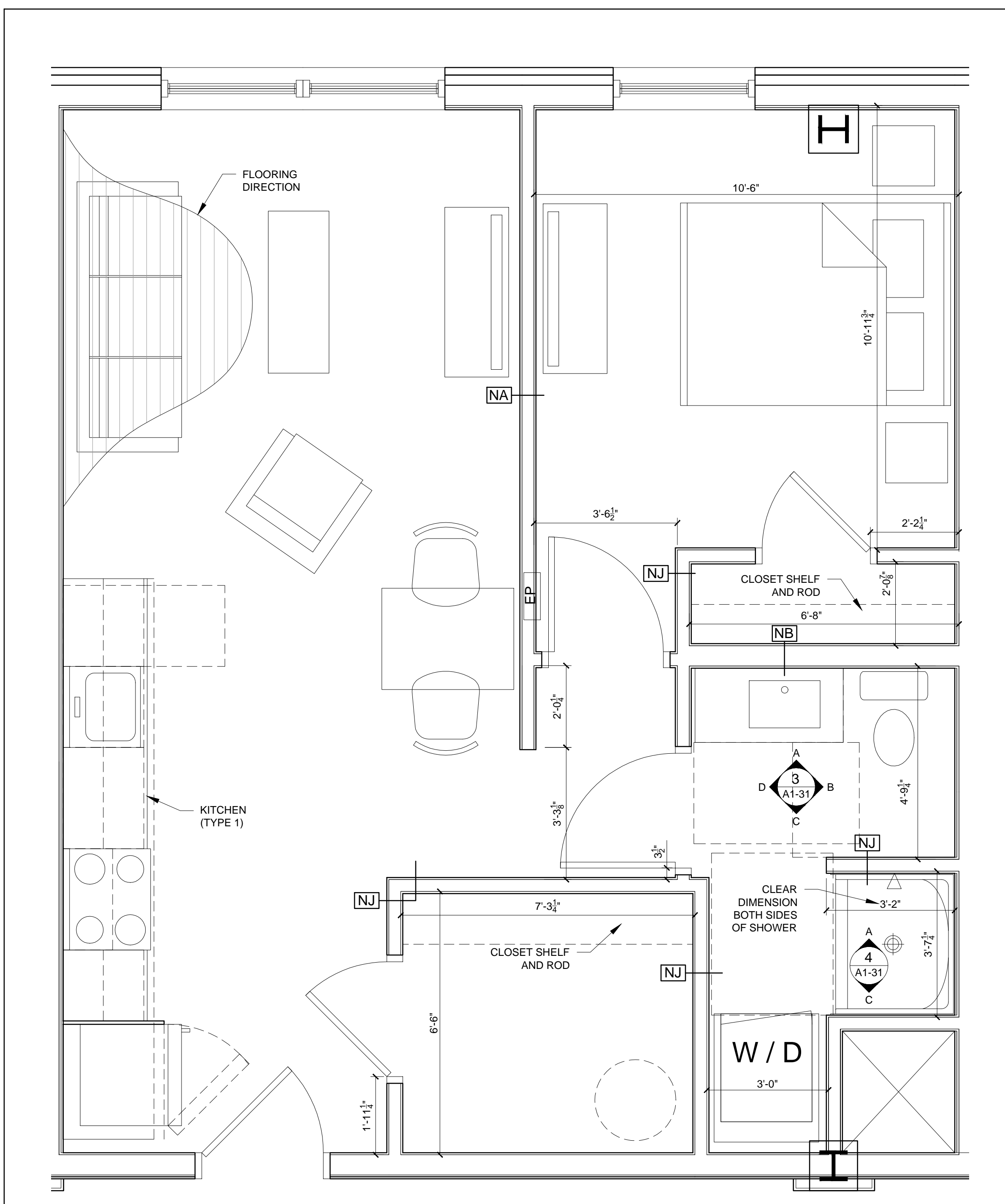
3 UNIT 212-812 INTERIOR ELEVATIONS
1/2" = 1'-0"



4 SHOWER ELEVATIONS
1/2" = 1'-0"



2 UNIT 212-812 REFLECTED CEILING PLAN
1/2" = 1'-0"



1 UNIT 212-812 FLOOR PLAN
1/2" = 1'-0"



© 2015 RYAN SENATORE ARCHITECTURE

667 CONGRESS STREET
APARTMENTS
PORTLAND, MAINE



RYAN SENATORE ARCHITECTURE

565 CONGRESS STREET
PORTLAND, MAINE 04101
207-650-6414
senatorearchitecture.com

CONSULTANTS:
STRUCTURAL: Structural Integrity
77 Oak Street
Portland, ME 04101
207-774-4614

REVISIONS:

DATE: 2 NOVEMBER 2015
PROJECT NO.: 1503
DRAWN BY: RJS / RRT
CHECKED BY: RJS
SCALE: AS NOTED

SHEET TITLE:
UNIT 212-812
PLANS AND
INTERIOR
ELEVATIONS

A1-31