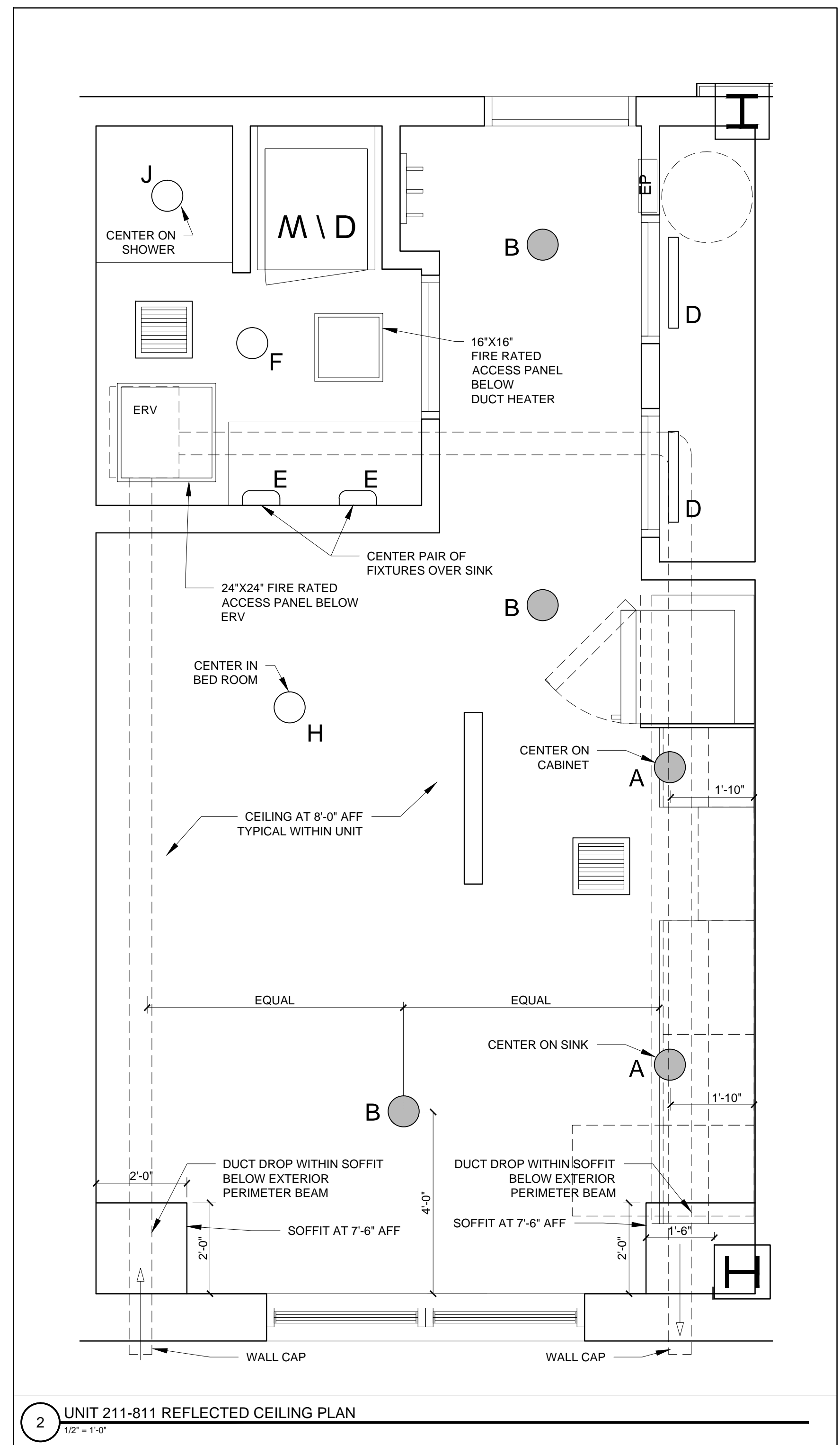
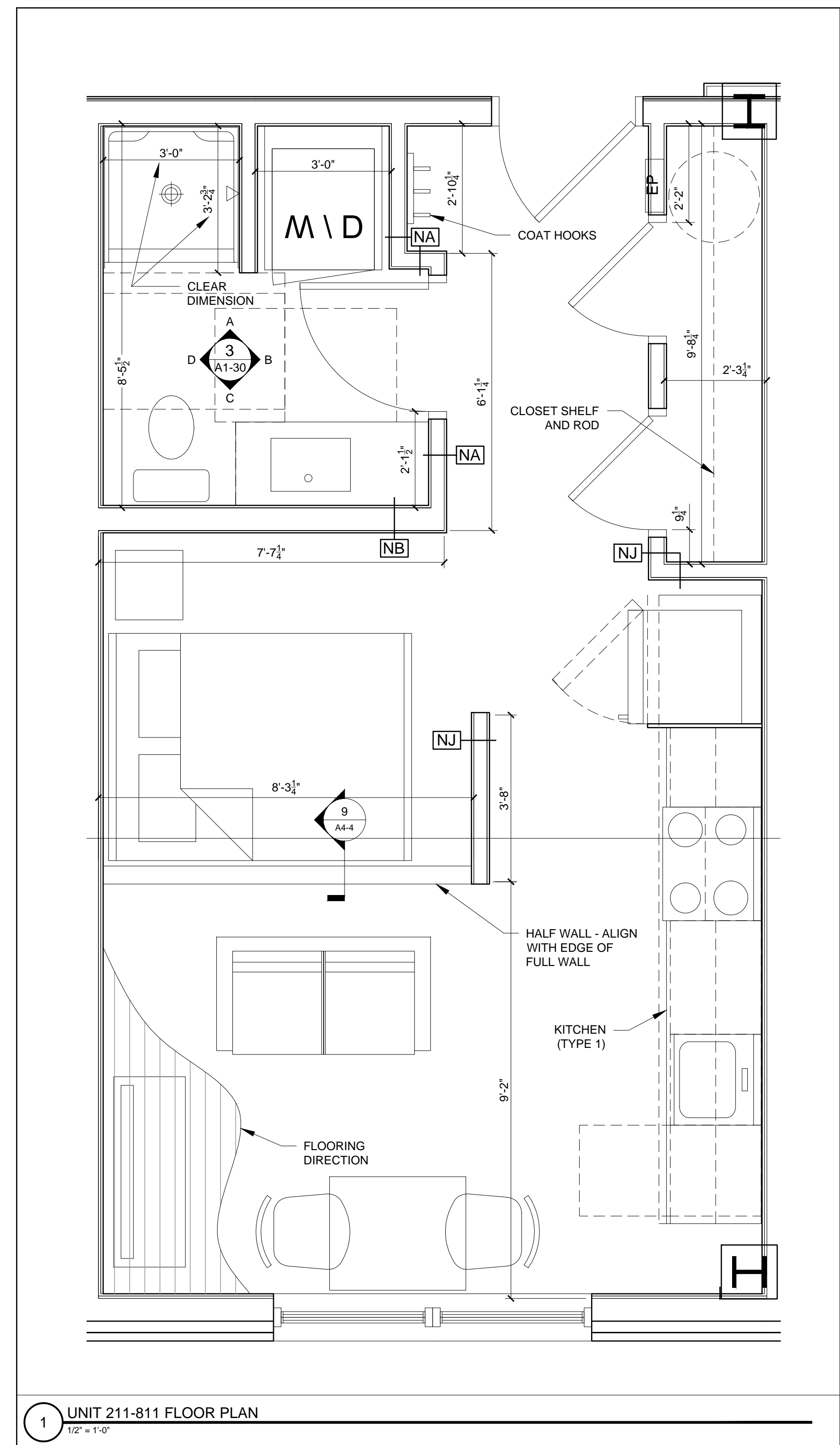


3 UNIT 211-811 INTERIOR ELEVATIONS  
 1/2" = 1'-0"



2 UNIT 211-811 REFLECTED CEILING PLAN  
 1/2" = 1'-0"



1 UNIT 211-811 FLOOR PLAN  
 1/2" = 1'-0"

- REFLECTED CEILING PLAN NOTES
- 1) G.C. TO COORDINATE LOCATIONS OF PLUMBING CLEAN OUTS WITH ACCESS PANELS AS SHOWN ON REFLECTED CEILING PLANS
  - 2) G.C. TO PROVIDE ACCESS PANELS AS REQUIRED FOR ALL ELEMENTS (SPRINKLER, VALVES, ETC) NOT SHOWN ON THIS REFLECTED CEILING PLAN
  - 3) G.C. TO PROVIDE METAL FRAMING AND BLOCKING REQUIRED FOR ALL ACCESS PANELS AND CONTROL JOINTS
  - 4) ALL ACCESS PANELS TO BE FIRE RATED TO MATCH THE CEILING THEY ARE INSTALLED WITHIN

- UNIT NOTES
- 1) CEILING HEIGHTS, WINDOW HEAD AND SILL HEIGHTS VARY FROM FLOOR TO FLOOR, INTERIOR ELEVATIONS GRAPHICALLY DEPICT ONE FLOOR ONLY, FOR HEIGHT INFORMATION REFER TO BUILDING SECTIONS AND WALL SECTIONS
  - 2) G.C. TO CONFIRM AND COORDINATE ALL ROUGH FRAMING DIMENSIONS FOR TUBS, SHOWERS, BUILT-IN FIXTURES ETC. G.C. TO CONFIRM AND COORDINATE ALL CABINETRY AND APPLIANCE DIMENSIONS
  - 3) PROVIDE APPROPRIATE FIRE TREATED BLOCKING IN WALLS BEHIND ALL FIXTURES, PARTITIONS AND ACCESSORIES. BLOCKING FOR GRAB BARS TO BE PROVIDED IN WALLS OF BATHROOMS IN ALL UNITS
  - 4) PROVIDE MOISTURE RESISTANT GWB AT ALL WALLS AND CEILINGS IN BATHROOMS TYPICAL
  - 5) SET ALL CLOTHES WASHERS IN PANS WITH WATER SENSOR
  - 6) REFER TO ELECTRICAL AND MECHANICAL DRAWINGS FOR ADDITIONAL INFORMATION REGARDING LIGHTING, DIFFUSERS, ETC.
  - 7) PROVIDE FIRE EXTINGUISHER ON BRACKET IN BASE CABINET BELOW KITCHEN SINK - TYPICAL
  - 8) HANG HOT WATER HEATER FROM DECK ABOVE. (SEE DETAIL ON TYPICAL UNIT DETAILS SHEET)
  - 9) WHERE DROPPED SOFFITS AND CEILINGS ARE SHOWN, THESE ARE IN ADDITION TO THE FIRE RATED GWB CEILING ABOVE WHICH IS PART OF THE RATED ASSEMBLY
  - 10) WHERE PLUMBING VALVES (TUB, SHOWER, ETC) ARE LOCATED IN FIRE RATED WALLS, PROVIDE FIRE RATED BOX IN WALL FOR VALVE TO BE INSTALLED WITHIN

- CABINETRY AND APPLIANCE ABBREVIATIONS
- DB = DRAWER BASE
  - DRB = DOOR BASE
  - SB = SINK BASE
  - WC = WALL CABINET
  - WC(24) = WALL CABINET 24" DEEP
  - PU = PANTRY UNIT 24" DEEP
  - OS = OPEN SHELVES
  - RA = RANGE
  - DW = DISHWASHER
  - REF = REFRIGERATOR

REFLECTED CEILING PLAN AND LIGHTING LEGEND

SYMBOL	TAG	DESCRIPTION
●	A	SURFACE MOUNT - TBD
●	B	SURFACE MOUNTED - TBD
○	C	SURFACE MOUNT - IN CLOSETS
□	D	SURFACE MOUNTED ON WALL ABOVE DOOR
□	E	WALL SCONCE IN BATHROOM OVER VANITY
○	F	SURFACE MOUNT - WET LOCATION
○	H	SURFACE MOUNT CENTER IN BEDROOMS
○	J	SURFACE MOUNT - WET LOCATION
△	K	EXTERIOR CUT OFF DOWN LIGHT
■		CEILING GRILLE