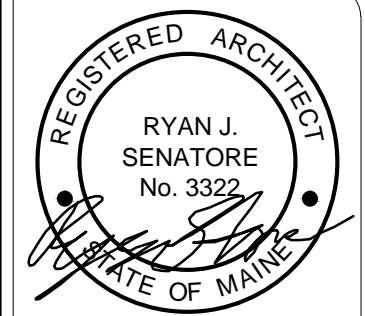
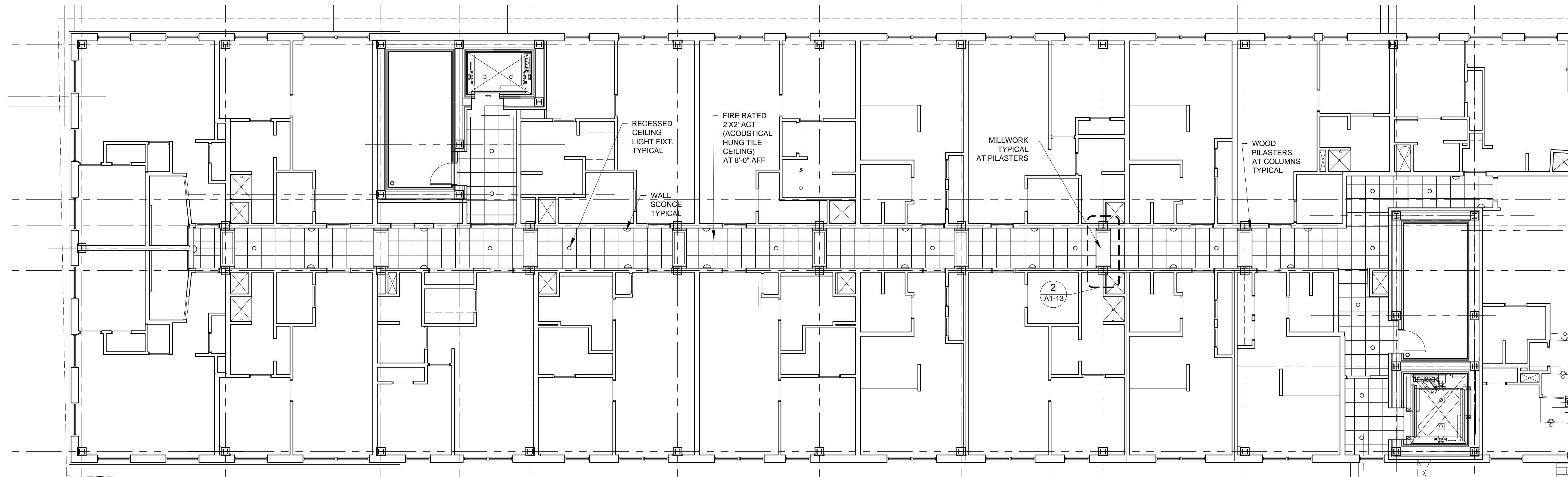


NOTE:
1.) PROVIDE CUT OFF DOWN LIGHT AT EACH 7TH FLOOR DECK EXTERIOR DOOR

- REFLECTED CEILING PLAN NOTES
- 1.) G.C. TO COORDINATE LOCATIONS OF PLUMBING CLEAN OUTS AND PROVIDE FIRE RATED ACCESS PANELS AT CEILING
 - 2.) G.C. TO PROVIDE ACCESS PANELS AS REQUIRED FOR ALL ELEMENTS (SPRINKLER, VALVES, ETC) NOT SHOWN ON THIS REFLECTED CEILING PLAN)
 - 3.) G.C. TO PROVIDE METAL FRAMING AND BLOCKING REQUIRED FOR ALL ACCESS PANELS AND CONTROL JOINTS
 - 4.) FOR APARTMENT UNIT CEILING INFORMATION SEE APARTMENT UNIT DETAIL SHEETS
 - 5.) ALL RECESSED LIGHTING FIXTURES TO HAVE RATED HOUSINGS TO MEET FIRE RATINGS OF CEILINGS THEY ARE INSTALLED WITHIN

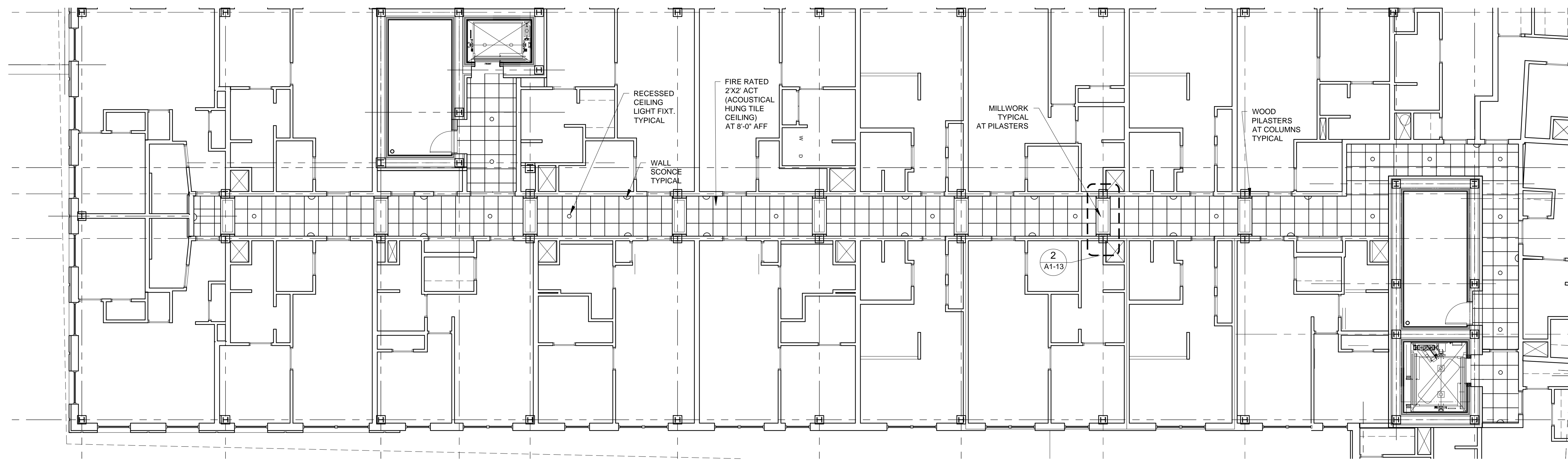


© 2015 RYAN SENATORE ARCHITECTURE



2 SEVENTH - EIGHTH FLOOR REFLECTED CEILING PLAN
1/8" = 1'-0"

LIGHTING SHOWN FOR REFERENCE ONLY SEE ELECTRICAL PLANS FOR LIGHTING LAYOUT



1 THIRD - SIXTH FLOOR REFLECTED CEILING PLAN
1/8" = 1'-0"

667 CONGRESS STREET
APARTMENTS
PORTLAND, MAINE



RYAN SENATORE
ARCHITECTURE
665 CONGRESS STREET
PORTLAND, MAINE 04101
207-650-6414
senatorearchitecture.com

CONSULTANTS:
STRUCTURAL: Structural Integrity
77 Oak Street
Portland, ME 04101
207-774-4614

REVISIONS:

DATE: 2 NOVEMBER 2016
PROJECT No. 1503
DRAWN BY: RJS / RRT
CHECKED BY: RJS
SCALE: AS NOTED

SHEET TITLE:
THIRD - EIGHTH
FLOOR
REFLECTED
CEILING PLAN

A1-14